



505

OFFICE OF THE AGRICULTURAL COMMISSIONER
COUNTY OF SANTA CRUZ, CALIFORNIA

DAVID W. MOELLER
AGRICULTURAL COMMISSIONER
SEALER OF WEIGHTS AND MEASURES
DIRECTOR, MOSQUITO AND VECTOR CONTROL

April 22, 1998

Agenda: April 28, 1998

Board of Supervisors
County of Santa Cruz
701 Ocean Street
Santa Cruz, CA 95060

Departmental Workshop Presentation

Dear Members of the Board:

On September 9, 1997, your Board approved a format and schedule for departmental workshops for the 1997/98 fiscal year. The Agricultural Commissioner's presentation will be made to you today. Our presentation format will be a multimedia, "virtual" tour of the Agricultural Commissioner's programs. Following the County Administrative Office's suggested workshop outline, we will provide your Board with our Mission Statement, Division Goals, organizational charts, span of managers' responsibilities and staffing levels for each of our divisions, information about what our staff does and how their work is accomplished, some performance indicators, and financial information. Written materials, in packet form, are included with this letter. These packets are dated November 25, 1997, the date we were originally scheduled to make our presentation to you; however, because of scheduling conflicts, our presentation was postponed until today. In the interests of conserving resources, and **because** the information within the packets is still valid, we chose not to reprint the packets solely to correct the date.

Staff will be present to answer questions you may have about the Agricultural Commissioner's Office.

It is therefore RECOMMENDED that your Board accept and file this report.

Sincerely,

David W. Moeller
AGRICULTURAL COMMISSIONER

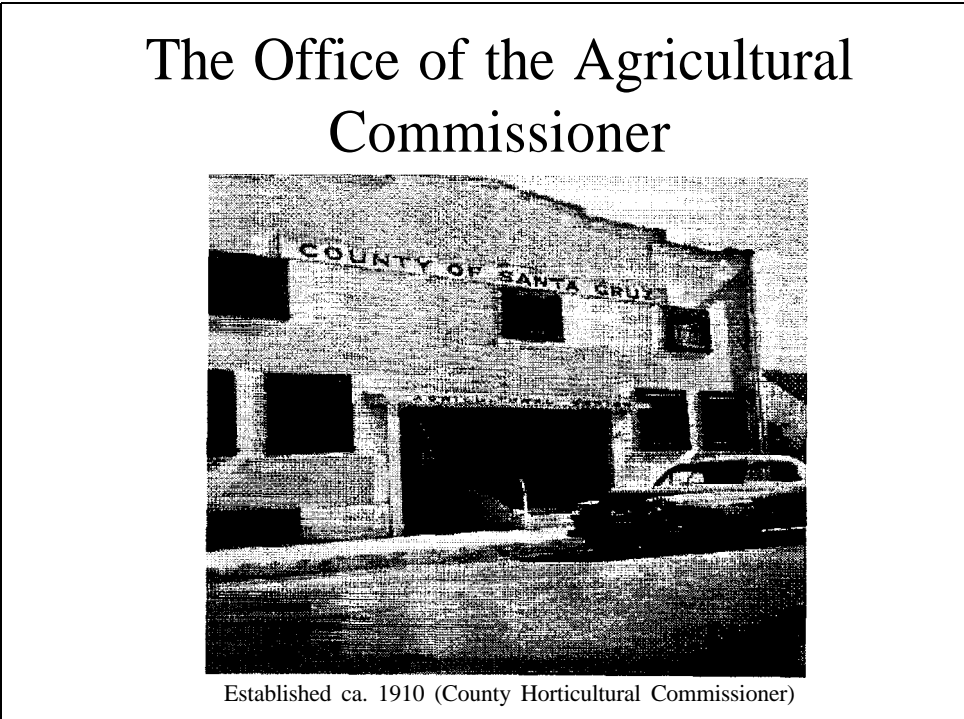
RECOMMENDED:

SUSAN A. MAURIELLO
COUNTY ADMINISTRATIVE OFFICER

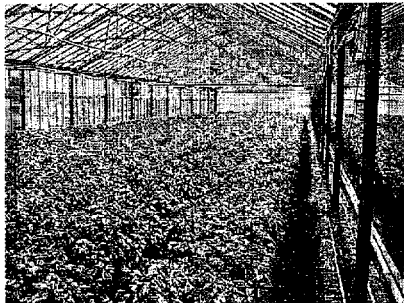
Attachments

The Office of the Agricultural
Commissioner

Departmental Workshop
Tuesday, November 25, 1997
1:30pm



The Office of the Agricultural Commissioner



Mission Statement

“With diligence, carry out our duty as public officers to provide for the just, impartial and reasonable enforcement of all laws and regulations of statewide agriculture and weights and measures programs and to promote and protect our agricultural industry, our environment and the marketplace for the benefit of the public we serve.”

Goals

■ **Agriculture Division**

“To promote and protect the agricultural industry of Santa Cruz County and public health, safety and welfare.”

■ **Weights and Measures Division**

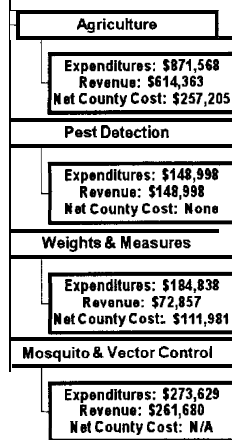
“To protect the marketplace by ensuring that in every transaction of weight, measure or count, equity prevails.”

■ **Mosquito and Vector Control District**

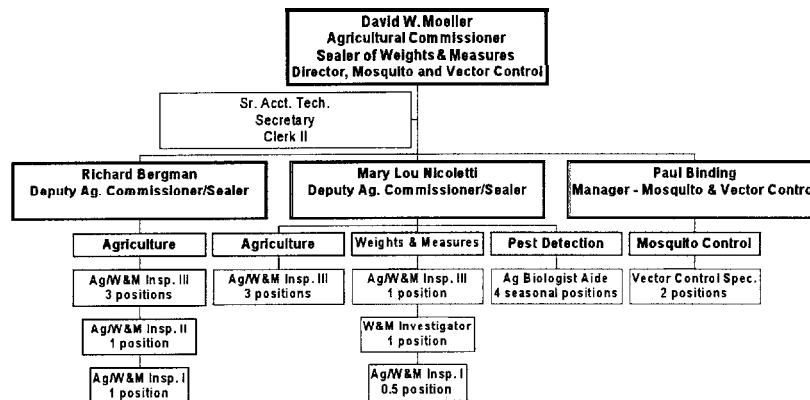
“To promote the public health and well-being by providing relief from mosquito and other vector-borne nuisances and diseases.”

Organization - by Budget Unit

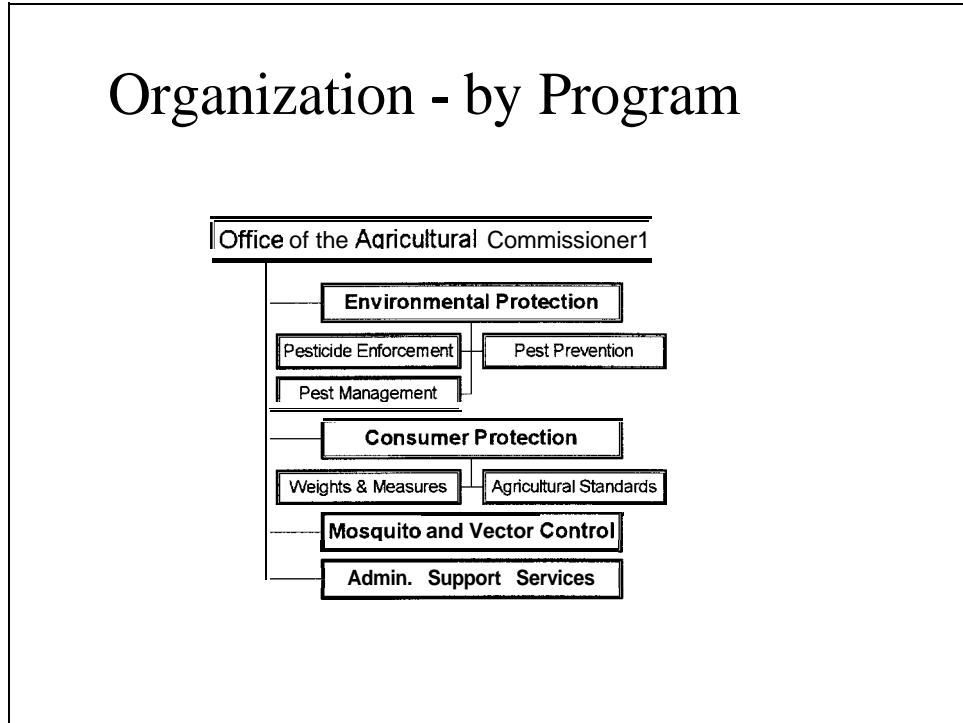
Office of the Agricultural Commissioner



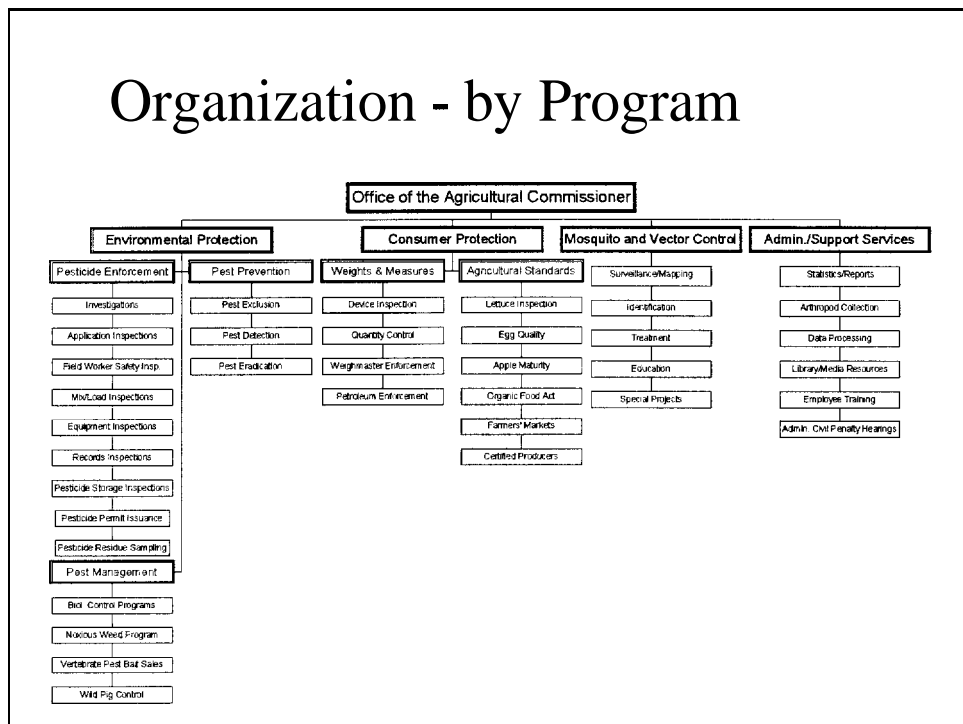
Organization - by Staff



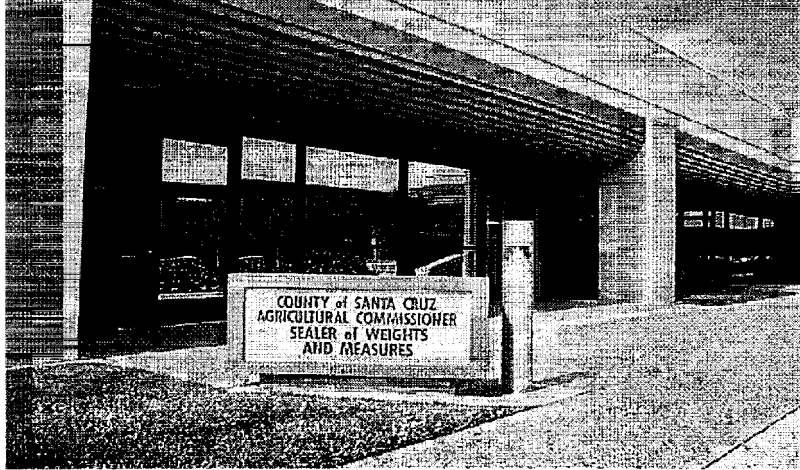
Organization - by Program



Organization - by Program



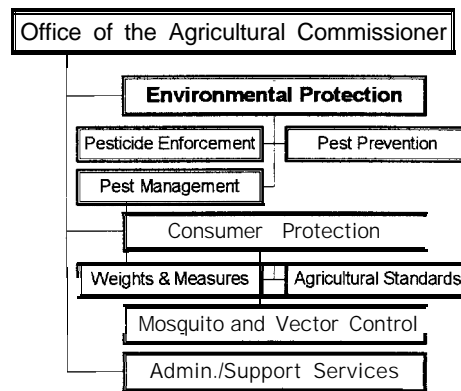
175 Westridge Drive, Watsonville
Headquarters - Agricultural Commissioner



640 Capitola Road, Santa Cruz
Field Office - Weights & Measures, Pest Detection, MVCD



Organization - by Program



Environmental Protection

- Pesticide Enforcement
- Pest Prevention
 - Pest Exclusion
 - Pest Detection
 - Pest Eradication
- Pest Management

Environmental Protection

- Pesticide Enforcement



Environmental Protection

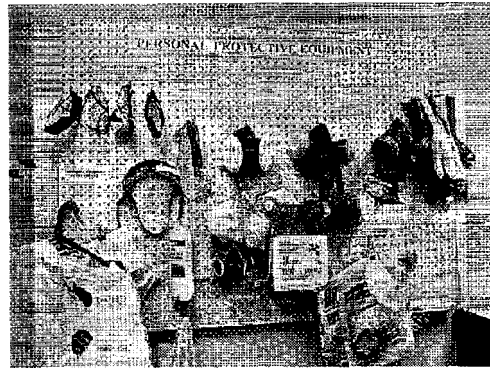
- Pesticide Enforcement
 - Restricted Materials Permit Issuance



Environmental Protection

■ Pesticide Enforcement

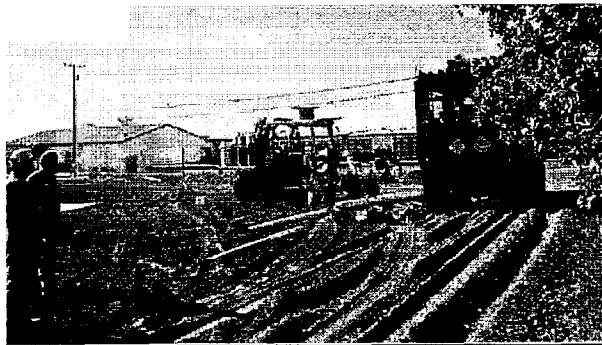
- Restricted Materials Permit Issuance
- Worker Safety



Environmental Protection

■ Pesticide Enforcement

- Restricted Materials Permit Issuance
- Worker Safety
- Application Monitoring



Environmental Protection

■ Pesticide Enforcement - Workload Indicators (96/97)

- Investigations	29
- Application Inspections	239
- Equipment Inspection	162
- Field Worker Safety Inspections	22
- Mix/Load Inspections	104
- Fumigation Monitoring Inspections	28
- HQ/Safety Records Inspections	24
- Pesticide Storage Site Inspections	62
- Pesticide Permits Issued	>500

Environmental Protection

■ Pesticide Enforcement

- Workload is monitored/measured by:
 - Weekly and Monthly Reports (required)
 - Negotiated **Workplan** and Contract Provisions
 - Periodic QA by State and County Program Managers

Environmental Protection

- Pest Prevention



Environmental Protection

- Pest Prevention
 - Pest Exclusion



Environmental Protection

■ Pest Prevention

- Pest Exclusion- Workload Indicators ('97 season)

■ Exclusion Inspection

- Site Visits (UPS, FedEx, USPS, shippers) 1,606
- Units Profiled 24,830
- Units Inspected 7,861

- Workload is monitored/measured by:

- Contract Provisions
- Weekly and Monthly Reports (required)
- Periodic QA by State and County Managers

Environmental Protection

■ Pest Prevention

- Pest Exclusion
- Pest Detection



Environmental Protection

■ Pest Prevention

- Pest Detection - Workload Indicators ('97 season)

- | | |
|-----------------------|--------|
| ■ Traps Deployed | 1,474 |
| ■ Trap Servicings | 16,791 |
| ■ Properties Surveyed | 3,587 |

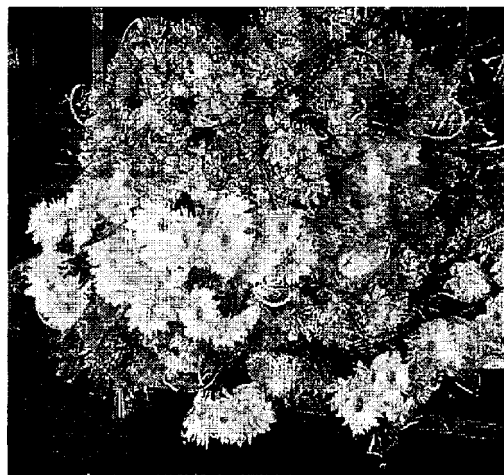
- Workload is monitored/measured by:

- Negotiated Workplan
- Contract Provisions
- Weekly and Monthly Reports (required)
- Periodic QA by State and County Managers

Environmental Protection

■ Pest Prevention

- Pest Exclusion
- Pest Detection
- Pest Eradication
 - Gypsy Moth Project
 - CWR Project



Environmental Protection

■ Pest Prevention

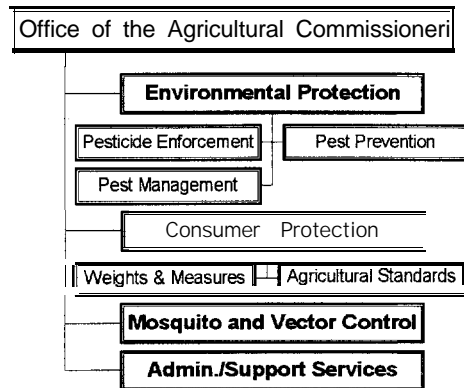
- Pest Eradication - Workload Indicators
 - Properties Surveyed
 - Traps Deployed and Number of Servicings
 - Pesticide Applications Made
 - Plants/Fruit Seized and Destroyed
 - Compliance/Hold Orders Issued
 - Number of Target Pests Trapped/Collected
- Workload is monitored/measured by:
 - Pest-specific Eradication Protocols
 - County, State and Federal Eradication Project Managers
 - Weekly and Monthly Reports (required)

Environmental Protection

■ Pest Management

- Biological Control Programs
- Noxious Weed Program
- Vertebrate Pest Bait Sales
- Wild Pig Control

Organization - by Program



Consumer Protection

- Agricultural Standards
 - Lettuce Inspection
 - Egg Quality
 - Farmers' Markets
 - Certified Producers
 - Organic Foods Act
 - Apple Maturity
- Weights and Measures
 - Device Inspection
 - Quantity Control
 - Weighmaster Enforcement
 - Petroleum Enforcement

Consumer Protection

- Agricultural Standards

Consumer Protection

- Agricultural Standards
 - Lettuce Inspection



Consumer Protection

- Agricultural Standards
 - Lettuce Inspection
 - Egg Quality Inspection

Consumer Protection

- Agricultural Standards
 - Lettuce Inspection
 - Egg Quality Inspection
 - Farmers' Markets
 - Certified Producers



Consumer Protection

- Agricultural Standards
 - Lettuce Inspection
 - Egg Quality Inspection
 - Farmers' Markets
 - Certified Producers
 - Organic Foods Act



Consumer Protection

- Agricultural Standards
 - Lettuce Inspection
 - Egg Quality Inspection
 - Farmers' Markets
 - Certified Producers
 - Organic Foods Act
 - Apple Maturity Testing



Consumer Protection

■ Agricultural Standards - Workload Indicators (96/97)

- Lettuce Inspection
 - Cartons/carton equivalents inspected: 3,813,641
- Egg Quality
 - Dozens inspected: 1,230
- Organic Foods Act
 - Growers, producers, distributors registered: 80
- Direct Marketing (Farmers' Markets, Certified Producers)
 - Vendors inspected: 366
 - Complaints investigated: 26
 - Producers certified; growing grounds inspected: 100

Consumer Protection

■ Agricultural Standards

- Workload is monitored/measured by:
- Lettuce Inspection
 - Weekly reports, pack-out reports, State reports (required)
- Egg Quality
 - State and Federal contract requirements
 - Periodic QA by State/Fed agricultural standards inspectors
 - Monthly State reports (required)
- Direct Marketing (Farmers' Markets, Certified Producers)
 - Statutory requirements
- Organic Foods Act
 - Contract requirements
 - Weekly and monthly reports (required)

Consumer Protection

- Weights and Measures

Consumer Protection

- Weights and Measures
 - Device Inspection



Consumer Protection

■ Weights and Measures - Workload Indicators (96/97)

- Devices

■ Sites visited:	979
■ Inspections:	3,138
■ Complaint Investigations:	58
■ Notices of Violation Issued:	28
■ Fines/Judgements:	\$ 324

Consumer Protection

■ Weights and Measures

- Device Inspection
- Quantity Control



Consumer Protection

- Weights and Measures - Workload Indicators (96/97)

- Quantity Control

■ Sites visited:	686
■ Inspections (# of pkgs.)	30,963
■ Complaint Investigations:	116
■ Notices of Violation Issued:	84
■ Fines/Judgements:	\$3,921

Consumer Protection

- Weights and Measures

- Device Inspection
- Quantity Control
- Weighmaster Enforcement

Consumer Protection

■ Weights and Measures - Workload Indicators (96/97)

- Weightmaster Enforcement

■ Sites visited:	35
■ Inspections:	17
■ Complaint Investigations:	2
■ Notices of Violaton Issued:	5
■ Fines/Judgements:	0

Consumer Protection

■ Weights and Measures

- Device Inspection
- Quantity Control
- Weighmaster Enforcement
- Petroleum Enforcement

Consumer Protection

■ Weights and Measures - Workload Indicators (96/97)

Petroleum Enforcement

■ Sites visited:	101
■ Inspections:	93
■ Complaint Investigations:	17
■ Notices of Violation Issued:	5
■ Fines/Judgements:	0

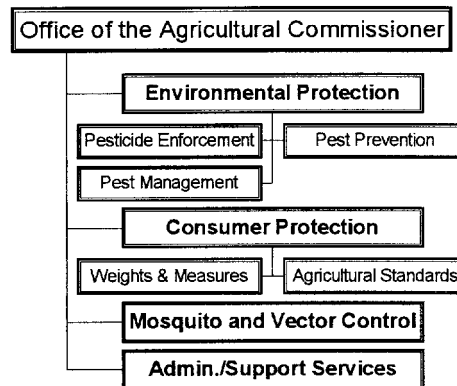
Consumer Protection

■ Weights & Measures

- Workload is monitored/measured by:

- Weekly and Monthly Reports (required)
- Annual Financial Statement (to State)
- Contract Provisions
- Periodic QA by County and State Program Managers

Organization - by Program



Mosquito and Vector Control

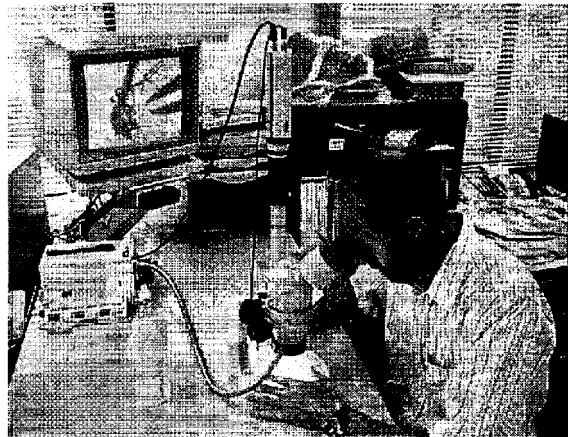
Mosquito and Vector Control

- Surveillance/Mapping



Mosquito and Vector Control

- Surveillance/Mapping
- Identification



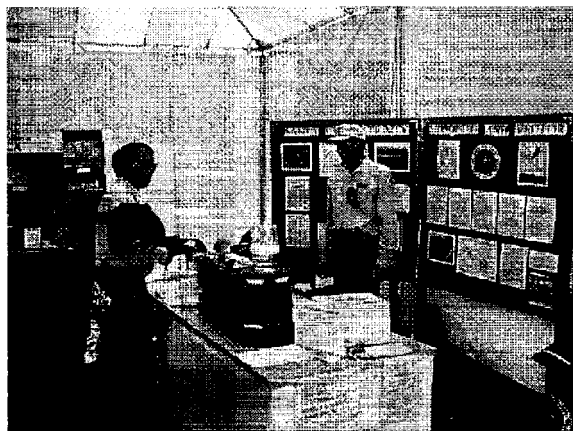
Mosquito and Vector Control

- Surveillance/Mapping
- Identification
- Treatment
 - by ground
 - by water
 - by air



Mosquito and Vector Control

- Surveillance/Mapping
- Identification
- Treatment
- Education



Mosquito and Vector Control

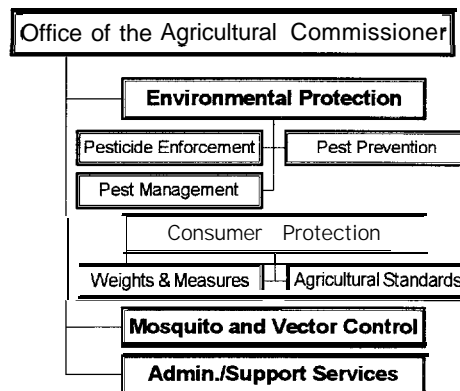
- Surveillance/Mapping
- Identification
- Treatment
- Education
- Special Projects



Mosquito and Vector Control

- Workload Indicators (96/97)
 - Mosquito inspections 2,580
 - Mosquito control treatments (incl. aerial) 446
 - Mosquito fish distributed (est.) 1,500
 - Mosquito control service requests (phone) 200
 - Residential inspections 100
 - Mosquito trap servicings 562
 - Larval and adult samples identified 174
- Workload is monitored/measured by:
 - Percent control of breeding sites
 - Response time to service requests
 - Weekly work reports
 - Shared information w/ other mosquito control districts

Organization - by Program



Administrative Services

- Statistics/Reports
 - Annual Crop Report, Ranch Map Book
- Data Processing
 - Pesticide permits, device registration program, mapping
- Employee Training
 - Licensing, worker safety, pest prevention strategies, investigative techniques, laws and regulations, hearing officer training
- Administrative Civil Penalty Hearings
- Arthropod Collection
- Library/Media Resources

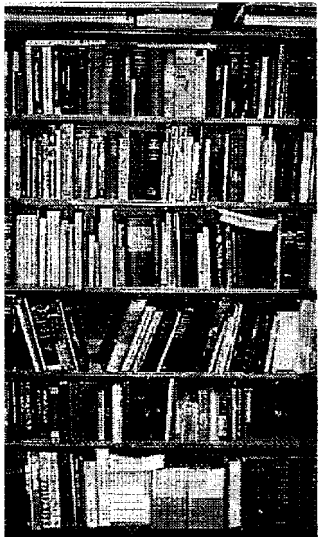
Laboratory/Library Resources

- Collections
 - Entomology



Laboratory/Library Resources

- Collections
 - Entomology
- Library Media Resources
 - Reference Library
 - Video Tapes
 - Annual Reports

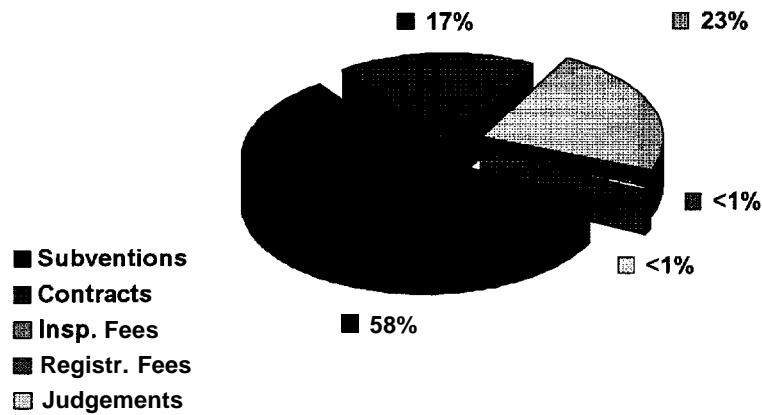


Revenue and Funding Sources

- Agricultural Commissioner
- Pest Detection
- Weights and Measures
- Mosquito and Vector Control

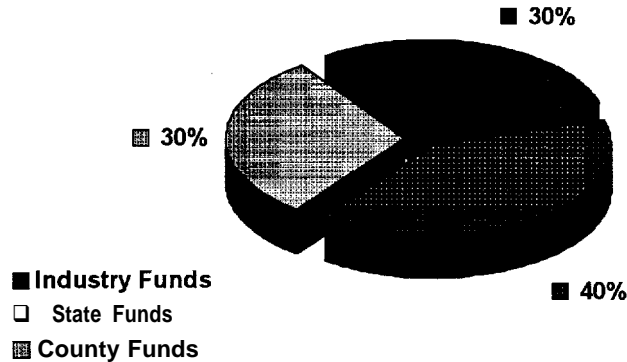
Revenue

Agricultural Commissioner



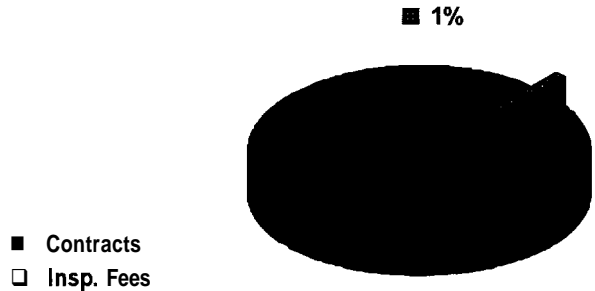
Funding Sources

Agricultural Commissioner



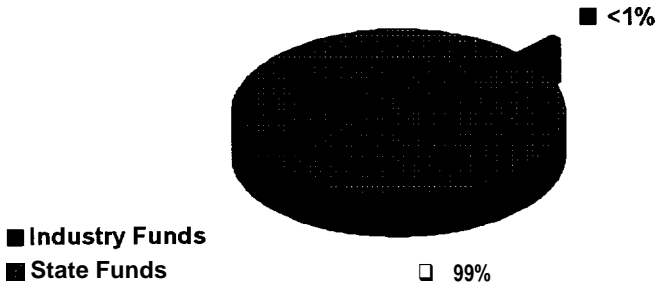
Revenue

Pest Detection



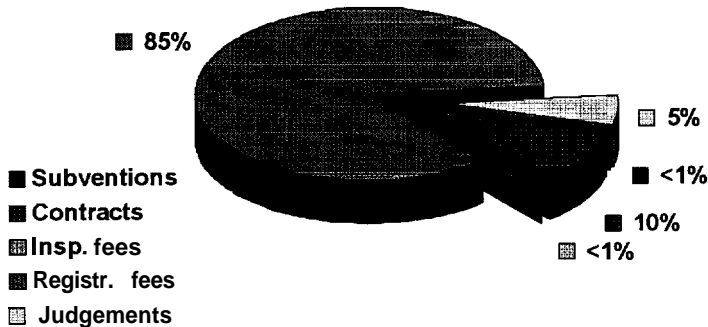
Funding Sources

Pest Detection



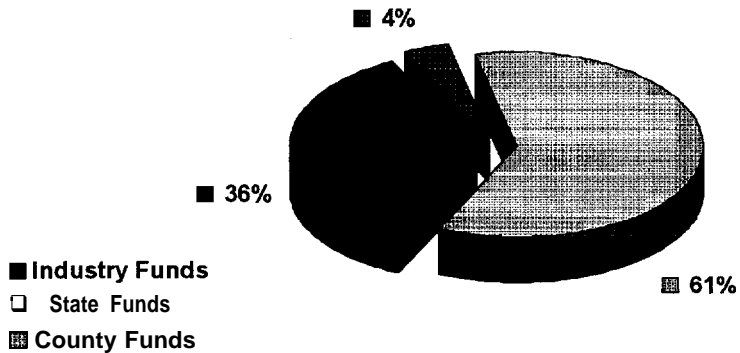
Revenue

Weights and Measures



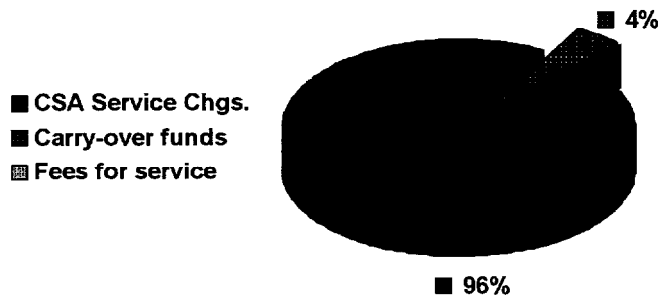
Funding Sources

Weights and Measures



Funding Sources

Mosquito and Vector Control



“I want to say that this county agricultural commissioner system is unique to California. They don't have it anyplace else. I think, perhaps the agricultural commissioners (offices) are one of the most important. . . in the whole state, in their protective function. (They're) very important to the agriculture in this community.”

Charles Dick (1907 - 1993)

Former Santa Cruz County Agricultural Commissioner and
Chief Deputy Director of the CA Dept. of Food and
Agriculture