



JOHN A. FANTHAM
DIRECTOR OF PUBLIC WORKS

County of Santa Cruz

309

DEPARTMENT OF PUBLIC WORKS

701 OCEAN STREET, ROOM 410, SANTA CRUZ, CA 95060-4070
(831) 454-2160 FAX (831) 454-2385 TDD (831) 454-2123

AGENDA: February 9, 1999

January 28, 1999

SANTA CRUZ COUNTY BOARD OF SUPERVISORS

701 Ocean Street
Santa Cruz, California 95060

SUBJECT: RESOLUTION IN SUPPORT OF GRANT APPLICATION

Members of the Board:

The California Integrated Waste Management Board (CIWMB) has an ongoing grant program that provides funds for local governments to assist them with qualified costs associated with Household Hazardous Waste (HHW) programs. The CIWMB evaluates applications on a set of established priorities. In the past several years the County's HHW program was not considered a funding priority for this grant program due to the fact that our program was an existing facility and the emphasis for grant funding was establishment of new programs. We did not have any special programs that we considered eligible, and therefore did not apply for these funds.

As most jurisdictions now have HHW facilities in place, this year's new funding priorities include existing HHW programs that have not received grant funds in the past. The Department of Public Works is taking advantage of this new funding priority and is submitting a grant application to improve the HHW facility at the Ben Lomond Transfer Station. The application is to fund the expansion of the HHW processing area, and to create a Household Hazardous Waste Exchange Program at this site.

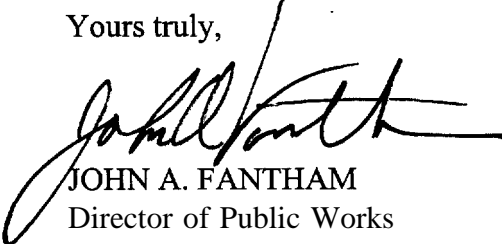
Due to the increasing **usership** of the Ben Lomond HHW facility, operating space has become limited. This expansion will increase the working and waste storage area by 420 square feet. This will provide for a more spacious and safer working area for County staff and the Household Hazardous Waste Exchange Program will provide a building where usable materials separated from the incoming HHW program can be stored. The Waste Exchange Program will allow the public to take reusable materials at no cost and at the same time reduce disposal expenses for the HHW program.

Attached is a copy of the grant application to the CIWMB requesting the amount of \$55,158 for expansion of the Ben Lomond Transfer Station HHW facility. We are also required to submit a resolution from the Board of Supervisors authorizing the submittal of this grant application, a copy of which is attached for your adoption.

It is therefore recommended that the Board of Supervisors take the following action:

1. Adopt the attached Resolution for Household Hazardous Waste Grant.
2. Authorize the Director of Public Works to sign all Grant related applications, contracts, payment requests, and agreements.

Yours truly,

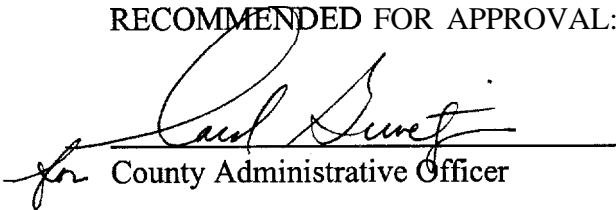


JOHN A. FANTHAM
Director of Public Works

BPK:rw

Attachments

RECOMMENDED FOR APPROVAL:



for County Administrative Officer

copy to: Public Works

BEFORE THE BOARD OF SUPERVISORS
OF THE COUNTY OF SANTA CRUZ, STATE OF CALIFORNIA

311

RESOLUTION NO. _____

On the motion of Supervisor
duly seconded by Supervisor
the following resolution is adopted:

RESOLUTION FOR HOUSEHOLD HAZARDOUS WASTE GRANT

WHEREAS, the people of the State of California have enacted Assembly Bill 1220 (Eastin, 1993) that provides grants to local governments to establish and implement waste diversion and separation programs to prevent disposal of hazardous waste, including Household Hazardous Waste (HHW), in solid waste landfills; and

WHEREAS, the California Integrated Waste Management Board has been delegated the responsibility for the administration of the program within the state by setting up necessary procedures governing application by cities and counties under the program; and

WHEREAS, the applicant will enter into an agreement with the State of California for development of the project, "Ben Lomond Transfer Station, Household Hazardous Waste Collection Facility Expansion";

NOW, THEREFORE, BE IT RESOLVED AND ORDERED that the Santa Cruz County Board of Supervisors authorizes the submittal of an application to the California Integrated Waste Management Board for a HHW Grant - Seventh Cycle. John A. Fantham, Director of Public Works, or his designee is hereby authorized and empowered to execute in the name of the County of Santa Cruz, all necessary applications, contracts, payment requests, agreements and amendments hereto for the purposes of securing grant funds and to implement and carry out the purposes specified in the grant application.

PASSED AND ADOPTED by the Board of Supervisors of the County of Santa Cruz, State of California, this o day f 1999, by the following vote:

AYES: SUPERVISORS
NOES: SUPERVISORS
ABSENT: SUPERVISORS

Chairperson of said Board

ATTEST: _____
Clerk of said Board

Approved as to form:


Chief Assistant County Counsel

Distribution: County Counsel
Public Works

SGAR
37

APPLICATION COVER SHEET

Applicant : SANTA CRUZ COUNTY
Department or Agency : PUBLIC WORKS
Street Address: 701 OCEAN STREET ROOM 410
Mailing Address: SAME
City and Zip Code: SANTA CRUZ, CA. 95060
County: SANTA CRUZ
Regional Participants: NOT APPLICABLE

Primary Contact: BRIAN KENNEDY – ENVIRONMENTAL PROGRAMS
COORDINATOR.

Phone: 83 1-763-3 113 Fax: 83 1-763-3 118

Email Address: dpw162@co.santa-cruz.ca.us

Finance Officer: CAROL KELLY – CHIEF OF ADMINISTRATIVE SERVICES

Phone: 83 1-454-2 160 Fax: 83 1-454-2385

Email Address: dpw188@co.santa-cruz.ca.us

Program Director: JOHN A. FANTHAM – DIRECTOR OF PUBLIC WORKS

Phone: 83 1-454-2 160 Fax: 83 1-454-23 85

Email Address: NONE

Assembly Districts: 27, 28

Senate District: 15

Brief Description of Project:

EXPANSION OF THE PERMANENT HOUSEHOLD HAZARDOUS WASTE
FACILITY LOCATED AT THE BEN LOMOND TRANSFER FACILITY.
EXPANSION INCLUDES ENLARGING WASTE PROCESSING AREA, CREATION
OF A WASTE EXCHANGE AREA, PURCHASE OF WASTE PROCESSING
EQUIPMENT, AND CREATION OF ADDITIONAL PARKING AREA.

Certification:

I declare, under penalty of perjury, that all information submitted for the Board's
consideration for allocation of grant funds is true and accurate to the best of my
knowledge and belief.

Signature:

Date: 1-20-99 Phone: 83 1-454-2 160

JOHN A FANTHAM – Director of Public Works

TABLE OF CONTENTS

	<u>Page</u>
• Resolution	1
• Narrative Section 1 - Need	2
• Narrative Section 2 – Objective	4
• Narrative Section 3 - Methodology	5
• Narrative Section 4 – Evaluation	6
• Narrative Section 5 – Budget	7
• Narrative Section 6 – Completeness	8
• Narrative Section 10 – No Previous Grants	8
• Attachment 1 – Project Diagram	9
• Attachment 2 - Exhibit D – Work Statement	11
• Attachment 3 – Budget Documents	12

RESOLUTION

AS ALLOWED I-N THE APPLICATION
INSTRUCTIONS, A RESOLUTION APPROVED
BY THE SANTA CRUZ COUNTY BOARD OF
SUPERVISORS WILL BE SENT UNDER
SEPARATE COVER BY MARCH 19, 1999.

Section 1 -Need

The County of Santa Cruz Household Hazardous Waste Collection Program consists of two permanent collection facilities; one located at the Ben Lomond Transfer Station in the northern part of the County, and the other at the Buena Vista Landfill in Watsonville, serving the southern section of the County. These facilities serve a population of approximately 243,000. The permanent collection facility at the Buena Vista Landfill began operation in May 1991, and the facility at the Ben Lomond Transfer Station opened in September 1991. The facilities are staffed on an alternating basis, with the Buena Vista facility staffed 5 days a week, and the Ben Lomond facility typically open 2 days. The Household Hazardous Waste (HHW) Program is staffed and operated by the Solid Waste Division of the Department of Public Works.

The program diverts household hazardous waste from improper disposal at the County solid waste facilities by providing the public with a safe and environmentally sound disposal alternative. The public can drop off their household hazardous waste on operational days at either facility, although automotive and household batteries, motor oil, oil filters and antifreeze can be disposed at both locations at the recycling center, 7 days a week. This service is available for household hazardous wastes only, as no commercial or industrial hazardous wastes are accepted. These programs are full service, as all types of HHW are collected at these facilities, with only radioactives, explosives, medical wastes and compressed gasses excluded. In fiscal year 1997/98, there were over 3400 participants to the program and these participation figures do not include customers who only dropped off items such as motor oil, batteries, and antifreeze at the recycle centers.

The number of participants in the program was relatively steady until a recent change in the way we schedule the public. For years we required an appointment to drop waste off at either of the facilities. Members of the public would call HHW staff members, and they would coordinate a specific date, time, and location for the customer to drop off their wastes. This system was inconvenient and led to recent changes in which the public call a hot line that details wastes acceptance policies and gives the customers the monthly schedule of the program. We also publish the program monthly schedule in the local papers. This way the public can choose when they want to use the facilities without a specific appointment. This change has resulted in a dramatic increase in facility participation, and happier customers. Fortunately, concerns over large loads, prohibited, or commercial wastes being brought to the facility have not been realized.

It has been clear from the beginning of the program that the size of the facilities was inadequate to accommodate the amount of wastes being handled. Waste acceptance numbers are increasing, and we have not seen a slow down in waste quantities like we anticipated. Both facilities feature portable chemical storage buildings on sealed surfaces surrounded by fenced in processing areas. The small size of the facilities has resulted in cramped working areas and unnecessary frequency of waste shipments due to drum storage constraints. To rectify this lack of space, the Buena Vista HHW Facility has been expanded several times. This facility is located at an active landfill, and is the main

HHW collection facility and houses the office for the staff, and a large waste exchange, store. There was ample room to expand this facility, and the work has been achieved by utilizing County labor and equipment along with modest material costs. While the improvements have been modest in appearance, they fit in with the rest of the temporary style structures used at the landfill entrance facilities.

The Ben Lomond Permanent HHW Facility was built as part of the Ben Lomond Transfer Station construction. This site was built as a satellite to the Buena Vista facility, and while we process latex paint at this facility, there is no effective waste exchange program at this facility. We are forced to transport processed latex paint and very limited amounts of reusable materials back to the Buena Vista facility, denying local residents use of this resource. This site was constructed to match with the other buildings, and to expand this site in a way that maintains the existing aesthetic objectives will require a professional construction contract. The site improvements at this facility will allow us to have more operational room as well as install a waste exchange program at this site which will better serve the public as well as reduce waste disposal costs. Improvements in waste handling devices will help prevent worker injury and improve productivity.

Specifically, grant monies would provide the following:

Expansion of the HHW work area

This task would move the bermed concrete area five feet in three directions, increasing the work area by 400 square feet to a total of 1080 square feet. This would allow more room for sorting waste, bulking oil based paints, processing latex paint (all latex paint is processed on site for re-use by the public), and drum storage. Included would be the installation of a new 8-foot tall security fence with barbed wire, which would help eliminate some of the vandalism problems we have had at this site in the past. The increased area would still be covered under the existing roof structure, and would be coated with a chemical resistant epoxy.

Creation of a Waste Exchange program

This task includes the purchase of a prefabricated chemical storage building, the pouring of a concrete base for the storage building and walkway, and the creation of a parking area for customers. We have never had an effective waste exchange program at this location largely due to the lack of proper facilities and parking. This will allow us to benefit the community as well as potentially save tens of thousands of dollars on disposal costs. Last year we processed 3400 gallons of latex paint at this site, which could then be given back to the local community along with other reusable items.

Purchase a paint can crusher for bulking of oil based paints

This task would allow us to process oil based paints in a more efficient and ergonomic fashion. We use a "Paint Box" at our Buena Vista location in which closed paint cans are placed in a roll off bin by HHW staff, and processed by our contractor off site. This eliminates the need to manually remove the contents of the containers, saving time, drum storage space, and increasing worker safety. As there is no room for a roll off bin at the

Ben Lomond site, the can crusher will allow us to continue to bulk at this site, but more efficiently and with less opportunity for staff injury.

317

Purchase two pneumatic can openers

This task is used with the can crusher to open cans for use with the crusher and for use with the latex paint processing program. As any staff member working at a HHW facility can attest to, opening thousands of paint cans every year makes the hands and wrists sore. This process is time consuming and can lead to chronic injury over the years. The second can opener is for use with the latex paint processing program at the Buena Vista facility.

The County HHW program is funded by a tipping fee surcharge, as well as annual fees paid by the Cities of Santa Cruz, Watsonville, and Capitola. These Cities buy into the County program on an annual basis, based upon the population of each city. This grant application is not considered multi-jurisdictional as any of the Cities can terminate their participation in the County program and operate their own program if they desire. The annual cost for the entire program is between \$250,000 and \$300,000 per year, and the cost of the improvements described in this application would effect the program costs significantly. The County programs have not received any grant funds in the last three cycles and in fact we have never received discretionary grant monies from the Waste Board. We did apply for and receive our share of the non-discretionary grant monies in the 1990/91, 1991/92, and 1992/93 fiscal years. Sketches of the proposed project can be found as Attachment 1.

SECTION 2 – OBJECTIVES

The objective of this project is to make the improvements to the Ben Lomond Permanent HHW Facility which will allow us to continue to provide quality public HHW service and improve HHW staff working conditions. It was evident almost from inception that the space designed for this HHW facility was inadequate, but we felt that over time interest in use of the facility would wane, and there would be no need for improving the facility. This facility is a satellite site, and is typically open to the public two days a week. We erroneously predicted that after an initial flood of waste brought to the facility, the amounts would begin to decline after the initial demand was satisfied. As demonstrated by the number of site customers listed by fiscal year below, this did not occur:

<u>Fiscal/Year</u>	<u># Customers</u>
1991/92	300
1992/93	559
1993/94	756
1994/95	654
1995/96	655
1996/97	743
1997/98	1028

(Note that the number of customers only reflect HHW waste only, and does not account for waste oil, oil filters, batteries, and antifreeze which are collected at a separate area at the transfer facility.)

The large increase of customers in the last fiscal year is a direct result of the previously mentioned changes in the appointment system, which allows participants to choose the date and time they visit the facility from a published monthly schedule. It is clear from this data that there remains strong public interest in using this facility for the convenient disposal of HHW.

The increase in participation coupled with the current limited workspace make it necessary for us to expand this facility. It is not uncommon for the waste sorting area to be filled with carts loaded with waste leaving very little room for County staff to perform their sorting and bulking duties. The increase in facility size will allow us to move the chemical storage building further away from the site entrance which will give us more processing room. The paint can opener and crusher will make more efficient use of staff time and limit exposures and injuries. The existing latex paint storage and processing area is woefully inadequate, only allowing us to process two colors of paint where we have the room for 8 colors at the Buena Vista site. This part of the program will greatly benefit from more workspace.

The waste exchange program improvements are particularly exciting. Currently, we transport much of the usable materials from the Ben Lomond HHW facility to the Buena Vista HHW facility in Watsonville nearly 40 miles away. The Buena Vista facility has a “store” where the public can “shop” for reusable materials. We intend to purchase a small chemical storage building to be used as a stand alone waste exchange “store” where member of the public can obtain reusable materials from this site as well. Last year we blended 3,400 gallons of latex paint, and most of that was given to people visiting the Watsonville site, at the other end of the County. When completed, the waste exchange program in Ben Lomond will give back thousands of dollars worth of usable materials, while making substantial savings on disposal costs. When this program is available at the Ben Lomond site, it will benefit the people who live in the local communities of Felton, Ben Lomond, Boulder Creek, and northern Santa Cruz.

It is our intention to meet the above mentioned objectives by the end of the 1999/00 fiscal year, and possibly complete the project by the end of the 1999 calendar year. This time frame is very realistic, as the work is not very complicated and the equipment is readily available.

SECTION 3 – METHODOLOGY

All of the following tasks will be employed to meet the previously mentioned objectives:

Design and engineering of improvements and development of bid packet

Preliminary design is included in this bid packet, but final design and all engineering for the project will be completed by County Public Works Engineers. Given that much of the survey information is available on as-built plans for the transfer station, the engineering for this project is minimal, and should be completed within a month of approval. The plans, specifications, and bid documents will be compiled the department

of Public Works, under the direction of Brian Kennedy, the primary contact and manager for this project. The department of Public Works has ample experience with this type of bid process. Assuming approval of the grant application in May 1, 1999, it is expected that design and engineering of this project will be ready for bid by July 15, 1999.

Bid period and contractor selection

The project would likely be open to the bid process for three weeks, and vendor selection and contract approval usually takes about three weeks longer. The process of contractor selection should be finished by the end of August 1999 when construction would begin.

Project construction and contract management

A project of this size would be given 20 working days for completion, which would have the majority of the work performed by the end of September 1999, assuming no delays. This time of year should produce no weather-related delays, and the project is not using any special materials that should cause any material delays. The permits for the project will be the responsibility of the contractor and should be minimal and should be expedited by County Planning Department.

Procurement of capital items – Chemical storage building, can crusher, and can openers.

These items would be ordered by the County upon grant approval, and would not be part of the construction project. The chemical storage building and can crusher will take up to 8 weeks for construction, and the can openers should be available immediately. Given this time line, the capital items would be available for installation immediately after construction is finished.

There would be no future funding requirements for this proposal, as they are one-time expenditures. If this proposal is not funded, it is likely that much of the work described in this proposal would be accomplished, but over a number of years as funds are available.

Exhibit D, “Work Statement”; can be found as attachment 2.

SECTION 4 – EVALUATION

The success of this proposal is easy to evaluate, as it will be clear if the improvements are made and the equipment is purchased. The effect of the increased work area and updated equipment have on daily operations will be a qualitative determination made by the three staff members who work at the facility, but it is clear that the expansion will have a positive effect on the workplace. The space and equipment will reduce the opportunities for accidents and repetitive stress injuries as well. We should see longer periods between shipments due to the increased storage area and waste exchange program as well.

The waste exchange program can be evaluated by tracking the amount of waste that is removed from the “store”. This can be directly correlated to dollars saved on disposal as well as the amount of interest by the public for this program. We do plan on advertising

this program through the local papers, and we anticipate a high usage. The new waste exchange building at the Buena Vista site (the “Second Chance Store”) has been extremely popular and at times it is difficult to maintain stock.

SECTION 5 – BUDGET

Permanent Collection Facilities

Concrete Work – 1044 sf	\$10,440.00
Asphalt Work - 1230 sf	\$ 6,150.00
Miscellaneous Clearing and moving of utilities	\$ 2,500.00
Design and engineering	\$ 961.00
Fencing	\$ 5,500.00
Chemical Storage Building	\$11,878.00
Tee Mark Super 6 Can Crusher	\$ 7,380.00
Two pneumatic can openers	<u>\$ 10,349.00</u>
<u>TOTAL</u>	\$55,158.00

Budget determinations were made with the following considerations:

- All project management work and administration of this project will be done by existing County HHW staff, and is therefore not considered an additional itemized budgetary expense.
- The quote for the chemical storage building is for a Safety Storage product. Our existing storage buildings are from this local manufacturer, and the new unit will match in style and color. The price includes tax and shipping.
- The T-mark can crusher came recommended by two sources who have very good experiences with this unit. While there are less expensive models on the market, it appears that this unit is well built and designed to crush paint cans. The price is from EPAI in Seattle and includes shipping costs.
- The Edlund can opener is pricey as well, but it too came with a glowing recommendation, and there are not many products like this on the market. The price is from EPAI in Seattle, and includes shipping.
- Quotes for the other items and brochures for the equipment can be found in attachment 2. The quotes from Granite Construction and Steel Fence Systems have contingencies built in, as they were solicited for budgetary purposes. Actual bid prices are expected to be lower. Any unanticipated cost overruns will be covered by funds available in the Solid Waste Division fund balance. The Solid Waste Division is an Enterprise Fund, and has contingency monies available should the need arise.

SECTION 6 - COMPLETENESS, LETTERS OF SUPPORT, EXPERIENCE

321

Completeness

This is the first discretionary grant application for the Santa Cruz County HHW programs, and therefore we have no basis for the amount of information required to satisfy the reviewing panel. It is our intent to provide all of the pertinent information needed to make a determination, and if this application is lacking in any way, we will be glad to provide any additional information to the best of our ability. It is our intent to give the review panel all of the information needed, without burdening the panel with unnecessary information.

Experience

A project of this type is well within the abilities of County Staff. The Solid Waste Division has developed bid packets and done project management for many projects of a variety of sizes. Some the projects we have completed in the past two years include:

<u>Project</u>	<u>Cost</u>
Landfill Gas Flare System	\$375,000.00
Buena Vista Truck Scale	\$ 77,000.00
Ben Lomond Drainage Improvements	\$223,000.00
Buena Vista Landfill LFG Drilling	\$ 10,125.00

In addition, the Solid Waste Division selects contract engineering and laboratory firms in-house by soliciting bids for services, and directing selection panels. We are confident that we have identified the need for this grant, and that we can easily implement the tasks utilizing our experience and resources.

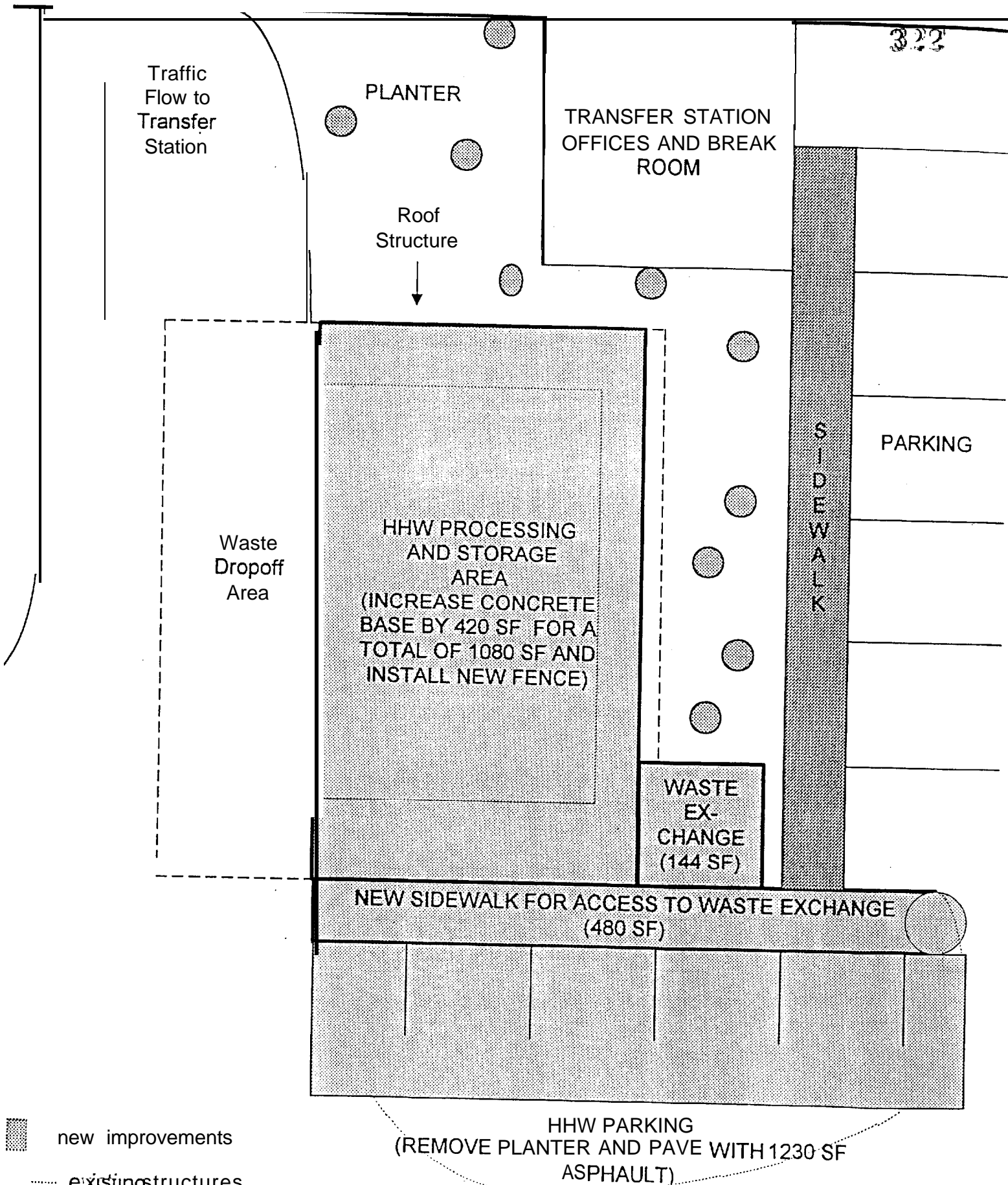
Letters of Support

A resolution authorizing this grant application will be forwarded under a separate cover. This resolution demonstrates the support of the County Board of Supervisors for this project.

SECTION 10 -NO HHW GRANT FUNDING DURING LAST THREE CYCLES

The County of Santa Cruz has not received HHW grant funding in the last three cycles.

SANTA CRUZ COUNTY - BEN LOMOND HHW FACILITY - PROPOSED

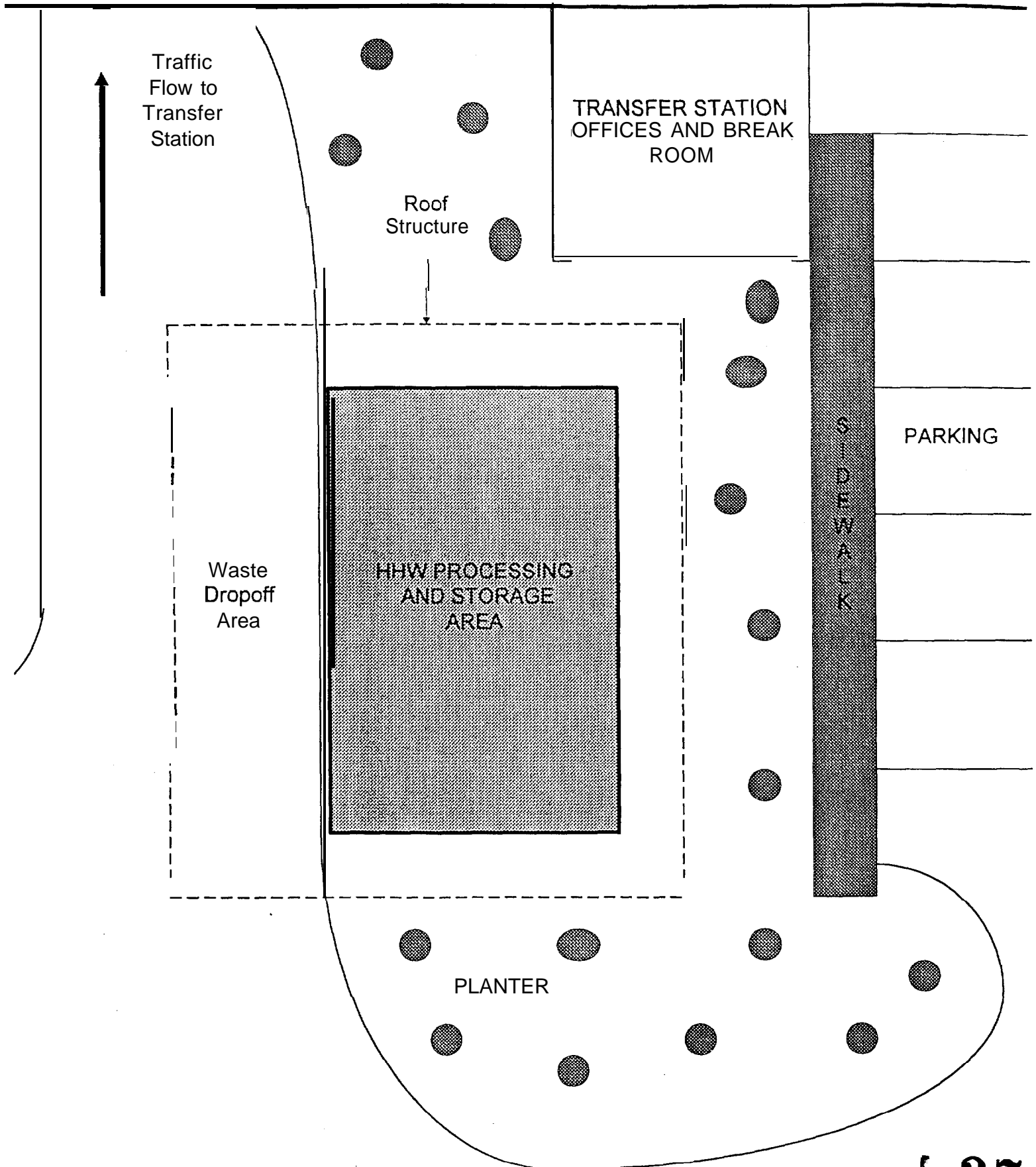


■ new improvements
--- existing structures

37

SANTA CRUZ COUNTY - BEN LOMOND
HHW FACILITY - EXISTING

323



37

Exhibit D

WORK STATEMENT

327

Applicant SANTA CRUZ COUNTY

Date: 1/20/99

Reporting and Expenditure Category PERMANENT COLLECTION FACILITIES

Activity Number	Description of Activity	Staff or Contractor	Time Period
1.	DESIGN AND ENGINEERING OF IMPROVEMENTS. DEVELOPMENT OF BID PACKAGE	STAFF	MAY 1 - JULY 15, 1999
2.	BID PERIOD AND CONTRACTOR SELECTION	STAFF	JULY 15 - AUG 30, 1999
3.	FACILITY CONSTRUCTION	CONTRACTOR	SEPT 1 - SEPT 30, 1999
4.	ORDER CHEM-STORE BLDG, CAN CRUSHER, CAN OPENERS	STAFF	JULY 1, 1999

See reverse for completion instructions

ATTACH# 62
2

324

BUDGET

325

PRICING FOR CONCRETE

1044 @ 10.00 Per Yd. Verbal Quote GRANITE CONSTRUCTION
JACK FORSEER 1199

PRICING FOR ASPHALT

1230 @ 5.00 PER Yd Verbal Quote Granite Construction
JACK FORSEER 1199

PRICING FOR FENCE

\$5,500.00 PER PETE FARRELL JR. STEEL FENCE SYSTEMS.
170 LF 8' SLATED FENCE w/ Barbed Wire
1199

Engineering Costs

Civil Engineer

20 hours @ \$48.03 /hr internal rate

Miscellaneous Costs

clearing & moving shrubs, moving sprinklers, moving power
contingency.



326

Environmental Protection Associates, Inc.

Monday, December 07, 1998

Brian Kennedy
Santa Cruz County HHW Program
150 Roundtree Lane
Watsonville, CA 95076

Dear Brian:

Thanks for returning my call Friday. Sorry I missed you again. Attached is some materials we can work with to help define what what equipment appears to need a formal quotation.

The Edlund can openers have three models from manual to a production unit capable of 2000 cans per day. The modal 700 costs around \$800 plus tooling (less than \$200) and is capable of a few hundred cans per day. The model 610 is a powered version of the 700 costing in the low \$2000's. Big Bubba is the model 625 and is a serious production unit capable of 2000 cans per day, It sells for around \$4700 plus tooling.

The TeeMark can crusher line has a bit more depth. We either crush I's and smaller with the PCC1 or 6"s and smaller using the Super 6P. Normally there are over 90% I's and we will guide users to the PCC1 because the crush quality is the best. This is critical if you want to recycle the steel puck verses landfill it. In addition to the two sizes, we offer units with or without piercing, auto eject of the puck and Recycle Check, a neat trick to determine if the crush was complete so as to satisfy the steel recycler. Prices range from a low of \$7000 to the mid \$12,000's.

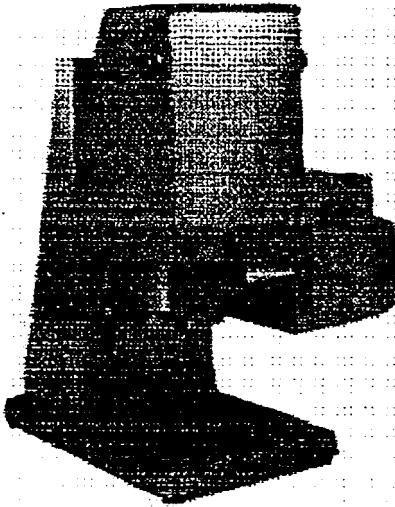
Please review the literature attached and then lets talk about your needs, budgets and time line. A price increase will soon take effect on the TeeMark fine. Thanks,

Sincerely,

A handwritten signature in cursive script that reads "Peter Barton". The signature is written in dark ink and is positioned above the printed name.

Peter Barton

327

Edlund**Crown Punch Can Openers**

The Model 625.. Can Opener is a heavy duty industrial opener with an alligator lid removal system. The 625A can open and de-lid up to 3,000 cans per day. It is constructed of stainless steel for easy cleaning and long lasting durability. No more reaching into the can for the lid. Operator safety as never before. Opens 8-12 cans per minute.

SPECIFICATIONS:

- 20" Long
- 26" Wide w/guard
- 27" Tall
- Shipping weight: appros. 275 lbs

FEATURES:

- Completely air operated
- Dual safety controls require two hand operation
- Convenient height adjustment
- Long life stainless steel knife
- Quick release knife for thorough cleaning
- Quick change tooling available for most can sizes
- Fast
- Reliable
- Sanitary
- Safe



Environmental Protection Associates, Inc.
 16415 29th Place SW, Seattle, SW 98166
 206/246-1200 800/298-3721 Fax-206/431-8021

1500. Base Price

ADD

225.00	KNIFE
180.00	Position guide
100.00	Magnant
12.00	CLIP
180	shipping
<u>5197.00</u>	ea.

Price Per Piece
 Barton
 1-5-99

1 37

ATTACHMENT 3

CanDoo!

Super 6/6P Can, Pail Crushers

Empty and crush 6-gallon and smaller containers . . . in preparation for recycling or disposal.



MULTIPURPOSE CRUSHING!

The Super 6/6P units crush six gallon pails and almost anything that is smaller. Aerosol cans, oil filters, and a variety of pails, cans and drums and are all crushed by these machines.

In addition, the Super 6P pierces and drains the contents from five and six gallon containers before crushing them flat.

CRUSHING FORCE OF 30,000 POUNDS

Crushes steel* containers so you can put up to 15 crushed cans in the space required by a whole can. Crushed five gallon pail shown.

CRUSHER STAND

Provides 41 inches of clearance for a 55 gallon drum on a roller conveyor.

LIQUID COLLECTION CAPABILITY

Liquids that are squeezed from containers may be collected in a 55 gallon drum or in a pail.

OPTIONAL ROLLER CONVEYOR

Maybe used to remove full drums from a user stand area.

*These units will also crush and squeeze the contents from plastic containers, but plastic tends to springback to its original size after crushing.

For more information, call us:

TOLL FREE 800/428-9900

From half pints to 110 gallons, TeeMark Can and Drum Crushers prepare containers and their contents for recycling or disposal. Specifications subject to change without notice.



Aitkin, Minnesota 56431
218/927-2200 • 800/428-9900 • FAX 218/927-2333



CanDoo!

Super 6 Series—Can/Pail Crushers



Environmental Protection
Associates, Inc. 329

800/299-3721

Prepares six gallon and smaller containers for recycling at the rate of 150-500 containers per hour!

OPEN OR CLOSED CONTAINER!

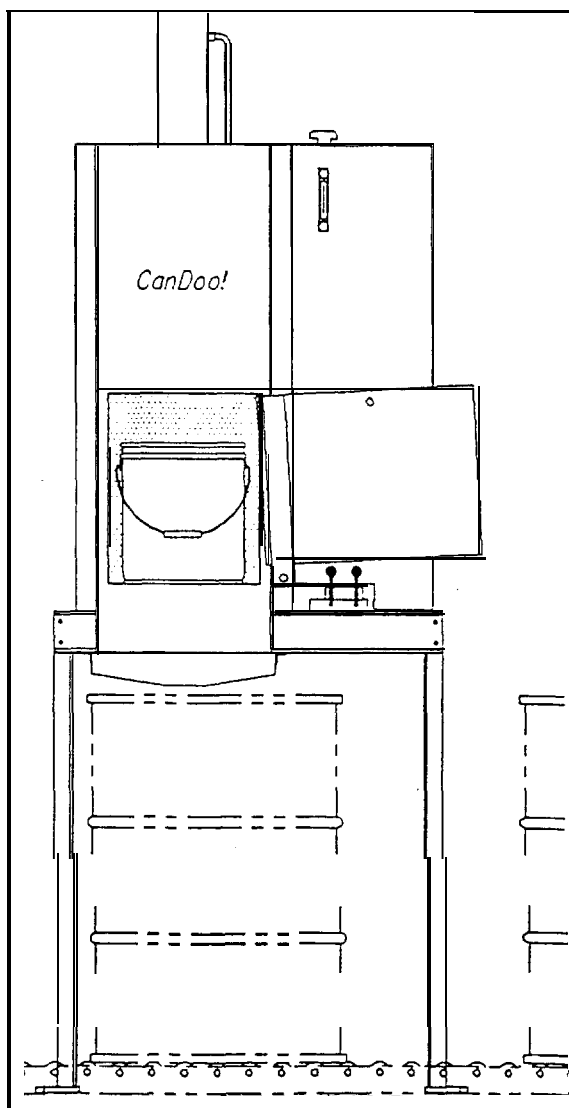
Choice of two models. The Super 6 crushes open containers on a grate. The Super 6P automatically pierces closed containers, and squeezes out contents while flattening.

CHOICE OF POWER

Super 6 models can be powered by shop air **or** explosion proof 115V AC.

SAFE. EXPLOSION PROOF

Units will not operate with door open. Power supplies are explosion proof and suitable for use with oil base paints or other flammable liquids.



HYDRAULICS

Rugged two-speed hydraulic pump provides 30,000 pounds of force.

LIQUID COLLECTION

Drum, pail, and customized liquid collection arrangements available.

RESULTS!

When crushing one container per cycle, each model can crush 150 containers per hour. With the Super 6P, there is no need to pry off can lids. That means faster processing lower labor costs, and reduced personal injury potential. Crushing capacity of **one-gallon cans** is four per cycle on **one** level, or eight cans if they are stacked. These machines also crush five oil filters per cycle!

30,000 pounds of crushing force smashes the strongest UN/DOT specification cans!

CanDoo! Super 6/6P Specifications

Crushing Force: 30,000 pounds
Crushing Chamber: 16" w x 16" d x 18" h
Cycle Time: 20 seconds
Power System Alternatives:
80 psi air @ 40 SCFM, or
115/230V Single Phase-20/10A
Explosion Proof Class 1, Group D

Dimensions: 37" w x 37" d x
Clearance Under Stand:
Pierced Hole

Approximate Shipping Weight:

Warranty: 1 year on all materials and workmanship

Super 6 (no piercer)	Super 6P (with piercer)
101" h	107" h
41"	41"
—	3x3"
760 lbs.	780 lbs.

We make a **full line of drum and pail crushers and in-drum hazardous waste compactors**

TeeMark Corporation • Aitkin, MN 56431 • 1-800-428-9900 • FAX 218-927-2333

16

ATTACHMENT 3

37



SAFETY STORAGE INC.

Represented by:

Thermal Dynamics
1190 Lincoln Avenue, Suite J
San Jose, Cd 95725
408/971-4547
FAX: 408/971-4549

Santa Cruz County
150 Roundtree Lane
Watsonville, C.4 95076

Date: 1/4/98
Phone: (83 1) 763-3 113
Fax: (83 1) 763-3118

Attn: Brian Kennedy

Safety Storage, Inc., on behalf of our representative Mr. J.T. **Simmonds** of Thermal Dynamics, is pleased to submit the following quotation for the manufacture of **Safety** Storage buildings. The specifications for each building are attached for your review. A diagram of each will be sent to you for approval upon placement of your order. Note that your Safety Storage building will be **manufactured** based on the information provided by this diagram. Please approve the diagram by returning a signed copy with your purchase order. The following quotation will be honored for a period of sixty (60) days from the date of the qcotc.

ONE (1) MODEL 1010FS SAFETY STORAGE BUILDING \$10,515.00*

**Price includes accessories listed below*

ONE (1) MODEL 1610FS SAFETY STORAGE BUILDING.....\$14,815.00*

**Rice includes accessories listed below*

DOOR, DOUBLE

UL Classified and Labeled., 3-hour fire-rated swinging type double door (60"W x 80"H) located on front of building, Door frame and hardware are UL Listed & Labeled. Active door leaf (36"W x 80"H) equipped with a UL Listed self-closer and an exterior UL Listed keyed security lock with an interior safety release lever handle. Passive door leaf (24"W x 80"H) is equipped with manually-operated top and bottom UL Listed surface bolts. Active door serves as personnel entrance and exit door complying with life safety & ADA requirements, while the double door opening facilitates pallet loading & unloading,

FLOOR GRATING, STEEL

Rectangular design with galvanized steel finish for maximum corrosion resistance. Main bearing bars are 1" x 1/8" and spaced 1-3/16" center-to-center to ensure maximum spill containment collection. Cross bars are resistance welded at right angles to

+ 600 shifting
+ TAX

331

County agrees to accept title to the shipment, be invoiced for the shipment, and pay the invoice per specified terms. If Santa Cruz County is unable to accept delivery after two (3) weeks from the date of initial invoice, storage charges of \$500.00 per week, per building will accrue and be invoiced weekly.

Delivery terms are F.O.B. Factory, unless otherwise approved by Safety Storage, Inc.. A down payment of 25 % is also required with each order. The balance is due and payable NET 30 days from date of invoice.

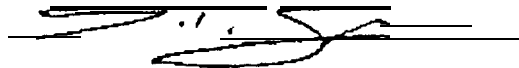
Delivery takes approximately 10- 12 weeks from our receipt of your purchase order, down payment, and signed diagram.

Please indicate the following "Remit To" address on your purchase order:

Safety Storage, Inc.
P.O. Box 49093
San Jose, CA 95161

If you should have any questions or comments regarding this quotation, please contact J.T. Simmonds at (408) 971-4547.

Sincerely,



Safety Storage

1 37

3

ATTACHMENT 3

bearing bars and spaced 4" center-to-center for maximal strength. Designed to sustain a uniformly distributed load of 500 psf.

SHELVING (1610FS – 90 lineal feet, 1010FS – 72 lineal feet)

Epoxy-coated heavy-gauge steel adjustable shelving. Each shelf is 16" deep with a 1" lip on its front, back and side edges for secondary spill containment.

LIGHTING, INTERIOR

Interior UL-Listed explosion-proof incandescent light fixture with a 150W lamp (120V, 1.25A, 1-Phase), rated for Class I, Groups C & D, Division 1, Hazardous Locations. Heavy-duty glass globe with a sealed heavy-duty aluminum housing and equipped with a protective metal guard.

LOAD CENTER

UL Listed, 240/120V, single-phase load center (NEMA 3R) with circuit breaker(s) and main breaker.

DRY CHEMICAL FIRE SUPPRESSION SYSTEM

UL Listed & FM. Approved pre-engineered system rated for Class A, B and C Fires. Fusible link detection for automatic actuation. Two (2) exterior means of manual activation. Interior nozzle(s) for total flooding application. One (1) exterior UL Listed weatherproof audible alarm (120V, 0.1A, 1-Phase). Dry chemical agent storage cylinder (tank) and releasing device housed inside an exterior tamper-proof (key lockable) enclosure per the requirements of NFPA 17 (*Standard for Dry Chemical Extinguishing Systems*). System equipped with a means for remote annunciation. Automatic ventilation system shutdown (if applicable) upon system actuation.

*Off-Loading, Tax, and Freight charges are not included

Santa Cruz County will be required to provide freight handling equipment to off-load the sumps from the transport vehicle upon its arrival.

Santa Cruz County is responsible for all applicable sales or use taxes; these taxes are not included in the price quoted. Applicable sales or use taxes should be added to the purchase order. If tax exempt, please supply a copy of your Tax Exempt Certificate. with your purchase order.

Safety Storage will deliver to **Santa Cruz County**, all products purchased hereunder, F.O.B. Factory. Shipments will be made as sumps are completed. If for any reason **Santa Cruz County** is unable to accept delivery when shipments are ready, **Santa Cruz**



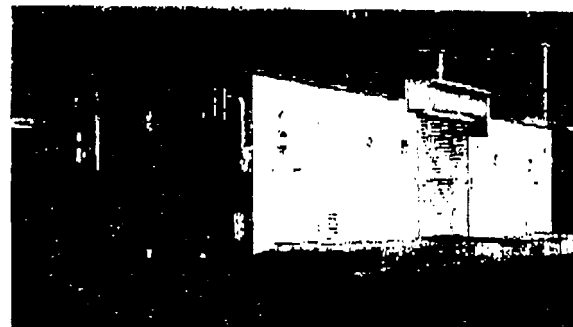
Non-combustible Steel and 2-hour Fire-Shield™

333

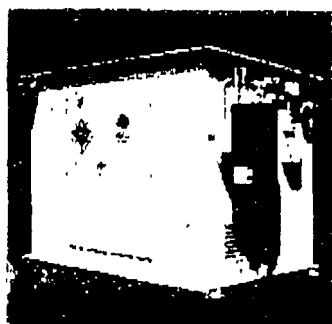


Prefabricated, Relocatable Buildings for the Storage, Handling, and Dispensing of Chemicals and Hazardous Materials

Building lengths
and widths
are selectable
in 2-foot
increments to
meet specific
space and
storage
requirements!



The 2X2™ Series of hazardous materials storage buildings from Safety Storage gives you new freedom in specifying the right structure for your application. This flexible series of buildings simplifies size selection. Pre-engineered designs accommodate any drum quantity and floorplan requirements.



■ A Building to Fit Virtually Every Space and Storage Requirement

Sizes range from 6 drum to 150 drum capacities (single level storage). Buildings are available in 6', 8', 10', 12' and 14' nominal widths with lengths in 2' increments up to 62'. Or put buildings end-to-end or side-by-side for even greater capacity.

■ Quality Manufacturing

Safety Storage buildings are fabricated from heavy gauge steel, structural channel and tubing, and are protected by durable chemical-resistant coatings. Fire-Shield™ buildings also incorporate UL Classified fire-resistive gypsum board. Stainless steel is also available for highly corrosive applications.

■ Gives You the Protection You Need

Safety Storage buildings enable you to protect your personnel and property

from hazardous materials, while limiting your liability and achieving regulatory compliance with federal, state, and local regulations. Our buildings ensure compliance with Uniform Building & Fire Codes, BOCA National Building & Fire Codes, and the Standard Building & Fire Codes for the design, construction, and use of Group H occupancies.

■ The Economical Solution

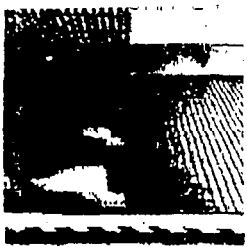
Prefabricated buildings offer major cost savings over conventional building construction, additions, and conversions. They also speed the permitting process and eliminate costly construction delays. In some cases, they will reduce property taxes and accelerate depreciation.



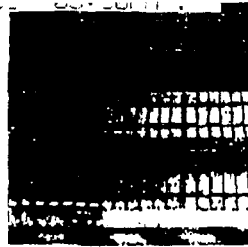
* Contact factory for details.

37

ATTACHMENT 3



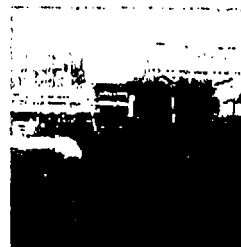
■ Fiberglass floor grating



□ Galvanized steel floor grating



■ Explosion-proof lighting



■ Dry chemical nozzle, fusible link and gas sensor module



■ Explosion-proof convection hearing

P. 4/4

334



■ Explosion vent panel

Optional Environmental Controls and Safety Accessories

Special needs such as air conditioning, heating, fire suppression systems, explosion-proof electricals, partitioning and workstations can be factory installed in the structures. In addition, we can install a wide range of special process equipment to provide a turnkey, integrated structure that is ready to use,

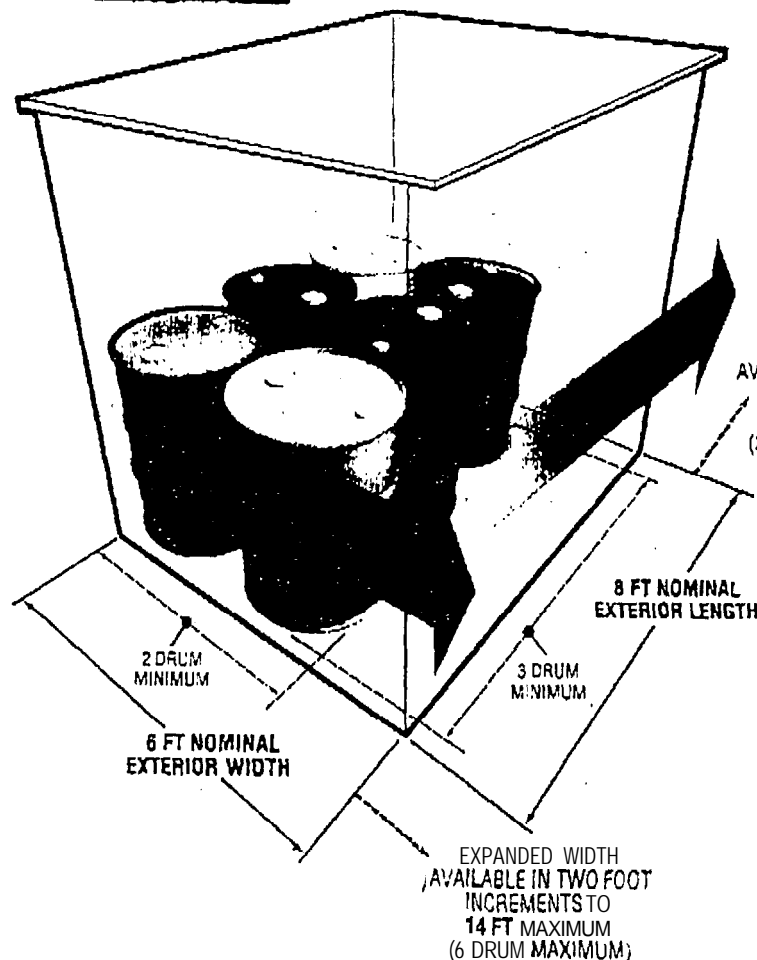
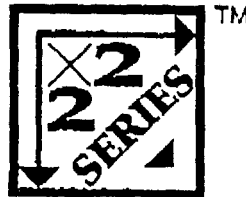


a Delivery and Installation

In addition to the basic structure, we can provide delivery and installation service. Our expert service crew can commission your building on site, ready for use.

a Contact Us Today for Details

If your future plans include a hazardous materials Safety Storage building, we're confident that you'll find that we have the right combination of product, expertise, and personal commitment that you're looking for.



& presented by:



SAFETY STORAGE

SAFETY STORAGE, INC.
2301 Bert Drive
Hollister, CA 95023
Phones 1-800-344-6539 • 408-637-5955
Fax 408-637-7405
E-mail info@safetystorage.com
Web: www.safetystorage.com

Specifications subject to change without notice. © Copyright 1999 Safety Storage, Inc.

37

21

ATTACHMENT 3