



County of Santa Cruz

513

DEPARTMENT OF PUBLIC WORKS

701 OCEAN STREET, ROOM 410, SANTA CRUZ, CA 95060
(831) 454-2160 FAX (831) 454-2385 TDD (831) 454-2123

JOHN A. FANTHAM
DIRECTOR OF PUBLIC WORKS

AGENDA: APRIL 13, 1999

April 1, 1999

SANTA CRUZ COUNTY BOARD OF SUPERVISORS

701 Ocean Street
Santa Cruz, California 95060

SUBJECT: TRACT 1334 - DIAMOND ESTATES, EAST OF GREEN VALLEY ROAD
ON THE SOUTH SIDE OF PAULSEN ROAD, WATSONVILLE

Members of the Board:

On August 19, 1997, the Board of Supervisors approved the final map for this subdivision. The Public Works Department inspected the constructed improvements and found they are complete and acceptable. The Green Valley-Paulsen Road intersection, however, is yet to be completed due to the 30-day controller testing requirement for the traffic signal. A sufficient amount of funds (\$75,000) is being retained to complete this item. The developers provided a Letter of Credit to cover the following:

| | |
|---|----------------------|
| Faithful Performance Security | \$1,930,000.00 |
| Minus Partial release by Board of Supervisors August 25, 1998 | \$ -482,500.00 |
| Retained for Guarantee, Warranty, and Maintenance of Work Security | \$ -965,000.00 |
| Traffic Signal | <u>\$ -75,000.00</u> |
| Faithful Performance amount to be released | <u>\$ 407,500.00</u> |
| Labor and Materials Security | \$ 965,000.00 |

The Subdivision Agreement provides that at the time the Board of Supervisors accepts the improvements, and coincident with the release of the Faithful Performance Security, a sufficient amount of said security shall be retained to provide for the Guarantee, Warranty, and Maintenance of Work Security (\$965,000), as shown above.

The inspection fee has been paid in full.

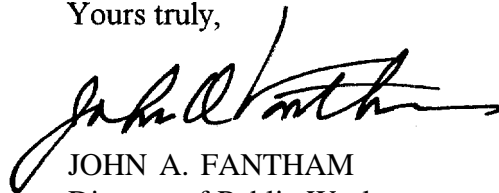
Agate Drive, Lapis Drive, Onyx Drive, Celia Drive, and Parcel "A" will be accepted into the county maintained road system and are shown on the map entitled Tract 1334, filed for record on September 3, 1997, in Volume 93 of Maps at Page 5, Santa Cruz County Records.

Within the subdivision it was determined that four stop signs were required as improvements to regulate the intersections on the internal roads. Attached is an ordinance to amend Chapter 9 of Santa Cruz County Code to include these stop signs.

It is therefore recommended that the Board of Supervisors take the following action:

1. Accept the site improvements as complete in accordance with previously approved plans.
2. Adopt the attached resolution accepting all streets and Parcel "A" into the County Maintained System.
3. Adopt in concept the attached ordinance amending Chapter 9.28 of the County Code and place it on the next available agenda for final adoption.
4. Direct the Clerk of the Board to release the Faithful Performance Security amount of \$407,500.00.
5. If, at the end of three months, a search of the records by the Auditor-Controller's Office reveals no posted liens against the project, authorize the Clerk of the Board to release the Labor and Materials Security. The Guarantee, Warranty, and Maintenance of Work Security will be released at the end of twelve months provided there are no problems with the improvements.
6. Direct the Clerk of the Board to release funds reserved for the traffic signal when installation is approved by Public Works.

Yours truly,

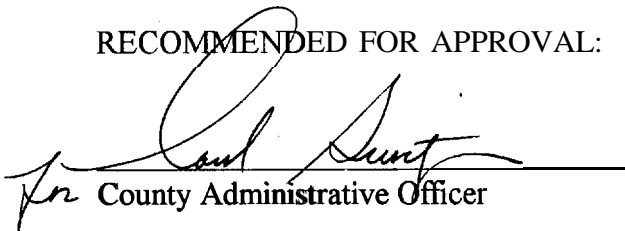


JOHN A. FANTHAM
Director of Public Works

CRG:mg

Attachments

RECOMMENDED FOR APPROVAL:



for County Administrative Officer

copy to: Building Inspection
Public Works Department

BEFORE THE BOARD OF SUPERVISORS
OF THE COUNTY OF SANTA CRUZ, STATE OF CALIFORNIA

RESOLUTION NO. ____

On the motion of Supervisor
duly seconded by Supervisor
the following resolution is adopted:

RESOLUTION ACCEPTING AGATE DRIVE, LAPIS DRIVE, ONYX DRIVE
CELIA DRIVE AND PARCEL "A" INTO THE COUNTY MAINTAINED ROAD SYSTEM

WHEREAS, Agate Drive, Lapis Drive, Onyx Drive, Celia Drive and Parcel "A" have been constructed and improved to a suitable design standard; and

WHEREAS, the Director of Public Works recommends that said streets be accepted into the County Maintained Road System; and

WHEREAS, the Board of Supervisors finds, determines, and declares that the public convenience and necessity will be served if said streets hereinafter described are maintained as a part of the County Maintained Road System.

NOW, THEREFORE, BE IT RESOLVED AND ORDERED that all those portions of streets as shown upon that certain map entitled, Tract 1334, Volume 93 of Parcel Maps, Page 5, be hereby accepted into the County Maintained Road System in accordance with Section 941 of the Streets and Highways Code.

PASSED AND ADOPTED by the Board of Supervisors of the County of Santa Cruz, State of California, this d a y o f _____, 1999, by the following vote:

AYES: SUPERVISORS

NOES: SUPERVISORS

ABSENT: SUPERVISORS

Chairperson of said Board

ATTEST: _____

Clerk of said Board

Approved as to form:

 3-30-99

Chief Assistant County Counsel

Distribution:

Assessor

County Counsel

Planning

Public Works

Recorder

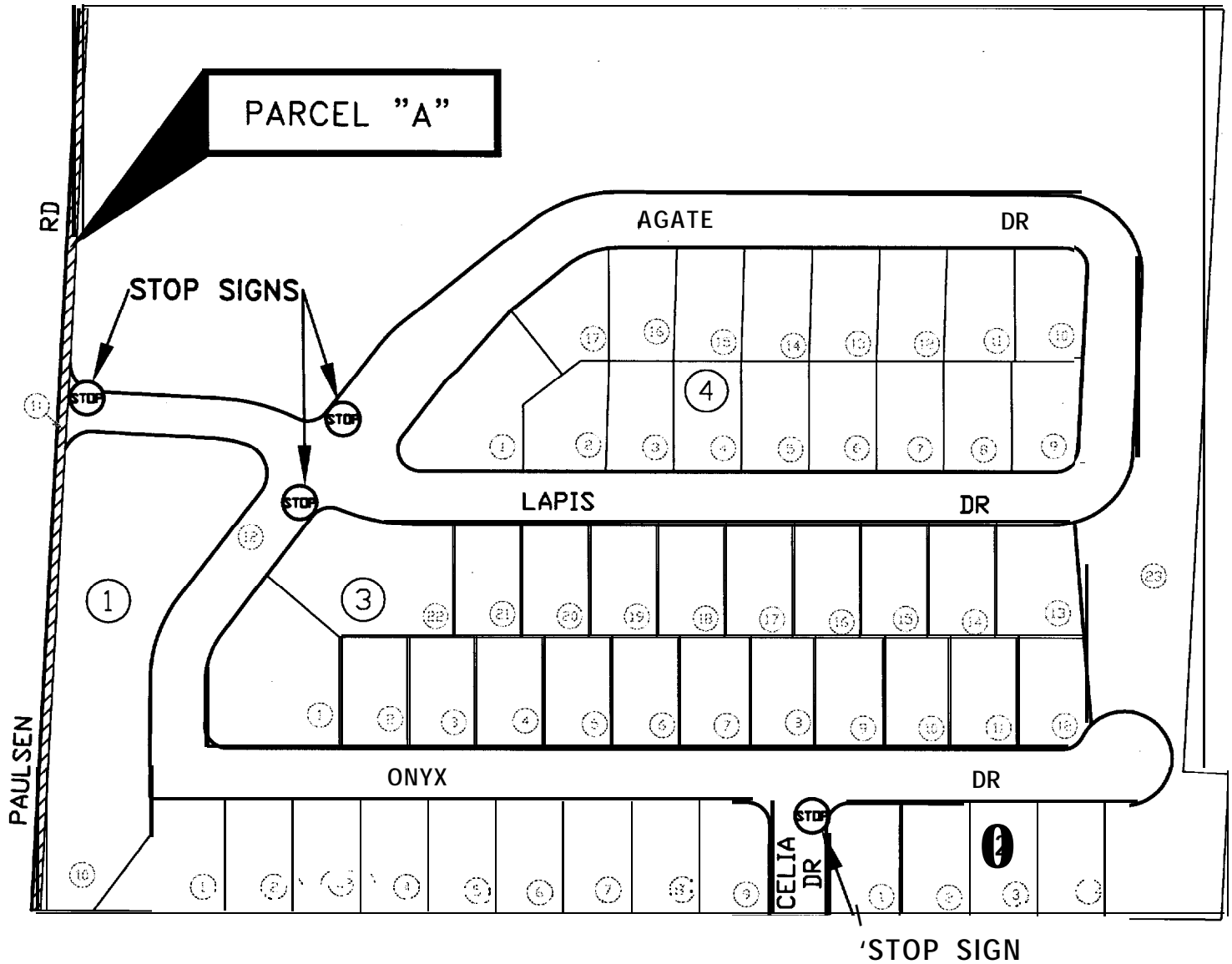
Sheriff

Surveyor

DIAM



N.T.S.



SANTA CRUZ COUNTY

PUBLIC WORKS DEPARTMENT

ROAD ACCEPTANCE

TRACT 1334 - DIAMOND ESTATES

AGATE DR., LAPIS DR., ONYX DR., CELIA DR., AND PARCEL "A"

APN: 51-641-01 TO 12, 51-642-02 TO 04

51-643-01 TO 23 & 51-644-01 TO 17

LOCATION MAP

ORDINANCE NO. _____

ORDINANCE AMENDING CHAPTER 9 OF THE SANTA CRUZ COUNTY CODE
RELATING TO STOP INTERSECTIONS

The Board of Supervisors of the County of Santa Cruz
does ordain as follows:

SECTION I

Section 9.28.020 - Stop intersections designated, is
hereby amended by adding paragraph A.2.5 to read:

A.2.5. On Agate Drive, at Lapis Drive;

SECTION II

Section 9.28.020 - Stop intersections designated, is
hereby amended by adding paragraph C.15.5 to read:

c.15.5. On Celia Drive, at Onyx Drive;

SECTION III

Section 9.28.020 - Stop intersections designated, is
hereby amended by adding paragraph L.7.5 to read:

L.7.5. On Lapis Drive, at Paulsen Road;

SECTION IV

Section 9.28.020 - Stop intersections designated, is
hereby amended by adding paragraph O.6.5 to read:

O.6.5. On Onyx Drive, at Lapis Drive;

SECTION V

This Ordinance shall take effect on the **31st** day after the date of final passage.

PASSED AND ADOPTED by the Board of Supervisors of the County of Santa Cruz, State of California, this _____ day of _____, 1999, by the following vote;

AYES: SUPERVISORS

NOES: SUPERVISORS

ABSENT: SUPERVISORS

Chairman of said Board

ATTEST: _____
Clerk of said Board

Approved as to form:

DMRae 3-30-99
Assistant County Counsel

Distribution: County Counsel
Public Works Department

ORDINANCE NO. _____

ORDINANCE AMENDING CHAPTER 9 OF THE SANTA CRUZ COUNTY CODE
RELATING TO STOP INTERSECTIONS

The Board of Supervisors of the County of Santa Cruz
does ordain as follows:

SECTION I

Section 9.28.020 - Stop intersections designated, is
hereby amended by adding paragraph A.2.5 to read:

A.2.5. On Agate Drive, at Lapis Drive;

SECTION II

Section 9.28.020 - Stop intersections designated, is
hereby amended by adding paragraph C.15.5 to read:

c.15.5. On Celia Drive, at Onyx Drive;

SECTION III

Section 9.28.020 - Stop intersections designated, is
hereby amended by adding paragraph L.7.5 to read:

L.7.5. On Lapis Drive, at Paulsen Road;

SECTION IV

Section 9.28.020 - Stop intersections designated, is
hereby amended by adding paragraph O.6.5 to read:

O.6.5. On Onyx Drive, at Lapis Drive;

SECTION V

This Ordinance shall take effect on the 31st day after the date of final passage.

PASSED AND ADOPTED by the Board of Supervisors of the County of Santa Cruz, State of California, this _____ day of _____, 1999, by the following vote;

AYES: SUPERVISORS

NOES: SUPERVISORS

ABSENT: SUPERVISORS

Chairman of said Board

ATTEST: _____
Clerk of said Board

Approved as to form:

D. M. R. 3-30-99
Assistant County Counsel

Distribution: County Counsel
Public Works Department