



County of Santa Cruz

DEPARTMENT OF PUBLIC WORKS

701 OCEAN STREET, ROOM 410, SANTA CRUZ, CA 95060
(831) 454-2160 FAX (831) 454-2385 TDD (831) 464-2123

JOHN A. FANTHAM
DIRECTOR OF PUBLIC WORKS

AGENDA: June 8, 1999

May 26, 1999

SANTA CRUZ COUNTY BOARD OF SUPERVISORS
701 Ocean Street
Santa Cruz, California 95060

SUBJECT: TRACT 1400, PACIFIC POINTE LOCATED ON THE NORTH SIDE
OF 30TH AVENUE NORTH OF CAPITOLA, APN 3 1-071-15,32,33
ACCEPTANCE OF ROADS INTO COUNTY MAINTAINED SYSTEM
PROPOSED NEW STOP SIGN AND ONE-WAY DESIGNATION

Members of the Board:

On April 29, 1998, the Board of Supervisors approved the final map for this subdivision. The Public Works Department inspected the constructed improvements and found they are complete and acceptable. The developers provided a letter of credit to cover the following:

Faithful Performance Security.....\$432,300.00

Labor and Materials Security.. . . . \$216,150.00

The Subdivision Agreement provides that at the time the Board of Supervisors accepts the improvements, and coincident with the release of the Faithful Performance Security, a sufficient amount of said security shall be retained to provide for the Guarantee, Warranty, and Maintenance of Work Security (\$216,150.00).

The inspection fee has been paid in full.

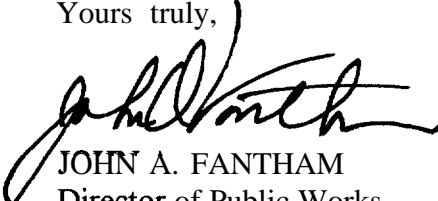
Samuel Place (Parcel B), Parcel A and Parcel C are to be accepted into the County Maintained System and are shown on the map entitled Tract 1400, filed for record on April 29, 1998, in Volume 94 of Maps at Page 4, Santa Cruz County Records.

Within the subdivision it was determined that a stop sign was required as an improvement to regulate the intersection on Samuel Place. Attached is an ordinance to amend Chapter 9 of Santa Cruz County Code to include the stop sign. In addition, the proposed ordinance will reduce the one-way section of Axford Road from the emergency vehicle access road to Catalina Drive.

It is therefore recommended that the Board of Supervisors take the following action:

1. Accept the site improvements as complete in accordance with previously approved plans.
2. Adopt the attached resolution accepting Samuel Place (Parcel B), Parcel A and Parcel C into the County Maintained Road System.
3. Consider adoption of the attached ordinance amending Chapter 9.28 of the County Code and place it on the next available agenda for final adoption.
4. Direct the Clerk of the Board to release the Faithful Performance Security and retain sufficient funds from the Faithful Performance Security to provide for the Guarantee, Warranty and Maintenance of Work Security.
5. If, at the end of three months, a search of the records by the Auditor-Controller's Office reveals no posted liens against the project, authorize the Clerk of the Board to release the Labor and Materials Security. The Guarantee, Warranty, and Maintenance of Work Security will be released at the end of twelve months provided there are no problems with the improvements.

Yours truly,



JOHN A. FANTHAM
Director of Public Works

CRG:rw

Attachments

RECOMMENDED FOR APPROVAL:



County Administrative Officer

copy to: Building Inspection
Public Works Department

BEFORE THE BOARD OF SUPERVISORS
OF THE COUNTY OF SANTA CRUZ, STATE OF CALIFORNIA

RESOLUTION NO. -

On the motion of Supervisor
duly seconded by Supervisor
the following resolution is adopted:

RESOLUTION ACCEPTING SAMUEL PLACE (PARCEL "B") PARCEL "A" AND PARCEL "C"
INTO THE COUNTY MAINTAINED ROAD SYSTEM

WHEREAS, Samuel Place (Parcel B), Parcel "A" and Parcel "C" have been
constructed and improved to a suitable design standard; and

WHEREAS, the Director of Public Works recommends that said streets be accepted
into the County Maintained Road System; and

WHEREAS, the Board of Supervisors finds, determines, and declares that the public
convenience and necessity will be served if said streets hereinafter described are maintained as a part
of the County Maintained Road System.

NOW, THEREFORE, BE IT RESOLVED AND ORDERED that all those portions of
streets as shown upon that certain map entitled, Tract 1400, Pacific Pointe are hereby accepted into
the County Maintained Road System in accordance with Section 941 of the Streets and Highways
Code.

PASSED AND ADOPTED by the Board of Supervisors of the County of Santa Cruz,
State of California, this d a y o f
_____, 1999, by the following vote:

AYES: SUPERVISORS
NOES: SUPERVISORS
ABSENT: SUPERVISORS

Chair of said Board

ATTEST: _____
Clerk of said Board

Approved as to form:

Samuel Taniguchi 5/21/99
Chief Assistant County Counsel

Distribution: Assessor County Counsel Planning
Public Works Recorder Sheriff
Surveyor

PPNR

ORDINANCE NO. _____

ORDINANCE AMENDING CHAPTER 9 OF THE SANTA CRUZ COUNTY CODE
RELATING TO ONE-WAY STREETS AND STOP INTERSECTIONS

The Board of Supervisors of the County of Santa Cruz
does ordain as follows:

SECTION I

Section 9.20.010 - One-way streets designated, is
hereby amended by amending paragraph 2. to read:

2. Axford Road, westbound **from approximately 425 feet
west of** Lotman Drive westerly to end;

SECTION II

Section 9.28.020 - Stop intersections designated, is
hereby amended by adding paragraph S.1.5. to read:

s.1.5. On Samuel Place, at 30th Avenue;

SECTION III

This Ordinance shall take effect on the 31st day after
the date of final passage.

PASSED AND ADOPTED by the Board of Supervisors of the
County of Santa Cruz, State of California, this _____ day of
_____, 1999, by the following vote;

AYES: SUPERVISORS
NOES: SUPERVISORS
ABSENT: SUPERVISORS

Chairman of said Board

ATTEST: _____
Clerk of said Board

Approved as to form:
Samuel Taylor 5/24/99

Assistant County Counsel

Distribution: County Counsel
Public Works Department

ORDINANCE NO. _____

ORDINANCE AMENDING CHAPTER 9 OF THE SANTA CRUZ COUNTY CODE
RELATING TO ONE-WAY STREETS AND STOP INTERSECTIONS

The Board of Supervisors of the County of Santa Cruz
does ordain as follows:

SECTION I

Section 9.20.010 - One-way streets designated, is
hereby amended by amending paragraph 2. to read:

2. Axford Road, westbound from approximately 425 feet
west of Lotman Drive westerly to end;

SECTION II

Section 9.28.020 - Stop intersections designated, is
hereby amended by adding paragraph S.1.5. to read:

S.1.5. On Samuel Place, at 30th Avenue;

SECTION III

This Ordinance shall take effect on the 31st day after
the date of final passage.

PASSED AND ADOPTED by the Board of Supervisors of the
County of Santa Cruz, State of California, this _____ day of
_____, 1999, by the following vote;

AYES: SUPERVISORS
NOES: SUPERVISORS
ABSENT: SUPERVISORS

Chairman of said Board

ATTEST: _____
Clerk of said Board

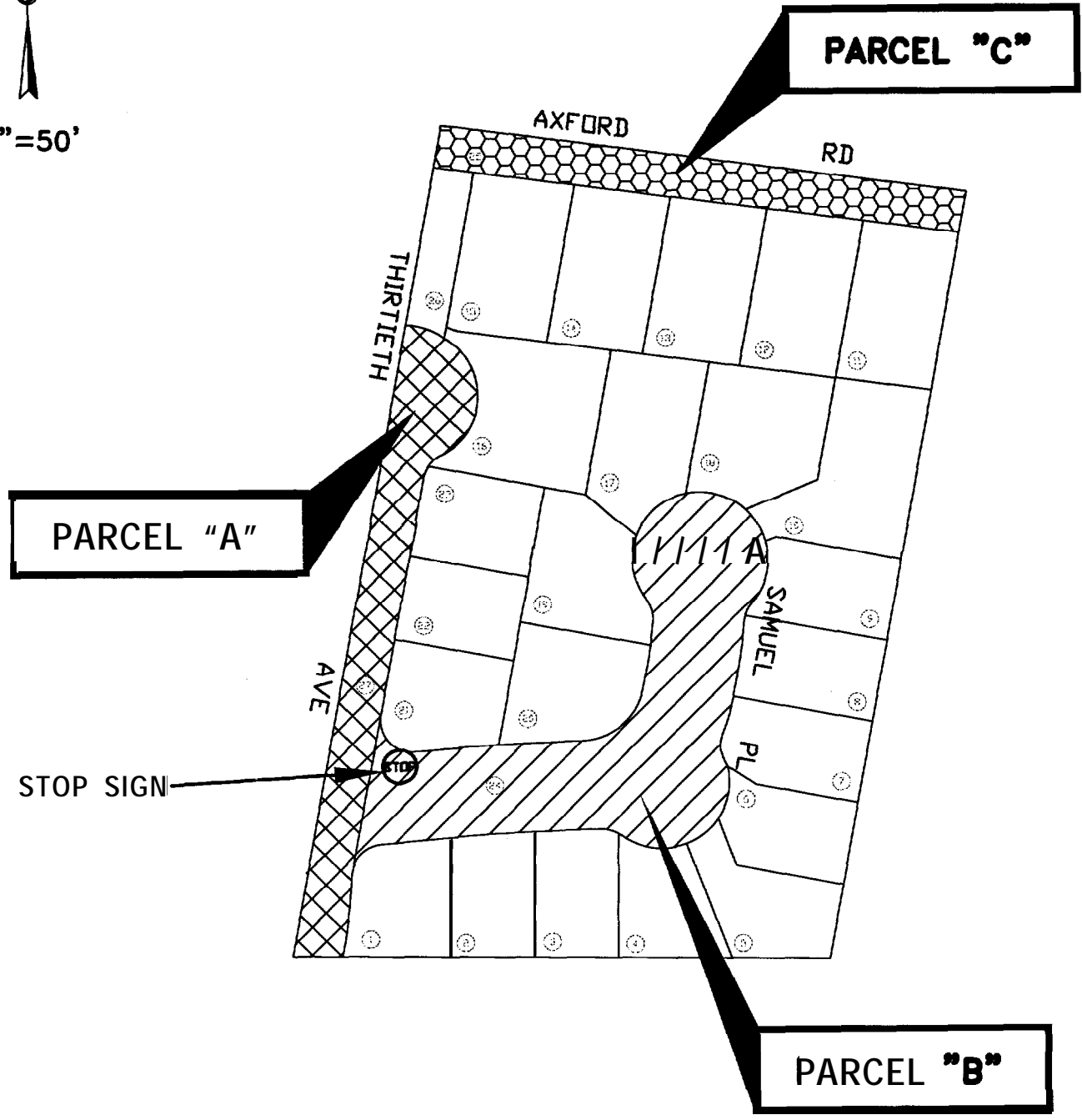
Approved as to form:
Samuel Tovar 5/24/99

Assistant County Counsel

Distribution: County Counsel
Public Works Department



1"=50'



SANTA CRUZ COUNTY
 PUBLIC WORKS DEPARTMENT
 ROAD ACCEPTANCE
 TRACT 1400 - PACIFIC **POINTE**
 30TH AVENUE & CAPITOLA ROAD
 APN: 31-251-01 THRU 27
5 LOCATION MAP