



County of Santa Cruz

AUDITOR-CONTROLLER'S OFFICE
701 OCEAN STREET, SUITE 100, SANTA CRUZ, CA 950604073
(831) 454-2500 FAX (831) 454-2660

GARY A. KNUTSON, AUDITOR-CONTROLLER

Chief Deputy Auditor-Controllers
Pam Silbaugh, Accounting
Suzanne Young, Audit and Systems
Kathleen Hammons, Budget and Tax

June 2, 1999

AGENDA: June 15, 1999

BOARD OF SUPERVISORS
County of Santa Cruz
701 Ocean Street
Santa Cruz, CA 95060

SUBJECT: QUARTERLY FINANCIAL UPDATE

Dear Members of the Board:

Attached is the Auditor-Controller's Financial Update Report for the period from July 1, through March 31, 1999.

It is therefore RECOMMENDED that your Board accept and file the Auditor-Controller's Quarterly Financial Update.

Very truly yours,

GARY A. KNUTSON
Auditor-Controller

RECOMMENDED:

SUSAN A. MAURIELLO
County Administrative Officer

AUDITOR-CONTROLLER'S OFFICE

FINANCIAL UPDATE

FOR

THIRD FISCAL QUARTER


1998-99

TABLE OF CONTENTS

REPORT ON QUARTERLY FINANCIAL ACTIVITY

<u>REPORTS</u>	<u>PAGE NUMBER</u>
Auditor's Letter	a
EXPENDITURES ANALYSIS	
Reconciliation of Final Budget to Midyear Changes-Expenditures	2
Budget to Expenditures Analysis-Modified Cash Basis	3
Salary Savings Projection	4
Salary Savings Analysis Summary - Based upon Vacant Positions	5
Salary Savings Analysis Based on Vacant Positions	6
Extra Help Pay	7
Overtime Pay	8
Salary Savings Analysis Detail by Department	9
New Hire & Terminations by Department	27
Vacant Position Summary	28
Vacant Position Summary-Detail	29
General Fund Contingencies	30
REVENUE ANALYSIS	
Reconciliation of Final Budget to Midyear Changes-Revenue	32
Budget Revenue Analysis-Modified Cash Basis	33
Revenue Trends-Non Departmental-Cash Basis	34
Comparison of Prior Year Revenue to Current Year Revenue	35
Treasurer Portfolio Yield at a Glance	36
Treasurer Portfolio Structure as of March 30, 1999	37
Criminal Justice Facility Fund	38
Courthouse Temporary Construction Fund	38
CASH FLOW ANALYSIS	
Statement of Cash Position-General Fund and Trans Borrowing	40
Cash Flow Summary	41
OTHER ANALYSIS	
Consumer Price Indexes	43
Statistics-Year to Date	44
Average Daily Number of Inmates	47

COUNTY OF SANTA CRUZ
Auditor-Controller's Office
Inter-Office Correspondence

To: Board of Supervisors
CC: Each Department Head
From: Gary A. Knutson 
Date: June 1, 1999
Subject: Financial Update-Third Quarter

We have completed the Financial Update for the quarter ended March 31, 1999. This report contains some information that actually extends beyond the date of the third quarter. Below is a summary of the results of operations.

EXPENDITURES

The expenditure trend is very consistent with the prior fiscal period. Presently, the County is exceeding the salary savings goals on a county-wide basis. There are a few departments still showing a significant use of overtime and extra help. The overtime and extra help pay schedules reflect its usage, but the salary savings goal should be achieved regardlessly.

With regard to salary savings, we have attempted to identify those vacant positions or portions thereof that are largely financed with General Fund dollars. In doing so, we have eliminated a number of vacant positions from the vacant position report that are funded by external revenue sources. The eliminations are made in order to avoid counting these amounts as savings. Vacant grant funded positions do not generate salary savings. Since July 1, 1998 there have been 194 equivalent units of vacant positions. Out of the 194 equivalent units, 47 are HSA and 74 are HRA budgeted positions.

In order to project salary savings, we are making reliance upon one of the County's management tools that compares the amended budget to expenditures to date plus the extension of the most current pay period payroll for the remainder of the fiscal year. This report takes into account certain items not taken into account from the vacant position analysis such as additional savings due to turnover resulting in hiring a new employee at a lower salary range than the former employee. We believe this report better reflects the difference between budget and expenditures although one analysis tends to support the other.

It appears that the Court Wards budget is on target as amended.

REVENUES

The departmental revenue trends are very consistent with the prior year. The non-departmental revenues reflect a stronger than expected economy. The non-departmental revenues will fluctuate from quarter to quarter. Presently, these revenues are 8 % over the quarterly estimated amounts. The sales taxes, utility tax, interest, and transient occupancy tax account for the greatest share of the increase of quarterly budget to actual comparisons.

CASH FLOW

Our cash flow compare well with last year at this date.

STATISTICS

Workload statistics indicate a continued decrease in the welfare case load, a decrease in clinic activity, a decrease in the unemployment rate, decrease in court related filings, and a decrease in the inmate population.

As requested, we have included workload statistics related to the juvenile hall. We appreciate the efforts of the Probation Department in gathering this data.

It is recommended that your Board accept and file this report.

Sincerely,



Gary A. Knutson
Auditor-Controller

EXPENDITURE ANALYSIS

COUNTY OF SANTA CRUZ
GENERAL FUND
RECONCILIATION OF FINAL BUDGET TO MIDYEAR CHANGES- EXPENDITURES
FOR FISCAL QUARTER ENDED MARCH 31, 1999

DESCRIPTION	FINAL BUDGET	MIDYEAR CHANGES*	AMENDED FINAL BUDGET
SALARIES AND EMPLOYEE BENEFITS	\$107,896,718	\$693,444	\$108,590,162
SERVICES AND SUPPLIES	69,343,699	1,542,578	70,886,277
OTHER CHARGES	61,687,819	1,515,931	63,203,750
FIXED ASSETS	1,647,691	635,622	2,283,313
OTHER FINANCING USES	14,313,629	0	14,313,629
INTRAFUND TRANSFERS	(15,801,730)	(408,255)	(16,209,985)
APPROPRIATIONS FOR CONTINGENCIES	1,835,849	(235,935)	1,599,914
TOTAL EXPENDITURES	\$240,923,675	\$3,743,385	\$244,667,060

COUNTY OF SANTA CRUZ
 AUDITOR CONTROLLER
 BUDGET TO EXPENDITURES ANALYSIS-MODIFIED CASH BASIS'
 JULY 1, 1998 TO MARCH 31, 1999

INDEX	DESCRIPTION	CURRENT APPROPRIATIO	EXPENDED TO DATE	% EXP	% P/Y
		244,667,060	155,747,267	63.66%	64.54%
103000	AGRICULTURAL COMMISSIONER & WTS 8 MEAS	1,325,387	842,301	63.55%	70.53%
106000	AGRICULTURAL EXTENSION SERVICES	105,748	55,836	52.80%	60.76%
109000	ASSESSOR	2,555,100	1,585,109	62.04%	64.83%
120000	AUDITOR-CONTROLLER	1,998,728	1,256,318	62.86%	65.26%
131220	REVENUE AUDITOR -GENERAL FUND	58,386	(62,601)	-107.22%	75.89%
131215	CERTS / DEBT SERVICE	7,688,573	2,311,379	30.06%	60.98%
131375	APPROPRIATION RESERVE - GENERAL	1,599,914	0	0.00%	0.00%
131604	POLICE PROTECTION-OTHER	4,570,000	3,427,500	75.00%	75.00%
131811	AIR POLLUTION	31,464	31,464	100.00%	99.63%
131820	ANIMAL POUND	753,009	564,312	74.94%	74.88%
131830	AMBAG	34,141	33,841	99.12%	97.10%
131845	CAO-LAFCO	239,100	123,901	51.82%	40.88%
134900	COMMUNITY SERVICES	465,702	365,369	78.46%	94.78%
151000	BOARD OF SUPERVISORS	1,363,613	931,560	68.32%	69.13%
161000	COMMISSION	103,932	60,093	57.82%	65.07%
181000	COUNTY ADMINISTRATIVE OFFICE	1,717,181	1,018,028	59.28%	59.54%
182000	CLERK OF THE BOARD	343,890	241,034	70.09%	64.65%
190000	PLANT ACQUISITION	1,515,000	1,399,376	92.37%	45.83%
212000	COUNTY CLERK-RECORDER	849,603	579,165	68.17%	66.41%
214000	COUNTY CLERK-ELECTIONS	1,070,268	926,317	86.55%	48.01%
242000	COUNTY COUNSEL	1,688,615	1,122,860	66.50%	71.25%
270000	DISTRICT ATTORNEY	12,880,977	8,864,440	68.82%	67.41%
302100	DISASTER RESPONSE(GSD)	222,966	148,676	66.68%	56.84%
303100	COMMUNICATIONS-91 1	1,374,575	1,084,604	78.90%	77.31%
303200	COMMUNICATIONS-TECH RADIO SER	471,640	208,876	44.29%	56.58%
331000	GENERAL SERVICES	1,906,573	1,428,545	74.93%	62.12%
334000	GEN SVCS-CENTRAL PURCHASING	399,841	203,101	50.80%	71.05%
334200	GEN SVCS-CENTRAL STORES	(113,279)	(94,054)	83.03%	276.27%
350000	GRAND JURY	49,366	21,875	44.31%	31.97%
360000	HSA ADMINISTRATION	70,573,382	43,940,746	62.26%	64.87%
390000	HRA ADMINISTRATION	449,884	251,473	55.90%	45.37%
392100	SOCIAL SERVICES ADMINISTRATION	39,005,769	23,133,591	59.31%	64.87%
392200	CATEGORICAL AIDS	19,588,187	14,729,627	75.20%	57.27%
393000	VETERAN'S SERVICES OFFICER	269,117	161,777	60.11%	68.99%
394000	PUBLIC GUARDIAN	952,161	550,941	57.86%	58.21%
395000	COMMUNITY SERVICES	3,009,631	2,022,149	67.19%	68.58%
450000	COURTS	6,624,050	5,189,393	78.34%	62.30%
491000	PARKS	4,537,986	2,607,826	57.47%	59.30%
510000	P E R S O N N E L	1,929,656	1,209,160	62.66%	63.53%
540000	PLANNING	7,180,264	4,455,188	62.05%	71.00%
572000	JUVENILE HALL	2,622,579	1,601,067	61.05%	58.50%
574000	PROBATION	5,653,911	3,688,609	65.24%	62.54%
577000	PROBATION-CARE OF COURT WARDS	416,188	230,315	55.34%	63.18%
590000	PUBLIC DEFENDER	4,873,063	4,057,809	83.27%	77.75%
621900	DPW REAL PROPERTY	48,000	28,414	59.20%	75.62%
621901	DPW SURVEYOR	362,100	151,314	41.79%	67.32%
621902	DPW LIVE OAK PARKING	151,028	70,379	46.60%	54.74%
621903	DPW CONSTRUCTION INSPECTION	40,000	43,658	109.15%	37.41%
621904	DPW ENGIN DEVELOPMENT PLAN REVIEW	95,500	67,748	70.94%	74.55%
660000	SHERIFF	14,602,361	9,763,719	66.86%	70.38%
662000	DETENTION	12,957,224	8,317,002	64.19%	71.13%
730000	TREASURER-TAX COLLECTOR	1,455,007	796,136	54.72%	74.12%
		244,667,060	155,747,267	63.66%	64.54%

'Includes Final Budget Plus Prior Year Carryover of Appropriations and Mid Year Budget Revisions

COUNTY OF SANTA CRUZ
SALARY SAVINGS PROJECTION
FOR YEAR ENDED JUNE 30, 1999

DEPT	OVER/ UNDER	REVENUE OFFSET	NET
AGRICULTURAL COMMISSIONER	17,442		17,442
PEST CONTROL	39,642	39,642	
WEIGHTS & MEASURES	30,584		30,584
AGRICULTURAL EXTENSION	7,777		7,777
ASSESSOR	52,301		52,301
AUDITOR	(5,059)		(5,059)
BOARD OF SUPERVISORS	42,818		42,818
COMMISSION	13,117		13,117
COUNTY ADMINISTRATIVE OFFIC	25,523		25,523
CLERK OF THE BOARD	(9,467)		(9,467)
RECORDERS	(27,071)		(27,071)
ELECTIONS	(64,172)		(64,172)
COUNTY COUNSEL	51,531		51,531
CONSUMER AFFAIRS	5,189		5,189
FAMILY SUPPORT	239,635	239,635	
VICTIM WITNESS	74,016	74,016	
CRIMINAL PROSECUTION/OTHER	33,343		33,343
EMERGENCY SERVICES	66,008		66,008
GENERAL SERVICES	17,706		17,706
GRAND JURY	(38)		(38)
HEALTH SERVICES	1,329,207	996,905	332,302
SOCIAL SERVICES ADMINISTRATI	1,893,386	1,609,378	284,008
MULTI SENIOR SERVICES	32,391	32,391	
VETERAN'S SERVICES	13,231		13,231
PUBLIC GUARDIAN	37,562		37,562
COURTS			
PARKS	113,608	113,608	
PERSONNEL	132,067		132,067
PLANNING	292,752		292,752
JUVENILE HALL	35,858		35,858
PROBATION	(85,220)		(85,220)
PROBATION-GRANTS	50,463	50,462	1
PRETRIAL	99,574		99,574
SHERIFF-CORONER	(81,965)		(81,965)
DETENTION	342,336		342,336
COURT SECURITY	50,543	50,543	
TREASURER-TAX COLLECTORS	49,353		49,353
	<u>4,915,971</u>	<u>3,206,580</u>	<u>1,709,391</u>

COUNTY OF SANTA CRUZ
SALARY SAVINGS ANALYSIS
BASED UPON VACANT POSITIONS
FOR THE QUARTER ENDING
FOR MARCH 31, 1999

Adjusted Salary Savings Earned for Nine Months	\$ 3,235,677
Salary Savings Goal Required for Nine Months	<u>2,564,644</u>
Net Gain (Favorable Variance)	<u><u>\$ 671,033</u></u>

COUNTY OF SANTA CRUZ
SALARY SAVINGS ANALYSIS
FOR THE QUARTER ENDING
MARCH 31, 1999

ADJUSTED SALARY SAVINGS

DEPT TITLE	ACTUAL SALARY SAVINGS	LESS:		ASSOCIATED REVENUES	ADJUSTED SALARY SAVINGS TO DATE 3TH QTR	NINE MONTHS PROJECTED SALARY SAVINGS GOAL (UNFAVORABLE)	VARIANCE FAVORABLE (UNFAVORABLE)
		TERMINATION PAY OFFS	EXCESS OF EXTRA HELP & DIFFERENTIAL OVER BUDGET				
AGRICULTURAL COMMISSIONER & WTS & MEAS	47,262	4,389	9,908		32,965	16,537	16,428
AGRICULTURAL EXTENSION SERVICES	9,369	0	4,816		4,553		4,553
ASSESSOR	91,786	10,611	12,699		68,476	29,423	39,053
AUDITOR-CONTROLLER	35,298	13,654	5,847		15,797	24,055	(8,258)
BOARD OF SUPERVISORS	14,813	18,476	296		(3,959)		(3,959)
COMMISSIONS	18,519	0	9,734		8,785		8,785
COUNTY ADMINISTRATIVE OFFICE	95,576	0	21,154		74,422	19,282	55,140
COUNTY CLERK-RECORDER	18,216	24,327	51,540		(57,651)	15,284	(72,935)
COUNTY COUNSEL	71,355	6,481	1,602		63,272	25,996	37,276
DISTRICT ATTORNEY-ADMINISTRATION	40,209	10,492	35,457		(5,740)	97,119	(102,859)
DISTRICT ATTORNEY-CRIMINAL	185,483	83,375	27,191		74,917	103,239	(28,322)
EMERGENCY SERVICES	33,816	1,389	0		32,427	0	32,427
GENERAL SERVICES-ADMINISTRATION	1,327	9,683	4,037		(12,393)	12,518	(24,911)
GENERAL SERVICES-FACILITIES	111,245	1,631	56,485		53,129	44,127	9,002
GEN SVCS-CENTRAL PURCHASING	0	0	0		0	4,733	(4,733)
GEN SVCS-CENTRAL STORES	0	0	0		0	2,498	(2,498)
HSA ADMINISTRATION	1,624,629	93,070	73,634	358,642	1,099,284	979,737	119,547
SOCIAL SERVICES ADMINISTRATION	1,871,251	38,275	38,250	1,031,225	763,501	581,521	181,981
VETERAN'S SERVICES OFFICER	4,374	0	0		4,374	5,695	(1,321)
PUBLIC GUARDIAN	23,225	1,386	0		21,839	17,381	4,458
PARKS	58,898	320	11,211		47,367	43,031	4,336
PERSONNEL	116,012	37,833	15,415		62,764	20,285	42,479
PLANNING	345,728	7,978	26,737		311,013	138,174	172,839
JUVENILE HALL	40,745	24,031	2,539		14,175	23,213	(9,038)
PROBATION	98,921	5,329	9,037		84,555	82,293	2,262
SHERIFF	309,188	28,474	77,484		205,230	266,121	(60,891)
DETENTION	319,886	4,261	86,252		229,373		229,373
TREASURER-TAX COLLECTOR	67,347	0	24,145		43,202	12,383	30,819
	5,654,479	423,465	605,470	1,389,866	3,235,677	2,564,644	671,033

COUNTY OF SANTA CRUZ
EXTRA HELP PAY
FOR THE QUARTER ENDING MARCH 31, 1999

	BUDGET	ACTUAL	VARIANCE FAVORABLE (UNFAVORABLE)
AGRICULTURAL COMMISSION & WTS & MEA	6,000	15,908	(9,908)
AGRICULTURAL EXTENSION SERVICES	0	4,816	(4,816)
ASSESSOR	21,140	33,839	(12,699)
AUDITOR-CONTROLLER	0	3,536	(3,536)
GENERAL FUND PERSONNEL POOL	0	1,590	(1,590)
BOARD OF SUPERVISORS	32,078	32,170	(92)
COMMISSIONS	0	9,651	(9,651)
COUNTY ADMINISTRATIVE OFFICE	0	10,001	(10,001)
CLERK OF THE BOARD	1,400	0	1,400
RECORDER	0	5,270	(5,270)
ELECTIONS	77,937	124,207	(46,270)
COUNTY COUNSEL	4,627	4,659	(32)
DISTRICT ATTORNEY-CRIMINAL	85,076	69,906	15,170
DISTRICT ATTORNEY-OTHER	20,506	20,968	(462)
GENERAL SERVICES-ADMINISTRATION	0	3,169	(3,169)
GENERAL SERVICES-FACILITIES MANAGEMEN	0	56,485	(56,485)
GRAND JURY	0	35	(35)
HEALTH SERVICES AGENCY	438,816	416,875	21,941
HUMAN RESOURCES AGENCY	61,139	99,389	(38,250)
PARKS, OPEN SPACE, & CULTURAL SERVICES	517,585	375,619	141,966
PERSONNEL	32,585	47,426	(14,841)
PLANNING	10,756	33,776	(23,020)
JUVENILE HALL	161,630	132,726	28,904
PROBATION	1,800	10,837	(9,037)
PUBLIC WORKS-SURVEYOR	0	177	(177)
PUBLIC WOKS-PARKING	0	8,499	(8,499)
PUBLIC WORKS-ENGIN DEVELOP PLAN REVIEW	0	84	(84)
SHERIFF	43,550	3 1,821	11,729
SHERIFF-DETENTION	85,151	83,667	1,484
TREASURER-TAX COLLECTOR	921	25,066	(24,145)
	1,602,697	1,662,172	(59,475)

COUNTY OF SANTA CRUZ
OVERTIME PAY
FOR THE QUARTER ENDING MARCH 31, 1999

	BUDGET	ACTUAL	VARIANCE FAVORABLE (UNFAVORABLE)
AGRICULTURAL COMMISSION & WTS & MEAS	3,500	1,985	1,515
AUDITOR-CONTROLLER	4,180	4,901	(72 1)
BOARD OF SUPERVISORS	0	204	(204)
COMMISSIONS	0	83	(83)
COUNTY ADMINISTRATIVE OFFICE	1,000	12,153	(11,153)
CLERK OF THE BOARD	336	0	336
RECORDER	4,187	4,300	187
ELECTIONS	14,957	14,030	927
COUNTY COUNSEL	0	1,570	(1,570)
DISTRICT ATTORNEY-CRIMINAL	90,034	125,491	(35,457)
DISTRICT ATTORNEY-OTHER	25,462	52,191	(26,729)
EMERGENCY SERVICES	1,680	510	1,170
GENERAL SERVICES-ADMINISTRATION	1,000	1,868	(868)
GENERAL SERVICES-FACILITIES MANAGEMEN	10,864	9,758	1,106
GENERAL SERVICES-CENTRAL PURCHASING	2,000	1,570	430
HEALTH SERVICES AGENCY	233,375	307,009	(73,634)
HUMAN RESOURCES AGENCY	156,076	147,245	8,831
PARKS, OPEN SPACE, & CULTURAL SERVICES	15,516	26,727	(11,211)
PERSONNEL	0	574	(574)
PLANNING	0	3,717	(3,717)
JUVENILE HALL	21,000	23,539	(2,539)
PROBATION	15,860	6,713	9,117
PUBLIC WORKS-ENGIN DEVELOP PLAN REVIEW	0	56	(56)
SHERIFF-REGULAR	422,603	500,087	(77,481)
DETENTION-REGULAR	262,981	349,236	(86,252)
DETENTION-MANDATORY*	289,143	141,732	147,411
TREASURER-TAX COLLECTOR	4,595	4,575	20
	<u>1,580,652</u>	<u>1,741,854</u>	<u>(161,202)</u>

*Scheduled work hours total 84 hours in a two week period. Per MOU the extra 4 hours are designated as mandatory overtime.

191

COUNTY OF SANTA CRUZ
 SALARY SAVINGS BY DEPARTMENT-DETAIL
 FOR THE QUARTER ENDING
 MARCH 31.1999

DEPT	DIV	SEC	POSITION	CO	DESCRIPTION	ACTUAL EQUIV			CALC AUTH					
						PPDS VACANT	PPDS VACANT	SAVINGS	STEP	HRS	VACATE	FILLED	STEP	UNFUNDED
3	20	0	BJ5001	AA	SECRETARY	8	8	13,299.04	7	40		981212	7	0.00
3	20	0	TC1001	XA	AG BIOLOGIST AIDE	17	8.5	10,577.74	1	20			1	0.00
3	20	0	TG7001	AB	AG/WGTS & MEAS INS III	2	2	3,696.62	5	40		980822	1	0.00
3	30	0	TG7007	AB	AG/WGTS & MEAS INS III	4	4	8,195.60	7	40		981109	7	0.00
3	30	0	TG7010	AB	AG/WGTS & MEAS INS III	7	7	11,492.95	2	40		981031	1	0.00
DEPT 3 TOTALS								<u>47,261.95</u>						<u>0.00</u>
<hr/>														
6	0	0	BA6001	AA	CLERK II	8	8	9,369.36	1	40		981114	1	0.00
DEPT 6 TOTALS								<u>9,369.36</u>						<u>0.00</u>
<hr/>														
9	0	0	BL3004	AC	ASSESSMENT CLERK	7	7	8,636.60	1	40		981222	1	0.00
9	0	0	BL5001	AU	ASSESSMENT TECHNICIAN	17	0	0.00	1	40	951021		1	19,444.09
9	0	0	BL7001	AA	ASSMT ROLL SUPERVISOR	2	2	3,340.44	7	40		980822	7	0.00
9	0	0	CV5004	AC	GEO INFO SYS TECH II	17	17	26,713.46	1	40	980414		7	0.00
9	0	0	DA2004	AA	APPRAISER/AUDITR AIDE	15	15	25,288.05	7	40	980822		7	0.00
9	0	0	DA7002	AA	APPRAISER II	14	14	27,807.92	5	40		990212	5	0.00
DEPT 9 TOTALS								<u>91,786.47</u>						<u>19,444.09</u>
<hr/>														
12	0	0	BB1001	XA	PAYROLL CLERK	3	1.5	2,060.37	1	20		981226	1	0.00
12	0	0	CH7003	AA	ACCOUNTING TECHNICIAN	2	2	3,498.96	7	40		990201	1	0.00
12	0	0	CH7007	AA	ACCOUNTING TECHNICIAN	2	2	2,943.16	2	40		091226	7	0.00
12	0	0	UB4002	AB	ACCOUNTANT II	7	7	11,924.43	1	40		981031	7	0.00
12	0	0	UF6001	AB	AUDITOR IV	3	3	7,781.82	5	40		990206	5	0.00
12	0	0	UF6004	AB	AUDITOR IV	3	3	7,089.06	1	40		990123	1	0.00
DEPT 12 TOTALS								<u>35,297.80</u>						<u>0.00</u>
<hr/>														
15	0	0	UY3003	AE	COUNTY SVRS ADMIN ASST	9	9	14,813.19	2	40		981226	1	0.00
DEPT 15 TOTALS								<u>14,813.19</u>						<u>0.00</u>

146

DEPT	DIV	SEC	POSITION	CO	DESCRIPTION	ACTUAL EQUIV			CALC AUTH			STEP	UNFUNDED	
						PPDS	PPDS	SAVINGS	STEP	HRS	VACATE			FILLED
16	20	0	UY6004	XA	COMMISSIONS COORD.	17	8.5	<u>18,519.29</u>	6	20	980503	1	<u>0.00</u>	
DEPT 16 TOTALS								<u>18,519.29</u>					<u>0.00</u>	
18	10	0	UR7003	AB	SR ADMIN ANALYST	5	5	<u>15,632.20</u>	7	40	990222	1	0.00	
18	10	0	UR7005	XB	SR ADMIN ANALYST	17	8.5	<u>23,372.79</u>	6	20	930605	1	0.00	
18	10	0	UT5021	AU	DEPUTY CAO	17	0	0.00	1	40	951007	1	58,855.87	
18	10	0	UT5022	AB	DEPUTY CAO	7	7	<u>28,002.10</u>	5	40	990123	990126	5	0.00
18	10	0	UT5023	AB	DEPUTY CAO	7	7	<u>24,234.77</u>	1	40	990220	990220	1	0.00
18	10	0	UT7001	AE	ASST COUNTY ADMIN OFF	1	1	<u>4,334.02</u>	1	40	990123	990123	1	0.00
DEPT 18 TOTALS								<u>95,575.88</u>					<u>58,855.87</u>	
21	20	0	cc2001	AA	IMAGING TECHNICIAN	5	5	<u>8,077.10</u>	7	40	990109	990109	1	0.00
21	40	0	xc5001	AA	DEPTL INFO SYS ANALYST	3	3	<u>5,092.83</u>	1	40	981212	981212	4	0.00
21	40	0	ZZ9001	AA	TO BE CLASSIFIED	7	7	<u>5,046.44</u>	1	40	NO HIS	NO HIS	4	0.00
DEPT 21 TOTALS								<u>18,216.37</u>					<u>0.00</u>	
24	0	0	BH3005	AA	LEGAL SECRETARY II	3	3	<u>5,048.82</u>	7	40	990206	990206	4	0.00
24	0	0	BH5002	AA	SR LEGAL SECRETARY	14	14	<u>24,862.46</u>	7	40	990206	990206	7	0.00
24	0	0	JD7007	AA	ATTY IV-CO COUNSEL	1	1	<u>4,081.32</u>	7	40	980810	980810	7	0.00
24	0	0	JD7009	AA	ATTY IV-CO COUNSEL	15	15	<u>37,362.45</u>	1	40	981031	981031	7	0.00
DEPT 24 TOTALS								<u>71,355.05</u>					<u>0.00</u>	
27	10	20	JC2001	AU	PARALEGAL	17	0	0.00	1	40	970628	970628	7	24,351.31
27	10	40	BY4005	AC	VICTIM SERVICES REP	10	10	<u>15,890.00</u>	7	40	981031	981031	7	0.00
27	10	40	BY4007	AC	VICTIM SERVICES REP	11	11	<u>15,541.35</u>	4	40	981017	981017	7	0.00
27	10	40	UU2001	AC	VIC/WIT ASST PROG MGR	2	2	<u>4,694.22</u>	7	40	981017	981017	1	0.00
27	10	40	229003	XC	TO BE CLASSIFIED	3	1.5	<u>1,242.63</u>	1	20			1	0.00
27	10	50	NV6005	XC	INVESTIGATOR ASST	4	2	<u>2,841.12</u>	1	20	980930	980930	3	0.00
DEPT 27 10 TOTALS								<u>40,209.32</u>					<u>24,351.31</u>	
17	20	10	BH3016	AA	LEGAL SECRETARY II	1	1	<u>1,682.94</u>	7	40	990306	990306	3	0.00

-10-

19

147

DEPT	DIV	SEC	POSITION	CO	DESCRIPTION	ACTUAL EQUIV		SAVINGS	CALC AUTH			STEP	UNFUNDED	
						PPDS VACANT	PPDS VACANT		STEP	HRS	VACATE			FILLED
27	20	10	BH3021	AA	LEGAL SECRETARY II	3	3	4,215.12	1	40	990206	3	0.00	
27	20	10	BH3023	AA	LEGAL SECRETARY II	6	6	8,430.24	3	40	990226	3	0.00	
27	20	10	BH5005	AA	SR LEGAL SECRETARY	16	16	28,414.24	7	40		990306	7	0.00
27	20	10	CH8003	AA	SR ACCOUNTING TECH	1	1	1,622.27	2	40		990206	7	0.00
27	20	10	JD8014	AA	ATTY IV-DA	2	2	6,150.62	1	40	990210		7	0.00
27	20	IO	JD8038	XC	ATTY IV-DA	17	8.5	27,143.90	1	20			7	0.00
27	20	10	JD8039	AC	ATTY IV-DA	2	2	6,150.62	1	40	981031	981031	1	0.00
27	20	10	JH7002	AE	CHF DEP DIST ATTY	1	1	4,770.94	7	40	990305		1	0.00
27	20	10	JH7018	AE	CHF DEP DIST ATTY	3	3	13,959.84	7	40		990220	6	0.00
27	20	10	JH9001	AL	DIST ATTORNEY	3	3	16,657.41	5	40		990212	1	0.00
27	20	10	RH7015	AD	DA INSPECTOR II ++	2	2	4,029.28	1	40		980822	3	0.00
27	20	10	RH7016	AB	DA INSPECTOR II ++	8	8	16,117.12	1	40		981118	7	0.00
27	20	10	RH7017	AB	DA INSPECTOR II ++	4	4	8,058.56	1	40			7	0.00
27	20	10	UR1001	AA	ADMIN AIDE	1	1	1,588.02	4	40		990220	7	0.00
27	20	10	UW5001	AA	ADMIN SVCS OFF II	3	3	8,074.32	7	40	990129		7	0.00
27	20	10	XC5001	AA	DEPTL INFO SYS ANALYST	4	4	6,790.44	1	40			7	0.00
27	20	10	ZZ9001	AA	TO BE CLASSIFIED	12	12	8,651.04	1	40	NO HIS		7	0.00
27	20	10	229002	AA	TO BE CLASSIFIED	12	12	8,651.04	1	40	NO HIS		7	0.00
27	20	10	229003	AA	TO BE CLASSIFIED	6	6	4,325.52	1	40	NO HIS		7	0.00
DEPT 27 20 TOTALS													<u>185,483.48</u>	<u>0.00</u>
DEPT 27 TOTALS													<u>225,692.80</u>	<u>24,351.31</u>
30	30	0	MY5001	AB	COMM TECHNICIAN II	4	4	7,091.84	1	40	990115		7	0.00
30	30	0	MY5003	AB	COMM TECHNICIAN II	14	14	24,821.44	1	40	NO HIS		7	0.00
30	30	0	MY6002	AA	SR COMM TECHNICIAN	1	1	1,903.11	1	40		990226	3	0.00
DEPT 30 TOTALS													<u>33,816.39</u>	<u>0.00</u>
33	10	0	CH5002	AA	SR ACCOUNT CLERK	1	1	1,326.75	3	40		981128	7	0.00
DEPT 30 10 TOTALS													<u>1,326.75</u>	<u>0.00</u>
33	30	0	BW4001	AA	PARKING ATTENDANT	3	3	3,572.19	3	40	990201		7	0.00
33	30	0	FD2006	AA	CUSTODIAN	2	2	2,483.22	4	40	990301		7	0.00

DEPT	DIV	SEC	POSITION	CO	DESCRIPTION	ACTUAL EQUIV			CALC AUTH						
						PPDS VACANT	PPDS VACANT	SAVINGS	STEP	HRS	VACATE	FILLED	STEP	UNFUNDED	
33	30	0	FD2009	AA	CUSTODIAN	11	11	13,657.71	4	40		981226	1	0.00	
33	30	0	FD2014	AA	CUSTODIAN	1	1	1,368.83	7	40		981114	1	0.00	
33	30	0	FD2016	AA	CUSTODIAN	8	8	9,752.88	4	40		981114	1	0.00	
33	30	0	FD2017	AA	CUSTODIAN	17	17	20,724.87	4	40	971125		1	0.00	
33	30	0	FD2021	AA	CUSTODIAN	11	11	13,216.61	3	40		981226	1	0.00	
33	30	0	FD4002	AA	CUSTODIAN LEADWORKER	9	9	10,584.54	1	40		981130	3	0.00	
33	30	0	FD5001	AA	MAINT CUSTODIAN	2	2	3,025.36	7	40		980903	1	0.00	
33	30	0	MG3001	AA	MAINT ELECTRO/MECH WKR	3	3	5,101.65	2	40	990202		1	0.00	
33	30	0	MH3003	AA	BLDG EQUIP MECHANIC	12	12	25,103.64	7	40		990110	7	0.00	
DEPT 33 30 TOTALS														<u>0.00</u>	
DEPT 33 TOTALS										<u>111,245.00</u>					<u>0.00</u>
DEPT 33 TOTALS										<u>112,571.75</u>					<u>0.00</u>

36	1	0	BA6012	AA	CLERK II	1	1	1,413.84	7	40		990109	7	0.00
36	1	0	883002	AA	PERSONNEL PAYROLL CLK	2	2	2,980.34	5	40		990306	2	0.00
36	1	0	BC7011	NA	TYPIST CLERK III	1	0.7	1,092.79	7	28		981007	7	0.00
36	1	0	CH5002	AA	SR ACCOUNT CLERK	8	8	11,999.60	7	40		981114	4	0.00
36	1	0	CH7001	AA	ACCOUNTING TECHNICIAN	3	3	4,300.23	1	40		981128	2	0.00
36	1	0	UB4003	AB	ACCOUNTANT II	6	6	10,966.50	4	40		981017	1	0.00
36	1	0	UD5001	AA	ASST CHF FISCL SVC-HSA	1	1	2,331.68	1	40	990305		1	0.00
36	1	0	UN1001	AA	VAX SYS SOFT ANALYST	4	4	9,510.76	7	40		980921	5	0.00
36	1	0	UN6001	AA	SR DP PROG ANALYST	17	17	41,502.10	5	40	971227		5	0.00
36	1	0	xc5005	AA	DEPTL INFO SYS ANALYST	15	15	26,022.00	2	40	980813		5	0.00
36	1	0	XC5006	AA	DEPTL INFO SYS ANALYST	14	14	23,766.54	1	40		990206	1	0.00
36	10	0	BA6009	AA	CLERK II	3	3	3,451.83	1	40		990201	1	0.00
36	10	0	CH3002	AA	ACCOUNT CLERK	4	4	5,119.16	3	40		990220	5	0.00
36	10	0	CH3009	AA	ACCOUNT CLERK	5	5	5,963.45	1	40	981228		5	0.00
36	10	0	CH3011	AA	ACCOUNT CLERK	17	17	20,641.74	1	40			5	0.00
36	10	0	NA3001	XA	LAB ASST/PHLEBOTOMIST	4	2	2,915.52	4	20		980930	7	0.00
36	10	0	NJ1002	XA	PHARMACY TECHNICIAN	4	2	2,704.12	2	20		981116	2	0.00
36	10	0	NJ1005	XA	PHARMACY TECHNICIAN	9	4.5	5,983.02	2	20	981114		2	0.00
36	10	0	NJ1006	AA	PHARMACY TECHNICIAN	8	8	9,713.76	1	40		981114	2	0.00
36	10	0	NJ1008	AA	PHARMACY TECHNICIAN	6	6	7,285.32	1	40		981017	2	0.00
36	10	0	NJ5004	AA	PHARMACIST	2	2	5,618.46	1	40		980904	7	0.00
36	10	0	NJ5005	XA	PHARMACIST	8	4	11,670.80	1	20			7	0.00

-12-

191

149

DEPT	DIV	SEC	POSITION	CO	DESCRIPTION	ACTUAL EQUIV			CALC AUTH				STEP	UNFUNDED
						PPDS	PPDS	SAVINGS	STEP	HRS	VACATE	FILLED		
36	10	0	NU7001	AA	SR P H NUTRITIONIST	3	3	6,607.59	7	40	990205		7	0.00
36	10	0	NW5005	AA	COMMUNITY HLTH WKR II	2	2	2,702.42	4	40		980815	4	0.00
36	10	0	NW5015	XA	COMMUNITY HLTH WKR II	5	2.5	3,370.40	2	20	981231		4	0.00
36	10	0	NW5017	XA	COMMUNITY HLTH WKR II	19	9.5	12,445.00	1	20	981012		4	0.00
36	10	0	PD5004	LA	DETENTION REG NURSE	3	2.25	5,420.16	6	30		980914	5	0.00
36	10	0	PD5006	AA	DETENTION REG NURSE	7	7	16,232.86	1	40		990109	1	0.00
36	10	0	PD5014	AA	DETENTION REG NURSE	7	7	17,342.50	7	40	981201		1	0.00
36	10	0	PD5015	LA	DETENTION REG NURSE	3	2.25	5,420.16	6	30		981226	5	0.00
36	10	0	PD5017	LA	DETENTION REG NURSE	2	1.5	3,547.40	6	30		980822	5	0.00
36	10	0	PD5022	XA	DETENTION REG NURSE	17	8.5	20,633.41	1	20			5	0.00
36	10	0	PD5023	VA	DETENTION REG NURSE	17	9.35	22,512.25	1	22			5	0.00
36	10	0	PD8001	AA	DET NURS ASST PROG MGR	1	1	2,950.90	7	40	990228		5	0.00
36	10	0	PD9001	AA	DETEN NURSE-PROG MGR	17	17	53,067.54	7	40	970725		5	0.00
36	10	0	PG5003	AA	CLINIC NURSE II	4	4	9,530.32	7	40		980921	1	0.00
36	10	0	PH5011	AA	PUB HLTH NURSE II	13	13	28,760.16	1	40	NO HIS		1	0.00
36	10	0	PH8003	AA	PUB HLTH NURSE III	14	14	33,150.74	1	40	NO HIS		1	0.00
36	10	0	PJ3006	XA	PHYS ASST/NURSE PRACT	16	8	20,327.84	3	20		990306	1	0.00
36	10	0	PJ3010	XA	PHYS ASST/NURSE PRACT	5	2.5	7,492.40	5	20		981021	4	0.00
36	10	0	PT3008	LA	CLINIC PHYSICIAN-HSA	1	0.75	3,364.78	1	30	990306		4	0.00
36	10	0	PT3011	XA	CLINIC PHYSICIAN-HSA	17	8.5	38,748.95	1	20	980711		4	0.00
36	10	0	UU5001	AA	DEPTL DP COORDINATOR	2	2	3,637.90	6	40		980822	1	0.00
36	10	0	UU7001	AA	DEPTL SYSTEMS ANALYST	17	17	30,915.52	1	40			1	0.00
36	10	0	ZZ9001	AA	TO BE CLASSIFIED	17	17	12,255.64	1	40			1	0.00
36	10	0	ZZ9013	AA	TO BE CLASSIFIED	2	2	1,441.84	1	40			1	0.00
36	10	0	229014	AA	TO BE CLASSIFIED	2	2	1,441.84	1	40			1	0.00
36	20	0	BC5005	XA	TYPIST CLERK II	3	1.5	2,124.96	5	20		981023	1	0.00
36	20	0	BC5010	TA	TYPIST CLERK II	3	1.8	2,484.87	5	24		981221	1	0.00
36	20	0	BC5011	AA	TYPIST CLERK II	3	3	3,924.51	5	40		981128	6	0.00
36	20	0	BC7009	AA	TYPIST CLERK III	3	3	4,215.12	5	40		990206	7	0.00
36	20	0	CH5003	AA	SR ACCOUNT CLERK	1	1	1,555.73	7	40	990306		7	0.00
36	20	0	NH1001	XA	EPIDEMIOLOGIST	12	6	17,160.00	7	20		990109	7	0.00
36	20	0	NV5002	XA	PUB HLTH INVESTIGATOR	4	2	3,107.28	3	20	990123		7	0.00
36	20	0	NX5012	XC	HEALTH PROGRAM SPEC	17	8.5	13,355.71	1	20			7	0.00
36	20	0	PD5020	LA	DETENTION REG NURSE	12	9	22,209.12	7	30		990109	5	0.00
36	20	0	PH5013	XA	PUB HLTH NURSE II	2	1	1,955.80	5	20		980822	7	0.00
36	20	0	PH5018	AA	PUB HLTH NURSE II	7	7	17,965.85	7	40		981031	7	0.00
36	20	0	PH5034	JA	PUB HLTH NURSE II	5	4	10,570.40	7	32	990109		7	0.00

DEPT	DIV	SEC	POSITION	CO	DESCRIPTION	ACTUAL EQUIV		SAVINGS	CALC AUTH			STEP	UNFUNDED
						PPDS VACANT	PPDS VACANT		STEP	HRS	VACATE		
36	20	0	PH5038	AA	PUB HLTH NURSE II	3	3	6,636.96	1	40	981005	1	0.00
36	20	0	PH5039	LA	PUB HLTH NURSE II	17	12.75	33,184.68	7	30	970906	1	0.00
36	20	0	PP5004	AA	THERAPIST-PHYS HANDICA	1	1	2,268.09	1	40	980808	7	0.00
36	20	0	PP5005	XA	THERAPIST-PHYS HANDICA	16	8	21,126.24	7	20	980808	7	0.00
36	20	0	PP5006	AA	THERAPIST-PHYS HANDICA	2	2	4,741.68	7	40	980831	5	0.00
36	20	0	PP5008	XA	THERAPIST-PHYS HANDICA	1	0.5	1,209.33	7	20	980808	7	0.00
36	20	0	PP5010	XA	THERAPIST-PHYS HANDICA	5	2.5	5,941.45	1	20	981006	7	0.00
36	20	0	SK5003	XA	SR MH CLIENT SPECIALST	17	8.5	16,707.60	1	20		7	0.00
36	20	0	TJ1002	AA	ENVIRON HEALTH AIDE	2	2	2,493.02	1	40	980831	1	0.00
36	20	0	TJ1003	AC	ENVIRON HEALTH AIDE	12	12	14,958.12	1	40	990119	1	0.00
36	20	0	TJ1004	x c	ENVIRON HEALTH AIDE	4	2	2,709.96	1	20	990305	1	0.00
36	20	0	TJ7007	AA	ENVIRON HLTH SPEC	1	1	1,851.24	3	40	980808	1	0.00
36	20	0	TR7001	AA	HOUS REHAB/CONST SPEC	2	2	3,673.12	1	40	981212	7	0.00
36	20	0	US3006	AC	DEPTL ADMIN ANALYST	3	3	5,791.32	1	40		7	0.00
36	20	0	UU3005	XA	PROGRAM COORDINATOR	2	1	1,692.58	1	20	990123	1	0.00
36	20	0	229006	AA	TO BE CLASSIFIED	4	4	2,883.68	1	40		1	0.00
36	20	0	229007	AA	TO BE CLASSIFIED	4	4	2,883.68	1	40		1	0.00
36	20	0	229008	LA	TO BE CLASSIFIED	4	3	2,270.24	1	30		1	0.00
36	20	0	229009	XA	TO BE CLASSIFIED	4	2	1,656.84	1	20		1	0.00
36	20	0	ZZ9010	AC	TO BE CLASSIFIED	1	1	720.92	1	40	NO HIS	1	0.00
36	30	0	BA6001	AA	CLERK II	13	13	16,179.15	4	40	980919	1	0.00
36	30	0	BA6002	XA	CLERK II	17	8.5	10,985.06	3	20	980627	1	0.00
36	30	0	BA8002	AA	CLERK III	3	3	3,839.37	2	40	990206	1	0.00
36	30	0	BC5003	LA	TYPIST CLERK II	7	5.25	6,944.63	4	30	990220	1	0.00
36	30	0	BT4007	AA	TYPIST CLERK-MH	3	3	3,680.85	1	40	NO HIS	1	0.00
36	30	0	BT4010	AA	TYPIST CLERK-MH	1	1	1,183.88	1	40	980808	3	0.00
36	30	0	BT4014	AC	TYPIST CLERK-MH	5	5	6,335.30	5	40	981003	7	0.00
36	30	0	CH5001	AA	SR ACCOUNT CLERK	6	6	8,348.04	5	40	981226	7	0.00
36	30	0	NL1001	AA	MH PROGRAM MANAGER	2	2	4,873.62	7	40	980831	7	0.00
36	30	0	NM3003	AA	COMM MENTAL HLTH AIDE	4	4	5,213.04	4	40	980919	5	0.00
36	30	0	NM3007	XA	COMM MENTAL HLTH AIDE	7	3.5	5,191.13	5	20	981212	5	0.00
36	30	0	NM3010	AA	COMM MENTAL HLTH AIDE	11	11	13,636.26	2	40	981017	5	0.00
36	30	0	NM3011	XA	COMM MENTAL HLTH AIDE	17	8.5	11,850.19	3	20	980725	5	0.00
36	30	0	NM3013	XA	COMM MENTAL HLTH AIDE	4	2	2,663.04	1	20	981003	3	0.00
36	30	0	PJ6002	AA	HEALTH SERVICES MGR	17	17	38,818.82	1	40		3	0.00
36	30	0	PR5001	AA	PSYCHIATRIST	15	15	81,387.15	7	40	980821	3	0.00
36	30	0	PR5002	AA	PSYCHIATRIST	7	7	38,727.29	7	40	990211	3	0.00

-14-

19

151

DEPT	DIV	SEC	POSITION	CO	DESCRIPTION	ACTUAL EQUIV		SAVINGS	CALC AUTH			STEP	UNFUNDED
						PPDS VACANT	PPDS VACANT		STEP	HRS	VACATE		
36	30	0	PR5005	TA	PSYCHIATRIST	7	4.2	21,415.38	1	24	NO HIS	3	0.00
36	30	0	PR5009	AA	PSYCHIATRIST	8	8	43,406.48	7	40	981125	3	0.00
36	30	0	SC4002	AA	MH FEE CLERK	15	15	25,082.55	7	40	980822	3	0.00
36	30	0	SK5001	AA	SR MH CLIENT SPECIALST	3	3	5,571.33	1	40	980918	1	0.00
36	30	0	SK5003	XA	SR MH CLIENT SPECIALST	5	2.5	4,914.00	1	20	NO HIS	1	0.00
36	30	0	SK5006	LA	SR MH CLIENT SPECIALST	9	6.75	14,146.92	4	30	981113	1	0.00
36	30	0	SK5010	AA	SR MH CLIENT SPECIALST	8	8	17,949.04	6	40	981226	7	0.00
36	30	0	SK5022	AA	SR MH CLIENT SPECIALST	6	6	11,142.66	1	40	981017	1	0.00
36	30	0	SK5023	AA	SR MH CLIENT SPECIALST	10	10	23,502.90	7	40	981031	1	0.00
36	30	0	SK5026	TA	SR MH CLIENT SPECIALST	13	7.8	18,064.54	6	24	980919	1	0.00
36	30	0	SK5028	LA	SR MH CLIENT SPECIALST	17	0	0.00	1	30	980203	1	24,139.15
36	30	0	SK5032	AA	SR MH CLIENT SPECIALST	9	9	16,713.99	1	40	981112	1	0.00
36	30	0	SK5034	AA	SR MH CLIENT SPECIALST	4	4	7,428.44	1	40	981208	1	0.00
36	30	0	SK5037	AA	SR MH CLIENT SPECIALST	2	2	4,700.58	7	40	980902	1	0.00
36	30	0	SK5038	AA	SR MH CLIENT SPECIALST	12	12	22,285.32	1	40	990109	1	0.00
36	30	0	SK5039	AA	SR MH CLIENT SPECIALST	10	10	18,571.10	1	40	NO HIS	1	0.00
36	30	0	SK5040	AA	SR MH CLIENT SPECIALST	6	6	11,142.66	1	40	981130	1	0.00
36	30	0	SK5042	LA	SR MH CLIENT SPECIALST	1	0.75	1,347.30	4	30	980919	6	0.00
36	30	0	SK5053	AA	SR MH CLIENT SPECIALST	3	3	5,571.33	1	40	980905	5	0.00
36	30	0	SK5056	AA	SR MH CLIENT SPECIALST	6	6	13,837.56	7	40	981017	1	0.00
36	30	0	SK5064	AC	SR MH CLIENT SPECIALST	6	6	11,142.66	1	40	990115	1	0.00
36	30	0	SK5066	AC	SR MH CLIENT SPECIALST	3	3	5,571.33	1	40	980905	7	0.00
36	30	0	SK5069	XA	SR MH CLIENT SPECIALST	17	0	0.00	1	20	980106	7	16,707.60
36	30	0	SK5077	AC	SR MH CLIENT SPECIALST	12	0	0.00	1	40	990111	1	22,285.32
36	30	0	SK5079	AA	SR MH CLIENT SPECIALST	8	8	16,477.44	4	40	981201	1	0.00
36	30	0	SK5084	AA	SR MH CLIENT SPECIALST	1	1	1,857.11	1	40	NO HIS	1	0.00
36	30	0	SK5085	XA	SR MH CLIENT SPECIALST	3	1.5	2,948.40	1	20	980924	1	0.00
36	30	0	SK7003	XA	MH UTILIZ REVIEW SPEC	7	3.5	9,126.32	5	20	981101	5	0.00
36	30	0	SK8004	AA	MH SUPVG CLIENT SPEC	4	4	10,955.08	7	40	981031	7	0.00
36	30	0	SL5003	AA	M H COUNSELOR II	4	4	7,463.68	7	40	981212	1	0.00
36	30	0	SL5007	AA	M H COUNSELOR II	2	2	3,035.12	1	40	990123	1	0.00
36	30	0	SL7001	AA	SR M H COUNSELOR	8	8	15,968.48	7	40	981211	1	0 . 0 0
36	30	0	us5001	AA	SR DEPTL ADMIN ANALYST	17	0	0.00	7	40	980407	1	45,918.53
36	30	0	xc5001	XA	DEPTL INFO SYS ANALYST	17	0	0.00	1	20		1	15,351.85
36	30	0	ZZ9011	AC	TO BE CLASSIFIED	4	4	2,883.68	1	40		1	0.00
36	30	0	ZZ9013	AA	TO BE CLASSIFIED	2	2	1,441.84	1	40		1	0.00
36	30	0	ZZ9014	AA	TO BE CLASSIFIED	2	2	1,441.84	1	40		1	0.00

-15-

-16-

DEPT	DIV	SEC	POSITION	CO	DESCRIPTION	ACTUAL EQUIV		SAVINGS	CALC AUTH			STEP	UNFUNDED
						PPDS	PPDS		VACANT	HRS	VACATE		
36	30	0	ZZ9015	AA	TO BE CLASSIFIED	2	2	1,441.84	1	40		1	0.00
36	30	0	ZZ9016	AA	TO BE CLASSIFIED	2	2	1,441.84	1	40		1	0.00
36	40	0	BC7001	JA	TYPIST CLERK III	7	5.6	7,252.91	1	32	NO HIS	1	0.00
36	40	0	BD3001	AA	CLERICAL SUPVR I	2	2	2,886.40	1	40	990206	1	0.00
36	40	0	NX5001	AA	HEALTH PROGRAM SPEC	1	1	1,462.77	1	40	NO HIS	1	0.00
36	40	0	NX5002	AA	HEALTH PROGRAM SPEC	9	9	14,098.41	4	40	981113	1	0.00
36	40	0	NX5014	AA	HEALTH PROGRAM SPEC	1	1	1,462.77	1	40	980905	1	0.00
36	40	0	SK5001	AC	SR MH CLIENT SPECIALST	10	10	18,571.10	1	40	981218	1	0.00
36	40	0	us5001	AA	SR DEPTL ADMIN ANALYST	4	4	10,804.36	7	40	990121	1	0.00
36	40	0	UU3004	AA	PROGRAM COORDINATOR	9	9	14,256.90	1	40		1	0.00
36	40	0	229004	AA	TO BE CLASSIFIED	1	1	720.92	1	40	NO HIS	1	0.00
36	40	0	ZZ9005	AA	TO BE CLASSIFIED	5	5	3,604.60	1	40	NO HIS	1	0.00
36	40	0	ZZ9012	AA	TO BE CLASSIFIED	4	4	2,883.68	1	40		1	0.00
36	50	0	BC5001	AA	TYPIST CLERK II	2	2	2,113.36	3	40	980822	7	0.00
36	50	0	BC5004	AA	TYPIST CLERK II	1.1	11	15,250.84	7	40	990104	1	0.00
36	50	0	BC7002	AA	TYPIST CLERK III	1	1	1,514.63	7	40	980822	7	0.00
36	50	0	CH3002	XA	ACCOUNT CLERK	17	8.5	10,635.88	1	20	970120	7	0.00
36	50	0	SC8003	AA	MED CARE ELIG WORKER	1	1	1,754.37	7	40	981207	7	0.00
36	50	0	UV5001	AA	EMERG MEDICAL SVS MGR	15	15	41,514.60	7	40	990212	7	0.00
36	50	0	xc7001	XA	SR DEPTL INFO SYS ANA	17	8.5	17,689.18	1	20		7	0.00
DEPT 36 TOTALS								<u>1,624,629.42</u>					<u>124,402.45</u>

39	20	0	BA6012	AA	CLERK II	4	4	4,684.68	1	40	981028	1	0.00
39	20	0	BA8005	AA	CLERK III	10	10	14,285.20	7	40	981214	1	0.00
39	20	0	BC5006	AA	TYPIST CLERK II	3	3	3,663.24	6	40	980905	1	0.00
39	20	0	BC5013	AA	TYPIST CLERK II	9	9	12,477.96	7	40	990105	1	0.00
39	20	0	BC5016	AU	TYPIST CLERK II	17	0	0.00	2	40	950812	1	18,945.14
39	20	0	BC5017	AA	TYPIST CLERK II	7	7	9,883.16	7	40	981226	1	0.00
39	20	0	BC5018	AA	TYPIST CLERK II	1	1	1,438.31	7	40	990226	1	0.00
39	20	0	BC5019	AA	TYPIST CLERK II	7	7	8,300.95	1	40	990220	1	0.00
39	20	0	BC5021	AA	TYPIST CLERK II	5	5	5,821.55	1	40	981114	3	0.00
39	20	0	BC5024	XU	TYPIST CLERK II	17	0	0.00	4	20	950520	3	10,760.49
39	20	0	BC5028	AA	TYPIST CLERK II	5	5	6,203.20	4	40	990123	2	0.00
39	20	0	BC5043	AA	TYPIST CLERK II	16	16	22,590.08	7	40	980808	2	0.00
39	20	0	BC5046	AA	TYPIST CLERK II	17	17	21,872.71	4	40	970701	2	0.00
39	20	0	BC5051	AA	TYPIST CLERK II	12	12	16,637.28	7	40	990111	1	0.00

61

153

61

DEPT	DIV	SEC	POSITION	CO	DESCRIPTION	ACTUAL EQUIV			CALC AUTH			STEP	UNFUNDED	
						PPDS	PPDS	SAVINGS	HRS	VACATE	FILLED			
39	20	0	BC5052	AU	TYPIST CLERK II	3	3	3,492.93	1	40	980930	1	0.00	
39	20	0	BC5057	AA	TYPIST CLERK II	1	1	1,332.63	5	40	990306	1	0.00	
39	20	0	BC5060	AA	TYPIST CLERK II	3	3	3,997.89	5	40	990217	1	0.00	
39	20	0	BC5061	AA	TYPIST CLERK II	8	8	10,465.36	5	40	981128	1	0.00	
39	20	0	BC7011	AA	TYPIST CLERK III	4	4	5,072.16	1	40	980919	7	0.00	
39	20	0	BD3001	AA	CLERICAL SUPVR I	11	11	18,835.19	7	40	981017	981017	7	0.00
39	20	0	BD3002	AA	CLERICAL SUPVR I	6	6	8,559.36	2	40	981017	981017	7	0.00
39	20	0	BD3003	AA	CLERICAL SUPVR I	4	4	5,772.80	1	40	980919	980919	5	0.00
39	20	0	BJ4003	AA	DIVISION SECRETARY	13	13	18,736.12	5	40	980919	980919	5	0.00
39	20	0	BJ4004	AA	DIVISION SECRETARY	1	1	1,300.33	1	40	980808	980808	7	0.00
39	20	0	BN3003	AA	CASE DATA CLERK	4	4	6,035.04	7	40	990111	990111	7	0.00
39	20	0	BN6066	AA	SR CASE DATA CLERK	1	1	1,314.03	1	40	990220	990220	1	0.00
39	20	0	CH3002	AA	ACCOUNT CLERK	16	16	18,660.48	7	40	980820	980820	1	0.00
39	20	0	CH3003	AA	ACCOUNT CLERK	11	11	12,882.87	1	40	981226	981226	1	0.00
39	20	0	CH5003	AA	SR ACCOUNT CLERK	3	3	4,667.19	7	40	990211	990211	1	0.00
39	20	0	CH5012	AA	SR ACCOUNT CLERK	17	17	21,673.13	1	40	980919	980919	1	0.00
39	20	0	CH7006	AA	ACCOUNTING TECHNICIAN	4	4	5,839.32	1	40	980919	980919	1	0.00
39	20	0	CH9001	AA	ACCTG CLERICAL SUPV II	8	8	15,358.00	7	40	981125	981125	1	0.00
39	20	0	CH9003	AA	ACCTG CLERICAL SUPV II	9	9	14,089.59	1	40	981204	981204	3	0.00
39	20	0	MG6001	AA	BLDG MAINT WORKER II	5	5	7,964.60	7	40	981003	981003	1	0.00
39	20	0	RH3004	AA	WELFARE FRAUD INV II	9	9	19,814.04	7	40	990206	990206	1	0.00
39	20	0	SC3201	AA	ELIG WORKER I	16	16	19,912.80	1	40	980808	980808	1	0.00
39	20	0	SC3202	AA	ELIG WORKER I	17	17	21,290.63	2	40	980404	980404	1	0.00
39	20	0	SC3203	AA	ELIG WORKER I	16	16	19,912.80	1	40	980808	980808	1	0.00
39	20	0	SC3204	AA	ELIG WORKER I	16	16	19,552.80	1	40	980808	980808	1	0.00
39	20	0	SC3205	AA	ELIG WORKER I	11	11	14,325.19	1	40	981031	981031	1	0.00
39	20	0	SC3206	AA	ELIG WORKER I	10	10	13,022.90	1	40	981031	981031	1	0.00
39	20	0	SC3207	AA	ELIG WORKER I	10	10	13,022.90	1	40	981031	981031	1	0.00
39	20	0	SC3208	AA	ELIG WORKER I	10	10	13,022.90	1	40	981031	981031	1	0.00
39	20	0	SC3209	AA	ELIG WORKER I	13	13	16,179.15	1	40	980925	980925	1	0.00
39	20	0	SC3210	AA	ELIG WORKER I	11	11	14,325.19	1	40	981031	981031	1	0.00
39	20	0	SC3211	AA	ELIG WORKER I	11	11	14,325.19	1	40	981031	981031	1	0.00
39	20	0	SC3212	AA	ELIG WORKER I	11	11	14,325.19	1	40	981031	981031	1	0.00
39	20	0	SC3213	AA	ELIG WORKER I	17	17	20,275.73	1	40	960824	960824	1	0.00
39	20	0	SC3214	AA	ELIG WORKER I	17	17	20,275.73	1	40	960907	960907	1	0.00
39	20	0	SC3215	AA	ELIG WORKER I	17	17	21,856.22	5	40	940924	940924	1	0.00
39	20	0	SC3216	AA	ELIG WORKER I	17	17	19,394.11	1	40	930605	930605	1	0.00

DEPT	DIV	SEC	POSITION	CO	DESCRIPTION	ACTUAL EQUIV			CALC AUTH			STEP	UNFUNDED	
						PPDS VACANT	PPDS VACANT	SAVINGS	STEP	HRS	VACATE			FILLED
39	20	0	SC3217	AA	ELIG WORKER I	17	17	19,394.11	1	40	930605		1	0.00
39	20	0	SC3218	AA	ELIG WORKER I	17	17	20,392.18	3	40	940521		1	0.00
39	20	0	SC5005	TA	ELIG WORKER II	15	9	15,982.35	7	24	981201		1	0.00
39	20	0	SC5006	AA	ELIG WORKER II	1	1	1,519.52	4	40		990316	1	0.00
39	20	0	SC5010	AA	ELIG WORKER II	9	9	13,103.28	1	40		990306	1	0.00
39	20	0	SC5011	AA	ELIG WORKER II	16	16	22,543.20	2	40	980808		1	0.00
39	20	0	SC5013	AA	ELIG WORKER II	2	2	2,984.24	4	40		981216	1	0.00
39	20	0	SC5021	AA	ELIG WORKER II	1	1	1,487.23	5	40		981212	1	0.00
39	20	0	SC5035	AA	ELIG WORKER II	7	7	9,444.82	2	40		990220	1	0.00
39	20	0	SC5041	AA	ELIG WORKER II	2	2	3,107.54	5	40		981212	1	0.00
39	20	0	SC5044	AA	ELIG WORKER II	1	1	1,451.03	3	40		981226	1	0.00
39	20	0	SC5046	AA	ELIG WORKER II	16	16	24,688.00	6	40		990306	1	0.00
39	20	0	SC5048	AA	ELIG WORKER II	6	6	9,498.78	5	40	990305		1	0.00
39	20	0	SC5055	AA	ELIG WORKER II	9	9	12,680.55	2	40		990306	1	0.00
39	20	0	SC5064	AA	ELIG WORKER II	5	5	8,209.25	6	40		990306	6	0.00
39	20	0	SC5093	AU	ELIG WORKER II	17	0	0.00	4	40	960224		6	23,636.12
39	20	0	SC5096	AA	ELIG WORKER II	1	1	1,583.13	5	40		990311	5	0.00
39	20	0	SC5109	AA	ELIG WORKER II	10	10	14,089.50	2	40		990220	1	0.00
39	20	0	SC5115	AA	ELIG WORKER II	1	1	1,525.39	5	40		980808	2	0.00
39	20	0	SC5501	AA	ELIG WORKER II	10	10	13,717.60	1	40	981031		2	0.00
39	20	0	SC5503	AA	ELIG WORKER II	10	10	13,130.50	3	40	981031		2	0.00
39	20	0	SC5505	AA	ELIG WORKER II	4	4	6,688.68	7	40		990220	1	0.00
39	20	0	SC5508	AA	ELIG WORKER II	7	7	8,472.17	2	40		981031	1	0.00
39	20	0	SC5509	AA	ELIG WORKER II	1	1	1,455.92	1	40		980808	7	0.00
39	20	0	SC5510	AA	ELIG WORKER II	7	7	8,026.97	1	40	981212		7	0.00
39	20	0	SC5514	AA	ELIG WORKER II	1	1	1,455.92	1	40		980808	7	0.00
39	20	0	SC5518	AA	ELIG WORKER II	4	4	5,635.80	2	40		990306	1	0.00
39	20	0	SC5526	AA	ELIG WORKER II	17	17	23,952.15	2	40	980821		1	0.00
39	20	0	SC5531	AA	ELIG WORKER II	6	6	8,612.16	2	40		981229	2	0.00
39	20	0	SC5532	AA	ELIG WORKER II	17	17	22,338.51	1	40	970.712		2	0.00
39	20	0	SC5533	AA	ELIG WORKER II	7	7	10,191.44	1	40		981031	7	0.00
39	20	0	SC5534	AA	ELIG WORKER II	7	7	10,191.44	1	40		990220	1	0.00
39	20	0	SC5535	AA	ELIG WORKER II	15	15	21,838.80	1	40		990220	4	0.00
39	20	0	SC5536	AA	ELIG WORKER II	7	7	10,191.44	1	40		990306	1	0.00
39	20	0	SC5537	AA	ELIG WORKER II	7	7	10,191.44	1	40		990306	1	0.00
39	20	0	SC5730	AA	ELIG WORKER II	1	1	1,389.39	3	40		970712	3	0.00
39	20	0	SC5732	AA	ELIG WORKER II	3	3	4,558.56	4	40		980818	4	0.00

DEPT	DIV	SEC	POSITION	CO	DESCRIPTION	ACTUAL EQUIV			CALC AUTH					
						PPDS VACANT	PPDS VACANT	SAVINGS	STEP	HRS	VACATE	FILLED	STEP	UNFUNDED
39	20	0	SC5733	AA	ELIG WORKER II	12	12	17,471.04	1	40	981013		4	0.00
39	20	0	SC6016	AA	ELIG WORKER III	2	2	3,250.42	5	40		990301	1	0.00
39	20	0	SC6501	AA	ELIG WORKER III	5	5	8,771.85	7	40		981031	7	0.00
39	20	0	SC6502	AA	ELIG WORKER III	2	2	3,311.06	5	40	990220		7	0.00
39	20	0	SC6510	AA	ELIG WORKER III	17	0	0.00	7	40	971115		7	29,275.36
39	20	0	SC6514	AA	ELIG WORKER III	3	3	5,166.24	7	40		980905	3	0.00
39	20	0	SC6520	AA	ELIG WORKER III	4	4	6,888.32	7	40		980919	1	0.00
39	20	0	SC6701	AA	ELIG WORKER III	2	2	3,508.74	7	40		981031	3	0.00
39	20	0	SC6706	AU	ELIG WORKER III	1	7	0	7	40	971227		3	0.00
39	20	0	SC6708	AA	ELIG WORKER III	7	7	12,280.59	7	40		981114	6	0.00
39	20	0	SC6711	AA	ELIG WORKER III	1	1	1,524.41	1	40		980808	7	0.00
39	20	0	SC6713	AA	ELIG WORKER III	2	2	3,575.28	7	40		990220	7	0.00
39	20	0	SC6717	AA	ELIG WORKER III	5	5	8,938.20	7	40		990212	7	0.00
39	20	0	SC6720	AA	ELIG WORKER III	3	3	4,247.40	4	40		980905	7	0.00
39	20	0	SC6721	AA	ELIG WORKER III	3	3	4,573.23	1	40		981114	7	0.00
39	20	0	SC6722	AA	ELIG WORKER III	1	1	1,722.08	7	40		980808	5	0.00
39	20	0	SC6723	AA	ELIG WORKER III	2	2	3,230.84	6	40		981114	4	0.00
39	20	0	SC6726	AA	ELIG WORKER III	6	6	9,146.46	1	40		990220	7	0.00
39	20	0	SC6728	AA	ELIG WORKER III	1	1	1,656.51	6	40		980808	1	0.00
39	20	0	SC6729	AC	ELIG WORKER III	2	2	3,048.82	1	40			1	0.00
39	20	0	SE4003	AA	STAFF DEVELOP TRAINER	16	16	24,437.76	1	40	980930		1	0.00
39	20	0	SE5008	AA	ELIG SUPERVISOR I	4	4	5,870.60	7	40	990115		1	0.00
39	20	0	SE5009	AA	ELIG SUPERVISOR I	3	3	5,086.98	7	40		990306	1	0.00
39	20	0	SE8002	AA	PROG MGR-HRA	17	0	0.00	7	40	960830		1	45,065.98
39	20	0	SG7001	AA	INTAKE WORKER II	1	1	1,641.85	6	40	990306		1	0.00
39	20	0	SG7004	AA	INTAKE WORKER II	6	6	8,706.18	3	40		981109	1	0.00
39	20	0	SG7008	AA	INTAKE WORKER II	7	7	10,191.44	1	40	981130		1	0.00
39	20	0	SG7010	AA	INTAKE WORKER II	4	4	6,332.52	5	40		990206	5	0.00
39	20	0	SG7013	AA	INTAKE WORKER II	6	6	8,735.52	1	40		981017	1	0.00
39	20	0	SG7014	AA	INTAKE WORKER II	7	7	10,191.44	1	40		981031	1	0.00
39	20	0	SG7015	AA	INTAKE WORKER II	7	7	10,191.44	1	40		981104	1	0.00
39	20	0	SH1005	AA	EMPLOY TRAIN SPEC II	2	2	3,080.14	4	40		990206	2	0.00
39	20	0	SH1020	AA	EMPLOY TRAIN SPEC II	3	3	4,934.34	5	40		990315	7	0.00
39	20	0	SH1023	AA	EMPLOY TRAIN SPEC II	5	5	7,382.35	2	40		990306	1	0.00
39	20	0	SH1031	XA	EMPLOY TRAIN SPEC II	6	3	4,813.56	1	20			1	0.00
39	20	0	SH2010	AC	SR EMPLOY & TRAIN SPEC	17	17	27,096.13	1	40	980627		1	0.00
39	20	0	SH2011	AA	SR EMPLOY & TRAIN SPEC	9	9	15,604.38	3	40		990109	4	0.00

DEPT	DIV	SEC	POSITION	CO	DESCRIPTION	ACTUAL EQUIV			CALC AUTH			STEP	UNFUNDED
						PPDS VACANT	PPDS VACANT	SAVINGS	HRS	VACATE	FILLED		
39	20	0	SH2012	AA	SR EMPLOY & TRAIN SPEC	11	11	18,189.38	1	40	990109	1	0.00
39	20	0	SM2057	AA	SOCIAL WORKER I	6	6	10,320.66	7	40	981230	7	0.00
39	20	0	SM2061	XA	SOCIAL WORKER I	8	4	5,983.60	1	20	981114	6	0.00
39	20	0	SM4002	AA	SOCIAL WORKER II	8	8	15,858.88	7	40	990203	7	0.00
39	20	0	SM4054	AA	SOCIAL WORKER II	1	1	1,684.89	4	40	980808	2	0.00
39	20	0	SM4086	AA	SOCIAL WORKER II	3	3	4,758.21	1	40		2	0.00
39	20	0	SM4087	AA	SOCIAL WORKER II	3	3	4,758.21	1	40		2	0.00
39	20	0	SM8001	AA	SR SOCIAL WORKER	11	11	19,760.95	2	40	990201	2	0.00
39	20	0	SM8011	AA	SR SOCIAL WORKER	5	5	8,982.25	2	40	990113	2	0.00
39	20	0	SM8012	AA	SR SOCIAL WORKER	6	6	12,968.58	7	40	990119	5	0.00
39	20	0	SM8015	AA	SR SOCIAL WORKER	3	3	5,650.59	7	40	981003	1	0.00
39	20	0	SM8017	AA	SR SOCIAL WORKER	1	1	1,704.46	1	40	980814	1	0.00
39	20	0	SM8026	AA	SR SOCIAL WORKER	2	2	4,322.86	7	40	990201	5	0.00
39	20	0	SM8029	AA	SR SOCIAL WORKER	10	10	21,614.30	7	40	990220	7	0.00
39	20	0	SM8030	JA	SR SOCIAL WORKER	8	6.4	11,670.80	2	32	981204	7	0.00
39	20	0	SM8032	AA	SR SOCIAL WORKER	5	5	9,921.65	5	40	990119	5	0.00
39	20	0	SM8034	XA	SR SOCIAL WORKER	7	3.5	8,088.57	7	20	981110	7	0.00
39	20	0	SM8042	AA	SR SOCIAL WORKER	17	17	33,101.38	5	40	980627	7	0.00
39	20	0	SM8044	AA	SR SOCIAL WORKER	2	2	3,473.50	1	40	990306	1	0.00
39	20	0	SM8071	AA	SR SOCIAL WORKER	2	2	4,405.06	7	40	990220	1	0.00
39	20	0	SM8073	AA	SR SOCIAL WORKER	10	10	17,367.50	1	40	981216	1	0.00
39	20	0	SM8074	AA	SR SOCIAL WORKER	7	7	12,157.25	1	40	981031	5	0.00
39	20	0	SM8075	AA	SR SOCIAL WORKER	6	6	10,420.50	1	40	981031	7	0.00
39	20	0	SM8076	AA	SR SOCIAL WORKER	5	5	8,683.75	1	40	981003	1	0.00
39	20	0	SM8077	AA	SR SOCIAL WORKER	9	9	15,630.75	1	40	981128	3	0.00
39	20	0	SM8078	AA	SR SOCIAL WORKER	4	4	6,947.00	1	40	980930	1	0.00
39	20	0	SM8079	AA	SR SOCIAL WORKER	5	5	8,683.75	1	40	981005	1	0.00
39	20	0	SM8080	AA	SR SOCIAL WORKER	5	5	8,683.75	1	40	981003	1	0.00
39	20	0	SM8082	AA	SR SOCIAL WORKER	9	9	15,630.75	1	40	981207	4	0.00
39	20	0	SM8085	XA	SR SOCIAL WORKER	17	8.5	15,684.54	1	20		4	0.00
39	20	0	SM8088	AA	SR SOCIAL WORKER	3	3	5,210.25	1	40		4	0.00
39	20	0	SM8089	AA	SR SOCIAL WORKER	2	2	3,473.50	1	40	330918	1	0.00
39	20	0	SM8090	XA	SR SOCIAL WORKER	3	1.5	2,767.86	1	20		1	0.00
39	20	0	SM9002	AA	SR STF DEVEL TRAINER	2	2	4,039.10	3	40	990220	1	0.00
39	20	0	SN8011	AA	SOCIAL WORK SUPVR II	17	17	31,986.86	1	40		1	0.00
39	20	0	SN8012	AA	SOCIAL WORK SUPVR II	4	4	7,526.32	1	40	981002	3	0.00
39	20	0	SN8013	AA	SOCIAL WORK SUPVR II	1	1	1,881.58	1	40	990220	3	0.00

ACTUAL EQUIV
 PPDS PPDS
 VACANT VACANT SAVINGS
 CALC AUTH
 STEP HRS VACATE FILLED STEP UNFUNDED

DEPT	DIV	SEC	POSITION	CO	DESCRIPTION	VACANT	VACANT	SAVINGS	STEP	HRS	VACATE	FILLED	STEP	UNFUNDED
39	20	0	SP6001	AA	ASST HUMAN RES AGY ADM	7	7	22,816.78	1	40		981114	1	0.00
39	20	0	us5001	AA	SR DEPTL ADMIN ANALYST	17	17	35,801.66	1	40			1	0.00
39	20	0	UU5001	AA	DEPTL DP COORDINATOR	6	6	9,381.36	1	40		981017	3	0.00
39	20	0	UU5003	AA	DEPTL DP COORDINATOR	4	4	7,741.60	7	40	990122		3	0.00
39	20	0	UU7003	AA	DEPTL SYSTEMS ANALYST	5	5	9,092.80	1	40		981003	4	0.00
39	20	0	XA5006	AA	ASSOC HUMAN RES ANALYS	1	1	2,360.62	6	40		981003	6	0.00
39	20	0	XA5008	AA	ASSOC HUMAN RES ANALYS	4	4	9,886.12	7	40		981017	4	0.00
39	20	0	XA7001	AA	SR HUMAN RES ANALYST	3	3	7,932.57	6	40	990220		4	0.00
39	20	0	XA7002	AA	SR HUMAN RES ANALYST	17	17	44,639.62	7	40	971115		4	0.00
39	20	0	XA7007	AA	SR HUMAN RES ANALYST	1	1	2,105.98	1	40		980808	6	0.00
39	20	0	XA7009	AA	SR HUMAN RES ANALYST	1	1	2,105.98	1	40		990220	6	0.00
39	20	0	xc5007	AA	DEPTL INFO SYS ANALYST	15	15	25,464.15	1	40		990220	1	0.00
39	20	0	229002	AA	TO BE CLASSIFIED	9	9	6,488.28	1	40	NO HIS		1	0.00
39	20	0	229003	AC	TO BE CLASSIFIED	17	17	12,255.64	1	40			1	0.00
39	20	0	229004	AA	TO BE CLASSIFIED	7	7	5,046.44	1	40	NO HIS		1	0.00
39	20	0	ZZ9005	AA	TO BE CLASSIFIED	7	7	5,046.44	1	40	NO HIS		1	0.00
39	20	0	229006	AA	TO BE CLASSIFIED	7	7	5,046.44	1	40	NO HIS		1	0.00
39	20	0	229007	AA	TO BE CLASSIFIED	7	7	5,046.44	1	40	NO HIS		1	0.00
39	20	0	229008	AA	TO BE CLASSIFIED	4	4	2,883.68	1	40	NO HIS		1	0.00
39	20	0	229009	AA	TO BE CLASSIFIED	4	4	2,883.68	1	40	NO HIS		1	0.00
39	20	0	ZZ9010	AA	TO BE CLASSIFIED	4	4	2,883.68	1	40	NO HIS		1	0.00
DEPT 39 20 TOTALS								<u>1,871,251.03</u>						<u>127,683.09</u>
39	30	0	SR5001	AA	TO BE CLASSIFIED	4	4	0.00	1	40	NO HIS		1	0.00
39	30	0	SR7002	AA	VETERANSSVCREP	3	3	4,373.61	1	40		981031	3	0.00
DEPT 39 30 TOTALS								<u>4,373.61</u>						<u>0.00</u>
39	40	0	BP1003	AU	PUBLIC GUARDIAN CLERK	17	0	0.00	1	40			3	22,454.96
39	40	0	DG4003	AA	DEP PUB GUARDIAN	4	4	6,825.68	4	40		980921	1	0.00
39	40	0	DG4004	AA	DEP PUB GUARDIAN	8	8	11,459.44	1	40		981114	1	0.00
39	40	0	DG4005	AA	DEP PUB GUARDIAN	3	3	4,940.19	2	40	990129		1	0.00
DEPT 39 40 TOTALS								<u>23,225.31</u>						<u>22,454.96</u>
DEPT 39 TOTALS								<u>1,898,849.95</u>						<u>150,138.05</u>

DEPT	DIV	SEC	POSITION	CO	DESCRIPTION	ACTUAL EQUIV			CALC AUTH			STEP	UNFUNDED	
						PPDS VACANT	PPDS VACANT	SAVINGS	STEP	HRS	VACATE			FILLED
49	0	0	BJ5001	AA	SECRETARY	1	1	1,693.71	7	40		990104	3	0.00
49	0	0	CH7002	AA	ACCOUNTING TECHNICIAN	2	2	3,565.50	7	40		990306	6	0.00
49	0	0	GK3001	XC	HEAD LIFEGUARD/INSTRUC	1	0.5	563.98	1	20		990306	2	0.00
49	0	0	GK3002	XC	HEAD LIFEGUARD/INSTRUC	1	0.5	563.98	1	20		990306	2	0.00
49	0	0	GK3003	XC	HEAD LIFEGUARD/INSTRUC	2	1	1,127.96	1	20			2	0.00
49	0	0	GK3004	XC	HEAD LIFEGUARD/INSTRUC	2	1	1,127.96	1	20			2	0.00
49	0	0	GT4002	LA	REC PROGRAM SPEC	5	3.75	4,575.15	1	30		981003	1	0.00
49	0	0	GT4003	LA	REC PROGRAM SPEC	5	3.75	4,575.15	1	30		981003	1	0.00
49	0	0	GT4004	LA	REC PROGRAM SPEC	5	3.75	4,575.15	1	30		981003	1	0.00
49	0	0	GT5002	AA	RECREATION COORDINATOR	4	4	6,082.00	2	40	990123		1	0.00
49	0	0	GT7005	AU	RECREATION SUPERVISOR	13	0	0.00	1	40		990123	2	20,593.30
49	0	0	ME2005	AA	PARKS MAINT WORKER II	2	2	2,702.42	3	40		981231	3	0.00
49	0	0	ME2012	AA	PARKS MAINT WORKER II	2	2	2,637.84	1	40	990219		3	0.00
49	0	0	ME4005	AA	PARKS MAINT WORKER III	10	10	15,919.30	5	40		981215	3	0.00
49	0	0	MG8001	AA	BLDG MAINT WORKER III	6	6	9,187.62	1	40		981026	5	0.00
DEPT 49 TOTALS								<u>58,897.72</u>						<u>20,593.30</u>

51	10	0	BB5002	AA	PERSONNEL CLERK	9	9	11,791.08	2	40		990109	7	0.00
51	10	0	BC5001	AA	TYPIST CLERK II	8	8	9,486.80	1	40		981114	2	0.00
51	10	0	VG8001	AA	EMPLOYEE REL PROG MGR	17	17	58,642.52	7	40	980626		2	0.00
51	30	0	BB5002	JA	PERSONNEL CLERK	2	1.6	2,139.58	2	32		981212	7	0.00
51	30	0	VE9001	AA	SUPVG PERSONEL ANALYST	10	10	30,531.50	7	40		990220	1	0.00
51	50	0	VE2002	AA	PERSONNEL TECHNICIAN	2	2	3,420.66	7	40	990220		1	0.00
DEPT 51 TOTALS								<u>116,012.14</u>						<u>0.00</u>

54	0	0	BC5001	AA	TYPIST CLERK II	5	5	5,929.25	1	40	990114		1	0.00
54	0	0	CH7001	AA	ACCOUNTING TECHNICIAN	2	2	2,813.98	1	40		980822	7	0.00
54	0	0	EE3001	AA	SR CIVIL ENGINEER	9	9	32,157.18	6	40		990104	6	0.00
54	0	0	GA8028	AA	PLANNER IV	8	8	16,438.24	1	40		981117	1	0.00
54	0	0	GA8032	AA	PLANNER IV	17	17	48,239.20	7	40	971226		1	0.00
54	0	0	GA9002	AU	SUPVG PLANNER	17	0	0.00	7	40	950103		1	40,387.58
54	0	0	GB2001	AA	HYDROLOGIST	1	1	2,782.80	7	40	990306		1	0.00
54	0	0	GL7001	AA	CODE COMPL INVEST III	14	14	26,465.46	1	40		990216	1	0.00
54	0	0	GL7004	AA	CODE COMPL INVEST III	14	14	26,465.46	1	40		990304	1	0.00

-22-

19

159

DEPT	DIV	SEC	POSITION	CO	DESCRIPTION	ACTUAL EQUIV		SAVINGS	CALC AUTH			FILLED	STEP	UNFUNDED
						PPDS VACANT	PPDS VACANT		STEP	HRS	VACATE			
54	0	0	GL7005	AA	CODE COMPL INVEST III	13	13	30,439.24	7	40		990206	1	0.00
54	0	0	TM8001	AA	RESOURCE PLANNER III	17	17	32,136.63	1	40			1	0.00
54	0	0	TR6010	AA	BLDG INSPECTOR II	2	2	4,528.36	7	40		981003	1	0.00
54	0	0	TR7001	AC	HOUS REHAB/CONST SPEC	17	17	31,221.52	1	40			1	0.00
54	0	0	TR7002	AC	HOUS REHAB/CONST SPEC	17	17	31,221.52	1	40			1	0.00
54	0	0	TR8001	AA	SR BLDG INSPECTOR	4	4	7,835.52	1	40		980919	7	0.00
54	0	0	us3001	AA	DEPTL ADMIN ANALYST	17	17	32,817.48	1	40	980508		7	0.00
54	0	0	us5001	AA	SR DEPTL ADMIN ANALYST	1	1	2,701.09	7	40		980808	7	0.00
54	0	0	ZZ9001	AA	TO BE CLASSIFIED	16	16	11,534.72	1	40	NO HIS		7	0.00
DEPT 54 TOTALS								<u>345,727.65</u>						<u>40,387.58</u>

57	20	0	FG3001	AA	COOK'S ASSISTANT	3	3	3,422.49	1	40		990306	1	0.00
57	20	0	SV5001	AB	GROUP SUPERVISOR II	2	2	2,569.78	2	40		981031	1	0.00
57	20	0	SV5004	AB	GROUP SUPERVISOR II	1	1	1,325.37	3	40		980919	3	0.00
57	-20	0	SV5007	AB	GROUP SUPERVISOR II	1	1	1,245.28	1	40		981114	1	0.00
57	20	0	SV5008	AB	GROUP SUPERVISOR II	2	2	2,914.26	5	40	990220		1	0.00
57	20	0	SV5011	AB	GROUP SUPERVISOR II	1	1	1,325.37	3	40		981114	1	0.00
57	20	0	SV5012	AB	GROUP SUPERVISOR II	3	3	3,854.67	2	40		981226	1	0.00
57	20	0	SV5013	AB	GROUP SUPERVISOR II	2	2	2,490.56	1	40		981226	1	0.00
57	20	0	SV5014	AB	GROUP SUPERVISOR II	6	6	7,606.02	1	40		990119	1	0.00
57	20	0	SV7001	AA	SR GROUP SUPERVISOR	1	1	1,724.11	7	40		990220	5	0.00
57	20	0	SV7002	AA	SR GROUP SUPERVISOR	2	2	2,895.32	3	40		981017	7	0.00
57	20	0	ZZ9001	AA	TO BE CLASSIFIED	13	13	9,371.96	1	40	NO HIS		7	0.00
DEPT 54 20 TOTALS								<u>40,745.19</u>						<u>0.00</u>

57	40	0	BC5001	AC	TYPIST CLERK II	17	17	20,159.45	1	40			7	0.00
57	40	0	BC5007	XA	TYPIST CLERK II	3	1.5	2,242.38	7	20		980905	1	0.00
57	40	0	BC7002	AA	TYPIST CLERK III	3	3	4,629.00	7	40	990206		1	0.00
57	40	0	CH5002	AA	SR ACCOUNT CLERK	2	2	2,504.78	1	40		981017	3	0.00
57	40	0	SU2002	AA	PROBATION AIDE	9	9	13,332.24	4	40		981207	3	0.00
57	40	0	SU2004	AA	PROBATION AIDE	6	6	8,653.26	3	40	981226		3	0.00
57	40	0	SU6004	AB	DEP PROBATION OFF II	5	5	7,074.70	1	40		981003	1	0.00
57	40	0	SU6008	AB	DEP PROBATION OFF II	2	2	2,829.88	1	40		981022	1	0.00
57	40	0	SU6014	AB	DEP PROBATION OFF II	2	2	3,654.90	7	40		990206	1	0.00
57	40	0	SU6021	AB	DEP PROBATION OFF II	2	2	3,188.14	4	40		981114	1	0.00

DEPT	DIV	SEC	POSITION	CO	DESCRIPTION	ACTUAL EQUIV			CALC AUTH					
						PPDS	PPDS	SAVINGS	STEP	HRS	VACATE	FILLED	STEP	UNFUNDED
57	40	0	SU6022	AB	DEP PROBATION OFF II	3	3	4,244.82	1	40		980919	1	0.00
57	40	0	SU6026	AB	DEP PROBATION OFF II	3	3	5,482.35	7	40		980919	1	0.00
57	40	0	SU6027	AB	DEP PROBATION OFF II	2	2	3,654.90	7	40		980919	1	0.00
57	40	0	SU6034	AB	DEP PROBATION OFF II	2	2	2,829.88	1	40		980905	1	0.00
57	40	0	SU6037	AD	DEP PROBATION OFF II	1	1	1,414.94	1	40		981226	1	0.00
57	40	0	SU8002	AA	DEP PROBATION OFF III	1	1	1,937.68	7	40		980808	7	0.00
57	40	0	SU8010	AA	DEP PROBATION OFF III	1	1	1,957.49	7	40		980822	7	0.00
57	40	0	SW7002	AA	ASST PROB DIV DIR	1	1	2,447.42	7	40		980919	7	0.00
57	90	0	BC7002	AA	TYPIST CLERK III	2	2	3,086.00	7	40	990108		7	0.00
57	90	0	SS5002	AA	PRE-TRIAL SVCS SPEC	2	2	3,159.80	6	40	990220		7	0.00
DEPT 57 40, 90 TOTALS								<u>98,921.01</u>						<u>0.00</u>
DEPT 57 TOTALS								<u>139,666.20</u>						<u>0.00</u>

66	10	10	BD3001	AA	CLERICAL SUPVR I	1	1	1,443.20	1	40		980808	7	0.00
66	10	10	BN5001	AA	SHERIFFS RECORDS CLERK	14	14	22,382.92	7	40		990220	1	0.00
66	10	10	BN5006	AA	SHERIFFS RECORDS CLERK	4	4	5,424.44	2	40		990206	6	0.00
66	10	10	BN5015	XA	SHERIFFS RECORDS CLERK	1	0.5	811.07	5	20	990120		6	0.00
66	10	10	BN5016	AA	SHERIFFS RECORDS CLERK	4	4	5,526.20	2	40	990123		6	0.00
66	10	10	RE5201	AB	DEP SHERIFF ++	1	1	2,658.26	7	40		990306	7	0.00
66	10	10	UR1001	AA	ADMIN AIDE	1	1	1,459.83	1	40			7	0.00
66	10	10	229003	AA	TO BE CLASSIFIED	16	16	11,534.72	1	40	NO HIS		7	0.00
66	10	30	BN7001	AA	SHERIFF'S COM SERV OFR	1	1	1,456.90	1	40			7	0.00
66	10	30	BN7002	AA	SHERIFF'S COM SERV OFR	1	1	1,456.90	1	40			7	0.00
66	10	30	RC3302	XA	SHERIFFS SECURITY OFFR	1	0.5	761.29	1	20	990306		7	0.00
66	10	30	RC3303	XA	SHERIFFS SECURITY OFFR	9	4.5	6,851.61	1	20	981114		7	0.00
66	10	30	RE5305	AB	DEP SHERIFF ++	7	7	18,607.82	7	40		990220	1	0.00
66	10	30	RE5307	AB	DEP SHERIFF ++	14	14	31,075.10	3	40	980905		1	0.00
66	10	30	RE5322	AB	DEP SHERIFF ++	6	6	14,461.56	7	40		981017	1	0.00
66	10	30	RE5340	AB	DEP SHERIFF ++	6	6	12,092.46	3	40		981017	1	0.00
66	10	30	RE5358	AB	DEP SHERIFF ++	8	8	10,529.44	1	40	981128		1	0.00
66	10	30	RE5366	AB	DEP SHERIFF ++	9	9	20,895.75	4	40	981114		1	0.00
66	10	30	RE5377	AB	DEP SHERIFF ++	6	6	12,751.86	1	40		981017	1	0.00
66	10	30	RE5378	AB	DEP SHERIFF ++	6	6	12,751.86	1	40		981019	1	0.00
66	10	30	RE5379	AB	DEP SHERIFF ++	17	17	36,130.27	1	40			1	0.00

101

-24-

19

DEPT	DIV	SEC	POSITION	CO	DESCRIPTION	ACTUAL EQUIV			CALC AUTH			STEP	UNFUNDED
						PPDS	PPDS	SAVINGS	STEP	HRS	VACATE		
66	10	30	RE5380	AB	DEP SHERIFF ++	17	17	36,130.27	1	40		1	0.00
66	10	30	RE5381	AB	DEP SHERIFF ++	3	3	6,375.93	1	40	981114	5	0.00
66	10	30	229001	AA	TO BE CLASSIFIED	17	17	12,255.64	1	40		5	0.00
66	10	30	229002	AA	TO BE CLASSIFIED	17	17	12,255.64	1	40		5	0.00
66	10	70	CH3001	AA	ACCOUNT CLERK	8	8	11,107.20	6	40	981128	5	0.00
DEPT 66 10 TOTALS													<u>0.00</u>

309,188.14

66	20	10	BC7101	AA	TYPIST CLERK III	6	6	9,087.78	7	40	981116	1	0.00
66	20	10	BC7102	AA	TYPIST CLERK III	6	6	7,655.22	2	40	981224	1	0.00
66	20	10	BC7103	AA	TYPIST CLERK III	3	3	4,543.89	7	40	981116	1	0.00
66	20	10	CH3002	AA	ACCOUNT CLERK	4	4	4,888.20	2	40	981113	5	0 0 0
66	20	30	RC6205	AB	SHERIFFS CORRECTIN OFF	4	4	6,276.16	1	40	980928	1	0.00
66	20	30	RC6207	AB	SHERIFFS CORRECTIN OFF	3	3	4,707.12	1	40	990206	1	0.00
66	20	30	RC6213	AB	SHERIFFS CORRECTIN OFF	3	3	4,707.12	1	40	980928	1	0.00
66	20	30	RC6214	AB	SHERIFFS CORRECTIN OFF	1	1	1,569.04	1	40	981017	1	0.00
66	20	30	RC6225	AB	SHERIFFS CORRECTIN OFF	6	6	10,271.94	3	40	990111	1	0.00
66	20	30	RC6228	AB	SHERIFFS CORRECTIN OFF	3	3	5,135.97	3	40	990206	1	0.00
66	20	30	RC6229	XB	SHERIFFS CORRECTIN OFF	7	3.5	7,688.31	7	20	990109	7	0.00
66	20	30	RC6230	XB	SHERIFFS CORRECTIN OFF	12	6	13,179.96	7	20	980928	7	0.00
66	20	30	RC6234	AB	SHERIFFS CORRECTIN OFF	3	3	5,135.97	3	40	990206	7	0.00
66	20	30	RC6239	AB	SHERIFFS CORRECTIN OFF	6	6	10,271.94	3	40	981026	1	0.00
66	20	30	RC6241	AB	SHERIFFS CORRECTIN OFF	2	2	3,423.98	3	40	980822	1	0.00
66	20	30	RC6244	AB	SHERIFFS CORRECTIN OFF	2	2	3,278.10	2	40	980824	1	0.00
66	20	30	RC6245	AB	SHERIFFS CORRECTIN OFF	6	6	12,226.74	7	40	980822	7	0.00
66	20	30	RC6247	AB	SHERIFFS CORRECTIN OFF	6	6	10,271.94	3	40	981017	1	0.00
66	20	30	RC6248	AB	SHERIFFS CORRECTIN OFF	3	3	4,917.15	2	40	990206	1	0.00
66	20	30	RC6250	AB	SHERIFFS CORRECTIN OFF	3	3	6,113.37	7	40	990206	1	0.00
66	20	30	RC6252	AB	SHERIFFS CORRECTIN OFF	6	6	12,226.74	7	40	981017	1	0.00
66	20	30	RC6254	AB	SHERIFFS CORRECTIN OFF	6	6	10,271.94	3	40	990111	1	0.00
66	20	30	RC6257	AB	SHERIFFS CORRECTIN OFF	3	3	4,707.12	1	40	980905	4	0.00
66	20	30	RC6258	AB	SHERIFFS CORRECTIN OFF	17	17	26,673.68	1	40		4	0.00
66	20	30	RC6259	AB	SHERIFFS CORRECTIN OFF	7	7	10,983.28	1	40	NO HIS	4	0.00
66	20	30	RC6260	AB	SHERIFFS CORRECTIN OFF	7	7	10,983.28	1	40	NO HIS	4	0.00
66	20	30	RC6261	AB	SHERIFFS CORRECTIN OFF	7	7	10,983.28	1	40	NO HIS	4	0.00
66	20	30	RC6262	AB	SHERIFFS CORRECTIN OFF	7	7	10,983.28	1	40	NO HIS	4	0.00
66	20	30	RC6901	AB	SHERIFFS CORRECTIN OFF	8	8	12,552.32	1	40	990220	1	0.00

0.00

DEPT	DIV	SEC	POSITION	CO	DESCRIPTION	ACTUAL EQUIV			CALC AUTH					
						PPDS VACANT	PPDS VACANT	SAVINGS	STEP	HRS	VACATE	FILLED	STEP UNFUNDED	
66	20	30	RC6902	AB	SHERIFFS CORRECTIN OFF	10	10	15,690.40	1	40			1	0.00
66	20	30	RC6903	AB	SHERIFFS CORRECTIN OFF	10	10	15,690.40	1	40			1	0.00
66	20	30	RC6904	AB	SHERIFFS CORRECTIN OFF	10	10	15,690.40	1	40			1	0.00
66	20	40	RC6003	AB	SHERIFFS CORRECTIN OFF	12	12	20,543.88	3	40	981001		1	0.00
66	20	50	RC6320	AB	SHERIFFS CORRECTIN OFF	1	1	1,569.04	1	40		990206	1	0.00
66	20	50	RC6321	AA	SHERIFFS CORRECTIN OFF	1	1	1,569.04	1	40		990206	3	0.00
66	20	50	RC8307	AA	SUPVG CORRECTIONS OFFR	1	1	1,709.07	1	40		990206	7	0.00
66	20	50	RC8308	AA	SUPVG CORRECTIONS OFFR	1	1	1,709.07	1	40		990216	7	0.00
DEPT 66 20 TOTALS								<u>319,886.12</u>					<u>0.00</u>	
DEPT 66 TOTALS								<u>629,074.26</u>					<u>0.00</u>	

73	0	0	BC7001	AA	TYPYST CLERK III	12	12	15,216.48	1	40	NO HIS		1	0.00
73	0	0	BH3001	AA	LEGAL SECRETARY II	5	5	7,025.20	1	40	980529		1	0.00
73	0	0	BY6004	AA	COLLECTION OFFICER	8	8	14,676.88	7	40	981201		1	0.00
73	0	0	CH3002	AA	ACCOUNT CLERK	9	9	10,804.68	2	40		981207	1	0.00
73	0	0	CH3004	AA	ACCOUNT CLERK	7	7	8,499.54	1	40		981031	1	0.00
73	0	0	CH5002	AA	SR ACCOUNT CLERK	3	3	3,824.67	1	40	NO HIS		1	0.00
73	0	0	CH7005	AA	ACCOUNTING TECHNICIAN	5	5	7,299.15	1	40		990211	6	0.00
DEPT 73 TOTALS								<u>67,346.60</u>					<u>0.00</u>	

Average Full Time Equivalent Vacated Positions - HSA	47
Average Full Time Equivalent Vacated Positions - HRA	74
Average Full Time Equivalent Vacated Positions - OTHER	72
Average Full Time Equivalent Vacated Positions - GENERAL FUND	<u>194</u>

-26-

County of Santa Cruz
Auditor-Controller
New Hire Report & Terminations
July 1, 1998 through March 31, 1999

164

Budget	Department	Hires 270	Terminations 173	Net Change 86
0320	Agricultural Commissioner	1	5	-4
0330	Mosquito Abatement	1	2	-1
0600	Agricultural Extension Service	1	0	1
0900	Assessor	2	2	0
1200	Auditor-Controller	3	4	-1
1500	Board Of Supervisors	3	2	1
1810	County Administrative Officer	6	0	6
1820	Clerk Of The Board	0	0	0
1830	Economic Development-Advertising	0	0	0
2120	Recorder	0	1	-1
2140	Elections	0	0	0
2400	County Counsel	0	1	-1
2710	District Attorney-Administration	10	2	8
2720	District Attorney-Operations	4	7	-3
3020	Emergency Services	0	0	0
3030	Communications	2	2	0
3040	County Fire Service	0	0	0
3310	General Services-Administration	2	2	0
3330	Facilities management	7	6	1
3340	Purchasing	0	0	0
3601	Health Services-Administration	5	4	1
3610	Health Services-Medical Clinics	18	15	3
3620	Health Services-Public Health	13	4	9
3630	Health Services-Mental Health	19	18	1
3640	Health Services-Substance Abuse	2	2	0
3650	Health Services-Medicruz	3	4	-1
3920	Human Resources Social Services	67	27	40
3922	Human Resources Social Services-M	0	0	0
3930	Veterans Service Office	1	0	1
3940	Public Guardian	1	1	0
4900	Open Space & Cultural Services	10	2	8
5101	Personnel - Employee Relations	1	0	1
5110	Personnel - Training	1	2	-1
5130	Personnel - Personnel Services	2	1	1
5410	Personnel - Admin/Permit Service	0	0	0
5400	Planning Department	8	6	2
5720	Juvenile Hall	11	3	8
5740	Probation Department	5	7	-2
6610	Sheriff-Coroner	6	4	2
6620	Detention	17	12	5
7300	Treasurer & Tax Collector - Admin	2	0	2
Total General Fund		234	148	86
3335	Service Center	0	0	0
3960	Job Training And Partnership (JTPA)	12	2	10
4210	Information Services - Administration	0	0	0
4220	Information Services - Telephone	0	3	-3
4230	Duplicating	0	0	0
4240	Data Processing	3	1	2
5151	Personnel - Risk Management	0	0	0
5160	Affirmative Action	0	0	0
6000	Public Works Department	19	18	1
6101	RDA - Administration	2	0	2
7200	Regional Transportation Commission	0	1	-1
Other	County Wide	36	25	0
Other	County Wide	270	173	97

Auditor-Controller
 Vacant Position Summary
 July 1, 1998 through March 31, 1999

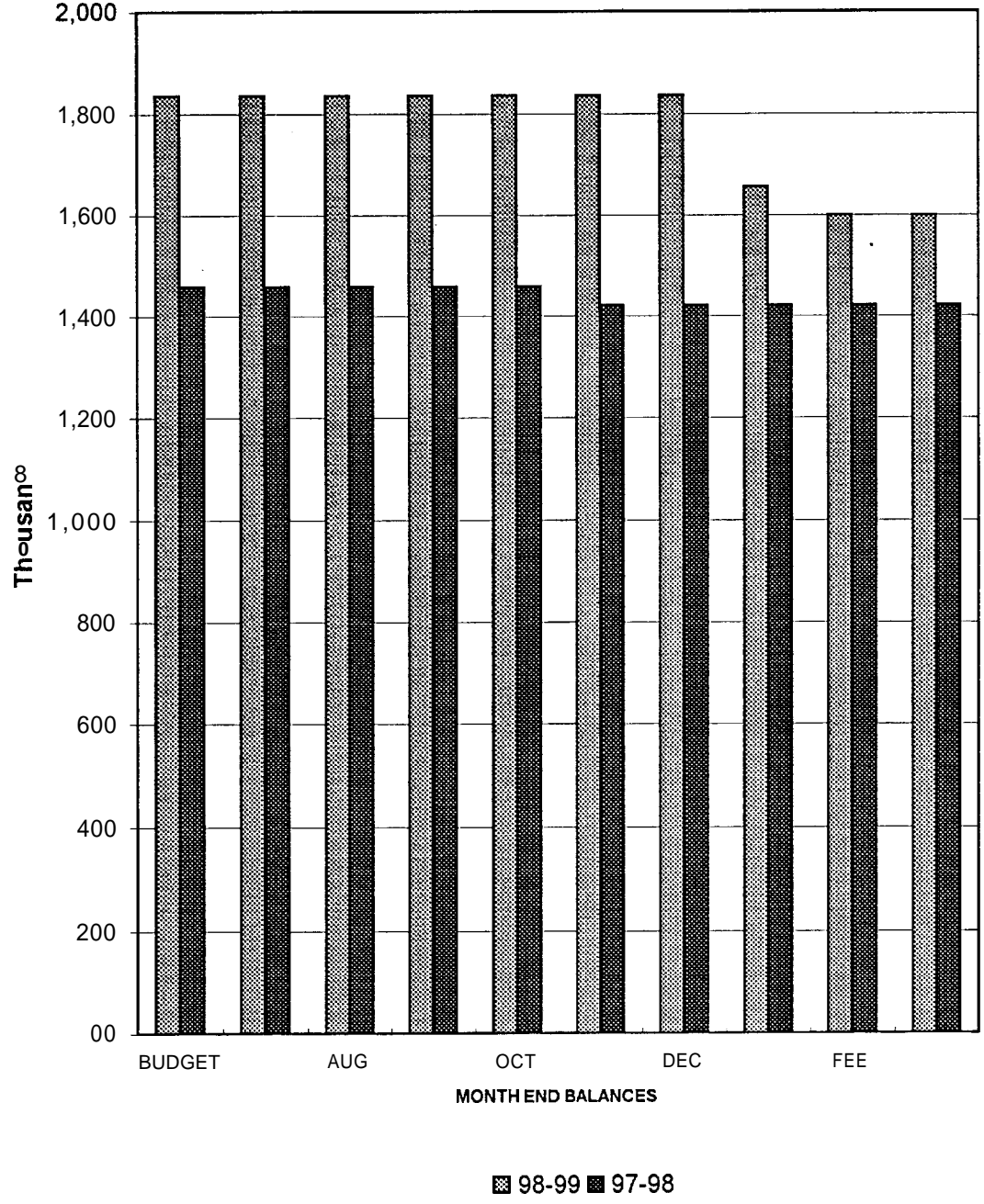
Dept	Title	Current Vacant Position Net of Unfunded	Desired Number of Vacant Positions	Difference Over/ (Under)
TOTAL GENERAL FUND		193.93	- 58.94	134.99
0320	Agricultural Commission	1.09	0.38	0.71
0330	Mosquito Abatement	0.65	0.00	0.65
0600	Agricultural Ext Service	0.47	0.00	0.47
0900	Assessor	3.24	0.78	2.46
1210	Auditor-Controller	1.15	0.59	0.56
1500	Board Of Supervisors	0.53	0.00	0.53
1600	Commissions	0.50	0.00	0.50
1810	Administrative Officer	1.68	0.31	1.37
1820	Clerk Of The Board	0.00	0.00	0.00
1830	Economic Dev -Advertising	0.00	0.00	0.00
2120	Recorder	0.29	0.24	0.05
2140	Elections	0.59	0.14	0.45
2400	County Counsel	1.94	0.42	1.52
2710	District Attorney-Admin	1.50	2.41	(0.91)
2720	District Attorney-Operations	5.79	1.85	3.94
3020	Emergency Services	0.00	0.00	0.00
3030	Communications	1.12	0.00	1.12
3040	County Fire Service	0.00	0.00	0.00
3310	General Services-Admin	0.06	0.35	(0.29)
3330	Facilities Management	4.65	1.23	3.42
3340	Purchasing	0.00	0.11	(0.11)
3601	Health Services-Administration	4.22	1.90	2.32
3610	Health Services-Medical Clinics	12.80	4.72	8.08
3620	Health Services-Public Health	7.09	6.33	0.76
3630	Health Services-Mental Health	17.54	7.44	10.10
3640	Health Services-Substance Abus	3.04	0.61	2.43
3650	Health Services-Medicruz	2.76	0.95	1.81
3920	Human Resources Social Servic	72.11	15.61	56.50
3922	Human Resources Social Servic	0.00	0.27	(0.27)
3930	Veterans Service Office	0.41	0.14	0.27
3940	Public Guardian	1.18	0.49	0.69
4900	Open Space & Cultural Services	3.19	0.00	3.19
5101	Personnel-Employee Rel	0.00	0.11	(0.11)
5110	Personnel-Training	1.88	0.16	1.72
5130	Personnel-Personnel Ser	0.68	0.16	0.52
5140	Personnel-Admin/Permit	0.00	0.04	(0.04)
5400	Planning Department	10.18	3.07	7.11
5720	Juvenile Hall	2.18	0.62	1.56
5740	Probation Department	3.74	2.22	1.52
5770	Care of Court Wards	0.00	0.00	0.00
5790	Pre-Trial Services	0.24	0.00	0.24
6610	Sheriff-Coroner	11.15	4.94	6.21
6620	Detention Facilities	11.41	0.00	11.41
7300	Treasurer & Tax Collector	2.88	0.35	2.53
TOTAL GENERAL FUND		193.93	58.94	134.99

Average Full Time Equivalent Vacated Positions-HRA	74
Average Full Time Equivalent Vacated Positions-HSA	47
Average Full Time Equivalent Vacated Positions-District Attorney	7
Average Full Time Equivalent Vacated Positions-Others	65
Average Full Time Equivalent Vacated Positions-General Fund	194

County of Santa Cruz
Auditor-Controller
Vacant Position Summary
July 1, 1998 through March 31, 1999

Dept	Title	1998-99 Positions Allowed	Unfunded Positions	1998-99 Positions Allowed Net of Unfunded	Varied Savings Factor	Desired Number of Vacant Positions	Current Vacant Position Net of Unfunded	Difference Over/ (Under)
TOTAL COUNTY WIDE		2.34755	14.25	2.33330	3.62%	63.48	233.02	169.54
0320	Agricultural Commission	19.00		19.00	2.00%	0.38	1.09	0.71
0330	Mosquito Abatement	3.00		3.00	0.00%	0.00	0.65	0.65
0600	Agricultural Ext Service	2.00		2.00	0.00%	0.00	0.47	0.47
0900	Assessor	39.00	1.00	38.00	2.00%	0.78	3.24	2.46
1210	Auditor-Controller	29.55		29.55	2.00%	0.59	1.15	0.56
1500	Board Of Supervisors	18.00		18.00	0.00%	0.00	0.53	0.63
1600	Commissions	1.50		1.50	0.00%	0.00	0.50	0.50
1810	Administrative Officer	15.30	1.09	14.30	2.00%	0.31	1.68	1.37
1820	Clerk Of The Board	5.00		5.00	0.00%	0.00	0.00	0.00
1830	Economic Dev -Advertising	0.00		0.00	0.00%	0.00	0.00	0.00
2120	Recorder	12.00		12.00	2.00%	0.24	0.29	0.05
2140	Elections	7.00		7.00	2.00%	0.14	0.59	0.46
2400	County Counsel	21.00		21.00	2.00%	0.42	1.94	1.52
2710	District Attorney-Admin	96.25	1.00	95.25	2.50%	2.41	1.50	(0.91)
2720	District Attorney-Operations	74.00		74.00	2.50%	1.85	5.79	3.94
3020	Emergency Services	1.00		1.00	0.00%	0.00	0.00	0.00
3030	Communications	6.00		6.00	0.00%	0.00	1.12	1.12
3040	County Fire Service	1.00		1.00	0.00%	0.00	0.00	0.00
3310	General Services-Admin	10.00		10.00	3.50%	0.35	0.06	(0.29)
3330	Facilities Management	35.00		35.00	3.50%	1.23	4.65	3.42
3340	Purchasing	3.06		3.00	3.50%	0.11	0.00	(0.11)
3601	Health Services-Administration	42.25		42.25	4.50%	1.90	4.22	2.32
3610	Health Services-Medical Clinics	104.95		104.95	4.50%	4.72	12.80	8.08
3620	Health Services-Public Health	140.70		140.70	4.50%	6.33	7.09	0.76
3630	Health Services-Mental Health	165.35	3.75	161.60	4.50%	7.44	17.54	10.10
3640	Health Services-Substance Abuse	13.50		13.50	4.50%	0.61	3.04	2.43
3650	Health Services-Medicruz	21.00		21.00	4.50%	0.95	2.76	1.81
3920	Human Resources Social Servic	446.10	5.50	440.60	3.50%	15.61	72.11	56.50
3922	Human Resources Social Sewic	7.75		7.75	3.50%	0.27	0.00	(0.27)
3930	Veterans Service Office	4.00		4.00	3.50%	0.14	0.41	0.27
3940	Public Guardian	14.00	1.00	13.00	3.50%	0.49	1.18	0.69
4900	Open Space & Cultural Services	45.50		45.50	0.00%	0.00	3.19	3.19
5101	Personnel-Employee Rel	5.50		5.50	2.00%	0.11	0.00	(0.11)
5110	Personnel-Training	7.80		7.80	2.00%	0.16	1.88	1.72
5130	Personnel-Personnel Ser	7.80		7.80	2.00%	0.16	0.68	0.52
5140	Personnel-Admin/Permit	2.00		2.00	2.00%	0.04	0.00	(0.04)
5400	Planning Department	87.75	1.00	86.75	3.50%	3.07	10.18	7.11
5720	Juvenile Hail	31.00		31.00	2.00%	0.62	2.18	1.56
5740	Probation Department	74.00		74.00	3.00%	2.22	3.74	1.52
5770	Care of Court Wards	0.00		0.00	0.00%	0.00	0.00	0.00
5790	Pre-Trial Services	5.00		5.00	0.00%	0.00	0.24	0.24
6610	Sheriff-Coroner	164.50		164.50	3.00%	4.94	11.15	6.21
6620	Detention Facilities	133.00		133.00	0.00%	0.00	11.41	11.41
7300	Treasurer & Tax Collector	17.50		17.50	2.00%	0.35	2.88	2.53
TOTAL GENERAL FUND		1,939.55	14.25	1,925.30	3.66%	58.94	193.93	134.99
3335	Service Center	6.00		6.00	3.50%	0.21	0.41	0.20
3960	Job Training And Partnership	50.00		50.00	3.50%	1.75	9.65	7.90
4210	Information Services-Admin	4.75		4.75	3.50%	0.17	1.26	1.09
4220	Information Services-Telephone	5.00		5.00	3.50%	0.18	0.29	0.11
4230	Duplicating	4.00		4.00	3.50%	0.14	0.00	(0.14)
4240	Data Processing	57.25		57.25	3.50%	2.00	6.71	4.71
5150	Personnel-Risk Management	4.50		4.50	2.00%	0.09	0.12	0.03
5160	Affirmative Action	0.00		0.00	0.00%	0.00	0.00	0.00
6000	Public Works Department	263.50		263.50	0.00%	0.00	18.71	18.71
6101	RDA-Administration	13.00		13.00	0.00%	0.00	1.94	1.94
OTHER COUNTY WIDE		408.00	0.00	408.00	3.14%	4.54	39.09	34.55
TOTAL COUNTY WIDE		2,347.55	14.25	2,333.30	3.62%	63.48	233.02	169.54
PRIOR YEAR		2,404.21						

COUNTY OF SANTA CRUZ GENERAL FUND CONTINGENCIES



REVENUE ANALYSIS

COUNTY OF SANTA CRUZ
GENERAL FUND
RECONCILIATION OF FINAL BUDGET TO MIDYEAR CHANGES-REVENUE
FOR FISCAL QUARTER ENDED MARCH 31, 1999

DESCRIPTION	FINAL BUDGET	MIDYEAR CHANGES	AMENDED FINAL BUDGET
REVENUE			
TAXES	\$40,178,365	\$0	\$40,178,365
LICENSES, PERMITS AND FRANCHISES	5,996,479	(32,500)	5,963,979
FINES, FORFEITURES AND ASSESSMENTS	4,740,675	122,930	4,863,605
USE OF MONEY	5,180,896	0	5,180,896
INTERGOVERNMENTAL REVENUES	116,563,871	2,847,769	119,411,640
CHARGES FOR SERVICES	32,515,231	203,399	32,718,630
MISCELLANEOUS REVENUES	4,223,788	340,852	4,564,640
OTHER FINANCING SOURCES	24,206,649	204,935	24,411,584
OTHER GOVERNMENTAL UNIT	156,511	56,000	212,511
TOTAL REVENUES	<u>\$233,762,465</u>	<u>\$3,743,385</u>	<u>\$237,505,850</u>

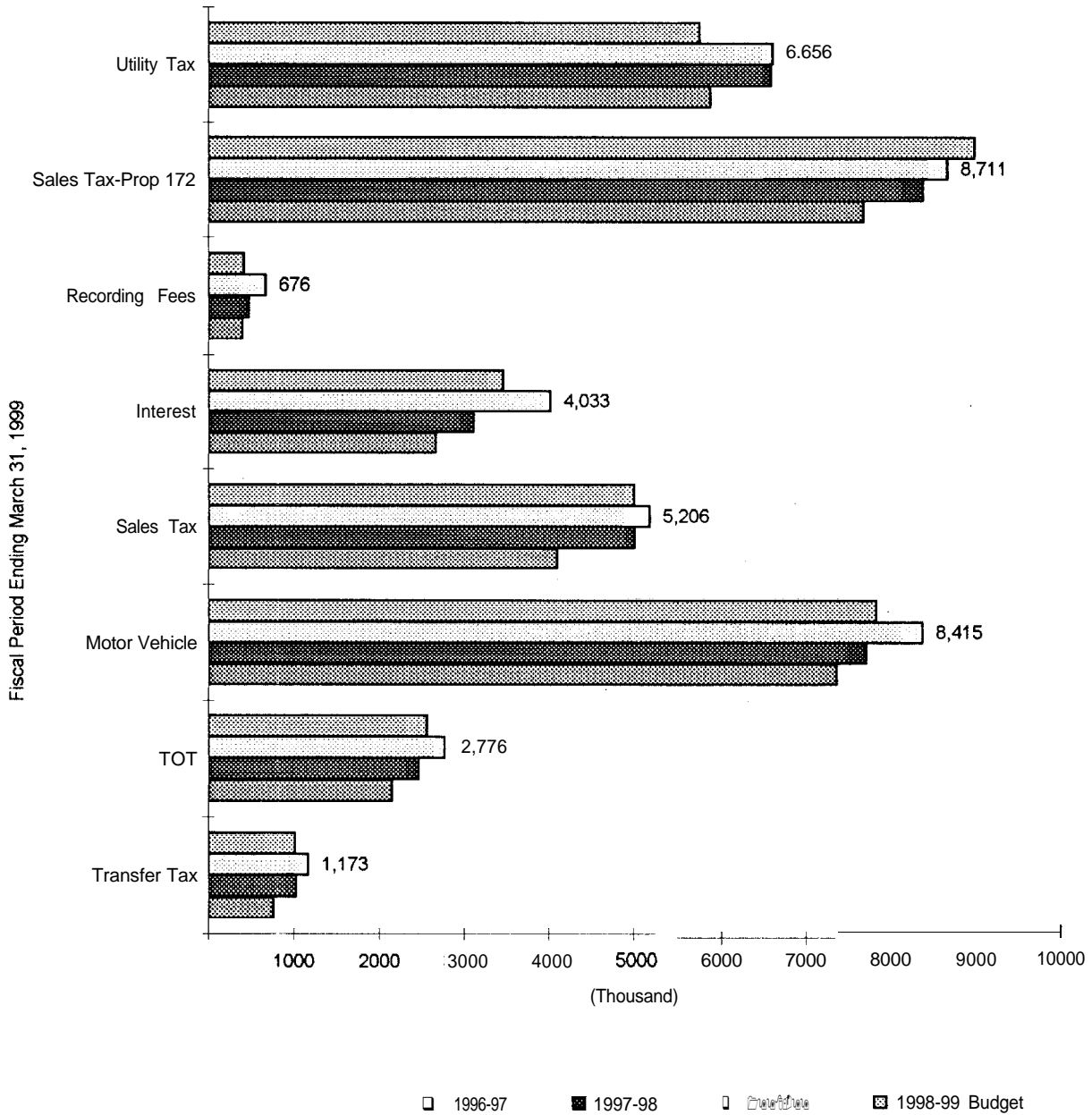
COUNTY OF SANTA CRUZ
 AUDITOR-CONTROLLER
 BUDGET TO REVENUE ANALYSIS-MODIFIED CASH BASIS
 JULY 1, 1998 TO MARCH 31, 1999

INDEX	DESCRIPTION	CURRENT YEAR		% REV	% P/Y
		ESTIMATED REVENUES	REALIZED TO DATE		
		237,505,850.35	130,709,200.66	55.03%	56.39%
103000	AGRICULTURAL COMMISSIONER & WTS & MEAS	928,799.75	794,480.99	85.54%	93.78%
109000	ASSESSOR	1,379,699.00	386,193.74	27.99%	21.95%
120000	AUDITOR-CONTROLLER*	18,373,346.00	13,195,340.55	71.82%	72.48%
131220	REVENUE AUDITOR - GENERAL FUND	43,205,789.00	24,171,992.52	55.95%	53.48%
131215	CERTS / DEBT SERVICE	3,461,978.00	2,692,084.79	77.76%	80.19%
131604	POLICE PROTECTION-OTHER	4,570,000.00	3,427,499.97	75.00%	75.05%
131820	ANIMAL POUND	164,000.00	87,231.75	53.19%	52.01%
131845	LAFCO	0.00	4,052.51	4052.00%	0.00%
161000	COMMISSION	3,307.00	3,002.00	90.78%	90.42%
181000	COUNTY ADMINISTRATIVE OFFICE	556,611.00	248,239.19	44.60%	60.49%
182000	CLERK OF THE BOARD	42,500.00	14,541.69	34.22%	76.48%
190000	PLANT ACQUISITION	500,000.00	405,034.81	81.01%	30.12%
212000	COUNTY CLERK-RECORDER	1,126,080.00	914,673.73	81.23%	60.03%
214000	COUNTY CLERK-ELECTIONS	306,743.00	357,517.68	116.55%	120.37%
242000	COUNTY COUNSEL	718,271.00	378,288.38	52.67%	51.92%
270000	DISTRICT ATTORNEY	9,640,047.00	4,678,919.61	48.54%	47.78%
302100	DISASTER RESPONSE(GSD)	1,224,187.00	591,576.26	48.32%	34.25%
331000	GENERAL SERVICES	529,628.00	378,587.05	71.48%	94.78%
334000	GEN SVCS-CENTRAL PURCHASING	146,357.00	108,364.00	74.04%	86.21%
334200	GEN SVCS-CENTRAL STORES	141,285.00	86,169.00	60.99%	133.91%
360000	HSA ADMINISTRATION**	59,937,351.98	33,106,147.13	55.23%	56.14%
390000	HRA ADMINISTRATION	449,598.00	148,164.00	32.95%	22.54%
392100	SOCIAL SERVICES ADMINISTRATION	37,967,420.00	14,625,353.58	38.52%	41.46%
392200	CATEGORICAL AIDS	16,826,068.00	8,981,405.00	53.38%	53.58%
393000	VETERAN'S SERVICES OFFICER	39,834.00	35,329.42	88.69%	91.45%
394000	PUBLIC GUARDIAN	702,845.00	396,288.40	56.38%	55.63%
395200	COMMUNITY SERVICES	49,640.00	9,640.00	19.42%	100.00%
450000	COURTS	3,777,394.00	2,725,530.64	72.15%	56.49%
491000	PARKS	1,868,645.00	1,038,325.95	55.57%	36.41%
510000	P E R S O N N E L	928,644.00	681,035.96	73.34%	80.84%
540000	PLANNING	4,639,033.00	3,267,285.28	70.43%	62.76%
572000	JUVENILE HALL	774,673.00	467,746.72	60.38%	49.96%
574000	PROBATION	4,202,034.00	2,045,005.29	48.67%	62.14%
577000	CARE OF COURT WARDS	6,000.00	10,321.92	172.03%	107.14%
590000	PUBLIC DEFENDER	288,000.00	164,082.66	56.97%	63.64%
621900	DPW REAL PROPERTY	65,000.00	63,171.00	97.19%	99.93%
621901	DPW SURVEYOR	287,800.00	122,574.00	42.59%	56.87%
621902	DPW LIVE OAK PARKING	45,000.00	22,402.00	49.78%	33.13%
621903	DPW CONSTRUCTION INSPECTION	40,000.00	30,109.00	75.27%	52.60%
621904	DPW ENGIN DEVELOPMENT PLAN REVIEW	69,500.00	56,499.00	81.29%	91.10%
660000	SHERIFF	8,416,072.62	5,020,346.45	59.65%	72.43%
662000	DETENTION	8,241,269.00	4,437,478.34	53.84%	55.02%
730000	TREASURER-TAX COLLECTOR	865,401.00	331,168.70	38.27%	45.19%
		237,505,850	130,709,201	55.03%	56.39%

*Includes Major General Purpose Revenues

**HSA Includes some revenues on an accrual basis

**COUNTY OF SANTA CRUZ
Major Revenue Trends - Cash Basis***



Year to Date Revenue Through March 31, 1999

- This graph shows comparative revenue collections for the major general purpose revenues, Property taxes are excluded because under the Teeter plan 100% will be realized

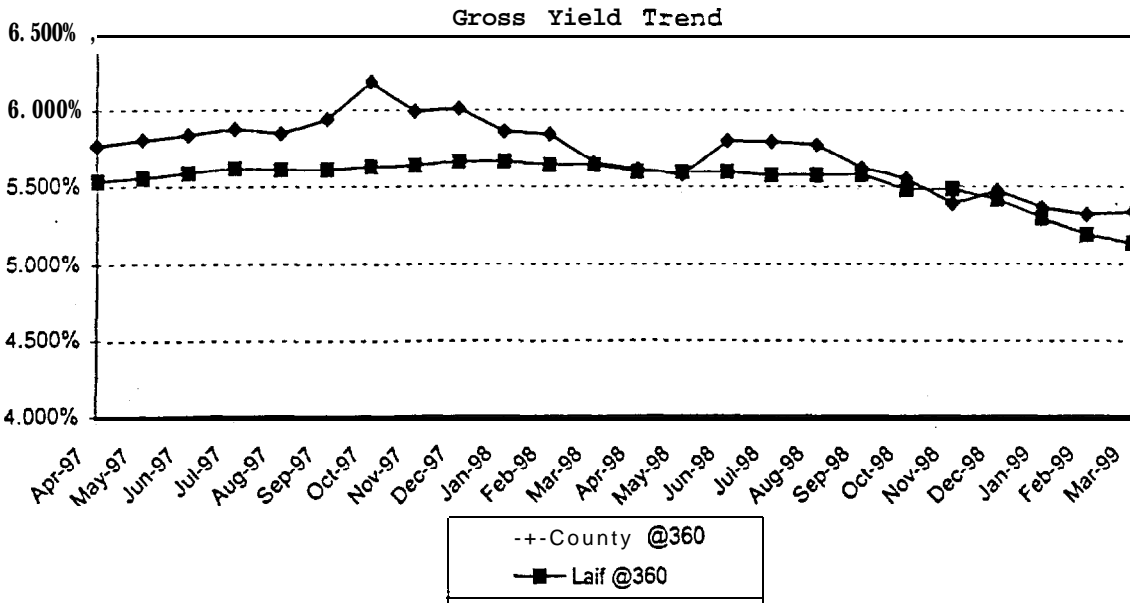
COMPARISON OF PRIOR YEAR REVENUE
TO CURRENT YEAR REVENUE
THROUGH THIRD QUARTER
FISCAL YEARS 1997-98 AND 1998-99

FISCAL YEAR		QUARTERLY BUDGET ESTIMATE	ACTUAL	OVER (UNDER) BUDGET	3ND QUARTER PRIOR YEAR THROUGH MAR
98-99	Transfer Tax	1,019,565	1,172,750	153,185	1,033,498
98-99	Transient Occup Tax	2,568,600	2,775,513	206,913	2,470,867
98-99	Motor Vehicle	7,873,113	8,415,375	542,262	7,761,848
98-99	Sales Tax	5,025,119	5,205,679	180,559	5,030,991
98-99	Interest	3,474,916	4,032,791	557,875	3,131,532
98-99	Recording Fees	421,061	675,624	254,563	479,758
98-99	Sales Tax-Prop 172	9,029,602	8,711,212	(318,390)	8,422,989
98-99	Utility Tax	5,788,541	6,655,848	867,307	6,633,065
		<u>35,200,518</u>	<u>37,644,792</u>	<u>2,444,273</u>	<u>34,964,549</u>

Investment Portfolio Yield at a Glance

Gross Yield History

	County @360	Laif @360	Laif @365
Apr-97	5.770%	5.535%	5.612%
May-97	5.806%	5.557%	5.634%
Jun-97	5.839%	5.589%	5.667%
Jul-97	5.880%	5.620%	5.697%
Aug-97	5.850%	5.610%	5.690%
Sep-97	5.940%	5.610%	5.690%
Oct-97	6.180%	5.629%	5.707%
Nov-97	5.990%	5.637%	5.715%
Dec-97	6.010%	5.665%	5.744%
Jan-98	5.861%	5.663%	5.742%
Feb-98	5.842%	5.642%	5.720%
Mar-98	5.654%	5.642%	5.720%
Apr-98	5.614%	5.594%	5.672%
May-98	5.578%	5.595%	5.673%
Jun-98	5.800%	5.595%	5.673%
Jul-98	5.795%	5.575%	5.652%
Aug-98	5.774%	5.575%	5.652%
Sep-98	5.623%	5.575%	5.652%
Oct-98	5.552%	5.481%	5.557%
Nov-98	5.389%	5.481%	5.557%
Dec-98	5.472%	5.417%	5.492%
Jan-99	5.365%	5.300%	5.374%
Feb-99	5.320%	5.193%	5.265%
Mar-99	5.339%	5.139%	5.210%



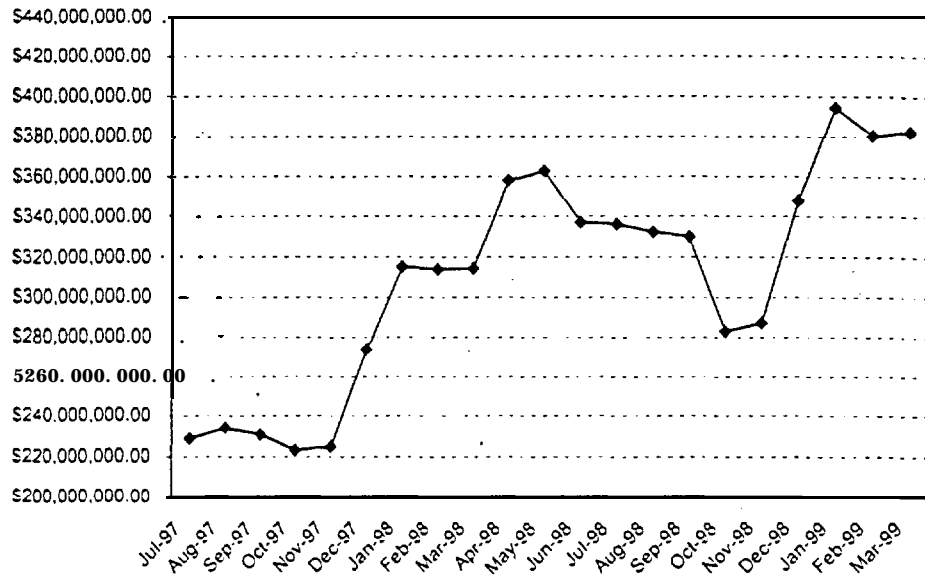
Balance Trend

Portfolio Structure as of March 31, 1999

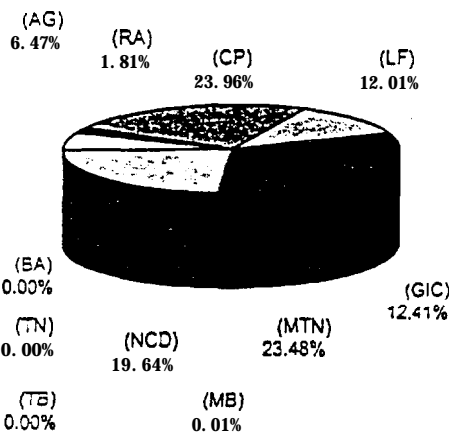
Monthly Balance History

Jul-97	\$	228,996,370.82
Aug-97	\$	234,070,258.56
Sep-97	\$	230,920,606.72
Ott-97	\$	223,241,342.95
Nov-97	\$	225,034,856.93
Dee-97	\$	273,690,370.82
Jan-98	\$	315,056,582.22
Feb-98	\$	313,949,781.47
Mar-98	\$	314,271,357.95
Apr-98	\$	357,858,639.59
May-98	\$	362,749,657.11
Jun-98	\$	336,847,221.19
Jul-98	\$	336,058,406.42
Aug-98	\$	332,067,606.59
Sep-98	\$	329,774,976.67
Ott-98	\$	283,220,934.31
Nov-98	\$	287,141,481.55
Dee-98	\$	347,638,956.60
Jan-99	\$	394,130,306.98
Feb-99	\$	380,256,599.65
Mar-99	\$	382,419,518.25

Monthly Balance Trend



Breakdown of Investments



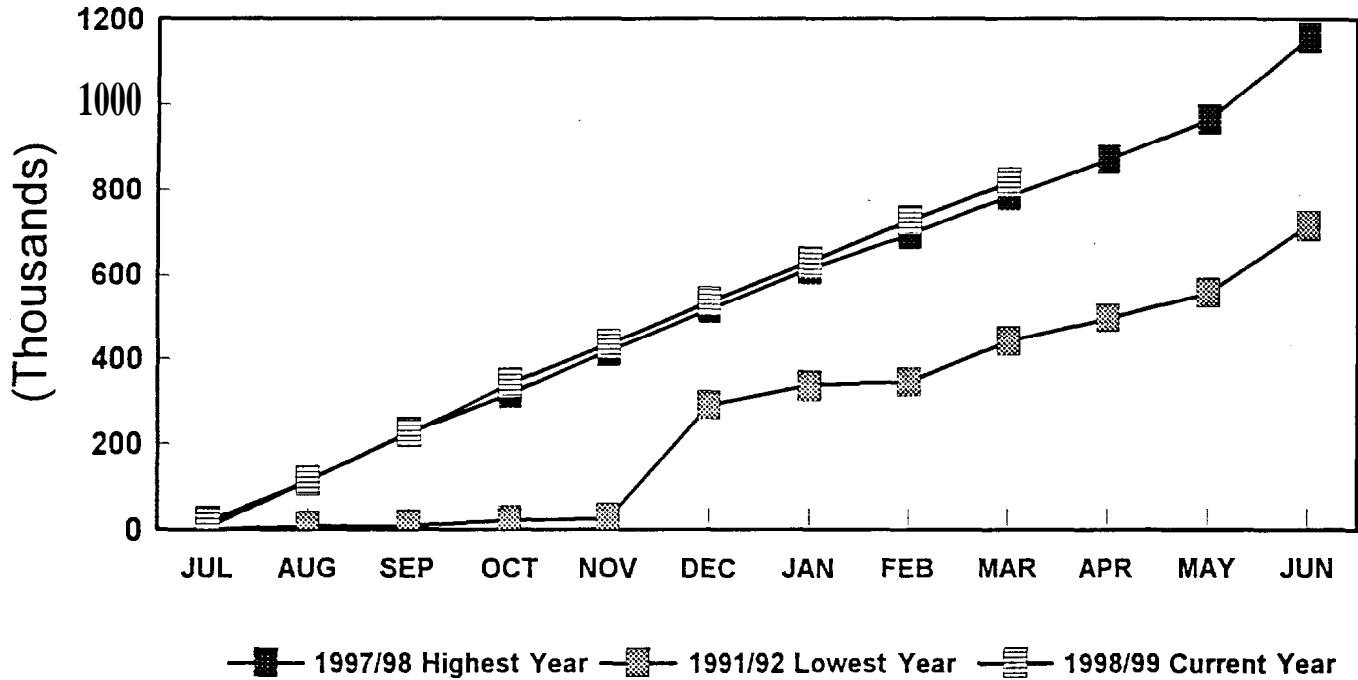
Treasury Bills	(TB)	0.00%
Treasury Notes	(TN)	0.00%
U.S. Agencies	(AG)	6.47%
Bankers Acceptance	(BA)	0.00%
Repurchase Agreem	(RA)	1.81%
Commercial Paper	(CP)	23.96%
Muni Bond	(MB)	0.01%
LAIF	(LF)	12.01%
GIC Managed Pool A	(GIC)	12.41%
Negotiable CD	(NC)	19.84%
Medium Term Note	(MT)	23.48%

County of Santa Cruz Revenue

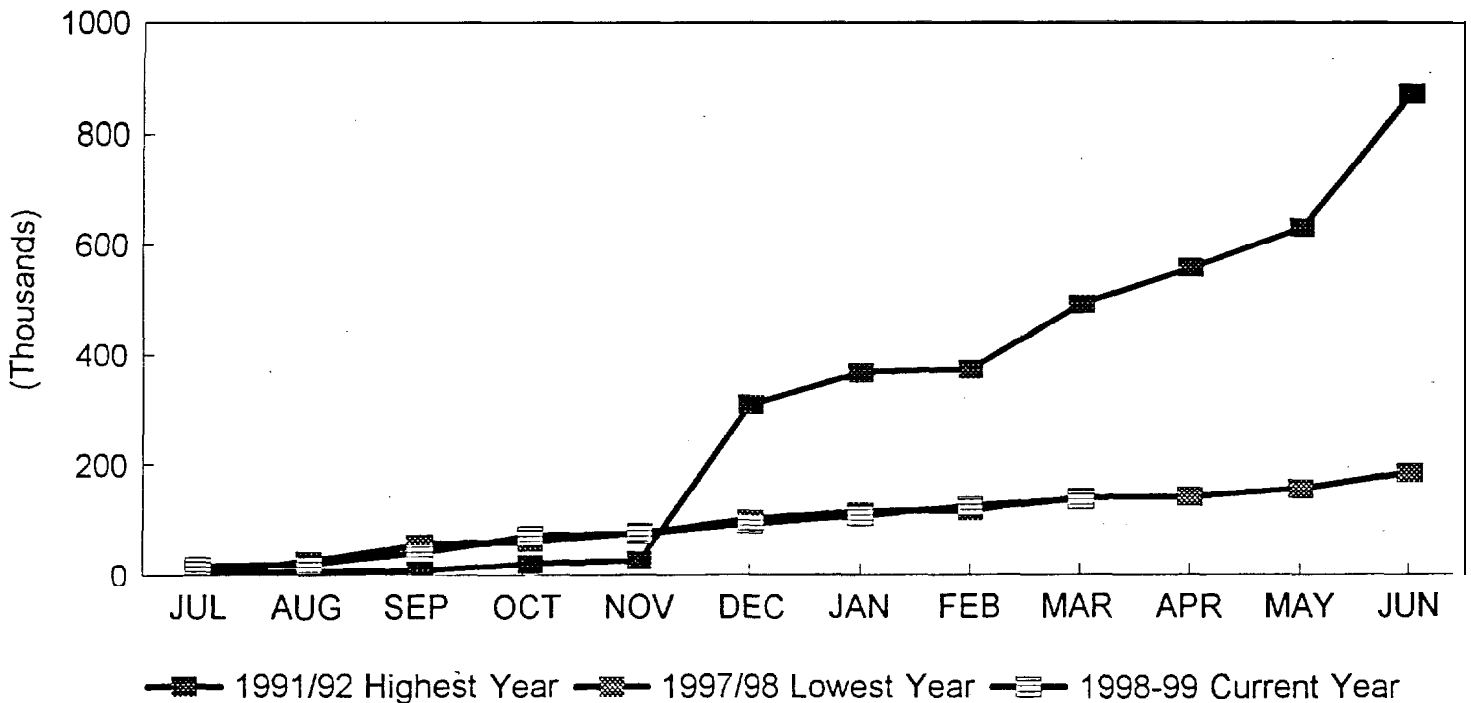
SANTACRUZCOUNTY

0175

Criminal Justice Facility Fund



COURTHOUSE TEMPORARY CONSTRUCTION FUND



\$2.50 from each parking violation is earmarked for the Courthouse Temporary Construction Fund and the Criminal Justice Facility Fund. Because these funds are very important to financing of Capital Projects and Sheriff Operations the preceding graphs are presented to monitor cash receipts. (Graph highest and lowest years covers the last ten years.)

CASH FLOW ANALYSIS

COUNTY OF SANTA CRUZ
 GENERAL FUND AND TRANS BORROWING
 STATEMENT OF CASH POSITION
 FOR FISCAL QUARTER ENDING MARCH 31, 1999

GENERAL FUND:	ACTUAL
Beginning Cash Balance 7-1 -98	\$ 3,266,550
Revenues/Receipts	151,473,263
Disbursements	167,591,995
Ending Cash Balance	\$ <u>(12,852,182)</u>
TRANS USES:	
Trans Beginning Balance	\$ 47,998,031
Trans with Fiscal Agent	47,998,031
Transfers In/Out (All Funds)	(22,851,199)
Loans to General Fund (Net)	(12,852,182)
Ending Balance March 31, 1999	\$ <u>12,294,650</u>
Ending Balance March 31, 1998	\$ <u>11,260,471</u>
Difference	\$ <u>1,034,179</u>
Explanation of Difference	\$ 1,034,179
Decrease in Beginning Cash	10,277,668
Increase in Revenues	(17,998,887)
Increase in Disbursements	10,444,157
Increase in Trans Borrowing	(1,513,031)
Increase in Interfund Borrowing	(2,244,086)
	\$ <u><u>0</u></u>

61

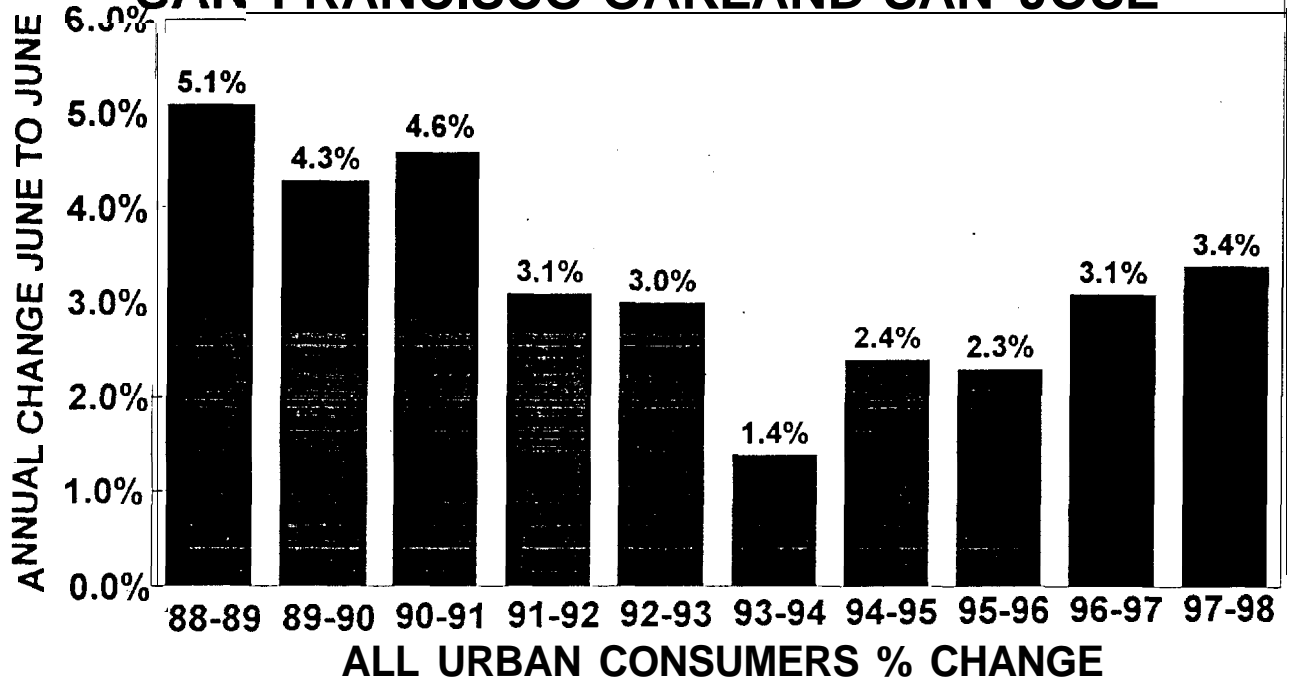
COUNTY OF SANTA CRUZ
 GENERAL FUND CASH FLOW SUMMARY
 ACTUAL THROUGH MARCH FOR FISCAL YEAR 1998-99

	July	August	September	October	November	December	January	February	March		
BEGINNING BALANCE	\$3,266,549.79	\$32,468,934.50	\$34,898,786.98	\$31,516,770.47	\$29,930,484.87	\$29,040,529.62	\$35,664,844.4	6	\$31,855,467.63	\$35,183,197.76	\$49,799.16
RECEIPTS											
Property and other Taxes 01	1,271,445.44	1,412,956.83	1,431,811.70	1,641,631.01	1,443,352.94	13,244,134.36	780,175.25	1,449,941.83	2,122,549.80	24,797,999.16	
Licenses and Permits 05	605,074.88	426,184.82	703,025.27	630,349.15	258,135.66	440,144.41	446,171.41	421,384.68	900,530.44	4,831,000.72	
Fines, Forfeitures and Penalties 07	69,370.94	289,595.39	562,176.66	314,195.69	345,578.12	600,338.76	262,325.71	252,220.44	445,013.58	3,140,815.29	
Use of Money and Property 10	168,576.62	219,847.30	191,733.91	1,345,133.56	65,690.47	200,672.72	475,881.52	331,348.37	321,025.12	3,319,909.99	
Aid from Other Governmental Agencies 15	(2,725,321.43)	12,897,587.11	8,006,950.96	4,468,029.63	9,131,653.50	10,815,439.51	6,345,140.68	12,388,181.96	11,044,210.57	72,371,872.49	
Charges for Current Services 19	3,604,766.00	1,527,831.19	1,745,293.69	1,775,680.93	1,859,338.48	1,757,527.59	2,578,269.01	2,758,958.42	1,760,596.59	19,368,261.90	
Other Revenues 23. 25. 27	38,586.55	3,667,004.52	2,091,321.45	1,703,558.90	2,820,033.40	2,076,682.64	3,137,031.23	4,406,681.11	2,132,426.24	22,073,326.04	
ADJUSTMENTS	(2,329,970.86)	882,210.91	(1,555,808.85)	1,915,146.71	786,153.24	939,444.68	547,391.98	117,176.42	268,333.49	1,570,077.72	
TOTAL RECEIPTS	\$702,528.14	\$21,323,218.07	\$13,176,504.79	\$13,793,725.58	\$16,709,935.81	\$30,074,384.67	\$14,572,387.19	\$22,125,893.23	\$18,994,685.83	\$151,473,263.31	
DISBURSEMENTS											
Salaries and Benefits 30	11,115,523.37	7,552,849.24	7,609,746.72	7,646,917.72	7,784,200.23	12,468,875.55	8,194,112.45	8,432,507.71	7,917,469.24	78,722,202.23	
Services and Supplies 40	3,931,294.12	5,019,474.41	5,548,116.74	5,441,922.69	4,624,320.96	5,188,917.27	5,189,478.37	5,219,273.73	5,560,846.34	45,723,644.63	
Other Charges 50	4,045,404.95	4,729,655.19	2,425,829.56	3,303,252.50	3,749,814.54	7,721,400.51	3,665,894.06	5,016,721.21	5,197,158.55	39,855,131.07	
Capital Outlay and Fixed Assets 60	95,684.33	49,402.07	25,054.93	142,687.08	26,448.23	415,018.03	35,179.69	155,181.16	21,495.56	966,151.08	
Other Financing 70	0.00	2,044,262.14	1,206,952.92	809,274.26	1,593,325.72	1,143,868.36	2,475,698.51	1,207,968.80	606,379.34	11,087,730.05	
Intrafund Transfers so	310,268.21	(502,277.46)	(257,179.57)	(1964,043.07)	(178,218.62)	(3,488,009.89)	(1,178,599.06)	(1,233,489.51)	(271,314.92)	(8,762,863.89)	
TOTAL DISBURSEMENTS	\$ 19,498,174.98	\$18,893,365.59	\$16,558,521.30	\$15,380,011.18	\$17,599,891.06	\$23,450,069.83	\$18,381,764.02	\$18,798,163.10	\$19,032,034.11	\$167,591,995.17	
NET CASH PROVIDED (USED) BY ACTIVITIES	(\$15,529,097.05)	\$34,898,786.98	\$31,516,770.47	\$29,930,484.87	\$29,040,529.62	\$35,664,844.46	\$31,855,467.63	\$35,183,197.76	\$35,145,849.48	(\$12,852,182.07)	
TRANS	\$47,998,031.55									47,998,031.55	
ENDING BALANCE	\$32,468,934.50	\$34,898,786.98	\$31,516,770.47	\$29,930,484.87	\$29,040,529.62	\$35,664,844.46	\$31,855,467.63	\$35,183,197.76	\$35,145,849.48	\$35,145,849.48	
FUNDS WITH NEGATIVE CASH BALANCES B	0.00	23,782,766.76	22,391,474.60	27,301,943.47	30,250,092.92	33,066,114.82	31,751,885.51	25,084,883.21	21,001,149.34	0.00	
LOAN PAYOFFS	8,741,582.59	21,198,169.32	15,001,005.15	18,750,689.42	21,452,735.11	32,108,778.06	23,416,276.15	26,868,274.29	18,253,460.56	185,790,970.65	
LOANS	32,524,349.35	19,806,877.16	19,911,474.02	21,698,838.87	24,268,757.01	30,794,548.75	16,749,273.85	22,784,540.42	20,103,509.81	208,642,169.24	
FUNDS WITH NEGATIVE CASH BALANCES E	\$23,782,766.76	\$22,391,474.60	\$27,301,943.47	\$30,250,092.92	\$33,066,114.82	\$31,751,885.51	\$25,084,883.21	\$21,001,149.34	\$22,851,198.59	\$22,851,198.59	
ACTUAL GENERAL FUND CASH POSITION	\$8,686,167.74	\$12,507,312.38	\$4,214,827.00	(\$319,608.05)	(\$4,025,585.20)	\$3,912,958.95	\$6,770,584.42	\$14,182,048.42	\$12,294,650.89	\$12,294,650.89	
TREASURER'S INTRAFUND BORROWINGS (I	0.00	0.00	0.00	319,608.05	4,025,585.20	0.00	0.00	0.00	0.00	0.00	

178

OTHER ANALYSIS

CONSUMER PRICE INDEXES SAN FRANCISCO-OAKLAND-SAN JOSE



County of Santa Cruz
Statistical Data
Period Ending March 31, 1999

DEPT REF		3RD QUARTER DATA			YTD DATA		
		Jan- March 1999	Jan- March 1998	% Change	Throuah March 1999	Through March 1998	% Change
UNEMPLOY- MENT RATE	Unemployment Rate California (Not Seasonally Adjusted) County (Not Seasonally Adjusted)	(1)			5.80%	6.10%	-5%
					9.20%	9.80%	-6%
TREAS/ TX COLL	Tax Collections Secured Unsecured				68.32%	70.91%	-4%
					42.75%	39.62%	8%
RECORD	Number of Recordings Property Non-Property Total Average Recordings				77,498	55,006	41%
					27,119	18,400	47%
					1,093	1,849	-41%
					28,212	20,249	39%
HRA	Welfare Case Load Temporary Assistance for Needy Families Foster Care General Assistance Food Stamps Medi-Cal	(2)			22,163	27,312	-19%
					7,239	8,797	-18%
					1,029	1,281	-20%
					480	498	-4%
					4,578	13,823	-67%
					24,998	23,498	6%
HSA	Total Number of Clinic Visits SC/WAT PNATAL SC GMC WAT GMC MH ADMIN Total Clinic Visits	(3)			43,692	45,067	-3%
					85	193	-56%
					2,375	2,982	-20%
					2,653	2,714	-2%
					9,000	9,000	0%
					14,113	14,889	-5%

(1)Unemployment Rate as of March 1999 & 1998

(2)March 1999 Welfare Case Load are Estimates

(3)March 1999 Clinic Visits are Estimates

County of Santa Cruz
 Statistical Data
 Period Ending March 31, 1999

DEPT REF	COURT/ DISTRICT ATTY	3RD QUARTER DATA			YTD DATA		
		Jan- March 1999	Jan- March 1998	% Change	Through March 1999	Through March 1998	% Change
	Number of Court Filings/District Atty (1)						
	Felonies						
	New Fillings	477	666	-28%	1,706	1,931	-12%
	Probation Felony Viols	n/a	n/a		n/a	n/a	
	Misdemeanors						
	New Fillings	1,842	2,010	-8%	5,996	6,460	-7%
	Probation Felony Viols	n/a	n/a		n/a	n/a	
	Juvenile Delinquencies						
	New Fillings	110	162	-32%	324	511	-37%
	Probation Felony Viols	n/a	n/a		n/a	n/a	
	Juvenile Dependencies	35	87	-60%	153	211	-27%
	Small Claims Filings	413	556	-26%	1,333	1,645	-19%
	Civil Filings	437	740	-41%	1,526	1,880	-19%
		850	1,296	-34%	2,859	3,525	-19%
	Number of Quarterly Public Defender Cases						
	Felonies						
	New Appointments	390	485	-20%	1,263	1,485	-15%
	Probation Felony Viols	278	223	25%	794	785	1%
	Misdemeanors						
	New Appointments	1,110	1,344	-17%	3,715	3,958	-6%
	Probation Misd Viols	549	557	-1%	1,844	1,605	15%
	Juveniles						
	New Appointments	237	159	49%	610	704	-13%
	Probation Viols (inc above)						
	Other (inc. juv depts, guardianships, & etc.)	255	286	-11%	785	747	5%
		2,819	3,054	-8%	9,011	9,284	-3%
	Daily Number of Inmates/YTD Inmate Days						
	Main Jail	986	1,186	-17%	3,214	3,445	-7%
	Medium Jail	172	142	21%	450	416	8%
	Jail Farm	525	540	-3%	1,518	1,471	3%
	Blaine Street	99	101	-2%	283	269	5%
	Daily Number of Inmates/YTD Inmate Days	1,782	1,969	-9%	5,465	5,601	-2%
	CAMP Helicopter Flight Time-Budget				60	60	
	-Actual				28	41.5	

(1) Courts do not include Probation Violations
 N/A Information not available

County of Santa Cruz
Statistical Data
Period Ending March 31, 1999

DEPT REF		3RD QUARTER DATA			
		Jan - March 1999	Jan - March 1999		
JUV HALL	Juvenile Hall Population	(1)	Boys	Girls	Total
	Population in custody at start of time period		30	13	43
	Admitted During Time Period		285	105	390
	Released During Time Period		282	107	389
	Population in custody at end of time period		33	11	44
	Average Daily Attendance		35.3	12.0	47.3
	Average Length of Stay		12.5	11.8	12.2
	Range of Stay		I-287	I-112	I-287
	Range of Age		12-21	13-19	12-21
	Number of "In-County" Residents Received		267	102	369
	Number of "Out-of-County" Residents Received		18	3	21
	Percentage from out of county		6.3%	2.9%	5.4%
	Total Child Care Days		3,193	1,089	4,282
	Total Court Commitments Admitted		35	7	42
	Total Court Commitments Released		29	6	35
	Total Child Care Days for Released Court Commit		243	19	262
	Total Intake to Date March 1999		285	105	390
	Total Intake to Date March 1998		301	69	370
	Net Change		(16)	36	20
	Redwoods Program				
	Average Daily Attendance		10.5	5.2	15.7
	Child Care Days		940	463	1,403