



County of Santa Cruz

PARKS, OPEN SPACE & CULTURAL SERVICES

979 17 th AVENUE, SANTA CRUZ, CA 95062

(831) 454-7900 FAX: (831) 454-7940 TDD: (831) 454-7978

BARRY C. SAMUEL, DIRECTOR

March 23, 2000

AGENDA: April 11, 2000

BOARD OF SUPERVISORS

County of Santa Cruz

701 Ocean Street

Santa Cruz, CA 95060

SUBJECT: OFFERS OF DEDICATION FOR EAST CLIFF DRIVE

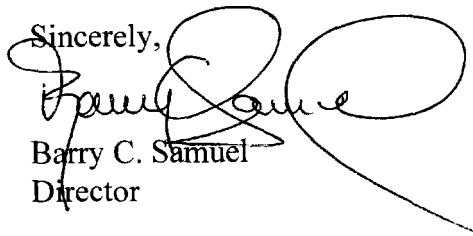
Dear Members of the Board:

The County Department of Public Works has applied to the State Coastal Conservancy for a grant of \$75,000 for the construction of a bicycle and pedestrian pathway along East Cliff Drive. The Coastal Conservancy is requiring the County to accept six Offers to Dedicate (OTD's) in order to be eligible to receive the grant (see Exhibit 1). These OTD's are designed to protect existing public shoreline access in the area.

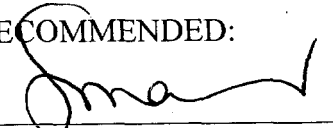
It is therefore RECOMMENDED that your Board take the following action:

1. Adopt the attached resolution accepting the six offers of dedication listed on Exhibit 1; and
2. Direct the Clerk of the Board of Supervisors to have this resolution recorded by the County Recorder.

Sincerely,


Barry C. Samuel
Director

RECOMMENDED:


SUSAN A. MAURIELLO
County Administrative Officer

Attachments: Exhibit 1, OTD's, Resolution

cc: CAO, Auditor-Controller, County Counsel, Parks, Real Property

The Mission of the Santa Cruz County Department of Parks, Open Space and Cultural Services is to provide safe, well designed and maintained parks and a wide variety of recreational and cultural opportunities for our diverse community



Barry Samuel
Director
Parks, **Open Space** and Cultural Services
County of Santa Cruz
979 17th Avenue
Santa Cruz, CA 95062

RE: Coastal Conservancy Grant for East Cliff Drive Accessway (#99-018)

Dear Mr. Samuel:

State Conservancy Grant Agreement (#99-018) provides \$75,000 in Conservancy **funds** to the County of Santa Cruz for the construction of a bicycle and pedestrian pathway along East Cliff Drive between 32nd and 41st Avenues. A condition of this agreement requires the County to accept **several** Offers-To-Dedicate public access easements ("OTDs") in the Live Oak area (see, attached list) for the purpose of protecting existing public shoreline access in the area. Following the County's acceptance of the **OTDs**, Conservancy staff **will** facilitate the **disbursement** of the grant **funds as** they are needed to construct the proposed improvements on East Cliff Drive.

An additional 540,000 in grant **funds** approved by the Conservancy in April 1999 is now available to the County for the reconstruction of the beach access stairway at the **end of 26th** Avenue once the outstanding **issues associated** with providing adequate public parking in the that area are **resolved**. Conservancy staff looks forward to working with the County to resolve these **issues** so that these funds can be directed to their intended purpose.

Sincerely,

Timothy Duff
Project **Manager**, Central Coast Region
State Coastal Conservancy

Cc **Linda** Locklin, Access Program Manager, Coastal Commission

1330 Broadway, 11th Floor
Oakland, California 94612-2530
510-286-1015 Fax: 510-286-0470

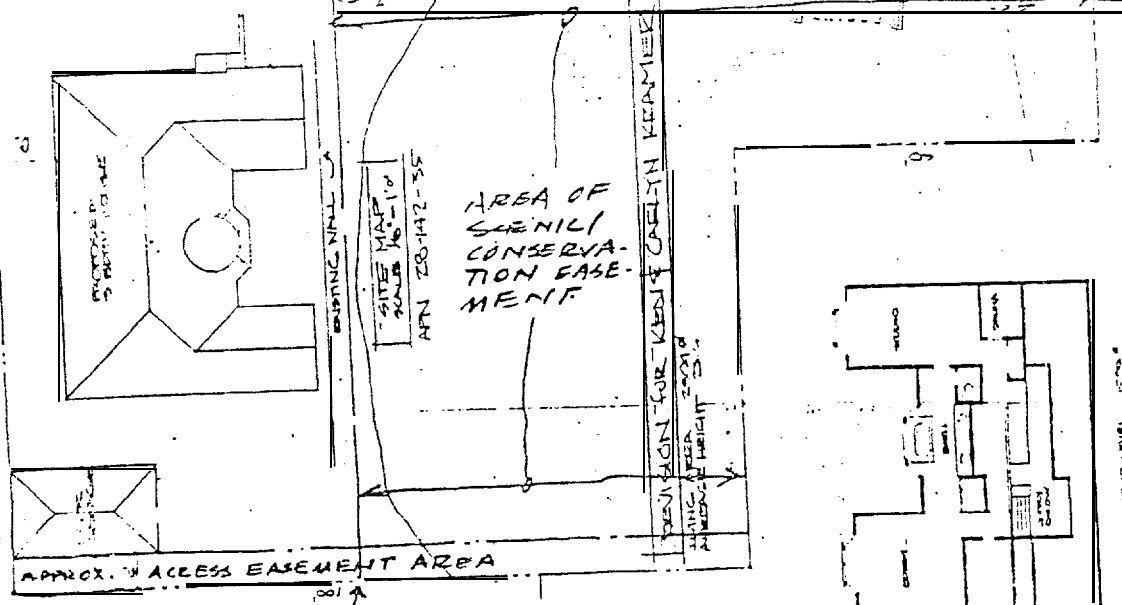
C a l i f o r n i a S t a t e C o a s t a l C o n s e r v a n c y

Exhibit 1

0209

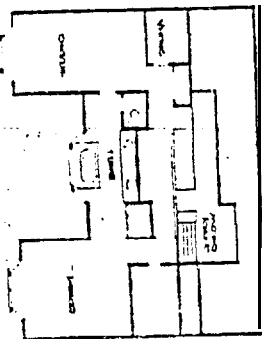
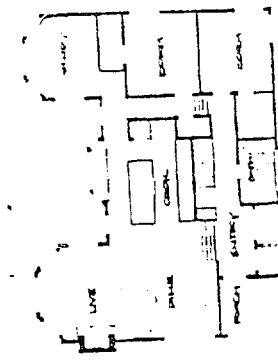
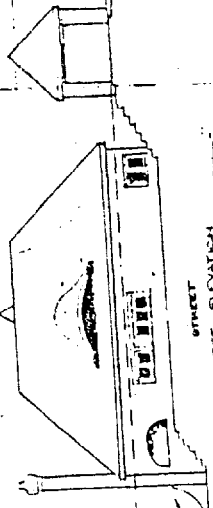
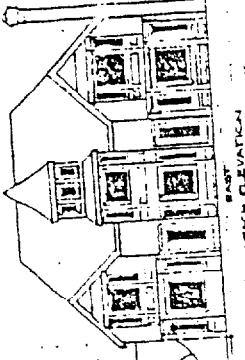
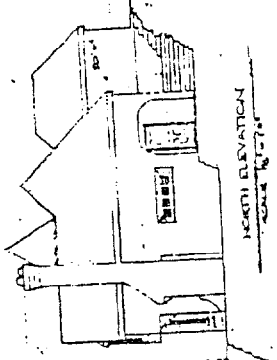
#	APN	Address	Type	Book	Recorded	Page
1	028-142-35	150 13 th Ave, Live Oak	5 foot wide strip of land	3302	3/9/81	620
2	028-233-21	102 24 th Ave, Live Oak	toe of seawall to mean high tide	3667	12/30/83	266
3	028-234-09	end of 26 th Ave, Live Oak	toe of riprap to mean high tide	3505	11/23/82	519
4	028-242-11	2-2707 East Cliff Drive, Live Oak	toe of riprap to mean high tide	3599	7/22/83	585
5	028-242-18	2-2628 East Cliff Drive, Live Oak	toe of seawall to mean high tide	4350	7/5/88	769
6	032-242-09	3054 Pleasure Point Dr., Live Oak	toe of seawall to mean high tide	3059	7/18/85	393

0210



LINE UP WITH
BASE OF EXISTING
WALL.

EXHIBIT "A"
(see condition 3)

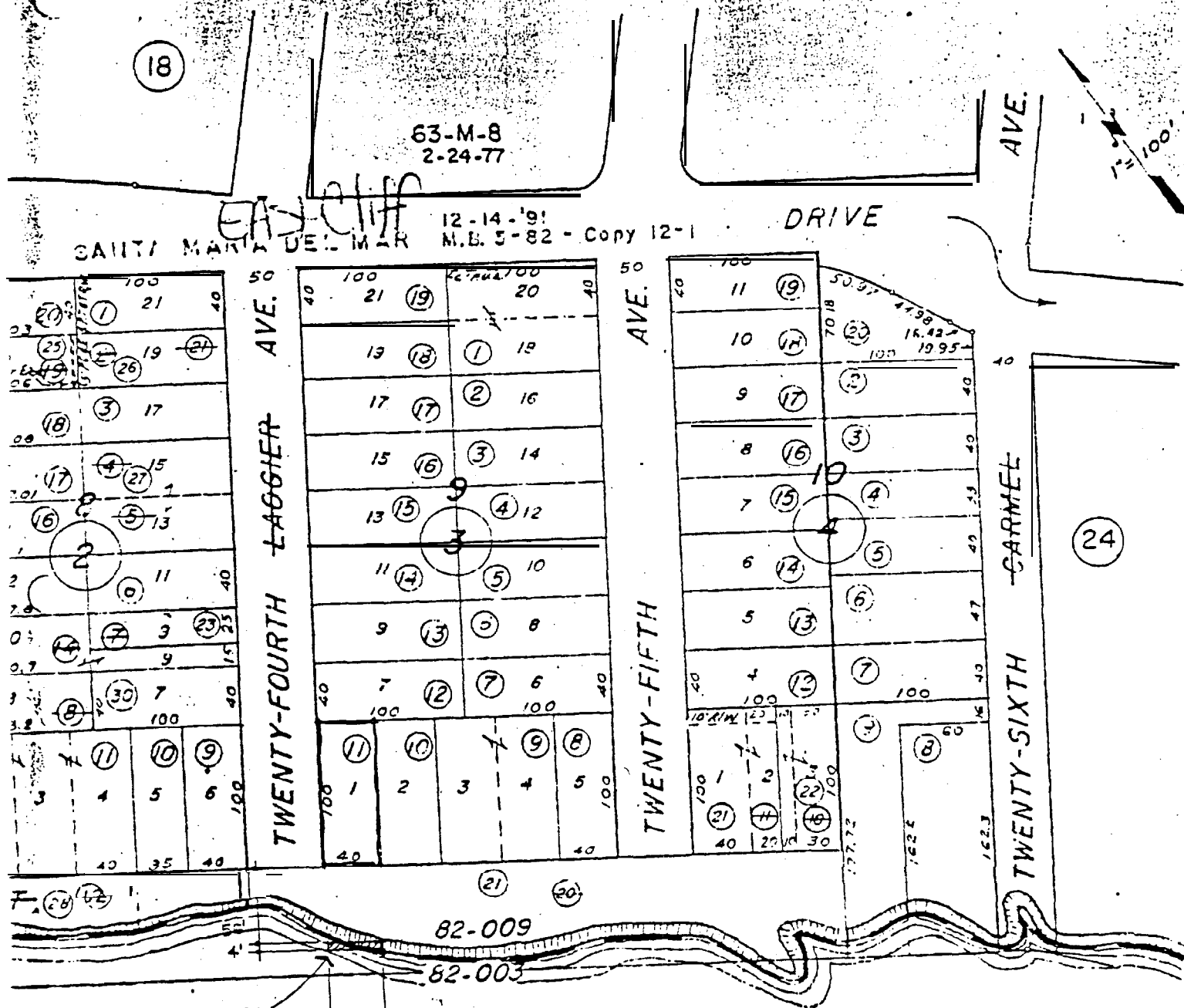


P-80-236
REVISED
PLANS

ROYO DEL ROJO BOOK 3667 PAGE 289
M.C.B. & M. (PROJECTED)

Tax Area Code
82-002
82-003
82-009

28-23

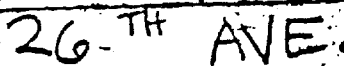
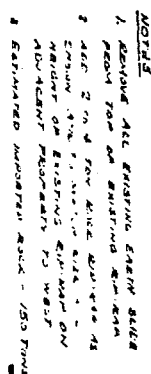


RECEIVED OCT 21 1982

Note - Assessor's Parcel Block B
Lot Numbers Shown in Circles

Assessor's Map No. 28-23
County of Santa Cruz, 45
June 1950

Exhibit



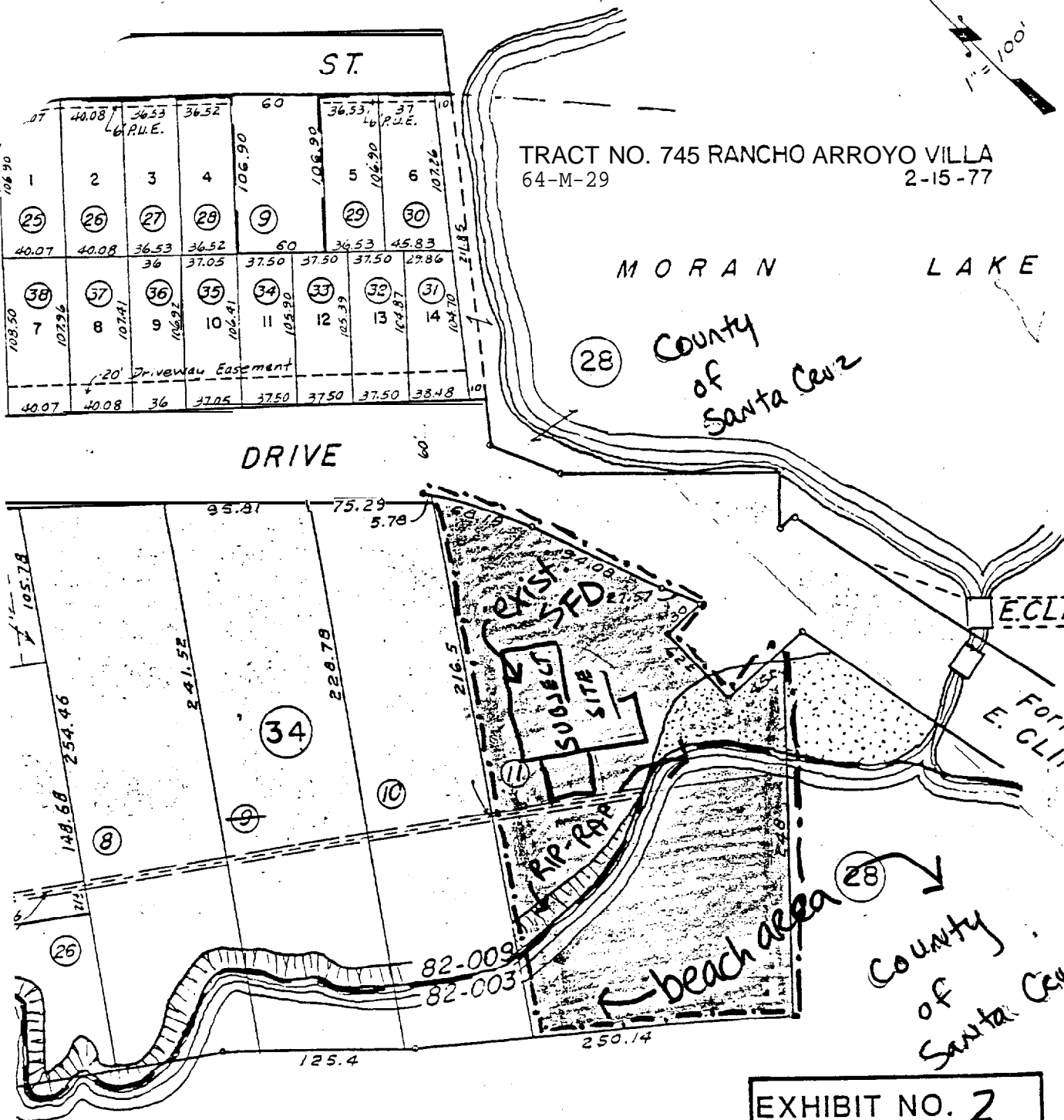
PROJECTED

BOOK 3599 PAGE 601 Tax Assessor's Code


28-24 OTD #4

82-001
82-003
82-009

0213



1 OF MONTEREY

EXHIBIT NO. 2
APPLICATION NO.
3-83-67
Parcel Map
 California Coastal Commission

Note - Assessor's Parcel Block 8
Lot Numbers Shown in Circles

Assessor's Map No. 28-24
County of Santa Cruz, Calif.
June 1950

45

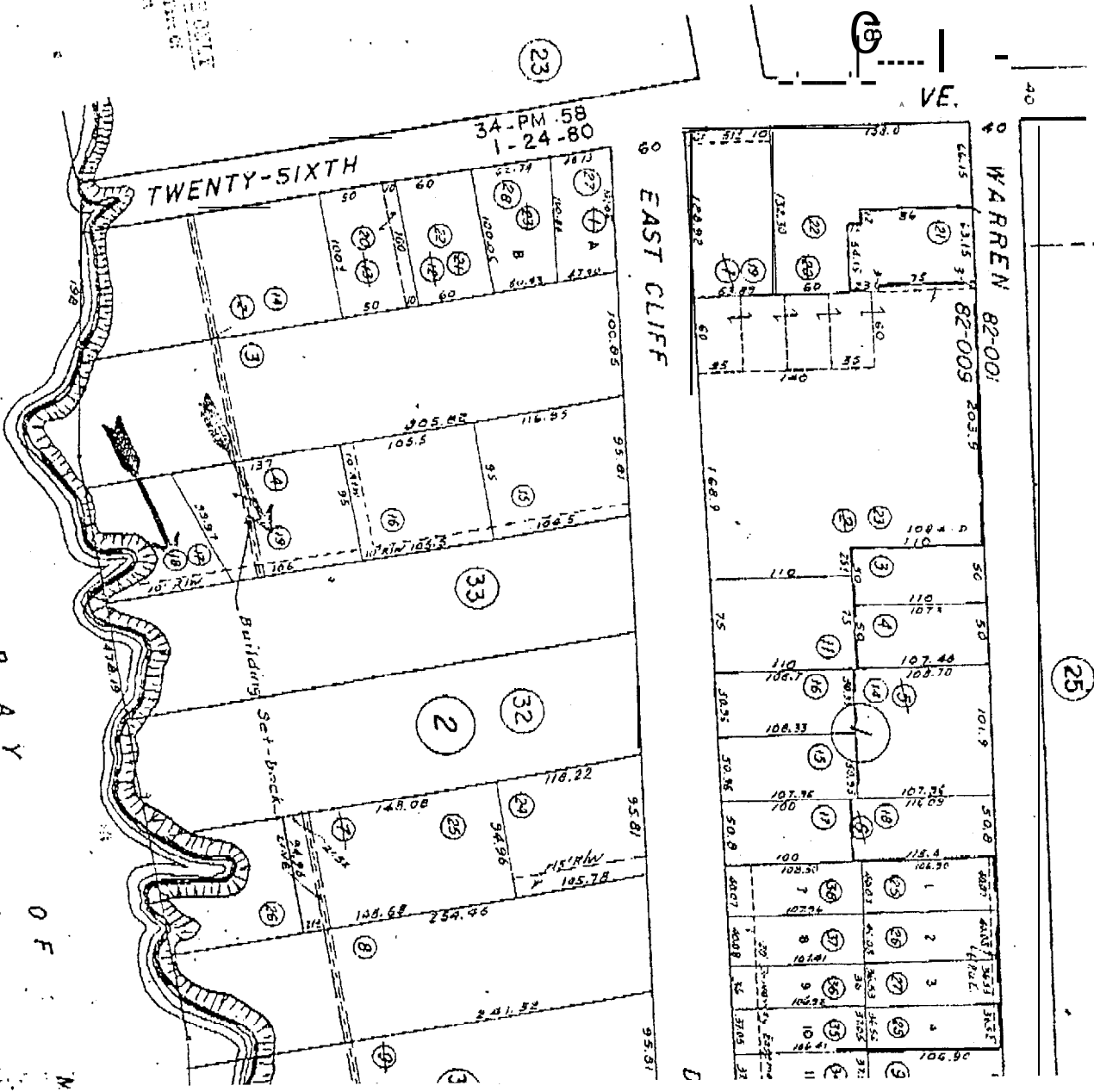
1003 W.N. 24, 1960
FEB 25 '68 R.F.
1043/60 U.F.
2-24-74 R.F.
2-24-74 A.S.T.
4-27-78 J.M.
4-23-79 J.M.
4-14-80 J.M.
10-16-80 A.S.T. (Remove 50%)

FILE IN
LAND MAPS
SECTION 21

0214

AX PURPOSES ONLY

RANCHO ARROYO DEL RO
POR S.W. 1/4 SEC. 21, T.11S., R.1W. M.D.B.M. 1



O DEL RODEO
D. B. & M. PROJECTED.

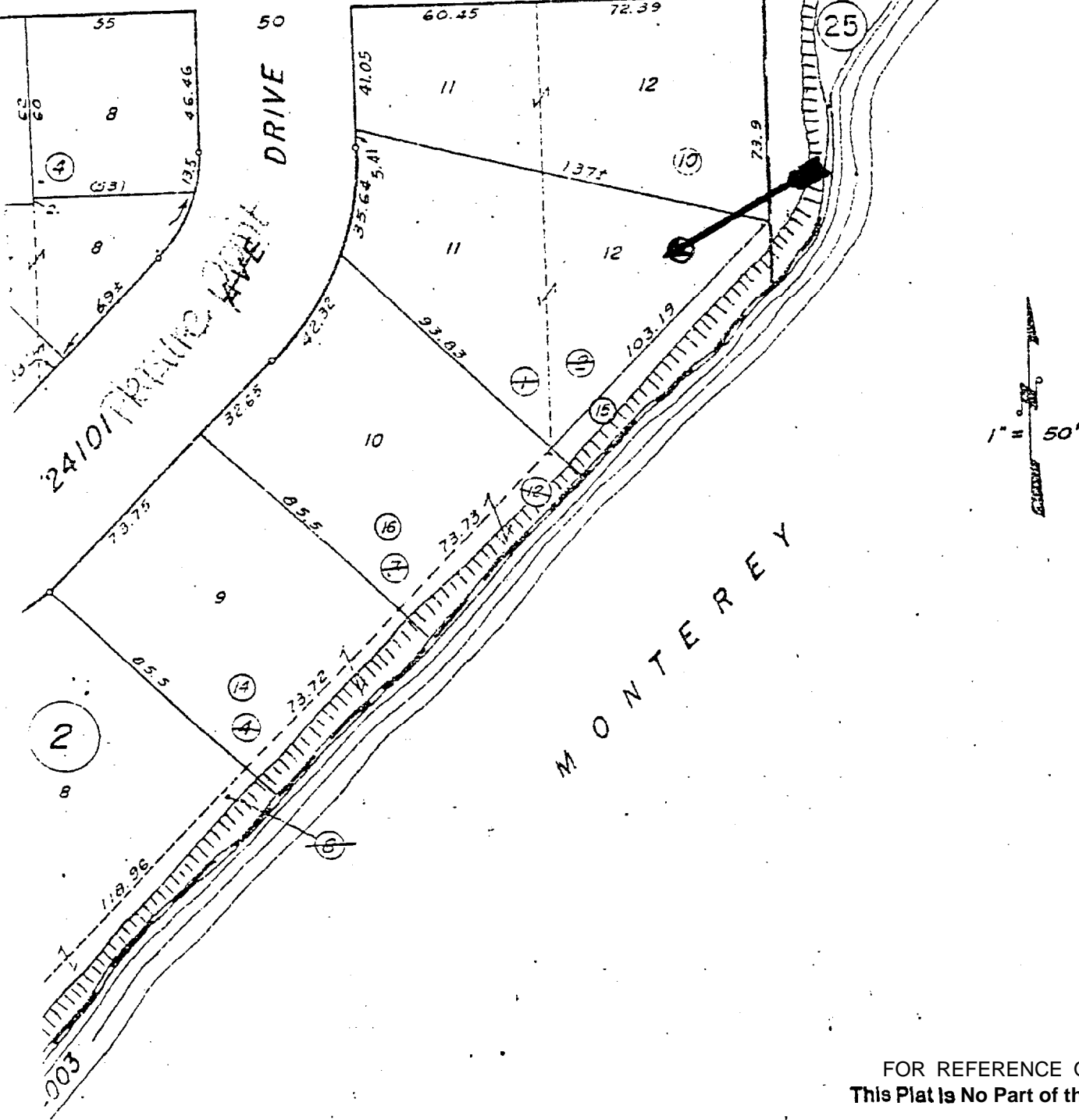
Tax Area Code 32-24
82-003
82-009

0215

2408

ENTRANCE DRIVE

4-30 4-24-34



FOR REFERENCE ONLY
This Plat Is No Part of the Report

Note - Assessor's Parcel Block B
Lot Numbers Shown in Circles

Assessor's Map No. 32-24
County of Santa Cruz, Cal

45

BEFORE THE BOARD OF SUPERVISORS
OF THE COUNTY OF SANTA CRUZ, STATE OF CALIFORNIA

0216

RESOLUTION NO. _____

On the motion of Supervisor
duly seconded by Supervisor
the following resolution is adopted:

RESOLUTION ACCEPTING SIX OFFERS TO DEDICATE TO THE
COUNTY OF SANTA CRUZ
(APN #'S 028-142, 028-233-21, 028-234-09, 028-242-11, 028-242-18, 032-242-09)

WHEREAS, public access right-of-way has been designated in the Irrevocable Offer to Dedicate recorded in the official records of the County of Santa Cruz as indicated below;

Book	Recorded	Page
3302	3/9/81	620
3667	12/30/83	266
3505	11/23/82	519
3599	7/22/83	585
4350	7/5/88	769
3859	7/18/85	393

and

WHEREAS, the County Director of Parks, Open Space and Cultural Services recommends that said Offers to Dedicate be accepted by the County of Santa Cruz for public use.

NOW, THEREFORE, BE IT RESOLVED that the Board finds, determines and declares that the public convenience and necessity will be served if said Offers to Dedicate herein described are accepted by the County of Santa Cruz for public use.

BE IT FURTHER RESOLVED AND ORDERED that the Offers to Dedicate described above are hereby accepted by the County of Santa Cruz in accordance with Section 13.08.413 of the County Code.

RESOLUTION NO. _____

Page 2

PASSED AND ADOPTED by the Board of Supervisors of the County of Santa Cruz, State of California, this _____ day of _____ 2000, by the following vote:

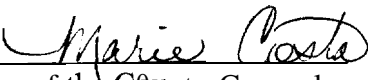
AYES: SUPERVISORS

NOES: SUPERVISORS

ABSENT: SUPERVISORS

Chairperson of said BoardATTEST: _____
Clerk of said Board

Approved as to form:


Office of the County Counsel

Distribution: Office of the County Counsel
Auditor-Controller
County Administrative Office
Parks
Real Property