



County of Santa Cruz⁰³⁴⁹

DEPARTMENT OF PUBLIC WORKS

701 OCEAN STREET, ROOM 410, SANTA CRUZ, CA 95060
(831) 454-2160 FAX (831) 454-2385 TDD (831) 454-2123

AGENDA: AUGUST 1, 2000

July 20, 2000

SANTA CRUZ COUNTY BOARD OF SUPERVISORS

701 Ocean Street
Santa Cruz, California 95060

SUBJECT: TRACT 1416, CALABRIA HEIGHTS, APN 039-341-1 1
LOCATED ON THE NORTH SIDE OF SOQUEL DRIVE, APTOS
ACCEPTANCE OF ROADS INTO THE COUNTY MAINTAINED SYSTEM

Members of the Board:

On June 22, 1999, the Board of Supervisors approved the final map for this subdivision. The Public Works Department inspected the constructed improvements and found they are complete and acceptable. The developers provided a letter of credit totaling \$472,500 to cover the following:

Faithful Performance Security	\$3 15,000
Labor and Materials Security	\$157,500

The subdivision agreement provides that at the time the Board of Supervisors accepts the improvements, and coincident with the release of the Faithful Performance Security, a sufficient amount (half) of the Faithful Performance security shall be retained to provide for the Guarantee, Warranty, and Maintenance of Work Security (\$157,500). The Labor and Materials Security will be released at the end of three months, assuming no liens are posted against the project.

The inspection fee has been paid in full.

Calabria Street and Parcel "A" will be accepted into the County maintained system and are shown on the map entitled Tract 1416, filed for record on June 25, 1999, in Volume 96 of Parcel Maps, at Page 05, Santa Cruz County Records.

It is therefore recommended that the Board of Supervisors take the following action:

1. Accept the site improvements as complete in accordance with previously approved plans.

2. Adopt the attached resolution accepting Calabria Street and Parcel "A" into the County maintained system.
3. Direct the Clerk of the Board to release the Faithful Performance and retain sufficient funds **from** the Faithful Performance Security to provide for the Guarantee, Warranty and Maintenance of Work Security.
4. **If**, at the end of three months, a search of the records by the Auditor-Controller's Office reveals no posted liens against the project, authorize the Clerk of the Board to release the Labor and Materials Security. The Guarantee, Warranty, and Maintenance of Work Security will be released at the end of twelve months provided there are no problems with the improvements.

Yours truly,



THOMAS L. BOLICH

Acting Director of Public Works

CRG:mg

Attachments

RECOMMENDED FOR APPROVAL:



County Administrative Officer



Copy to: Building Inspection
Department of Public Works

BEFORE THE BOARD OF SUPERVISORS
OF THE COUNTY OF SANTA CRUZ, STATE OF CALIFORNIA

RESOLUTION NO. - -

0351

On the motion of Supervisor
duly seconded by Supervisor
the following resolution is adopted:

RESOLUTION ACCEPTING CALABRIA STREET AND PARCEL "A"
INTO THE COUNTY MAINTAINED ROAD SYSTEM

WHEREAS, Calabria Street and Parcel "A" have been constructed and improved to a suitable design standard; and

WHEREAS, the Director of Public Works recommends that said Calabria Street and Parcel "A" be accepted into the County Maintained Road System; and

WHEREAS, the Board of Supervisors finds, determines, and declares that the public convenience and necessity will be served if said Calabria Street and Parcel "A" hereinafter described are maintained as a part of the County maintained road system.

NOW, THEREFORE, BE IT RESOLVED AND ORDERED that all those portions of Calabria Street and Parcel "A" as shown upon that certain map entitled Volume 96 of Parcel Maps at Page 05, are hereby accepted into the County maintained road system in accordance with Section 941 of the Streets and Highways Code.

PASSED AND ADOPTED by the Board of Supervisors of the County of Santa Cruz, State of California, this 1st day of August 2000, by the following vote:

AYES: SUPERVISORS

NOES: SUPERVISORS

ABSENT: SUPERVISORS

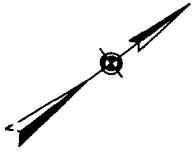
Chairperson of said Board

ATTEST: _____
Clerk of said Board

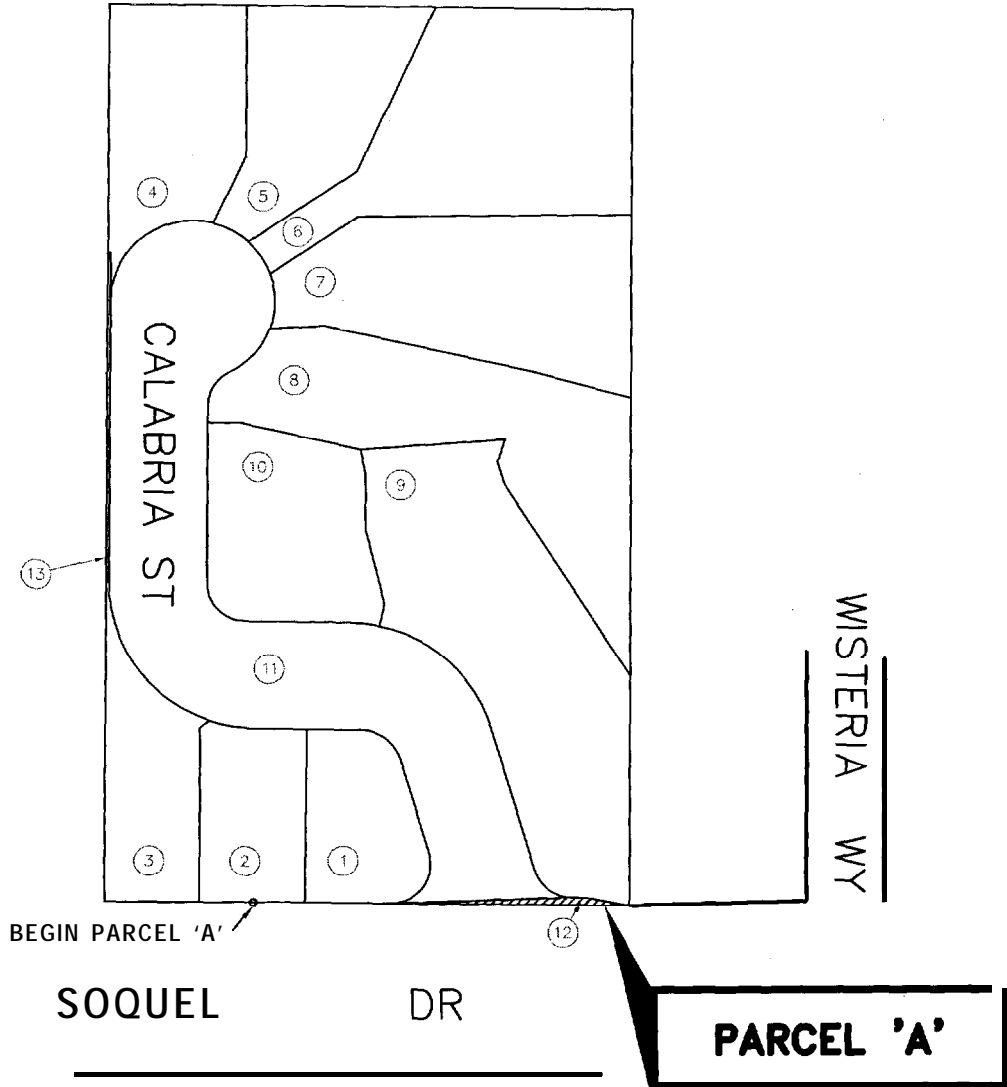
Approved as to form:


Chief Assistant County Counsel

Distribution:	Assessor	County Counsel	Planning
	Public Works	Recorder	Sheriff
	Surveyor		



1"=100'



**ROAD ACCEPTANCE .
 CALABRIA STREET
 TRACT 1416 - CALABRIA HEIGHTS**

APN: 39-561-01 THRU 13
 JULY 2000
 LOCATION MAP