



THOMAS L. BOLICH
DIRECTOR OF PUBLICWORKS

County of Santa Cruz

DEPARTMENT OF PUBLIC WORKS

701 OCEAN STREET, ROOM 410, SANTA CRUZ, CA 95060-4070
(831) 454-2160 FAX (831) 454-2385 TDD (831) 454-2123

AGENDA: SEPTEMBER 11,2001

August 29,2001

SANTA CRUZ COUNTY BOARD OF SUPERVISORS

701 Ocean Street
Santa Cruz, California 95060

**SUBJECT: TRACT 1288, GERA ESTATES, ASSESSORS PARCEL NUMBER 51-381-15
(GREEN VALLEY ROAD AND DOERING LANE, WATSONVILLE)
RESOLUTION ACCEPTING PARCEL INTO THE COUNTY
MAINTAINED ROAD SYSTEM**

Members of the Board:

On March 3, 1998, the Board of Supervisors approved the final map for this subdivision. The Public Works Department inspected the constructed improvements and found they are complete and acceptable. The developers provided a Certificate of Deposit to cover the following:

Faithful Performance Security	\$ 148,000.00
Minus Partial Release by Board of Supervisors on April 17,2001	\$ 37,000.00
Retained for Guarantee, Warranty, and Maintenance	\$ 74,000.00
Faithful Performance Security Amount to be Released	\$ 37,000.00
Labor and Materials Security	\$ 74,000.00
Inspection Security	\$ 2,960.00
	\$ 2,200.00 (cash minimum)

The Subdivision Agreement provides that at the time the Board of Supervisors accepts the improvements, and coincident with the release of the Faithful Performance Security, a sufficient amount of said security shall be retained to provide for the Guarantee, Warranty, and Maintenance of Work Security (\$74,000.00).


The inspection fee has been paid in full.

Parcel "B" will be accepted into the County maintained road system and is shown on the map entitled Tract 1288 filed for record on March 12, 1998, in Volume 93 of Maps at Page 38, Santa Cruz County Records.

It is therefore recommended that the Board of Supervisors take the following action:

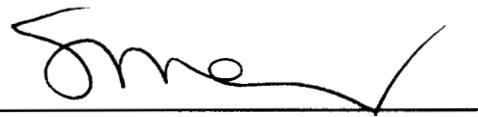
1. Accept the site improvements as complete in accordance with previously approved plans.
2. Adopt the attached resolution accepting Parcel "B" into the County maintained road system.
3. Direct the Clerk of the Board to release the Faithful Performance and Inspection Securities and retain sufficient funds from the Faithful Performance Security to provide for the Guarantee, Warranty and Maintenance of Work Security.
4. If, at the end of three months, a search of the records by the Auditor-Controller's Office reveals no posted liens against the project, authorize the Clerk of the Board to release the Labor and Materials Security. The Guarantee, Warranty, and Maintenance of Work Security will be released at the end of twelve months provided there are no problems with the improvements.

Yours truly,


 THOMAS L. BOLICH
 Director of Public Works

CG:mg

RECOMMENDED FOR APPROVAL:



 County Administrative Officer

Copy to: Building Inspection
Department of Public Works

RESOLUTION NO. ____

On the motion of Supervisor
duly seconded by Supervisor
the following resolution is adopted:

RESOLUTION ACCEPTING PARCEL "B" ALONG THE NORTHEAST SIDE OF
GREEN VALLEY ROAD INTO THE COUNTY MAINTAINED ROAD SYSTEM

WHEREAS, Parcel "B" has been constructed and improved to a suitable design
standard; and

WHEREAS, the Director of Public Works recommends that said Parcel "B" be
accepted into the County maintained road system; and

WHEREAS, the Board of Supervisors finds, determines, and declares that the public
convenience and necessity will be served if said Parcel "B" hereinafter described is maintained as a
part of the County maintained road system.

NOW, THEREFORE, BE IT RESOLVED AND ORDERED that all those portions
of Parcel "B" as shown upon that certain map entitled, Volume **93** of Parcel Maps, Page **38** and the
other portion of Parcel "B"; is hereby accepted into the County maintained road system in
accordance with Section 941 of the Streets and Highways Code.

PASSED AND ADOPTED by the Board of Supervisors of the County of Santa
Cruz, State of California, this ____ day of _____ 2001, by the following vote:

AYES: SUPERVISORS

NOES: SUPERVISORS

ABSENT: SUPERVISORS

Chairman of said Board

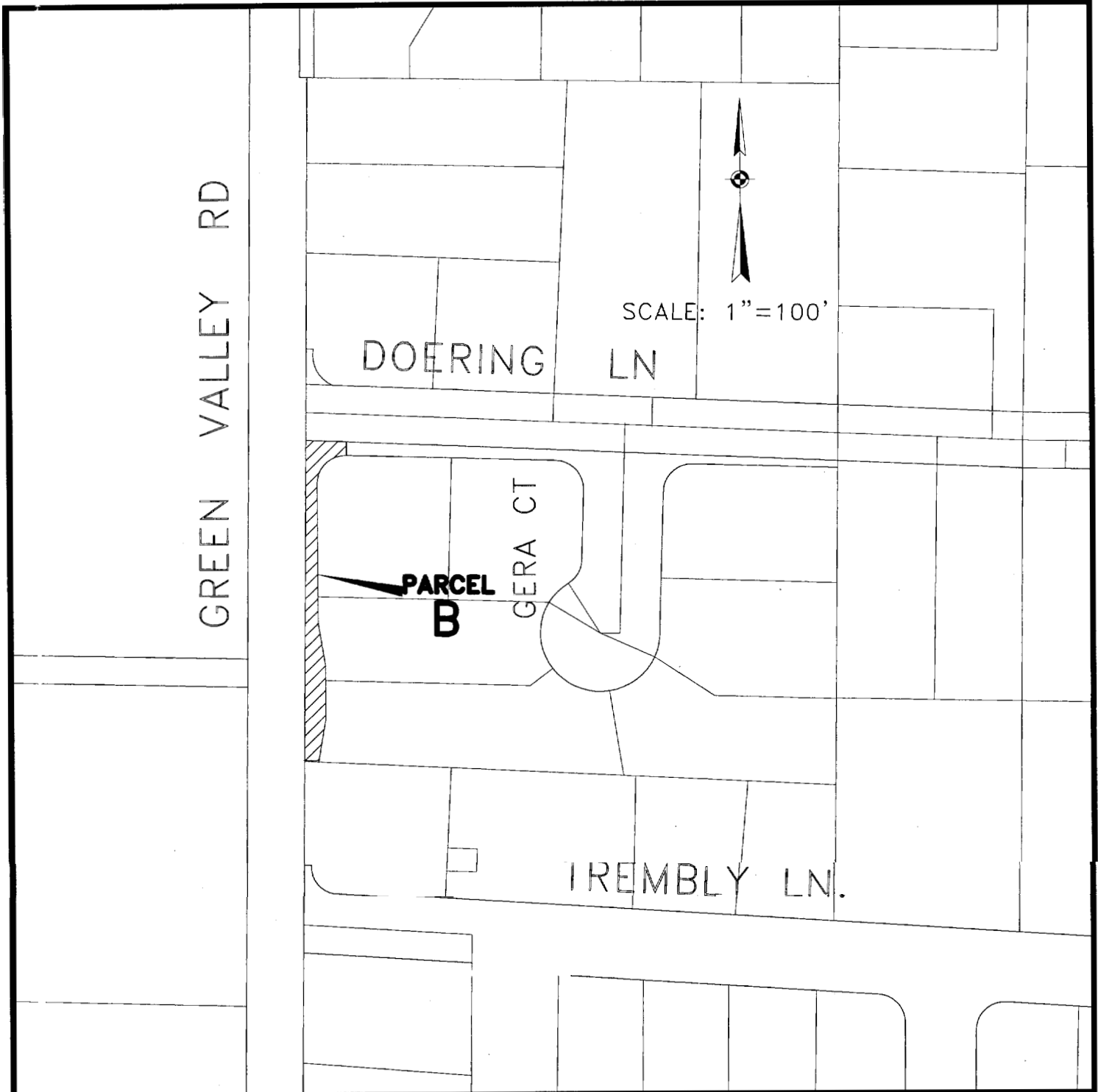
ATTEST: _____
Clerk of said Board

Approved as to form:



Chief Assistant County Counsel

Distribution: County Counsel
Public Works
CONST 13.DOC/geram.wpd



SANTA CRUZ COUNTY CONSTRUCTION DIVISION
 ROAD ACCEPTANCE (PARCEL B)
 GREEN VALLEY RD/DOERING LN
 TRACT NO. 1288
 APN: 051-381-15
 FEBRUARY 2001
 LOCATION MAP

