

# County of Santa Cruz

## DEPARTMENT OF PUBLIC WORKS

701 OCEAN STREET, ROOM 410, SANTA CRUZ, CA 950604070  
(831) 454-2160 FAX (831) 454-2385 TDD (831) 454-2123

THOMAS L. BOLICH  
DIRECTOR OF PUBLIC WORKS

### AGENDA: FEBRUARY 12, 2002

January 31, 2002

#### SANTA CRUZ COUNTY BOARD OF SUPERVISORS

701 Ocean Street  
Santa Cruz, California 95060

SUBJECT: BROMMER STREET IMPROVEMENTS, PHASE I  
ACCEPTANCE OF ROADWAY OFFER OF DEDICATION  
FROM TRACT 878, CAPTAINS COURT

#### Members of the Board:

On February 24, 1981, the Board of Supervisors approved the final map for the Captains Court subdivision, Tract 878. The final map included an offer of dedication of street right-of-way along Brommer Street (see attached map). Because the street frontage improvements constructed by the subdivision were interim in nature, consistent with the character of Brommer Street at the time, the offer of dedication was not accepted.

The Redevelopment Agency and the Public Works Department are in the process of seeking approval of a first phase of improvements along a section of Brommer Street between Seventh Avenue and Seventeenth Avenue, which includes the Captains Court frontage. In order to construct improvements along the Captains Court frontage, it is necessary that your Board accept the offer of dedication.

It is therefore recommended that the Board of Supervisors adopt the attached resolution accepting Parcel 'E?' on Brommer Street into the County Maintained Road System.

Yours truly,



THOMAS L. BOLICH

Director of Public Works

GG:abc

Attachments

RECOMMENDED FOR APPROVAL:

  
County Administrative Officer

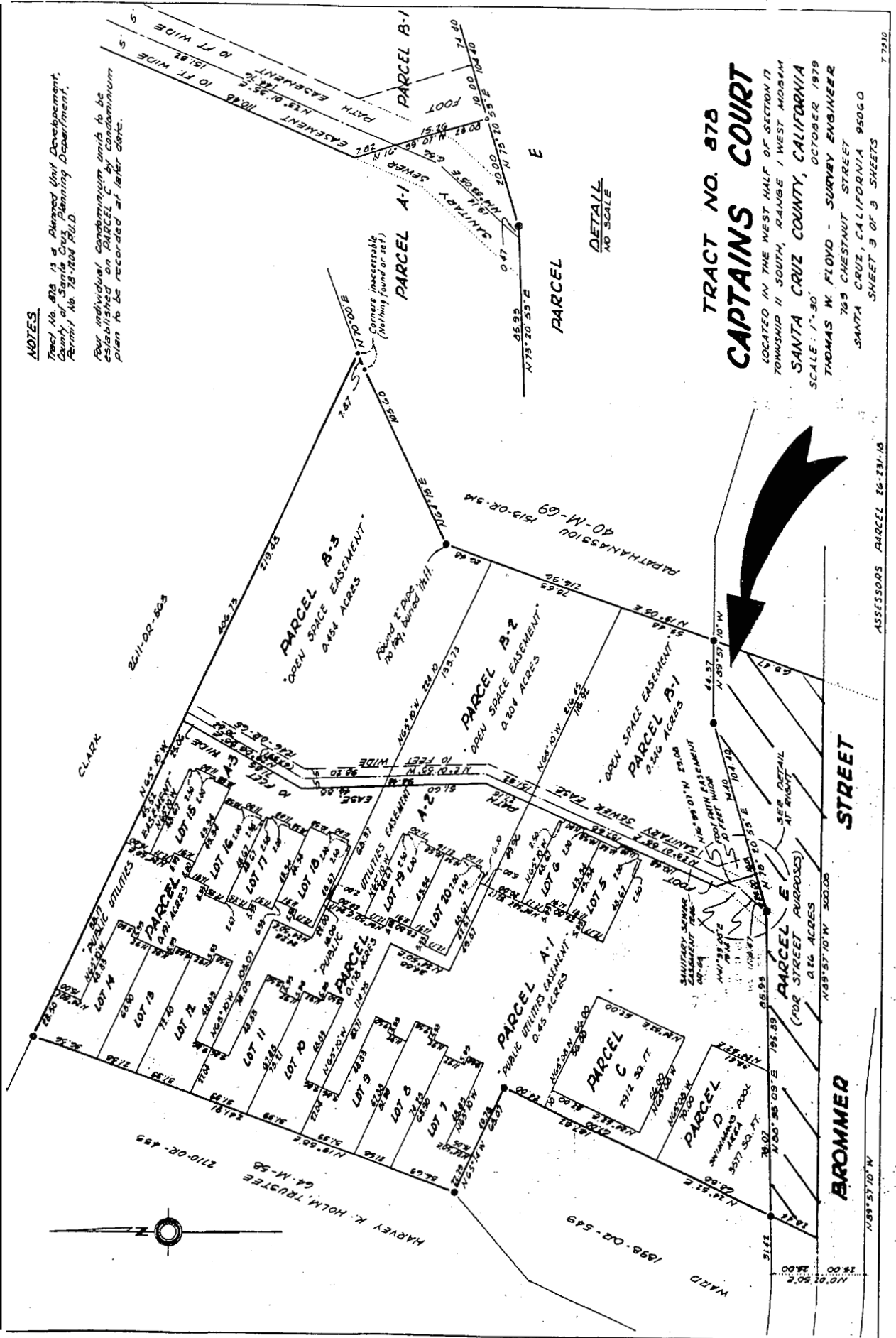
Copy to:     Redevelopment Agency  
              Public Works Department

BROMA

NOTES

Tract No. 878 is a Planned Unit Development,  
County of Santa Cruz Planning Department,  
Permit No. 78-1204 P.U.D.

Four individual condominium units to be established on PARCEL C by condominium plan to be recorded at later date.



**TRACT NO. 878**  
**CAPTAINS COURT**

LOCATED IN THE WEST HALF OF SECTION 17  
TOWNSHIP 11 SOUTH, RANGE 1 WEST NIDBOM

SANTA CRUZ COUNTY, CALIFORNIA  
OCTOBER 1979

THOMAS W. FLOYD - SURVEY ENGINEER  
769 CHESTNUT STREET  
SANTA CRUZ CALIFORNIA 95060

SLEETS E JO E LSEHS

ASSESSORS MARCEL 26-231-18

BEFORE THE BOARD OF SUPERVISORS  
OF THE COUNTY OF SANTA CRUZ, STATE OF CALIFORNIA

RESOLUTION NO. \_\_\_\_\_

On the motion of Supervisor  
duly seconded by Supervisor  
the following resolution is adopted:

RESOLUTION ACCEPTING AN OFFER OF DEDICATION ALONG  
BROMMER STREET INTO THE COUNTY MAINTAINED ROAD SYSTEM

WHEREAS, the following parcel of land was recorded and offered for dedication in Santa Cruz County Records:

A portion of APN 026-41 1-21, recorded as Parcel E, as shown on the final map of Tract No.878, Captains Court, recorded February 25, 1981, in Volume 70 of Maps, at Page 13, a strip of land of varying width for street purposes; and more particularly described in Exhibit "A".

WHEREAS, said portions of Brommer Street are to be constructed and improved to a suitable design standard, and the Director of Public Works recommends that said portions of Brommer Street be accepted into the County Maintained Road System; **and**

WHEREAS, the Board of Supervisors finds, determines and declares that the public convenience and necessity will be served if said street hereinafter described is maintained as a part of the County Maintained Road System;

NOW, THEREFORE, BE IT RESOLVED AND ORDERED that those portions of street as described in Exhibit "A" are hereby accepted into the County Maintained Road System in accordance with Section **13.08.413** of the County Code.

PASSED AND ADOPTED by the Board of Supervisors of the County of Santa Cruz,  
State of California, this \_\_\_\_ day of \_\_\_\_\_ 2002, by the following vote:

AYES: SUPERVISORS

0249

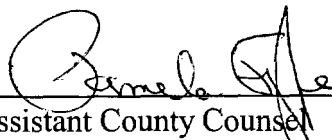
NOES: SUPERVISORS

ABSENT: SUPERVISORS

\_\_\_\_\_  
Chairperson of said Board

ATTEST: \_\_\_\_\_  
Clerk of said Board

Approved as to form:

  
\_\_\_\_\_  
Assistant County Counsel

Distribution: County Counsel  
Public Works

**OFFER OF DEDICATION OVER APN 26-411-21. CAPTAINS COURT**

Being a portion of the West 1/2 of Section 17, Township 11 South, Range 1 West, Mount Diablo Base and Meridian, projected, and a strip of land of varying width, for roadway purposes, and more particularly described as follows:

Beginning at a point, marked by a 1½" iron pipe, L.S. 3085, which point is the most southwesterly point on Parcel D, as shown on the final map of Tract No.878, Captains Court, recorded February 25, 1981, in Volume 70 of Maps, at Page 13, Santa Cruz County Records, and which point is also a point on the northerly right of way line of Brommer Street, as shown on said map; thence from said point of beginning North 88°35'09" East, 164.47 feet; thence North 73°20'53" East, 104.40 feet; thence South 89°57'10" East, 44.37 feet; thence South 19°05' West, 63.47 feet; thence North 89°57'10" West, 300.03; thence North 24°52' East, 28.44 feet back to the point of beginning.

Containing approximately 0.26 acres.