

# COUNTY OF SANTA CRUZ

OFFICE OF EMERGENCY SERVICES  
495 UPPER PARK DRIVE, SANTA CRUZ, CA 95060  
(831) 458-7150 FAX: (831) 458-7139  
MICHAEL J. DEVER, ADMINISTRATOR

3677

May 10, 2002

AGENDA: MAY 21, 2002

Board of Supervisors  
County of Santa Cruz  
701 Ocean Street  
Santa Cruz, CA 95060

SUBJECT: OES PRESENTATION ON EMERGENCY MANAGEMENT

Members of the Board:

On April 23, 2002, your Board deferred an overview of the Emergency Management Plan and other ongoing emergency service activities to today's agenda. Since the presentation is largely in a PowerPoint format, without a written staff report, we will provide presentation notes for your use when the item is considered.

Sincerely,

Michael J. Dever  
Emergency Services Administrator

RECOMMENDED:

Susan A. Mauriello  
County Administrative Officer

## Emergency Services Focuses on **Four** Topics

- Planning
- Response
- Recovery
- Mitigation

---

---

---

---

---

---

---

## Planning

**Santa Cruz county's planning has historically focused on natural hazards**

- > Earthquake
- > Flooding
- > Landslide
- > Fire

---

---

---

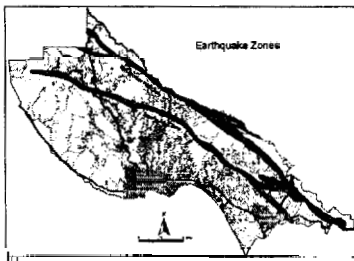
---

---

---

---

## Earthquake



- 5% of the structures ( 3,884 )
  - 14% of all County roads ( 303 miles )
  - 6 fire stations
  - 9 schools
- lie within ½ mile of a fault zone

---

---

---

---

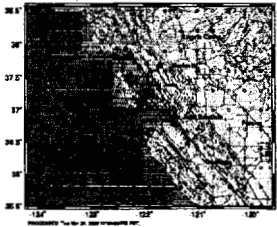
---

---

---

## New Technologies

USGSALICEDMG Rapid Instrumental Intensity Map for Loma Prieta Earthquake



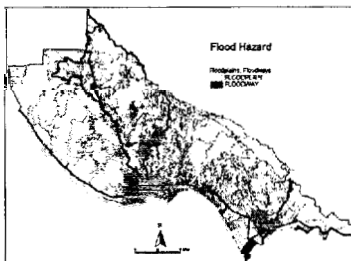
- "Shake Map" from USGS
- Available online within approximately 5 minutes after an earthquake

## Fire



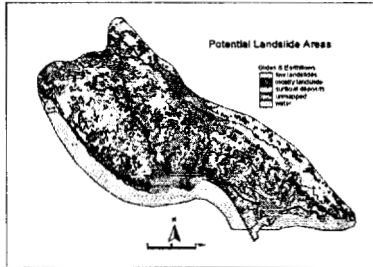
- 5% of the developed parcels in the County (3,538)
- 8.0% of roads (178 miles)
- 5% of the CDF fire stations (2) located within a fire-hazard area.

## Flood



- 11 % of the developed parcels (8,359)
- 5% of roads (103 miles)
- 25% of the sheriff's facilities (3)
- 30% of the fire stations (7)
- 9% of schools (16) are located within or intersected by the 100 year flood plain

## Landslide



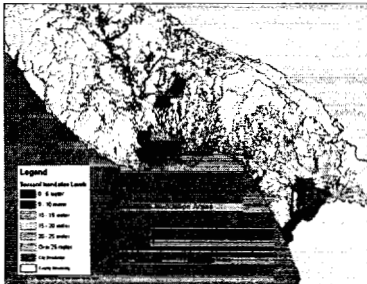
- 7.5% of the developed parcels (5,523)
  - 11% of roads (233 miles)
  - 17% of Sheriff's facilities (2)
  - 35% of non-County fire stations (3)
- are within or intersected by known landslide-prone areas

## New Topics

Over the past two years, OES planning has begun in new areas such as:

- ↳ Tsunami
- ↳ Pandemic
- ↳ Terrorism

## Tsunami



Actively working with:

- State and Western Regional Tsunami Planning Committees to develop a practical warning and evacuation plan
- USC scientists developing a tsunami runup model for the Santa Cruz County coastal area

## Pandemic



Initial planning effort **focused** on influenza **virus**

- Pandemic Planning Committee **has** been meeting and developing a response plan for the past **two years**
- **After** September 11 **and** "White Powder Days" – acts of commission and first responder concepts were rapidly incorporated into the plan
- The Pandemic Planning process **also serves as** an effective model for other biologic agents
- **1<sup>st</sup> draft** plan **will be** complete shortly

---

---

---

---

---

---

---

---

## Terrorism

- **Terrorist Attacks only strengthened** the local emergency response organization
  - "White Powder Days" of last fall saw unprecedented cooperation **between** Law, Fin, EMS and OES organizations
- OES, Law and EMS are coordinating with
  - **State OES**
  - FBI through Bay Area Joint Terrorism Task Force
  - All local jurisdictions and CBO's to develop **local** database of **key** facilities
- **Local Emergency Organizations have already been working on** local terrorism issues
- Justice Department WMD grant program
  - Grant for WMD response equipment
  - **Scotts Valley Fire has received 1<sup>st</sup> phase of** equipment
  - 3 year **program underway** updating equipment, training and operational needs

---

---

---

---

---

---

---

---

## Response

- **Currently working with** Law, Fire, EMS and **OES** organizations in Monterey and San Benito Counties to develop regional multi-hazard response plans

### Training

### Coordinated Grant strategy

- Coordination with State OES, OJP & FBI on regional issues

---

---

---

---

---

---

---

---

## Mitigation

- Hazard Mitigation Grant Programs
  - Felton Grove
  - Landslide (GHAD's)
- Hazard Mitigation Planning
  - Flood Mitigation
    - \$ 50,000 Planning Grant
    - \$667,000 Project Assistance Grant
  - Habitat Conservation Planning Grant
    - \$93,000 grant from CDF for 1<sup>st</sup> year of a 2 year project

---

---

---

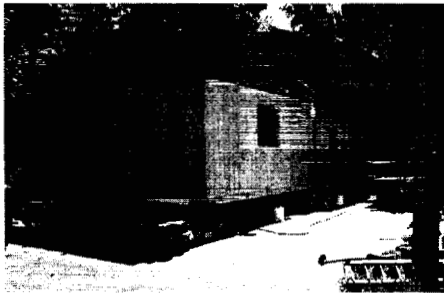
---

---

---

---

## Felton Grove Elevation Project



•Pre - Lift

---

---

---

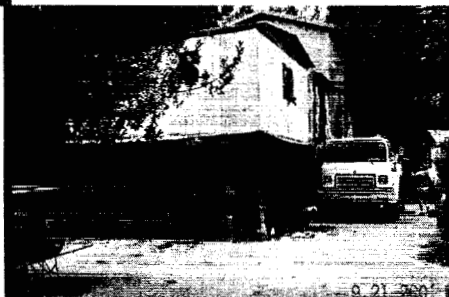
---

---

---

---

## Felton Grove Elevation Project



•Lift

---

---

---

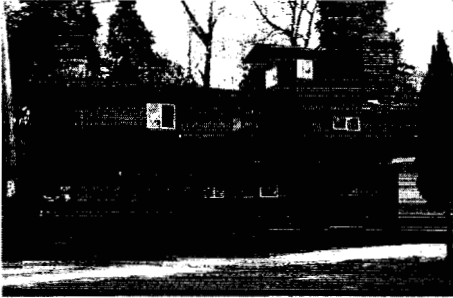
---

---

---

---

## Felton Grove Elevation Project



•Near Done

---

---

---

---

---

---

---

---

## Landslide Acquisition (GHAD's)



•Corralitos  
•Heartwood Hill  
•Mid-County

---

---

---

---

---

---

---

---

## Flood Mitigation Planning Grant

- Prevention
- Emergency Services
- Property Protection
- Structural Projects
- Natural Resource Protection
- Public Information

---

---

---

---

---

---

---

---