



# County of Santa Cruz

## DEPARTMENT OF PUBLIC WORKS - REAL PROPERTY DIVISION

701 OCEAN STREET, ROOM 410, SANTA CRUZ, CA 95060-4070  
 (831) 454-2331 FAX (831) 454-2385 TDD (831) 454-2123

THOMAS L. BOLICH  
 DIRECTOR OF PUBLIC WORKS

SCOTT C. LOICHTINGER  
 CHIEF REAL PROPERTY AGENT

AGENDA: AUGUST 6, 2002  
 July 25, 2002

SANTA CRUZ COUNTY BOARD OF SUPERVISORS  
 701 Ocean Street  
 Santa Cruz, California 95060

SUBJECT: BROMMER STREET IMPROVEMENTS, 7<sup>TH</sup> AVENUE TO 17<sup>TH</sup> AVENUE  
 ACCEPTANCE OF OFFERS OF DEDICATION

Members of the Board:

To facilitate proposed street and sidewalk improvements on Brommer Street, it would now be advisable to accept five parcels previously offered for dedication to the County of Santa Cruz. Since 1980 these parcels were offered on recorded subdivision maps recorded in the Official Records of the County of Santa Cruz.

It is therefore recommended that the Board of Supervisors adopt the accompanying resolution accepting the offers of dedication in accordance with Section 13.08.413 of the County Code,

Yours truly,

THOMAS L. BOLICH  
 Director of Public Works

pap  
 Attachments

RECOMMENDED FOR APPROVAL:

County Administrative Officer

Copy to: Public Works Department  
 Redevelopment Department  
 County Counsel  
 Assessor

BEFORE THE BOARD OF SUPERVISORS  
OF THE COUNTY OF SANTA CRUZ, STATE OF CALIFORNIA  
RESOLUTION NO. \_\_\_\_\_

On the motion of Supervisor  
duly seconded by Supervisor  
the following resolution is adopted:

RESOLUTION FOR ACCEPTANCE OF OFFERS OF DEDICATION  
BROMMER STREET IMPROVEMENTS, 7<sup>TH</sup> AVENUE TO 17<sup>TH</sup> AVENUE

RESOLVED by the Board of Supervisors of the County of Santa Cruz, State of California:

WHEREAS, five parcels of land listed below were offered for dedication to the County of Santa Cruz; and

WHEREAS, the Department of Public Works recommends that the following offers of dedication, or portion thereof, be accepted to help facilitate proposed street and sidewalk improvements on Brommer Street.

NOW, THEREFORE, BE IT RESOLVED that the Board of Supervisors finds, determines and declares that the public convenience and necessity will be served if the following offers, or portion thereof, are accepted by the County of Santa Cruz for public use.

<u>Map or Book</u>	<u>Page</u>		<u>Recorded</u>
Maps 70	Page 13	Parcel E	February 25, 1981
Parcel Maps 56	Page 35	Parcel A	April 13, 2000
Parcel Maps 56	Page 19	Parcel B	July 28, 1999
Parcel Maps 36	Page 18	Parcel C	August 4, 1980
Parcel Maps 56	Page 4	Portion of Lots C & B described in Exhibit "A", attached hereto and made a part hereof	November 5, 1998

BE IT FURTHER RESOLVED AND ORDERED that the above referenced offers of dedication, or portion thereof, are hereby accepted by the County of Santa Cruz in accordance with Section 13.08.413 of the County Code.

PASSED AND ADOPTED by the Board of Supervisors of the County of Santa Cruz, State of California, this \_\_\_\_ day of \_\_\_\_\_, 2002, by the following vote:

AYES: SUPERVISORS

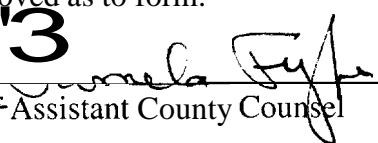
NOES: SUPERVISORS

ABSENT: SUPERVISORS

\_\_\_\_\_  
Chairperson of said Board

ATTEST: \_\_\_\_\_  
Clerk of said Board

Approved as to form:

**3**  
  
\_\_\_\_\_  
Chief Assistant County Counsel

Distribution: Real Property Division  
County Counsel  
Public Works  
Assessor

# **EXHIBIT "A"**

0410

**APN 026-302-52 (TANSEY), APN 026-302-53 (D'AURAY)**

Situate in the County of Santa Cruz, State of California, and described as follows:

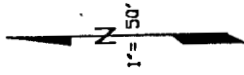
Being a portion of the 20 foot wide storm drainage easement as shown on the parcel map filed November 5, 1998 in Volume 56 of Parcel Maps at Page 4, Santa Cruz County Records, and more particularly described as follows:

Being that portion of the storm drainage easement which is over a portion of Lot C and Lot B as shown on said map.

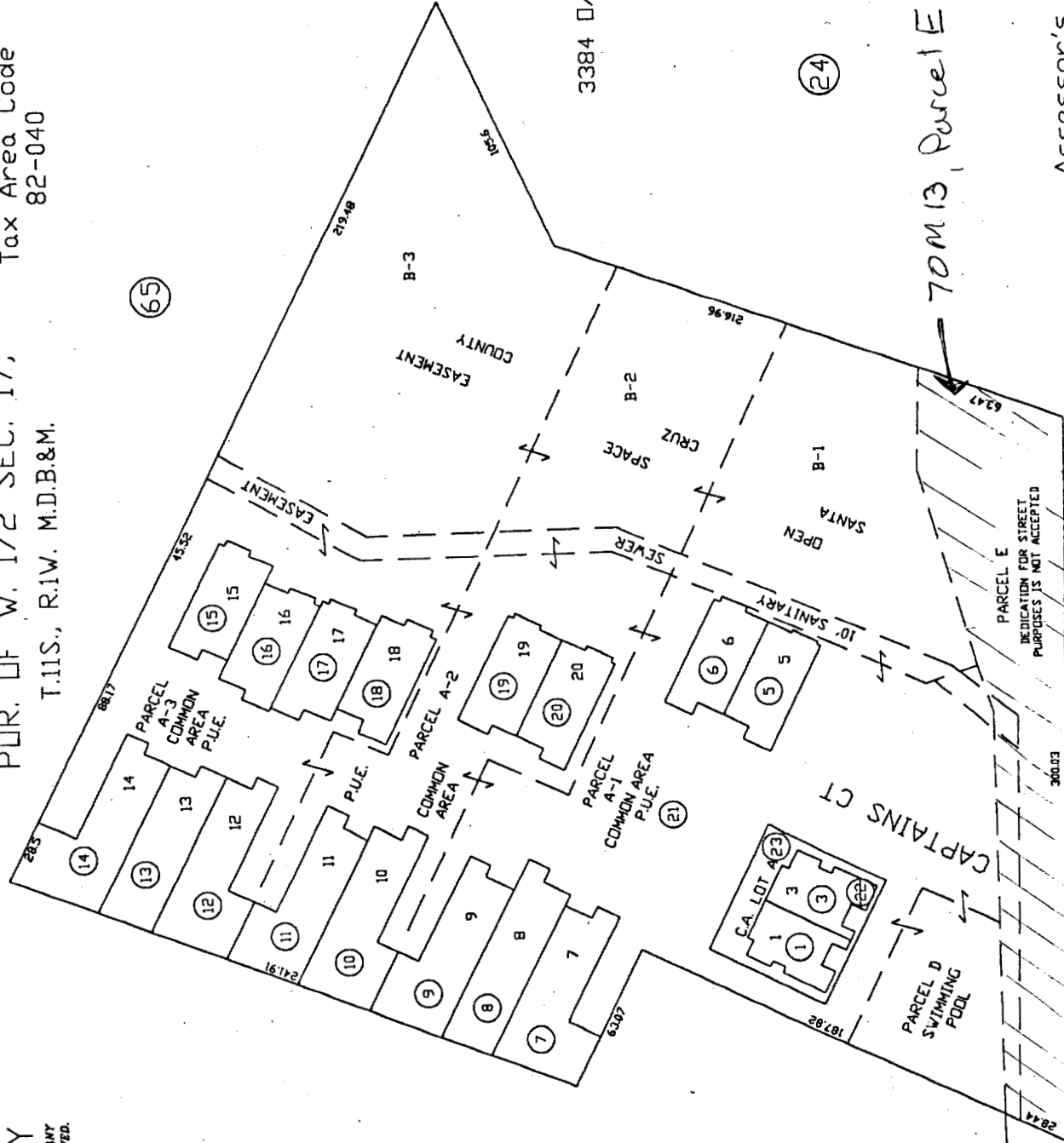
**FOR TAX PURPOSES ONLY**  
 ASSESSOR MAKES NO GUARANTEE AS TO MAP ACCURACY NOR ASSUMES ANY  
 LIABILITY FOR OTHER USES. NOT TO BE REPRODUCED. ALL RIGHTS RESERVED.  
 © COPYRIGHT SANTA CRUZ COUNTY ASSESSOR 1985

POR. OF W. 1/2 SEC. 17,  
 T.11S., R.1W. M.D.B.&M.  
 Tax Area Code  
 82-040

26-41



FIRST FLOOR  
 TRACT No. 878  
 CAPTAINS COURT  
 (70MB13) 2/25/81



3384 D/R 366 to 371  
 10/30/81

0411

Assessor's Map No. 26-41  
 County of Santa Cruz, Ca  
 March 1981

Note - Assessor's Parcel Block &  
 Lot Numbers Shown in Circles.

BROMMER ST

(66)

(65)

(24)

(23)

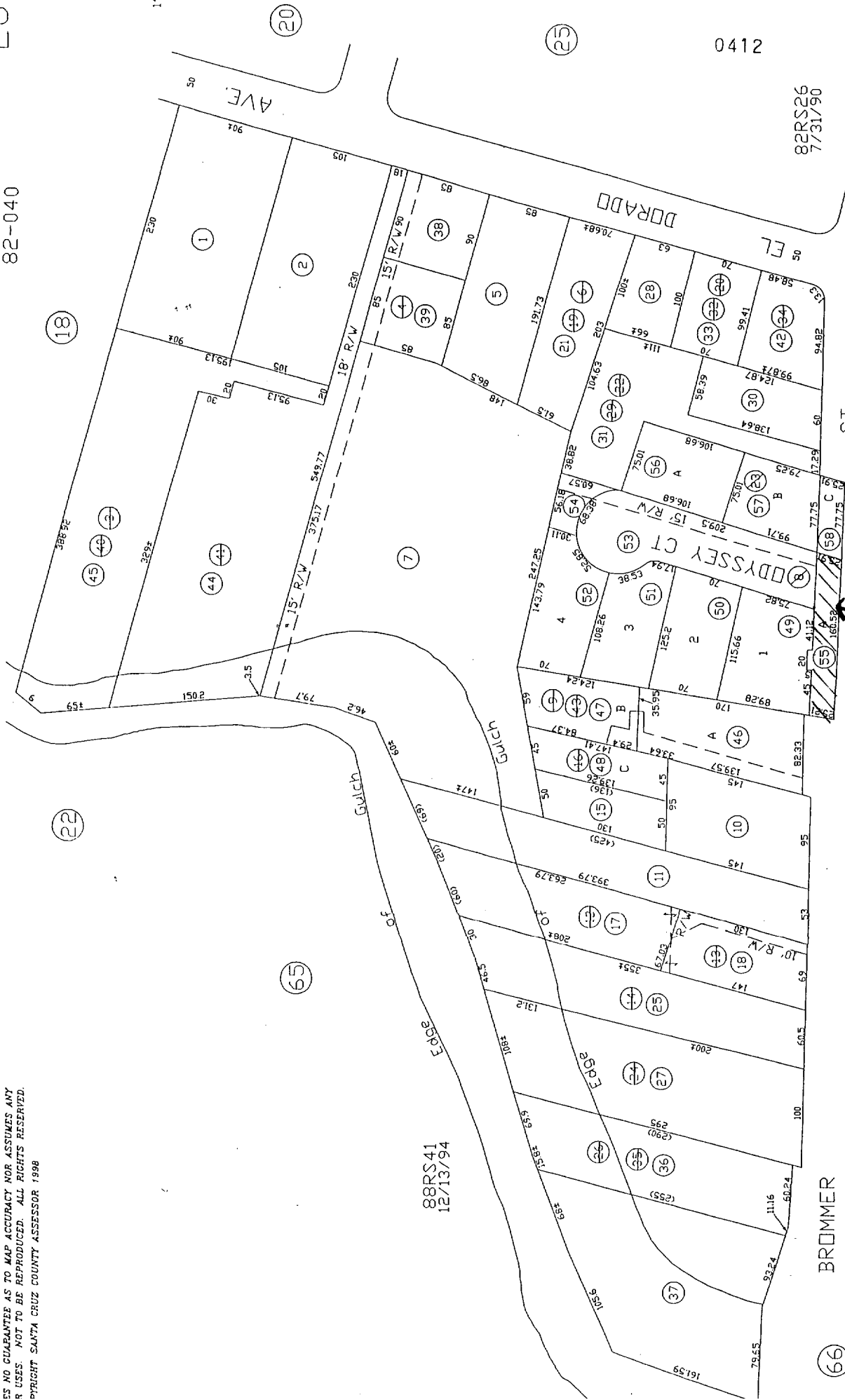
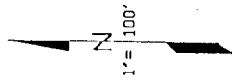
43

FOR TAX PURPOSES ONLY  
NO GUARANTEE AS TO MAP ACCURACY NOR ASSUMES ANY  
R USES. NOT TO BE REPRODUCED. ALL RIGHTS RESERVED.  
COPYRIGHT SANTA CRUZ COUNTY ASSESSOR 1998

POR. OF SEC. 17, T.11S., R.1W., M.D.B. & M.

Tax Area Code  
82-040

26-24



88RS41  
12/13/94

0412

82RS26  
7/31/90

Parcel A  
56PM35  
57PM24  
9/25/01

56PM35  
4/13/00

56PM35

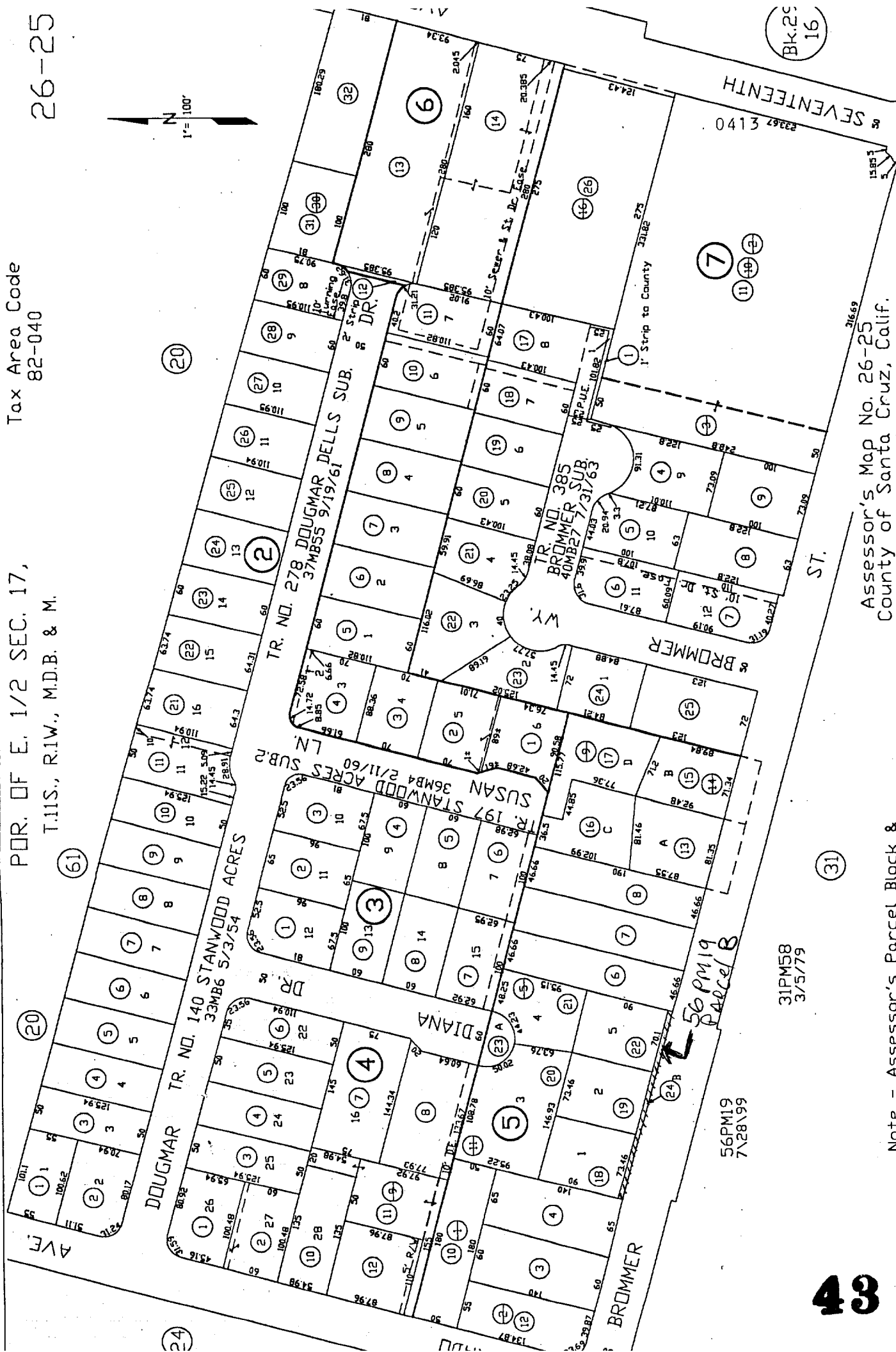
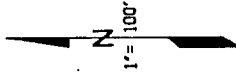
Assessor's Map No. 26-24  
County of Santa Cruz, Calif.  
July, 1998

Note: - Assessor's Parcel & Block  
Numbers Shown in Circles.

POR. OF E. 1/2 SEC. 17,  
 T.11S., R.1W., M.D.B. & M.

Tax Area Code  
 82-040

26-25



Bk. 25  
 16

Assessor's Map No. 26-25  
 County of Santa Cruz, Calif.  
 July, 1998

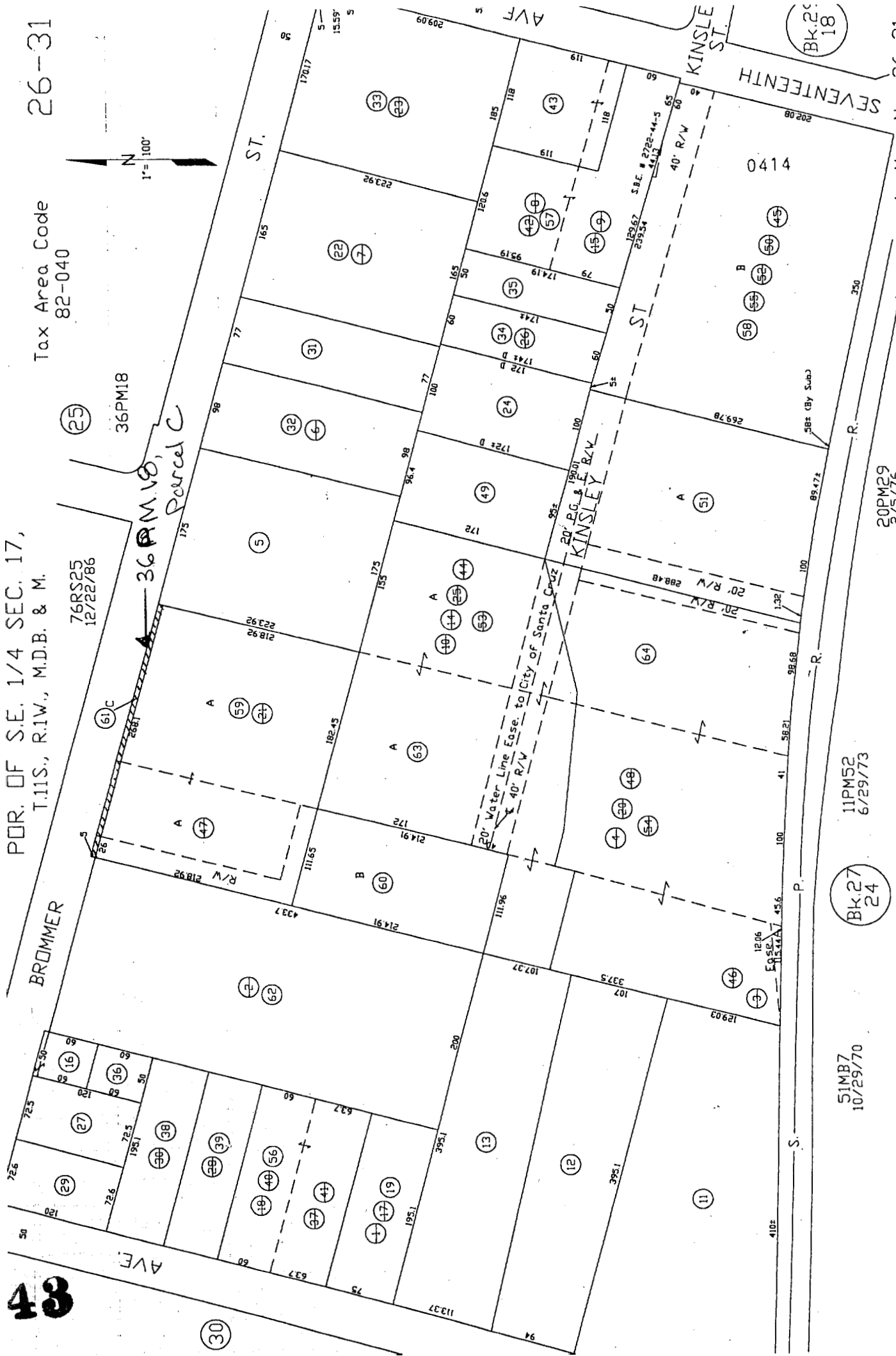
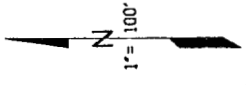
Note - Assessor's Parcel Block &  
 Lot Numbers Shown in Circles.

48

POR. OF S.E. 1/4 SEC. 17,  
T.11S., R.1W., M.D.B. & M.

Tax Area Code  
82-040

26-31



76RS25  
12/22/86

36PM18  
Parcel C

(25)

51MB7  
10/29/70

11PM52  
6/29/73

Bk. 27  
24

20PM29  
2/5/76

Note - Assessor's Parcel Block &  
Lot Numbers Shown in Circles.

Assessor's Map No. 26-31  
County of Santa Cruz, Calif.  
July, 1998

Bk. 26  
18



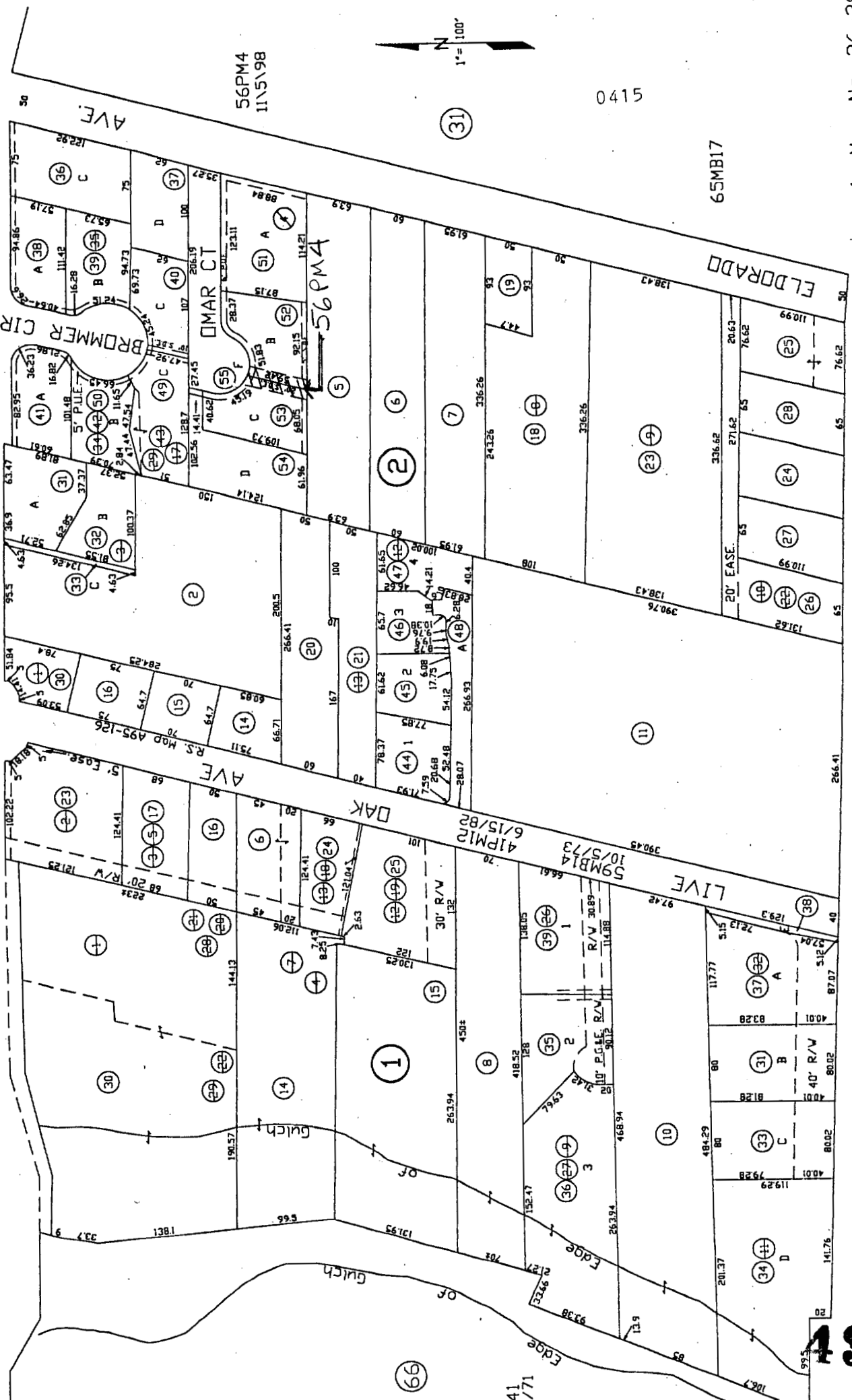
**MAX PURPOSES ONLY**

NO GUARANTEE AS TO MAP ACCURACY NOR ASSUMES ANY  
RESPONSIBILITY FOR USES. NOT TO BE REPRODUCED. ALL RIGHTS RESERVED.  
COPYRIGHT SANTA CRUZ COUNTY ASSESSOR 1998

FUK. LT S. 1/4 S.L. 1', 34PM53 1/16/80  
T.IIS., R.I.W., M.D.B. & M. 1/16/80  
34PM70 82-040 40PM16 2/2/82 40PM15 2/2/82

26-30

BROMMER ST.



0415

65MB17

Assessor's Map No. 26-30  
County of Santa Cruz, Calif

Assessor's Parcel Block 8  
Bk. 27

S. (26-300-1)

48