



County of Santa Cruz

DEPARTMENT OF PUBLIC WORKS

701 OCEAN STREET, ROOM 410, SANTA CRUZ, CA 95060-4070
(831) 454-2160 FAX (831) 454-2385 TDD (831) 454-2123

THOMAS L. BOLICH
DIRECTOR OF PUBLIC WORKS

AGENDA: AUGUST 13, 2002

August 1, 2002

SANTA CRUZ COUNTY BOARD OF SUPERVISORS

701 Ocean Street
Santa Cruz, California 95060

**SUBJECT: TRACT 1423, SANTOS SUBDIVISION, APN 26-631-18
ACCEPTANCE OF ADELAIDA COURT, MARIANA COURT, AND
JOSE AVENUE INTO THE COUNTY MAINTAINED ROAD SYSTEM, AND
DESIGNATION OF STOP INTERSECTIONS**

Members of the Board:

On April 24, 2001, the Board of Supervisors approved the final map for this subdivision. The Public Works Department inspected the constructed improvements and found them to be complete and acceptable. The developers provided a letter of credit to cover the following:

Faithful Performance Security	\$ 328,000.00
Minus partial release made by the Board of Supervisors on November 6, 2001	\$ 82,000.00
Balance of Faithful Performance to be released	\$ 82,000.00
Labor and Materials Security	\$ 164,000.00

The Subdivision Agreement provides that at the time the Board of Supervisors accepts the improvements, and coincident with the release of the Faithful Performance Security, a sufficient amount of said security shall be retained to provide for the Guarantee, Warranty, and Maintenance of Work Security (\$164,000.00).

The inspection fee has been paid in full.

This subdivision included the construction of the westerly half of Jose Avenue and two new cul-de-sacs, Adelaida Court and Mariana Court. The easterly portion of Jose Avenue was dedicated to the County on Volume 41 of Parcel Maps, Page 1, and previously constructed to County standards. All three of these streets are to be accepted as County maintained roads.

Within the subdivision two stops signs were required to regulate the intersections on the internal roads. Attached is an ordinance to amend Chapter 9.28 of the Santa Cruz County Code to include the stop signs.

It is therefore recommended that the Board of Supervisors take the following action:

1. Accept the site improvements as complete in accordance with previously approved plans.
2. Adopt the attached resolution accepting Jose Avenue, Adelaida Court, and Mariana Court into the County Maintained System.
3. Adopt in concept the attached ordinance amending Chapter 9.28 of the Santa Cruz County Code and place it on the next available agenda for final adoption.
4. Direct the Clerk of the Board to release the Faithful Performance Security and retain sufficient funds from the Faithful Performance Security to provide for the Guarantee, Warranty, and Maintenance of Work Security.
5. If, at the end of three months, a search of the records by the Auditor-Controller's Office reveals no posted liens against the project, authorize the Clerk of the Board to release the Labor and Materials Security. The Guarantee, Warranty, and Maintenance of Work Security will be released at the end of twelve months provided there are no problems with the improvements.

Yours truly,



THOMAS L. BOLICH
Director of Public Works

CRG:mg

RECOMMENDED FOR APPROVAL:



County Administrative Officer

Copy to: Building Inspection
Department of Public Works

BEFORE THE BOARD OF SUPERVISORS
OF THE COUNTY OF SANTA CRUZ, STATE OF CALIFORNIA

0259

RESOLUTION NO. _____

On the motion of Supervisor
duly seconded by Supervisor
the following resolution is adopted:

RESOLUTION ACCEPTING JOSE AVENUE, ADELAIDA COURT, AND MARIANA COURT
INTO THE COUNTY MAINTAINED ROAD SYSTEM

WHEREAS, Jose Avenue, Adelaida Court, and Mariana Court have been constructed and improved to a suitable design standard; and

WHEREAS, the Director of Public Works recommends that said Jose Avenue, Adelaida Court, and Mariana Court be accepted into the County Maintained Road System; and

WHEREAS, the Board of Supervisors finds, determines, and declares that the public convenience and necessity will be served if said Jose Avenue, Adelaida Court, and Mariana Court hereinafter described be maintained as a part of the County Maintained Road System.

NOW, THEREFORE, BE IT RESOLVED AND ORDERED that all those portions of Jose Avenue, Adelaida Court, and Mariana Court as shown upon that certain map entitled Volume 99 of Maps, Page 35, and the portion of Jose Avenue offered on Volume 41 of Parcel Maps Page 1 (Parcel "D") are hereby accepted into the County Maintained Road System in accordance with Section 941 of the Streets and Highways Code.

PASSED AND ADOPTED by the Board of Supervisors of the County of Santa Cruz, State of California, this ____ day of _____, 2002, by the following vote:

AYES: SUPERVISORS

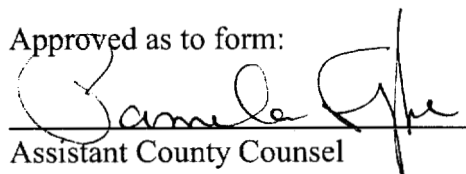
NOES: SUPERVISORS

ABSENT: SUPERVISORS

Chairperson of said Board

ATTEST: _____
Clerk of said Board

Approved as to form:

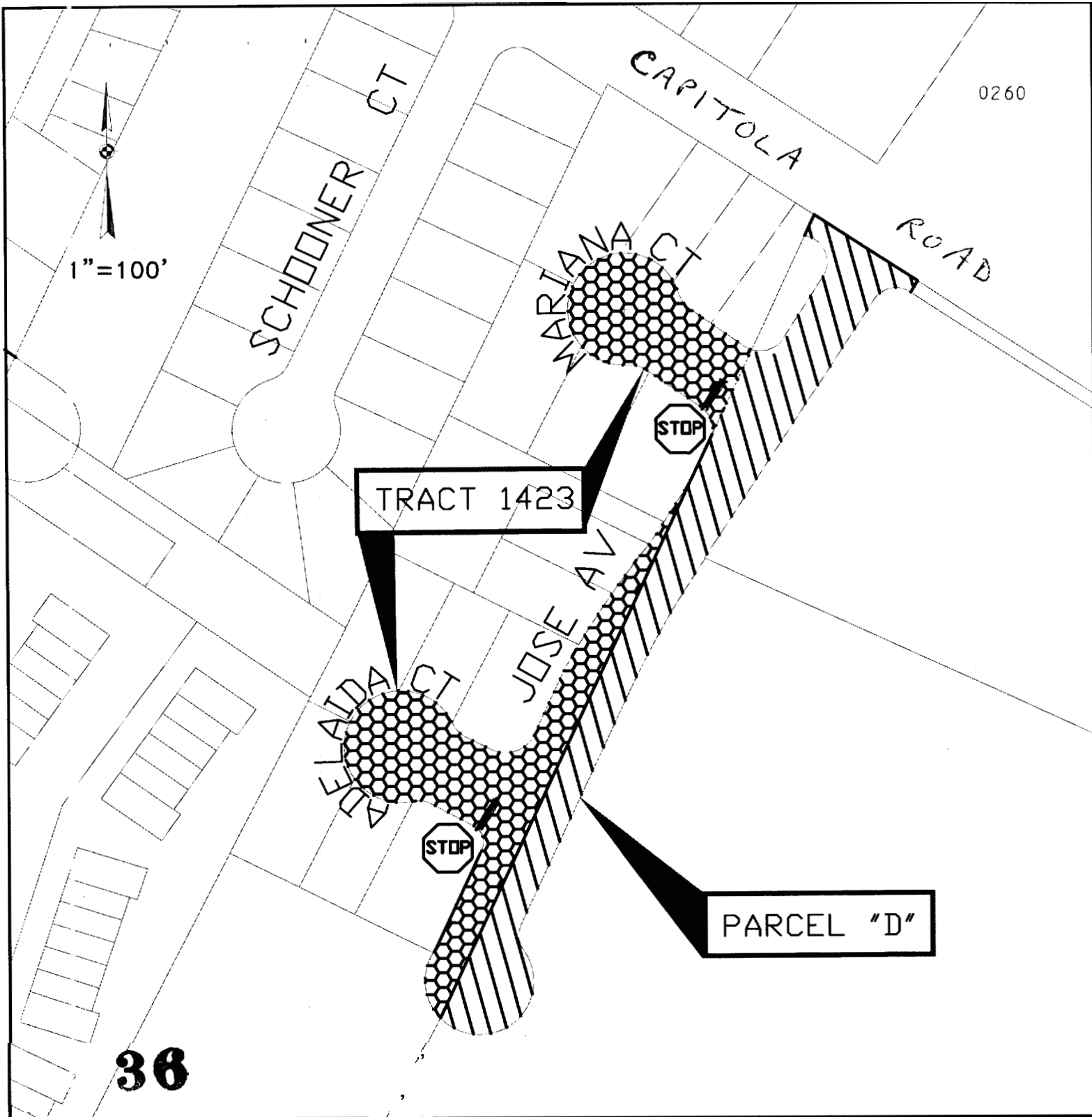

Assistant County Counsel

Distribution: Assessor
Public Works
BRDFLMP.DOC/SANTM.WPD

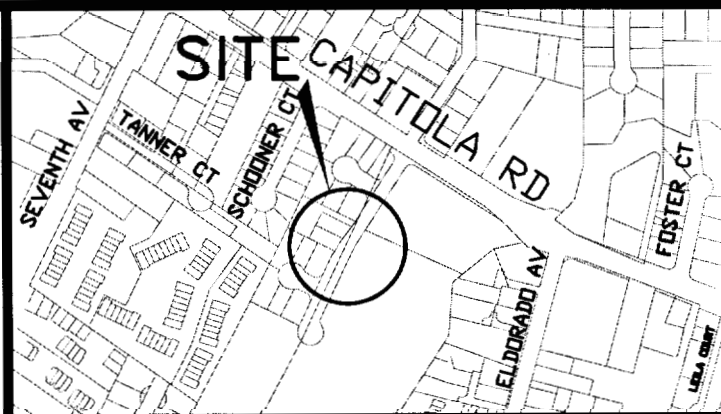
County Counsel
Recorder

Planning
Sheriff

\$6



SANTA CRUZ COUNTY CONSTRUCTION DIVISION
 ROAD ACCEPTANCE
 JOSE AVE, ADELAIDA CT, AND
 MARIANA CT
 TRACT 1423/PARCEL D (41 PM 1)
 APN 026-641-04
 LOCATION MAP



ORDINANCE NO. _____

ORDINANCE AMENDING CHAPTER 9 OF THE SANTA CRUZ COUNTY CODE
RELATING TO STOP INTERSECTIONS

The Board of Supervisors of the County of Santa Cruz
does ordain as follows:

SECTION I

Section 9.28.20 - Stop intersections designated, is
hereby amended by adding paragraph A.1.5 to read:

A.1.5. On Adelaida Court, at Jose Avenue.

SECTION II

Section 9.28.20 - Stop intersections designated, is
hereby amended by adding paragraph M.7.5 to read:

M.7.5. On Mariana Court, at Jose Avenue.

SECTION III

This Ordinance shall take effect on the 31st day after
the date of final passage.

PASSED AND ADOPTED by the Board of Supervisors of the
County of Santa Cruz, State of California, this _____ day of
_____, 2002, by the following vote;

AYES: SUPERVISORS

NOES: SUPERVISORS

ABSENT: SUPERVISORS

Chairperson of said Board

ATTEST: _____
Clerk of said Board

Approved as to form:



Assistant County Counsel

Distribution: County Counsel
Public Works Department

ORDINANCE NO. _____

ORDINANCE AMENDING CHAPTER 9 OF THE SANTA CRUZ COUNTY CODE
RELATING TO STOP INTERSECTIONS

The Board of Supervisors of the County of Santa Cruz
does ordain as follows:

SECTION I

Section 9.28.20 - Stop intersections designated, is
hereby amended by adding paragraph A.1.5 to read:

A.1.5. On Adelaida Court, at Jose Avenue.

SECTION II

Section 9.28.20 - Stop intersections designated, is
hereby amended by adding paragraph M.7.5 to read:

M.7.5. On Mariana Court, at Jose Avenue.

SECTION III

This Ordinance shall take effect on the 31st day after
the date of final passage.

PASSED AND ADOPTED by the Board of Supervisors of the
County of Santa Cruz, State of California, this _____ day of
_____, 2002, by the following vote;

AYES: SUPERVISORS

NOES: SUPERVISORS

ABSENT: SUPERVISORS

Chairperson of said Board

ATTEST: _____
Clerk of said Board

Approved as to form:



Assistant County Counsel

Distribution: County Counsel
Public Works Department