



# County of Santa Cruz

## GENERAL SERVICES DEPARTMENT

701 OCEAN STREET, SUITE 330, SANTA CRUZ, CA 95060-4073

(831)454-2210 FAX: (831)454-2710 TDD: (831)454-2123

BOB WATSON, DIRECTOR

August 29, 2002

Agenda: September 10, 2002

Board of Supervisors  
County of Santa Cruz  
701 Ocean Street  
Santa Cruz, CA 95060

### Status Report: Sheriffs Office South County Community Service Center

Dear Members of the Board:

On August 6, 2002, staff advised your Board that engineering plans related to the site preparation at the proposed Sheriffs South County Community Service Center (Mesa Village site) were under review by the project engineer. Due to an emergency, the engineer has not been able to complete the plans in the time frame we had indicated earlier. At this time, the project architect, Teall Messer, anticipates receiving the plans from the engineer no later than September 6<sup>th</sup>. Upon the project architect's review, the plans and specifications will be submitted to General Services to prepare the bid package. Given this time frame, General Services staff anticipate having the bid package for consideration by your Board at your September 24<sup>th</sup> meeting.

Staff work has continued on the project during this time. The modular unit's design and site placement have been completed and have been reviewed and approved by the County Administrative Office, Parks Department and Sheriffs Office (drawings for the floor plan and site placement at the Mesa Village site are attached for your Board's information). General Services is proceeding through regular purchasing processes to competitively bid for the modular unit as designed, due to the advance order time associated with the manufacture and delivery of such a unit.

It is therefore RECOMMENDED that your Board accept this status report on the South County Community Service Center at Mesa Village and direct the General Services Department to return on September 24, 2002 with the plans and specifications related to site preparation for the project.

Very truly yours,

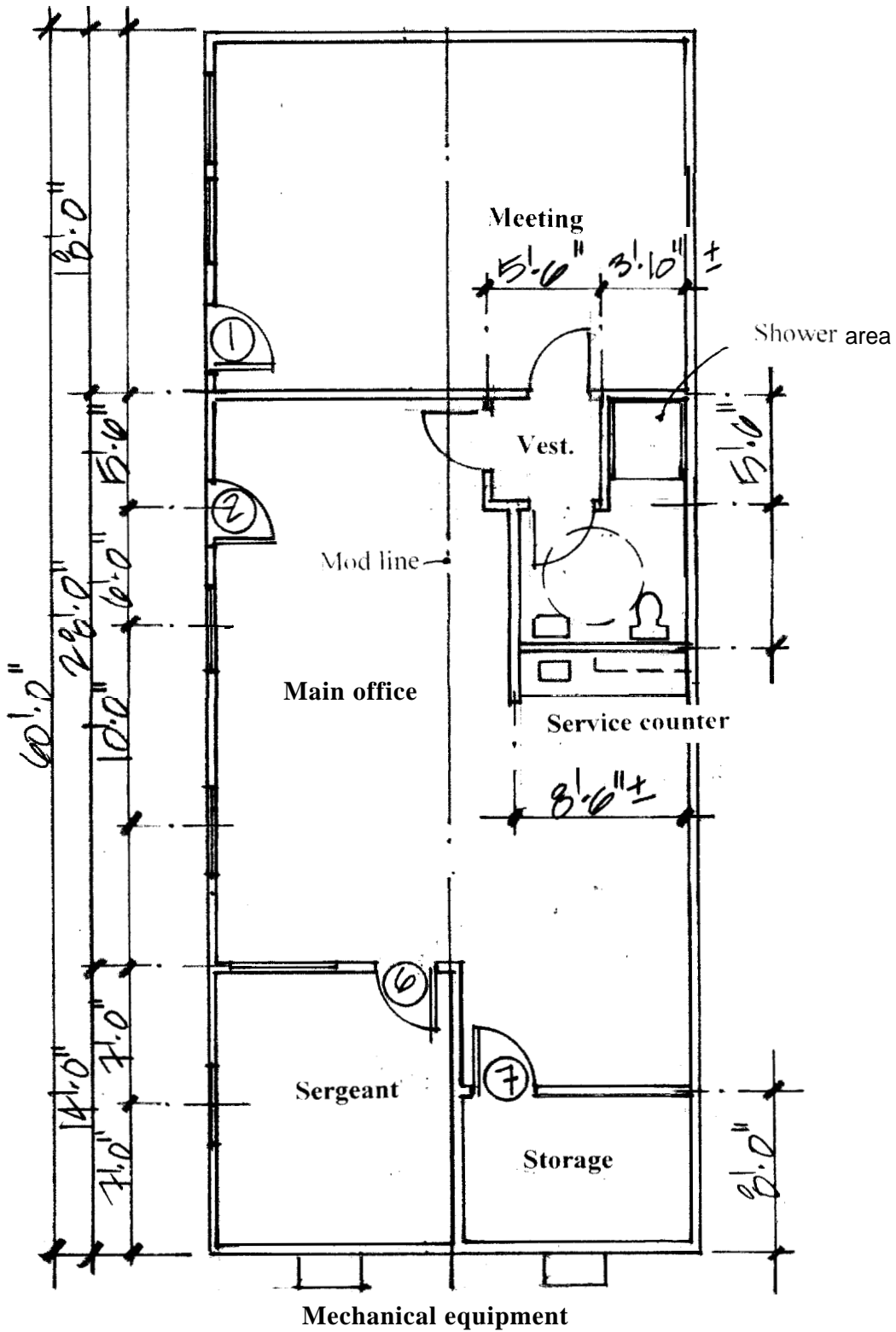
Bob Watson  
General Services Director

RECOMMENDED:

SUSANA MAURIELLO  
County Administrative Officer

Attachments

cc: Sheriffs Office      Teall Messer, Architect  
County Parks



Floor Plan 1/8" = 1'-0"

Mesa Village Park Sheriff's Sub Station  
 30 May 02 - 2 JULY 02, 9 JULY 02  
 Concept Plan 1" = 20'

North  
 ←

