

COUNTY OF SANTA CRUZ
PLANNING DEPARTMENT
701 Ocean Street, 4th Floor
Santa Cruz, CA 95060
(831) 454-2580

NOTICE OF PENDING ACTION

The Planning Department has received the following application. The identified planner may be contacted for specific information on this application.

APPLICATON NUMBER: 161149

APN: 061-371-16

Proposal to extend the expiration date of Development Permit 131090 from June 28, 2016 to June 28, 2017. Requires a time extension to Development Permit 131090. Property located at 3570 Graham Hill Road.

OWNER: County of Santa Cruz

APPLICANT: Santa Cruz County Probation Department

SUPERVISORIAL DISTRICT: 5

PLANNER: Sheila McDaniel, (831) 454-2255

email: sheila.mcdaniel@santacruzcounty.us

Public comments must be received by 5:00 p.m. August 12, 2016.

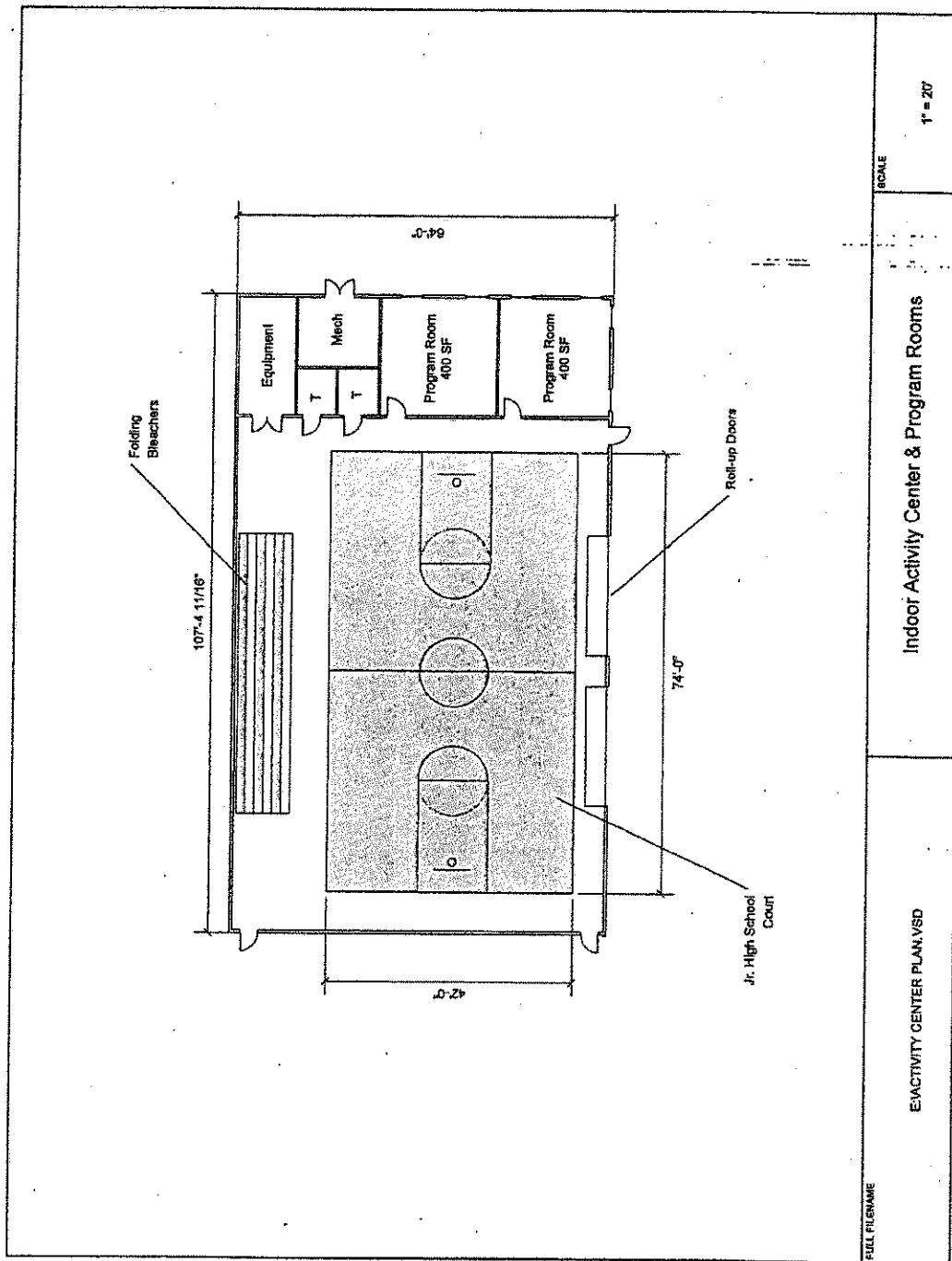
A decision will be made on or shortly after August 19, 2016.

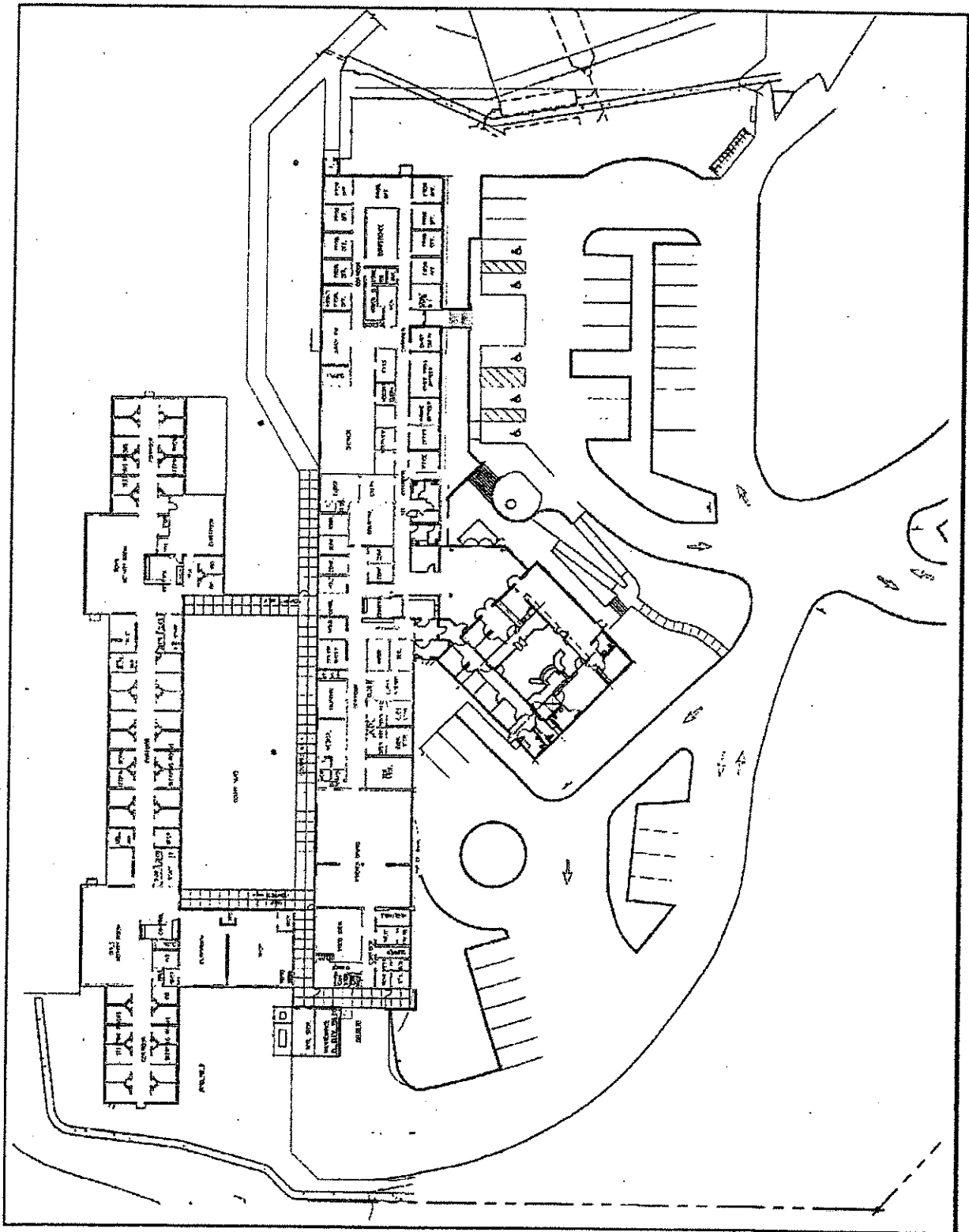
**Appeals of the decision will be accepted until 5:00 p.m.
September 2, 2016.**

Information regarding the appeal process, including required fees, may be obtained by phoning (831) 454-2130 from 1:00 until 4:00 p.m., Monday through Friday.

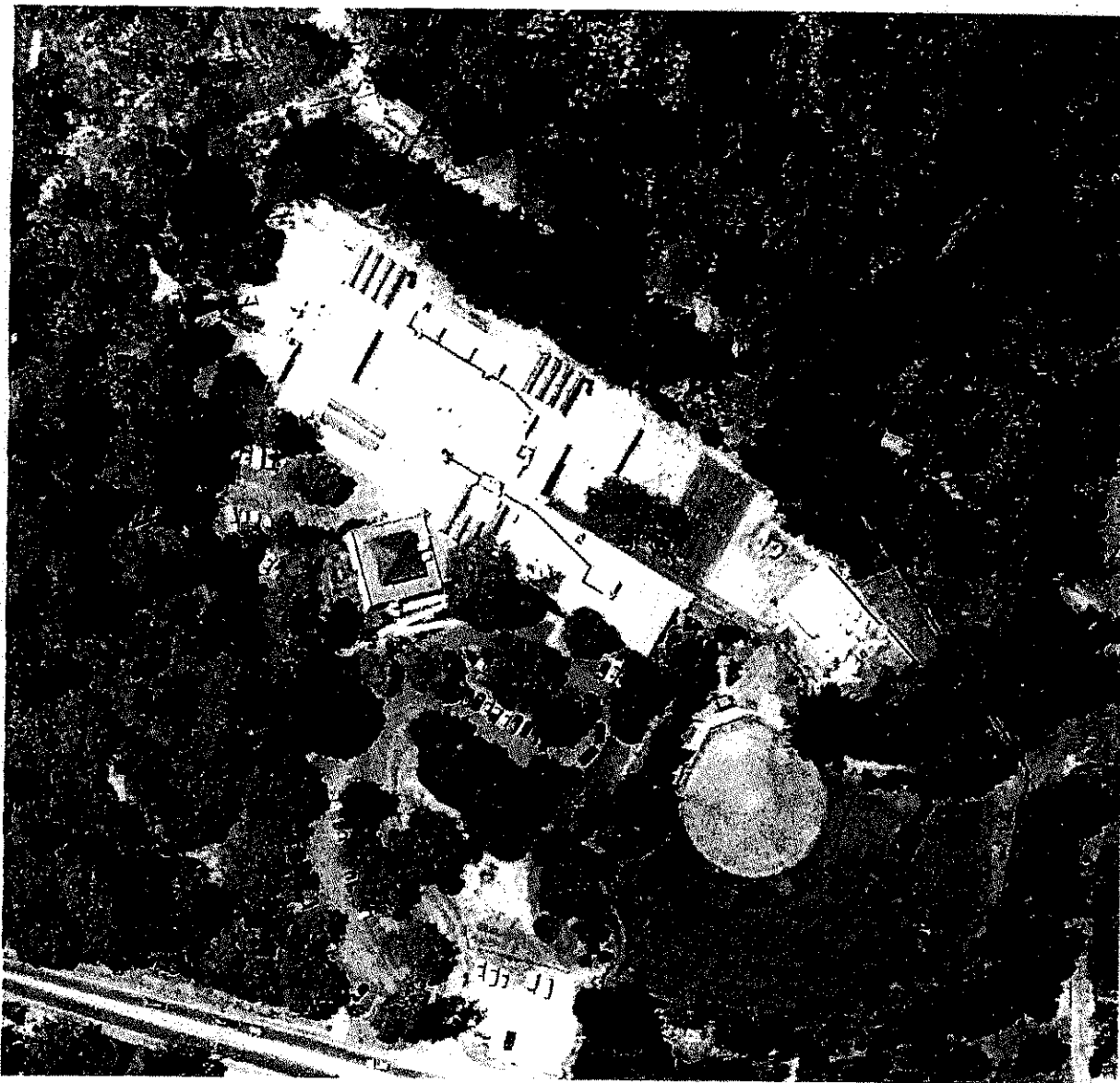
For more information, call the project planner identified above.







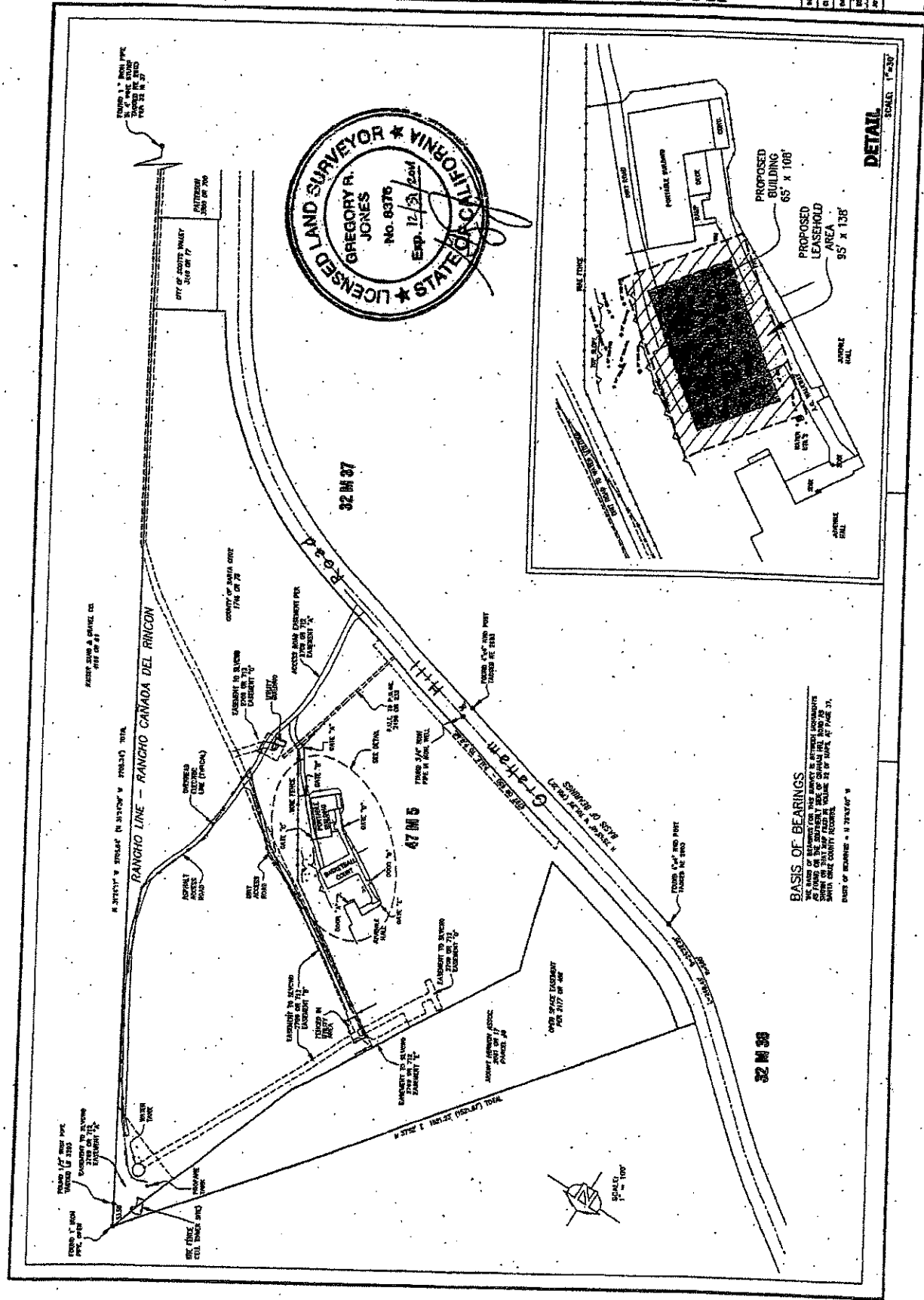
This diagram shows the existing space layout for the Santa Cruz County Juvenile Hall detention facility. The diagram shows the public entrance, parking area, Juvenile Court, Probation Department offices, and detention housing Units A and B. The layout and adjacency of the courtyard is also shown on the diagram.



Aerial Photo of the Santa Cruz County Probation Department Juvenile Hall

This aerial photo highlights the surrounding area and building footprint for the Santa Cruz County Juvenile Hall.

TITLE EXCEPTIONS MAP SANTA CRUZ COUNTY PROBATION CENTER RECREATION YARD LEASEHOLD PROJECT PRO-64080-JUVENILE HALL 5B-81		PROJECT SURVEYOR GREG JONES	COUNTY OF SANTA CRUZ DEPARTMENT OF PUBLIC WORKS
SHEET NO. 1 of 1	DATE 07/12/11	SCALE 1" = 100'	DRAWN BY J. J. JONES



FOR TAX PURPOSES ONLY

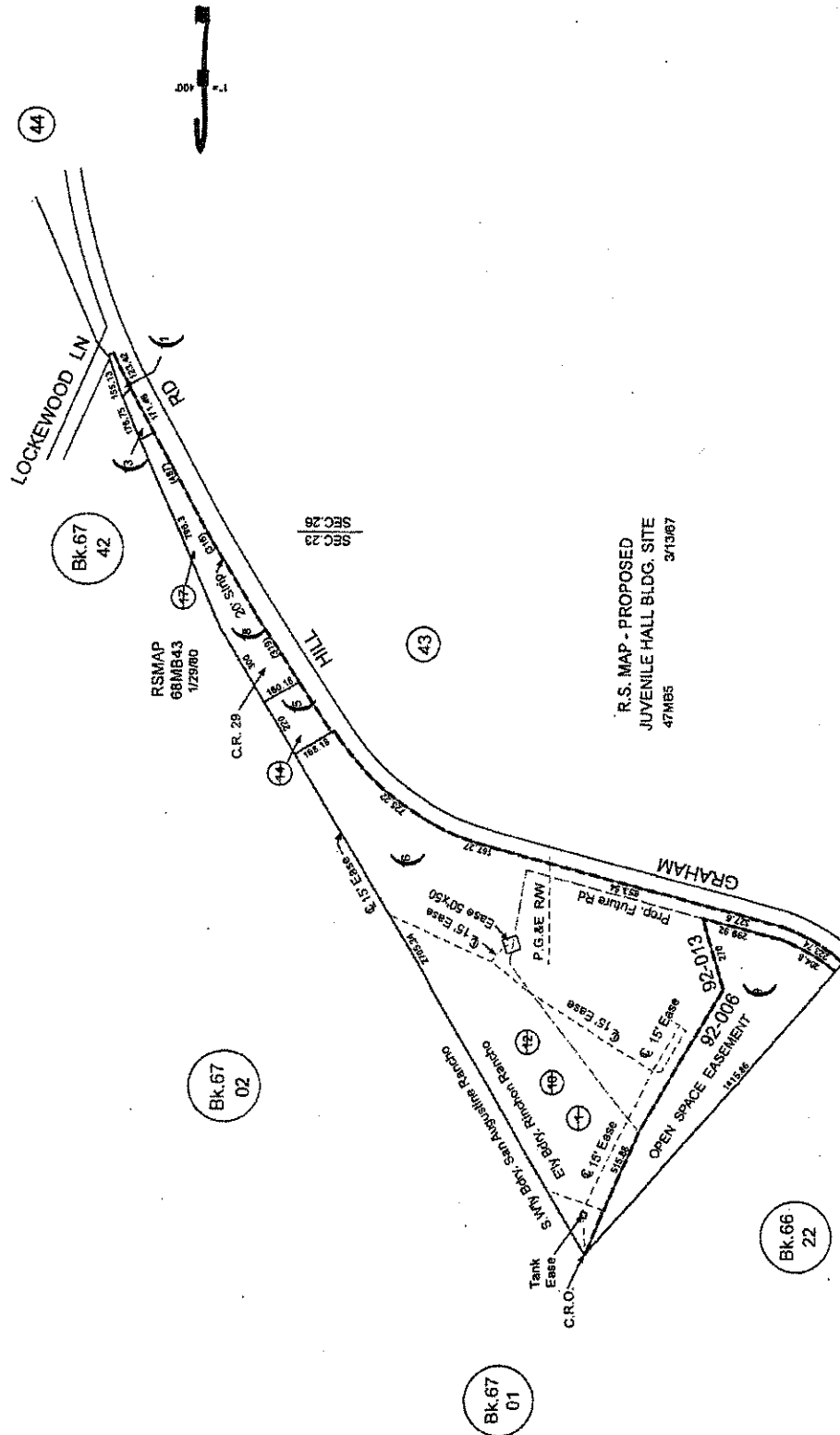
THE ASSESSOR MAKES NO GUARANTEE AS TO MAP ACCURACY NOR ASSUMES ANY LIABILITY FOR OTHER USES. NOT TO BE REPRODUCED. ALL RIGHTS RESERVED.
© COPYRIGHT SANTA CRUZ COUNTY ASSESSOR 1996

POR. RINCON RANCHO

SECS. 23, 25, & 26, T.10S., R.2W., M.D.B & M.

Tax Area Code
92-006 92-013

61-37



Electronically drawn 7/15/06 XSA
Rev. 7/15/05 per 61-64 KSA
Rev. 6/17/03 from (changed page refs.)
Rev. 4/6/03 CB (CA to TCA)
Rev. 3/13/03 LJO (Special Adjustment)
Rev. 3/13/03 LJO (Changed Street Name)

Note - Assessor's Parcel & Block
Numbers Shown in Circles.

Assessor's Map No. 61-37
County of Santa Cruz, Calif.
Jan 1964