

COUNTY OF SANTA CRUZ
PLANNING DEPARTMENT
701 Ocean Street, 4th Floor
Santa Cruz, CA 95060
(831) 454-2580

NOTICE OF PENDING ACTION

The Planning Department has received the following application. The identified planner may be contacted for specific information on this application.

APPLICATON NUMBER: 191267

APN: 095-091-22

Proposal to extend the expiration date of approved development permit 151292. Requires a Time Extension.

Property located on the southwest side of Redwood Lodge Road, approximately 1.5 miles west of the intersection with Soquel-San Jose Road.

OWNER: Teffanie Do

APPLICANT: Chris Sandman

SUPERVISORIAL DISTRICT: 1

PLANNER: Randall Adams, (831) 454-3218

EMAIL: Randall.Adams@santacruzcounty.us

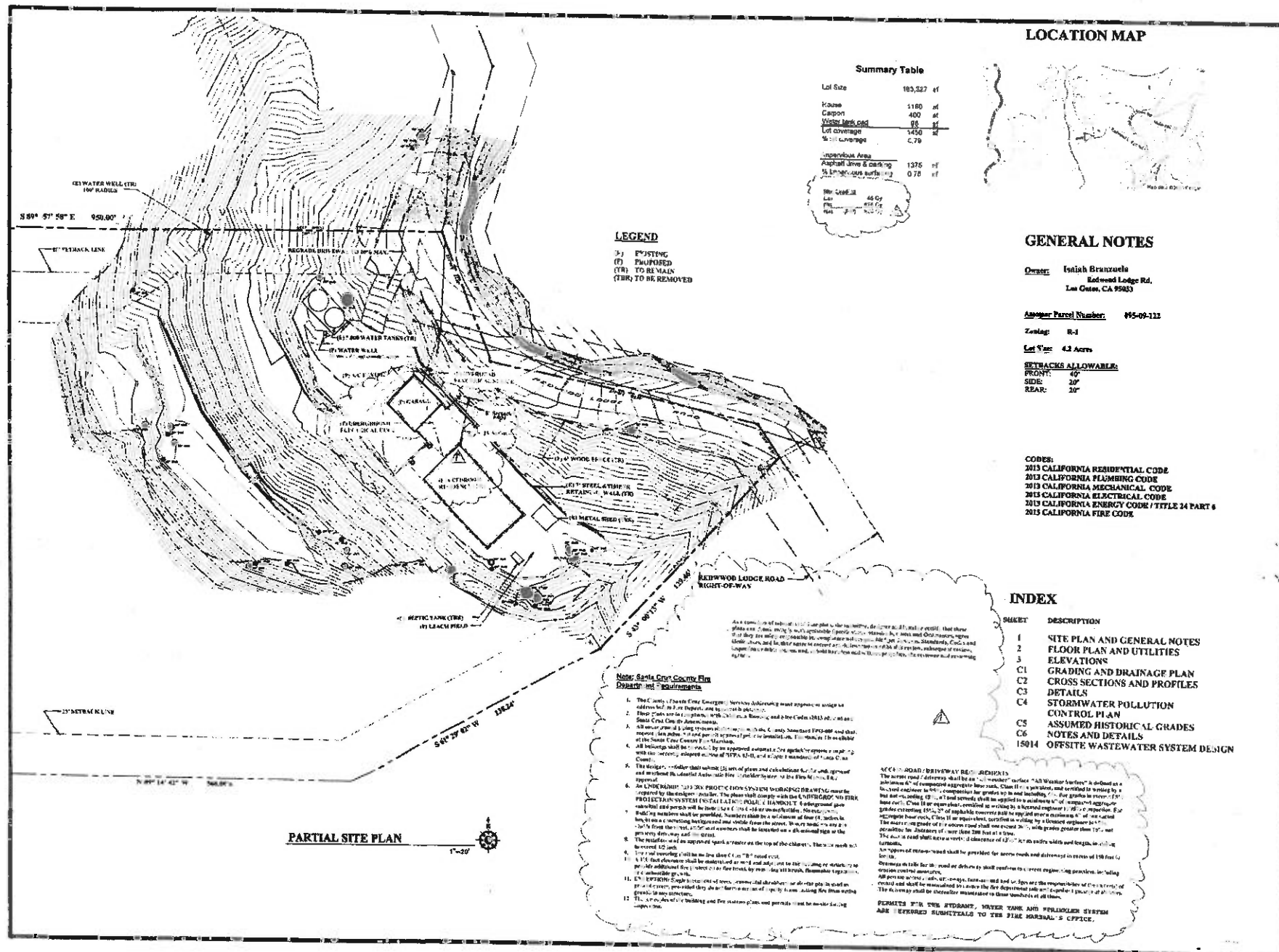
Public comments must be received by 5:00 p.m. November 14, 2019.

A decision will be made on or shortly after November 15, 2019.

Appeals of the decision will be accepted until 5:00 p.m. two weeks after the decision date.

Information regarding the appeal process, including required fees, may be obtained by phoning (831) 454-2130.

For more information, call the project planner identified above.



REVISIONS	BY
1	DA
2	DA
3	DA
4	DA
5	DA
6	DA
7	DA
8	DA
9	DA
10	DA

DAVID A. BREWER
Architect
10000 N. 1st St., Suite 100
Phoenix, AZ 85020
Phone: (602) 998-1111
Fax: (602) 998-1112
www.dabrewer.com

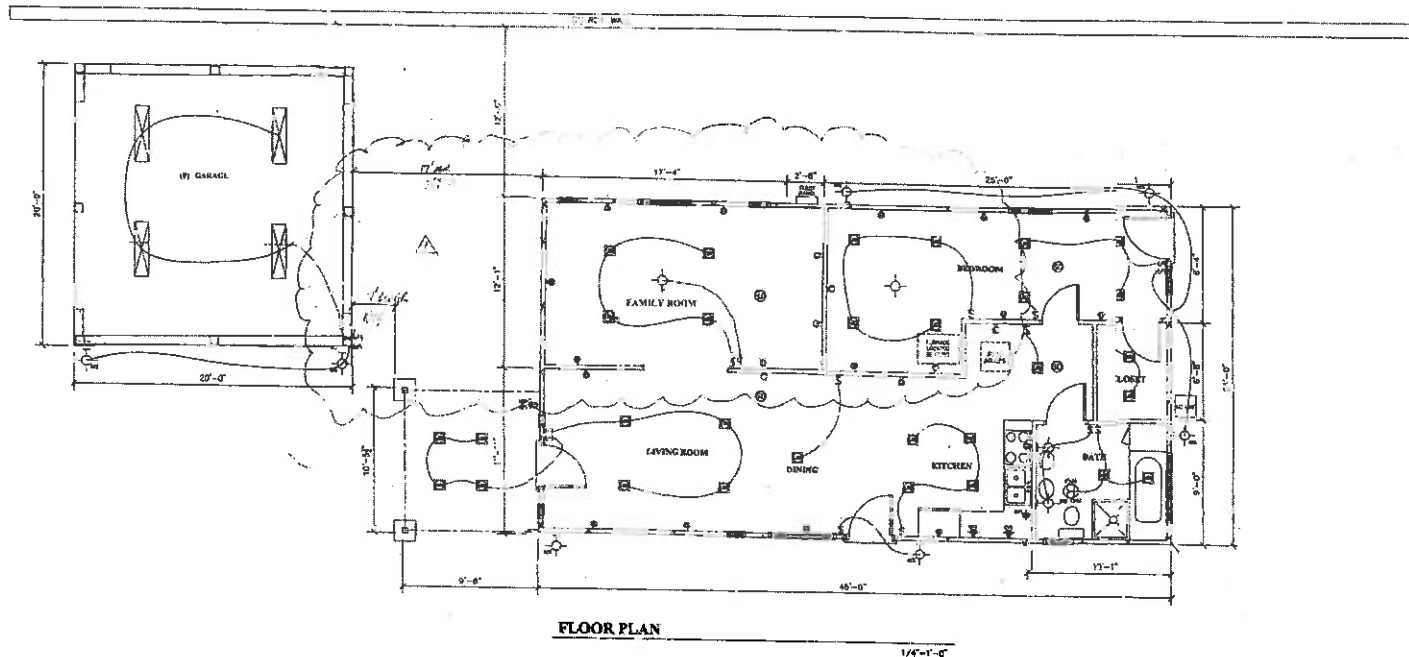


SITE PLAN

APN: 095-09-113
REDWOOD LODGE RD.
LOS GATOS, CA 95033

DATE	BY
4-22-2015	DA
5-13-2015	DA
7-13-2015	DA

1



FLOOR PLAN

2013 CALIFORNIA ELECTRICAL CODE:

Tables, diagrams, and tables are to be used in conjunction with the National Electrical Code, 2011 Edition, and the California Electrical Code, 2013 Edition.

Wherever the word "shall" is used, it is mandatory.

Wherever the word "should" is used, it is advisory.

Wherever the word "may" is used, it is permissive.

Wherever the word "can" is used, it is not a requirement.

Wherever the word "is" is used, it is a statement of fact.

Wherever the word "are" is used, it is a statement of fact.

Wherever the word "be" is used, it is a statement of fact.

Wherever the word "shall" is used, it is mandatory.

Wherever the word "should" is used, it is advisory.

Wherever the word "may" is used, it is permissive.

Wherever the word "can" is used, it is not a requirement.

Wherever the word "is" is used, it is a statement of fact.

Wherever the word "are" is used, it is a statement of fact.

Wherever the word "be" is used, it is a statement of fact.

Wherever the word "shall" is used, it is mandatory.

Wherever the word "should" is used, it is advisory.

Wherever the word "may" is used, it is permissive.

Wherever the word "can" is used, it is not a requirement.

Wherever the word "is" is used, it is a statement of fact.

Wherever the word "are" is used, it is a statement of fact.

Wherever the word "be" is used, it is a statement of fact.

Wherever the word "shall" is used, it is mandatory.

Wherever the word "should" is used, it is advisory.

Wherever the word "may" is used, it is permissive.

Wherever the word "can" is used, it is not a requirement.

Wherever the word "is" is used, it is a statement of fact.

Wherever the word "are" is used, it is a statement of fact.

Wherever the word "be" is used, it is a statement of fact.

Wherever the word "shall" is used, it is mandatory.

Wherever the word "should" is used, it is advisory.

Wherever the word "may" is used, it is permissive.

Wherever the word "can" is used, it is not a requirement.

Wherever the word "is" is used, it is a statement of fact.

2013 CALIFORNIA ELECTRICAL CODE:

Tables, diagrams, and tables are to be used in conjunction with the National Electrical Code, 2011 Edition, and the California Electrical Code, 2013 Edition.

Wherever the word "shall" is used, it is mandatory.

Wherever the word "should" is used, it is advisory.

Wherever the word "may" is used, it is permissive.

Wherever the word "can" is used, it is not a requirement.

Wherever the word "is" is used, it is a statement of fact.

Wherever the word "are" is used, it is a statement of fact.

Wherever the word "be" is used, it is a statement of fact.

Wherever the word "shall" is used, it is mandatory.

Wherever the word "should" is used, it is advisory.

Wherever the word "may" is used, it is permissive.

Wherever the word "can" is used, it is not a requirement.

Wherever the word "is" is used, it is a statement of fact.

Wherever the word "are" is used, it is a statement of fact.

Wherever the word "be" is used, it is a statement of fact.

Wherever the word "shall" is used, it is mandatory.

Wherever the word "should" is used, it is advisory.

Wherever the word "may" is used, it is permissive.

Wherever the word "can" is used, it is not a requirement.

Wherever the word "is" is used, it is a statement of fact.

Wherever the word "are" is used, it is a statement of fact.

Wherever the word "be" is used, it is a statement of fact.

Wherever the word "shall" is used, it is mandatory.

Wherever the word "should" is used, it is advisory.

Wherever the word "may" is used, it is permissive.

Wherever the word "can" is used, it is not a requirement.

Wherever the word "is" is used, it is a statement of fact.

Wherever the word "are" is used, it is a statement of fact.

Wherever the word "be" is used, it is a statement of fact.

Wherever the word "shall" is used, it is mandatory.

Wherever the word "should" is used, it is advisory.

Wherever the word "may" is used, it is permissive.

Wherever the word "can" is used, it is not a requirement.

Wherever the word "is" is used, it is a statement of fact.

TITLE 14 LIGHTING CRITERIA

KITCHEN	High efficiency Min. 90% of installed total wattage must be high efficiency.
BATHROOM GARAGE LIVING ROOM UTILITY ROOM	Min. 1 light in each room must be high efficiency. All other lights high efficiency as mandated by national and state energy codes.
ALL OTHER INTERIOR ROOMS	High efficiency Min. 1 light in each room must be high efficiency. All other lights high efficiency as mandated by national and state energy codes.
OUTDOOR LIGHTING ATTACHED TO BUILDINGS	High efficiency Min. 1 light in each room must be high efficiency. All other lights high efficiency as mandated by national and state energy codes.

ELECTRICAL LEGEND

⊕	Duplex convenience outlet	⊕	Wall mounted incandescent light fixture
⊕	Duplex convenience outlet above counter	⊕	Recessed ceiling mounted incandescent light fixture
⊕	Weatherproof convenience outlet	⊕	IC rated, and air tight (AT)
⊕	Outlet protected by Ground Fault Indicator	⊕	Fluorescent surface mounted light fixture
⊕	Single pole switch	⊕	Recessed compact fluorescent light fixture
⊕	Three way switch (switch-light-switch)	⊕	IC rated, electronic ballast, and air tight (AT)
⊕	3c. Switch with dimmer control	⊕	Ceiling paddle fan or fan light fixture
⊕	Switch with manual on - automatic off	⊕	Exhaust fan
⊕	Switch with manual on - occupancy sensor	⊕	Smoke detector / Carbon Monoxide detector
⊕	Fan/light combination switch	⊕	hard wire w. battery backup
⊕	Switch with Motion Sensor	⊕	Television antenna/cable foot
⊕	Ceiling surface mounted incandescent light fixture	⊕	Telephone jack
⊕	Forum	⊕	CAT. 5 Computer Cable
⊕	Water heater		

REVISIONS	BY
1	DAVID A. BREWER
2	DAVID A. BREWER
3	DAVID A. BREWER
4	DAVID A. BREWER
5	DAVID A. BREWER
6	DAVID A. BREWER
7	DAVID A. BREWER
8	DAVID A. BREWER
9	DAVID A. BREWER
10	DAVID A. BREWER

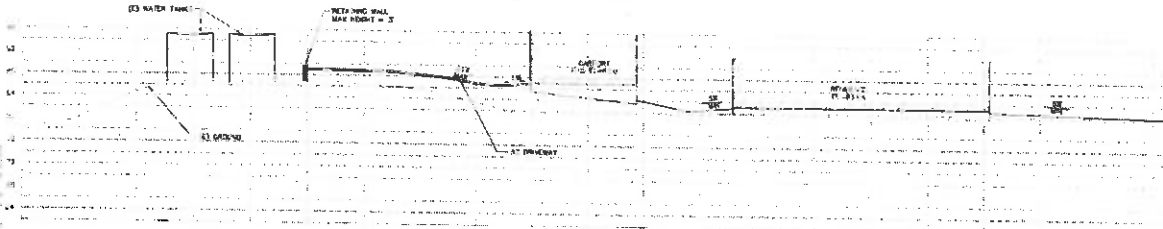
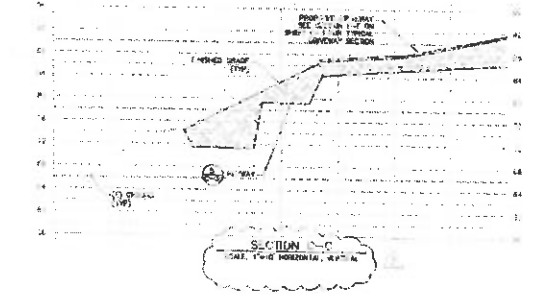
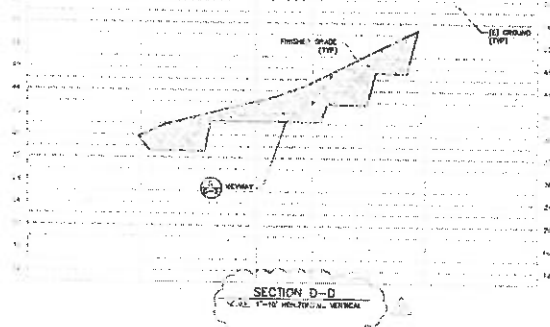
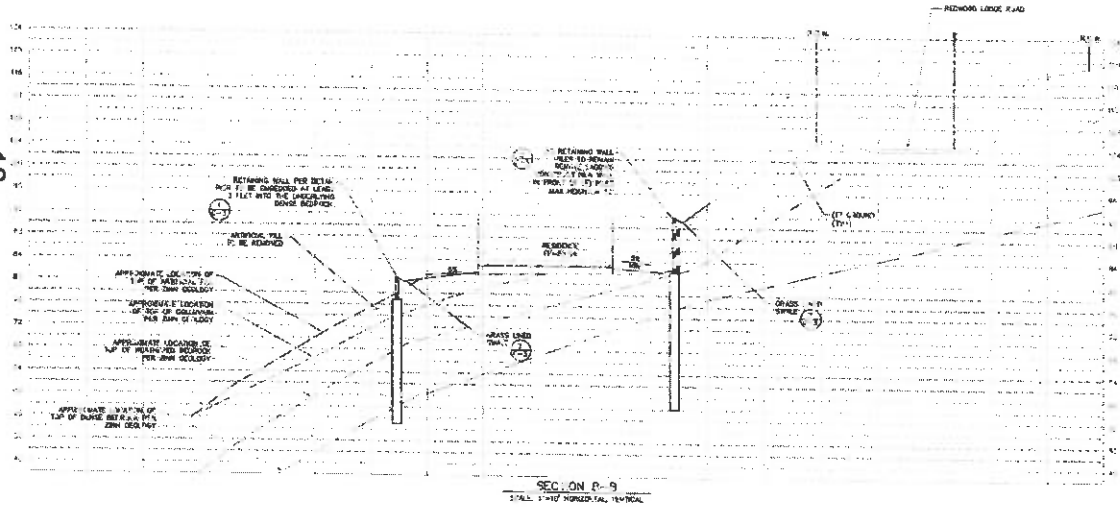
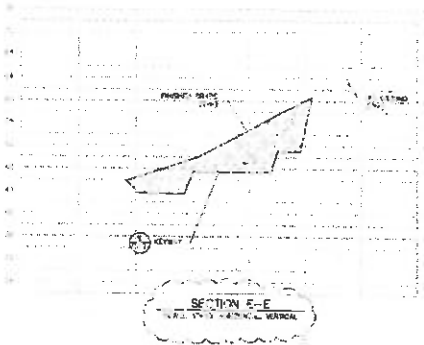
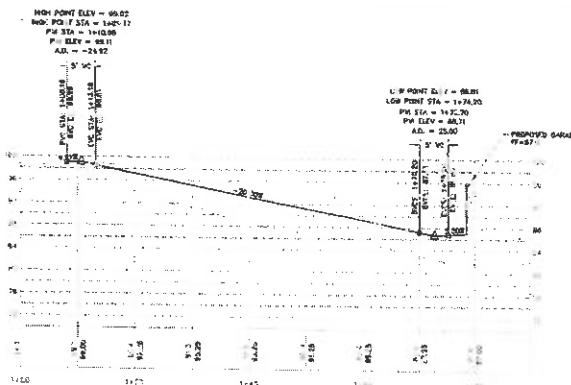
DAVID A. BREWER
241 Maple Road
Folsom, CA 95630
916-441-1477 Fax 916-441-1478
dbrewer@earthlink.net



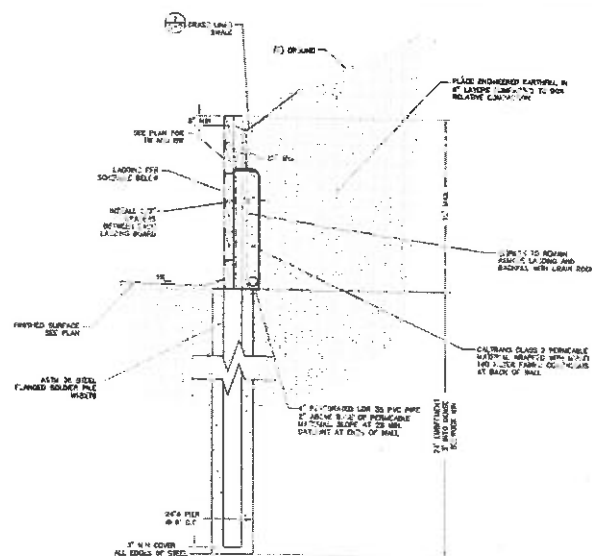
FLOOR PLAN &
UTILITIES

APN: 095-09-122
REDWOOD LODGE RD.
LOS GATOS, CA 95033

DRAWN	CHECKED	DATE
DAVID A. BREWER	DAVID A. BREWER	10/1/13
1/4" = 1'-0"	1/4" = 1'-0"	1/4" = 1'-0"
2		



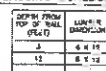
<p>NEW RESUBMITTAL FOR PROJECT NO. 15-017-1</p> <p>DATE: JULY 2015</p> <p>AS SHOWN</p> <p>DATE: CIVIL 2.dwg</p>		<p>PROJECT NO. 15-017-1</p> <p>DATE: JULY 2015</p> <p>AS SHOWN</p> <p>DATE: CIVIL 2.dwg</p>	<p>RI Engineering, Inc.</p> <p>303 Palmdale Blvd., Suite 42-202, Santa Cruz, CA 95060</p> <p>831-425-5971 www.rian-engineering.com</p>
---	--	---	--



CHAIN FROM TOP OF WALL (FEET)	LUMBER DIMENSIONS
0	5 x 12
8	4 x 6

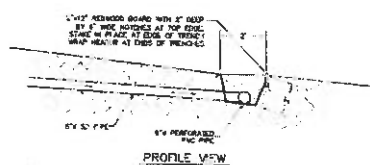
NOTE: ALL LAGGING LUMBER
SHALL BE REDWOOD NO. 2 OR
PRESSURE TREATED DOUGLASS
FIR-LATCH R/L 1 OR BETTER

607



NOTE: ALL LOADS LISTED

44



PROFILE VIEW



100



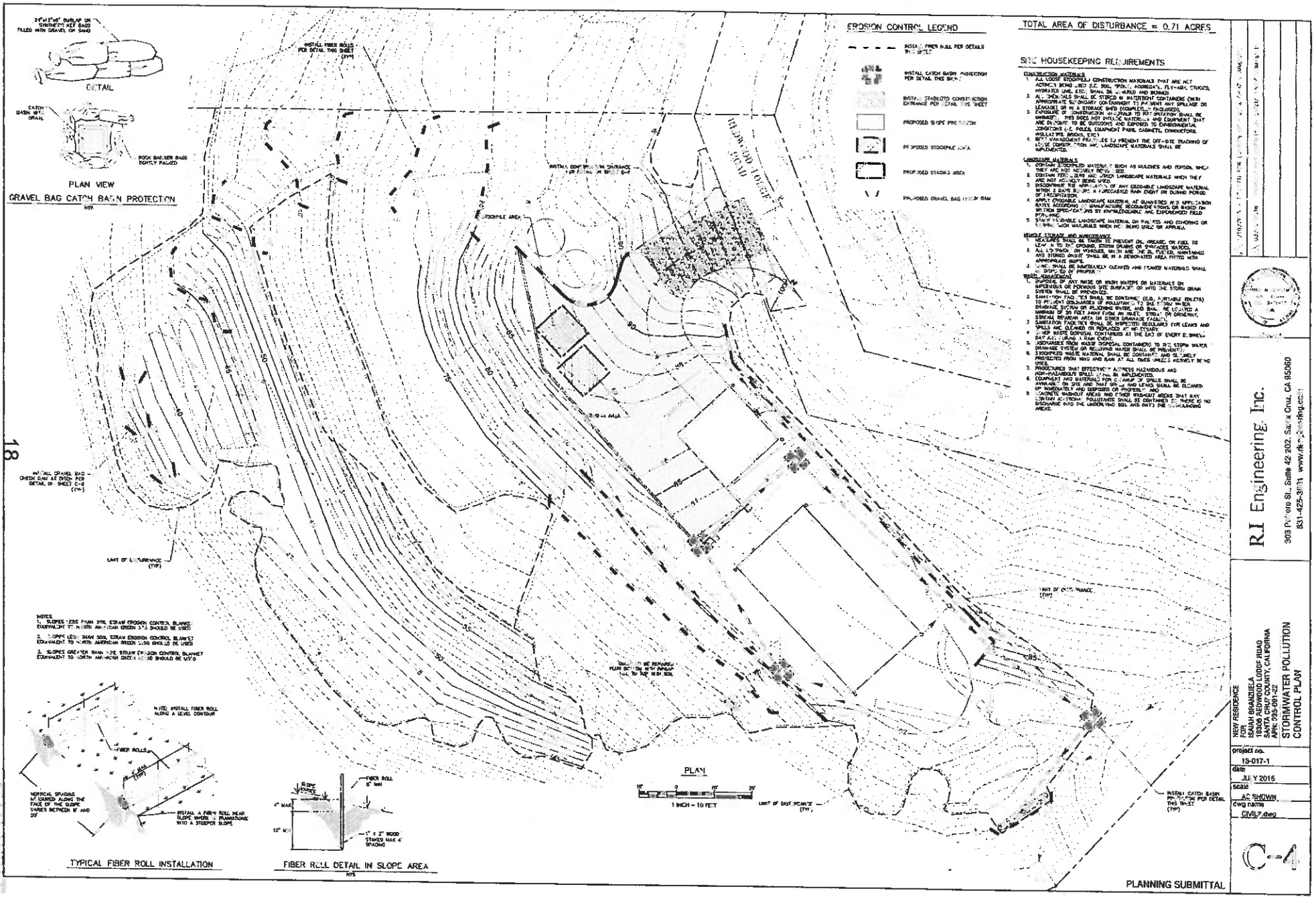
GRASS LINED SWALE DETAIL



KQ



TYPICAL DRIVEWAY SECTION F-F



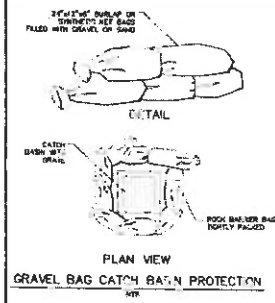
EROSION CONTROL LEGEND

- INSTALL FIBER ROLL PER DETAIL C-4
- INSTALL CATCH BASIN PROTECTION PER DETAIL C-4
- INSTALL STABILIZED CONSTRUCTION ENTRANCE PER DETAIL C-4
- PROPOSED SLOPE PROTECTION
- PROPOSED STOCKPILE AREA
- PROPOSED STOCKPILE AREA
- PROPOSED STOCKPILE AREA

TOTAL AREA OF DISTURBANCE = 0.71 ACRES

STORMWATER REQUIREMENTS

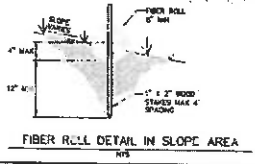
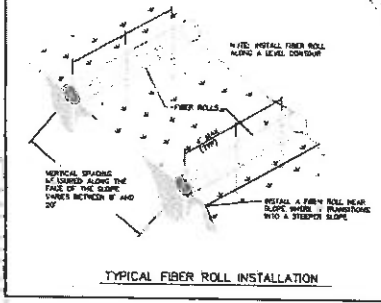
- CONSTRUCTION MATERIALS**
1. ALL LOOSE STOCKPILE CONSTRUCTION MATERIALS THAT ARE NOT ACTUALLY BOUND (E.G. SOIL, GRAVEL, ASPHALT, FLY-ASH, CRUSHED, WASTED LIME, ETC.) SHALL BE WIND- AND WAVE-PROTECTED.
 2. ALL MATERIALS SHALL BE STORED IN WATERPROOF CONTAINERS (WHEN APPROPRIATE) OR COVERED TO PREVENT WIND-OR WAVE-INDUCED SPILLAGE OR EROSION OF A STORAGE AREA COMPLETELY ENCLOSED.
 3. CONSTRUCTION MATERIALS SHALL BE STORED TO PREVENT SPILLAGE OR EROSION OF A STORAGE AREA COMPLETELY ENCLOSED.
 4. ALL MATERIALS SHALL BE STORED TO PREVENT SPILLAGE OR EROSION OF A STORAGE AREA COMPLETELY ENCLOSED.
 5. ALL MATERIALS SHALL BE STORED TO PREVENT SPILLAGE OR EROSION OF A STORAGE AREA COMPLETELY ENCLOSED.
- LANDSCAPE MATERIALS**
1. ALL LANDSCAPE MATERIALS (E.G. MULCHES AND FERTILIZERS) SHALL BE STORED IN WATERPROOF CONTAINERS (WHEN APPROPRIATE) OR COVERED TO PREVENT WIND-OR WAVE-INDUCED SPILLAGE OR EROSION OF A STORAGE AREA COMPLETELY ENCLOSED.
 2. ALL LANDSCAPE MATERIALS SHALL BE STORED TO PREVENT SPILLAGE OR EROSION OF A STORAGE AREA COMPLETELY ENCLOSED.
 3. ALL LANDSCAPE MATERIALS SHALL BE STORED TO PREVENT SPILLAGE OR EROSION OF A STORAGE AREA COMPLETELY ENCLOSED.
 4. ALL LANDSCAPE MATERIALS SHALL BE STORED TO PREVENT SPILLAGE OR EROSION OF A STORAGE AREA COMPLETELY ENCLOSED.
 5. ALL LANDSCAPE MATERIALS SHALL BE STORED TO PREVENT SPILLAGE OR EROSION OF A STORAGE AREA COMPLETELY ENCLOSED.
- STORMWATER REQUIREMENTS**
1. ALL STORMWATER SHALL BE COLLECTED AND STORED IN A WATERPROOF CONTAINER (WHEN APPROPRIATE) OR COVERED TO PREVENT WIND-OR WAVE-INDUCED SPILLAGE OR EROSION OF A STORAGE AREA COMPLETELY ENCLOSED.
 2. ALL STORMWATER SHALL BE COLLECTED AND STORED IN A WATERPROOF CONTAINER (WHEN APPROPRIATE) OR COVERED TO PREVENT WIND-OR WAVE-INDUCED SPILLAGE OR EROSION OF A STORAGE AREA COMPLETELY ENCLOSED.
 3. ALL STORMWATER SHALL BE COLLECTED AND STORED IN A WATERPROOF CONTAINER (WHEN APPROPRIATE) OR COVERED TO PREVENT WIND-OR WAVE-INDUCED SPILLAGE OR EROSION OF A STORAGE AREA COMPLETELY ENCLOSED.
 4. ALL STORMWATER SHALL BE COLLECTED AND STORED IN A WATERPROOF CONTAINER (WHEN APPROPRIATE) OR COVERED TO PREVENT WIND-OR WAVE-INDUCED SPILLAGE OR EROSION OF A STORAGE AREA COMPLETELY ENCLOSED.
 5. ALL STORMWATER SHALL BE COLLECTED AND STORED IN A WATERPROOF CONTAINER (WHEN APPROPRIATE) OR COVERED TO PREVENT WIND-OR WAVE-INDUCED SPILLAGE OR EROSION OF A STORAGE AREA COMPLETELY ENCLOSED.



18

NOTES:

1. SLOPES LESS THAN 3% SHALL BE EROSION CONTROL BLANKET EQUIVALENT TO NORTH ANCHOR SHEET C-4 SHOULD BE USED.
2. SLOPES LESS THAN 3% SHALL BE EROSION CONTROL BLANKET EQUIVALENT TO NORTH ANCHOR SHEET C-4 SHOULD BE USED.
3. SLOPES GREATER THAN 3% SHALL BE EROSION CONTROL BLANKET EQUIVALENT TO NORTH ANCHOR SHEET C-4 SHOULD BE USED.



RI Engineering, Inc.

303 FV, 425 St. Suite 402, Santa Cruz, CA 95060

831-425-8171, www.ri-engineering.com

NEW RESUBMITTAL FOR ISAN BRANDELA STORMWATER POLLUTION CONTROL PLAN

project no. 15-017-1

date JULY 2015

scale AS SHOWN

dwg name CIVIL.dwg

C-4

GENERAL NOTES

1. THE CONTRACTOR SHALL HAVE A DETAILED AND THOROUGH KNOWLEDGE OF THESE PLANS IN SHOW EXISTENCE PRIOR TO ANY WORK ON THE JOB. THE CONTRACTOR IS TO VERIFY ALL EXISTING CONSTRUCTION CONDITIONS AND IS TO CORRECTLY IDENTIFY AND REPORT TO THE COUNTY ENGINEER ANY DISCREPANCIES FOR THE COMPLETION OF THE PROJECT. IT IS ALSO TO UNDERSTAND THAT ANY FAILURE OF CONSTRUCTION NOT FULLY SHOWN OR DETAIL SHALL BE OF THE SAME TYPE AS SHOWN FOR SIMILAR CONDITIONS.
2. THE CONTRACTOR SHALL IMMEDIATELY REPORT TO THE COUNTY ENGINEER ANY DISCREPANCY OR DISCREPANCY IN THE PLANS OR IN THE LOCATION OF THE PROJECT. THE CONTRACTOR SHALL BE RESPONSIBLE FOR THE CORRECTION OF THE PROJECT. THE CONTRACTOR SHALL BE RESPONSIBLE FOR THE CORRECTION OF THE PROJECT. THE CONTRACTOR SHALL BE RESPONSIBLE FOR THE CORRECTION OF THE PROJECT.
3. ANY WORK DONE IN CONNECTION WITH THESE PLANS SHALL BE APPROVED BY THE COUNTY ENGINEER. ANY WORK DONE IN CONNECTION WITH THESE PLANS SHALL BE APPROVED BY THE COUNTY ENGINEER. ANY WORK DONE IN CONNECTION WITH THESE PLANS SHALL BE APPROVED BY THE COUNTY ENGINEER.
4. ALL CONSTRUCTION SHALL CONFORM TO THE APPLICABLE PROVISIONS OF THE STATE OF CALIFORNIA STANDARD SPECIFICATIONS FOR HIGHWAYS, LATEST EDITION, THE COUNTY OF SANTA CRUZ DESIGN CRITERIA AND ALL APPLICABLE CODES AND ORDINANCES.
5. THE LOCATION OF EXISTING UTILITIES AS SHOWN ON THE PLANS HAVE BEEN OBTAINED FROM RECORD DRAWINGS AND MAY NOT REPRESENT THE LOCATION. IT IS THE CONTRACTOR'S RESPONSIBILITY TO VERIFY THE LOCATION AND DEPTH OF THESE UTILITIES PRIOR TO CONSTRUCTION AND TO NOTIFY THE PROJECT ENGINEER IN CASE OF DISCREPANCY.
6. THE CONTRACTOR SHALL SECURE ALL REQUIRED CONSTRUCTION PERMITS FROM THE COUNTY OF SANTA CRUZ PRIOR TO THE START OF WORK.
7. THE CONTRACTOR SHALL BE RESPONSIBLE FOR THE CORRECTION OF THE PROJECT. THE CONTRACTOR SHALL BE RESPONSIBLE FOR THE CORRECTION OF THE PROJECT. THE CONTRACTOR SHALL BE RESPONSIBLE FOR THE CORRECTION OF THE PROJECT.
8. THE CONTRACTOR SHALL NOTIFY THE COUNTY ENGINEER IMMEDIATELY OF ANY DISCREPANCY OR DISCREPANCY IN THE PLANS OR IN THE LOCATION OF THE PROJECT. THE CONTRACTOR SHALL BE RESPONSIBLE FOR THE CORRECTION OF THE PROJECT. THE CONTRACTOR SHALL BE RESPONSIBLE FOR THE CORRECTION OF THE PROJECT.
9. WORK SHALL BE LIMITED TO 8:00 AM TO 5:00 PM WEEKDAYS. WORK DONE OUTSIDE THESE HOURS SHALL BE SUBJECT TO THE DISCRETION OF THE COUNTY ENGINEER.
10. ALL PUBLIC (P.D.) REFERENCES SHALL BE SPECIFICALLY REFERRED TO SHOWN DRAWINGS IN THE COUNTY OF SANTA CRUZ DESIGN CRITERIA.
11. NO LONG TERM OR SHORT TERM EXCAVATIONS SHALL TAKE PLACE BETWEEN OCTOBER 15 AND JUNE 15 UNLESS THE PLANNING DEPARTMENT APPROVES A SPECIAL EROSION CONTROL PLAN.
12. BETWEEN OCTOBER 15 AND JUNE 15, EXCAVATIONS SHALL BE PROTECTED FROM EROSION AT ALL TIMES. DURING CONSTRUCTION, EACH EXCAVATION SHALL BE COVERED WITH A DRAINAGE SYSTEM OR OTHER MEANS OF EROSION CONTROL. THE CONTRACTOR SHALL BE RESPONSIBLE FOR THE CORRECTION OF THE PROJECT. THE CONTRACTOR SHALL BE RESPONSIBLE FOR THE CORRECTION OF THE PROJECT.
13. THE CONTRACTOR SHALL NOTIFY THE COUNTY ENGINEER IMMEDIATELY OF ANY DISCREPANCY OR DISCREPANCY IN THE PLANS OR IN THE LOCATION OF THE PROJECT. THE CONTRACTOR SHALL BE RESPONSIBLE FOR THE CORRECTION OF THE PROJECT. THE CONTRACTOR SHALL BE RESPONSIBLE FOR THE CORRECTION OF THE PROJECT.
14. THE CONTRACTOR SHALL BE RESPONSIBLE FOR THE CORRECTION OF THE PROJECT. THE CONTRACTOR SHALL BE RESPONSIBLE FOR THE CORRECTION OF THE PROJECT. THE CONTRACTOR SHALL BE RESPONSIBLE FOR THE CORRECTION OF THE PROJECT.
15. THE CONTRACTOR SHALL BE RESPONSIBLE FOR THE CORRECTION OF THE PROJECT. THE CONTRACTOR SHALL BE RESPONSIBLE FOR THE CORRECTION OF THE PROJECT. THE CONTRACTOR SHALL BE RESPONSIBLE FOR THE CORRECTION OF THE PROJECT.
16. THE CONTRACTOR SHALL BE RESPONSIBLE FOR THE CORRECTION OF THE PROJECT. THE CONTRACTOR SHALL BE RESPONSIBLE FOR THE CORRECTION OF THE PROJECT. THE CONTRACTOR SHALL BE RESPONSIBLE FOR THE CORRECTION OF THE PROJECT.
17. THE CONTRACTOR SHALL BE RESPONSIBLE FOR THE CORRECTION OF THE PROJECT. THE CONTRACTOR SHALL BE RESPONSIBLE FOR THE CORRECTION OF THE PROJECT. THE CONTRACTOR SHALL BE RESPONSIBLE FOR THE CORRECTION OF THE PROJECT.
18. THE CONTRACTOR SHALL BE RESPONSIBLE FOR THE CORRECTION OF THE PROJECT. THE CONTRACTOR SHALL BE RESPONSIBLE FOR THE CORRECTION OF THE PROJECT. THE CONTRACTOR SHALL BE RESPONSIBLE FOR THE CORRECTION OF THE PROJECT.
19. THE CONTRACTOR SHALL BE RESPONSIBLE FOR THE CORRECTION OF THE PROJECT. THE CONTRACTOR SHALL BE RESPONSIBLE FOR THE CORRECTION OF THE PROJECT. THE CONTRACTOR SHALL BE RESPONSIBLE FOR THE CORRECTION OF THE PROJECT.
20. ANY EXISTING UTILITIES THAT ARE REQUIRED TO BE RELOCATED AS A PART OF THIS CONSTRUCTION SHALL BE RELOCATED AT THE OWNER'S EXPENSE.

EROSION CONTROL MEASURES

1. EROSION IS TO BE CONTROLLED AT ALL TIMES ALONG EXPOSED SLOPES. MEASURES SHOWN ARE TO BE MAINTAINED AT ALL TIMES BY THE CONTRACTOR.
2. EROSION CONTROL MEASURES SHALL BE MAINTAINED AT ALL TIMES BY THE CONTRACTOR. EROSION CONTROL MEASURES SHALL BE MAINTAINED AT ALL TIMES BY THE CONTRACTOR.
3. THE CONTRACTOR SHALL BE RESPONSIBLE FOR THE CORRECTION OF THE PROJECT. THE CONTRACTOR SHALL BE RESPONSIBLE FOR THE CORRECTION OF THE PROJECT. THE CONTRACTOR SHALL BE RESPONSIBLE FOR THE CORRECTION OF THE PROJECT.
4. ALL EXPOSED SLOPES SHALL BE COVERED WITH A DRAINAGE SYSTEM OR OTHER MEANS OF EROSION CONTROL. THE CONTRACTOR SHALL BE RESPONSIBLE FOR THE CORRECTION OF THE PROJECT. THE CONTRACTOR SHALL BE RESPONSIBLE FOR THE CORRECTION OF THE PROJECT.
5. THE CONTRACTOR SHALL BE RESPONSIBLE FOR THE CORRECTION OF THE PROJECT. THE CONTRACTOR SHALL BE RESPONSIBLE FOR THE CORRECTION OF THE PROJECT. THE CONTRACTOR SHALL BE RESPONSIBLE FOR THE CORRECTION OF THE PROJECT.
6. THE CONTRACTOR SHALL BE RESPONSIBLE FOR THE CORRECTION OF THE PROJECT. THE CONTRACTOR SHALL BE RESPONSIBLE FOR THE CORRECTION OF THE PROJECT. THE CONTRACTOR SHALL BE RESPONSIBLE FOR THE CORRECTION OF THE PROJECT.
7. THE CONTRACTOR SHALL BE RESPONSIBLE FOR THE CORRECTION OF THE PROJECT. THE CONTRACTOR SHALL BE RESPONSIBLE FOR THE CORRECTION OF THE PROJECT. THE CONTRACTOR SHALL BE RESPONSIBLE FOR THE CORRECTION OF THE PROJECT.

EXPOSED SLOPE MEASURES

1. COVER ALL EXPOSED SLOPES.
2. STABILIZE EXPOSED SLOPES WITH SOIL.
3. COVER EXPOSED SLOPES WITH SOIL.

STORM DRAIN SYSTEM MAINTENANCE

1. THE CONTRACTOR SHALL BE RESPONSIBLE FOR THE MAINTENANCE OF THE STORM DRAIN SYSTEM. THE CONTRACTOR SHALL BE RESPONSIBLE FOR THE MAINTENANCE OF THE STORM DRAIN SYSTEM.
2. THE CONTRACTOR SHALL BE RESPONSIBLE FOR THE MAINTENANCE OF THE STORM DRAIN SYSTEM. THE CONTRACTOR SHALL BE RESPONSIBLE FOR THE MAINTENANCE OF THE STORM DRAIN SYSTEM.
3. THE CONTRACTOR SHALL BE RESPONSIBLE FOR THE MAINTENANCE OF THE STORM DRAIN SYSTEM. THE CONTRACTOR SHALL BE RESPONSIBLE FOR THE MAINTENANCE OF THE STORM DRAIN SYSTEM.

STORM DRAINAGE NOTES

1. THE CONTRACTOR SHALL BE RESPONSIBLE FOR THE MAINTENANCE OF THE STORM DRAIN SYSTEM. THE CONTRACTOR SHALL BE RESPONSIBLE FOR THE MAINTENANCE OF THE STORM DRAIN SYSTEM.
2. THE CONTRACTOR SHALL BE RESPONSIBLE FOR THE MAINTENANCE OF THE STORM DRAIN SYSTEM. THE CONTRACTOR SHALL BE RESPONSIBLE FOR THE MAINTENANCE OF THE STORM DRAIN SYSTEM.
3. THE CONTRACTOR SHALL BE RESPONSIBLE FOR THE MAINTENANCE OF THE STORM DRAIN SYSTEM. THE CONTRACTOR SHALL BE RESPONSIBLE FOR THE MAINTENANCE OF THE STORM DRAIN SYSTEM.

POST CONSTRUCTION STORM DRAIN SYSTEM MAINTENANCE SCHEDULE

ITEM	FREQUENCY	INSPECTION	REPAIR
GRAVEL BAGS	ANNUAL	1. INSPECT BAGS FOR DAMAGE 2. REPLACE DAMAGED BAGS	1. REPLACE DAMAGED BAGS 2. REPLACE DAMAGED BAGS
CHAINS	ANNUAL	1. INSPECT CHAINS FOR DAMAGE 2. REPLACE DAMAGED CHAINS	1. REPLACE DAMAGED CHAINS 2. REPLACE DAMAGED CHAINS
GRAVEL BAGS	ANNUAL	1. INSPECT BAGS FOR DAMAGE 2. REPLACE DAMAGED BAGS	1. REPLACE DAMAGED BAGS 2. REPLACE DAMAGED BAGS

CONSTRUCTION ENTRANCE DETAIL

THIS DETAIL IS TO BE USED FOR ALL CONSTRUCTION ENTRANCES.

ANCHOR DETAIL

TYPICAL SLOPE SOIL STABILIZATION

NOTES:
1. SLOPE SURFACE SHALL BE FREE OF ROCKS, LOGS, LIMBS AND BRANCHES. MATERIALS SHALL HAVE GOOD
2. SLOPE SURFACE SHALL BE FREE OF ROCKS, LOGS, LIMBS AND BRANCHES. MATERIALS SHALL HAVE GOOD
3. SLOPE SURFACE SHALL BE FREE OF ROCKS, LOGS, LIMBS AND BRANCHES. MATERIALS SHALL HAVE GOOD

SECTION

GRAVEL BAG CHECK DAM

THIS DETAIL IS TO BE USED FOR ALL GRAVEL BAG CHECK DAMS.

RI Engineering, Inc.
303 Potrero St., Suite 402, Santa Cruz, CA 95060
831-425-1111 www.ri-engineering.com

NOTES AND DETAILS
NEW RESUBMITTAL FOR
SANTA CRUZ COUNTY, CALIFORNIA
APR. 1995-09-12

PROJECT NO.
15-017-1
DATE
JULY 2015
SCALE
AS SHOWN
DRAWN BY
CIVIL 2

C-6

PLANNING SUBMITTAL

An on-site water table pump and diffusing system is proposed to serve a one-acre pond constructed on Rindwood Road, 1.71 Acres, in Santa Cruz County, California. An alternative A-1 RT treatment steps will be provided as dispersal to a creek/ditch is proposed.

[illegible]

1. Areas 4, 5, 6, 7, 8, 9, 10, 11, 12, 13, 14, 15, 16, 17, 18, 19, 20, 21, 22, 23, 24, 25, 26, 27, 28, 29, 30, 31, 32, 33, 34, 35, 36, 37, 38, 39, 40, 41, 42, 43, 44, 45, 46, 47, 48, 49, 50, 51, 52, 53, 54, 55, 56, 57, 58, 59, 60, 61, 62, 63, 64, 65, 66, 67, 68, 69, 70, 71, 72, 73, 74, 75, 76, 77, 78, 79, 80, 81, 82, 83, 84, 85, 86, 87, 88, 89, 90, 91, 92, 93, 94, 95, 96, 97, 98, 99, 100, 101, 102, 103, 104, 105, 106, 107, 108, 109, 110, 111, 112, 113, 114, 115, 116, 117, 118, 119, 120, 121, 122, 123, 124, 125, 126, 127, 128, 129, 130, 131, 132, 133, 134, 135, 136, 137, 138, 139, 140, 141, 142, 143, 144, 145, 146, 147, 148, 149, 150, 151, 152, 153, 154, 155, 156, 157, 158, 159, 160, 161, 162, 163, 164, 165, 166, 167, 168, 169, 170, 171, 172, 173, 174, 175, 176, 177, 178, 179, 180, 181, 182, 183, 184, 185, 186, 187, 188, 189, 190, 191, 192, 193, 194, 195, 196, 197, 198, 199, 200, 201, 202, 203, 204, 205, 206, 207, 208, 209, 210, 211, 212, 213, 214, 215, 216, 217, 218, 219, 220, 221, 222, 223, 224, 225, 226, 227, 228, 229, 230, 231, 232, 233, 234, 235, 236, 237, 238, 239, 240, 241, 242, 243, 244, 245, 246, 247, 248, 249, 250, 251, 252, 253, 254, 255, 256, 257, 258, 259, 260, 261, 262, 263, 264, 265, 266, 267, 268, 269, 270, 271, 272, 273, 274, 275, 276, 277, 278, 279, 280, 281, 282, 283, 284, 285, 286, 287, 288, 289, 290, 291, 292, 293, 294, 295, 296, 297, 298, 299, 300, 301, 302, 303, 304, 305, 306, 307, 308, 309, 310, 311, 312, 313, 314, 315, 316, 317, 318, 319, 320, 321, 322, 323, 324, 325, 326, 327, 328, 329, 330, 331, 332, 333, 334, 335, 336, 337, 338, 339, 340, 341, 342, 343, 344, 345, 346, 347, 348, 349, 350, 351, 352, 353, 354, 355, 356, 357, 358, 359, 360, 361, 362, 363, 364, 365, 366, 367, 368, 369, 370, 371, 372, 373, 374, 375, 376, 377, 378, 379, 380, 381, 382, 383, 384, 385, 386, 387, 388, 389, 390, 391, 392, 393, 394, 395, 396, 397, 398, 399, 400, 401, 402, 403, 404, 405, 406, 407, 408, 409, 410, 411, 412, 413, 414, 415, 416, 417, 418, 419, 420, 421, 422, 423, 424, 425, 426, 427, 428, 429, 430, 431, 432, 433, 434, 435, 436, 437, 438, 439, 440, 441, 442, 443, 444, 445, 446, 447, 448, 449, 450, 451, 452, 453, 454, 455, 456, 457, 458, 459, 460, 461, 462, 463, 464, 465, 466, 467, 468, 469, 470, 471, 472, 473, 474, 475, 476, 477, 478, 479, 480, 481, 482, 483, 484, 485, 486, 487, 488, 489, 490, 491, 492, 493, 494, 495, 496, 497, 498, 499, 500, 501, 502, 503, 504, 505, 506, 507, 508, 509, 510, 511, 512, 513, 514, 515, 516, 517, 518, 519, 520, 521, 522, 523, 524, 525, 526, 527, 528, 529, 530, 531, 532, 533, 534, 535, 536, 537, 538, 539, 540, 541, 542, 543, 544, 545, 546, 547, 548, 549, 550, 551, 552, 553, 554, 555, 556, 557, 558, 559, 560, 561, 562, 563, 564, 565, 566, 567, 568, 569, 570, 571, 572, 573, 574, 575, 576, 577, 578, 579, 580, 581, 582, 583, 584, 585, 586, 587, 588, 589, 590, 591, 592, 593, 594, 595, 596, 597, 598, 599, 600, 601, 602, 603, 604, 605, 606, 607, 608, 609, 610, 611, 612, 613, 614, 615, 616, 617, 618, 619, 620, 621, 622, 623, 624, 625, 626, 627, 628, 629, 630, 631, 632, 633, 634, 635, 636, 637, 638, 639, 640, 641, 642, 643, 644, 645, 646, 647, 648, 649, 650, 651, 652, 653, 654, 655, 656, 657, 658, 659, 660, 661, 662, 663, 664, 665, 666, 667, 668, 669, 670, 671, 672, 673, 674, 675, 676, 677, 678, 679, 680, 681, 682, 683, 684, 685, 686, 687, 688, 689, 690, 691, 692, 693, 694, 695, 696, 697, 698, 699, 700, 701, 702, 703, 704, 705, 706, 707, 708, 709, 710, 711, 712, 713, 714, 715, 716, 717, 718, 719, 720, 721, 722, 723, 724, 725, 726, 727, 728, 729, 730, 731, 732, 733, 734, 735, 736, 737, 738, 739, 740, 741, 742, 743, 744, 745, 746, 747, 748, 749, 750, 751, 752, 753, 754, 755, 756, 757, 758, 759, 760, 761, 762, 763, 764, 765, 766, 767, 768, 769, 770, 771, 772, 773, 774, 775, 776, 777, 778, 779, 780, 781, 782, 783, 784, 785, 786, 787, 788, 789, 790, 791, 792, 793, 794, 795, 796, 797, 798, 799, 800, 801, 802, 803, 804, 805, 806, 807, 808, 809, 810, 811, 812, 813, 814, 815, 816, 817, 818, 819, 820, 821, 822, 823, 824, 825, 826, 827, 828, 829, 830, 831, 832, 833, 834, 835, 836, 837, 838, 839, 840, 841, 84

2.1. A 1" x 1/4" x 1/4" hole is to be drilled in the center of the hole, perpendicular to the surface of the hole, and the hole is to be drilled to a depth of 1/4".

[illegible]

4.1. The Venturium counter panel shall be installed near the processing table, but shall not be attached to the structure.

4.2. When necessary, the Venturium counter shall be extended at the Venturium panel and be a single unit.

4.3. Information recorded in the counter shall be made available to the user and shall be stored in a computer and include the location of future data points. The contractor is responsible for ensuring that the counter is located and installed in a location that is accessible to the user and is not in a location that is inaccessible to the user and is not in a location that is inaccessible to the user.

4.4. All work shall be done in accordance with the contract and shall be done in accordance with the contract and shall be done in accordance with the contract.

§2. Any bore hole fill that results from the installation of the proposed system shall be sealed and monitored or otherwise treated to prevent erosion according to the County erosion control regulations.

Side View

Dark-colored vehicle
Light-colored roof rack
Rear window visible
Vehicle parked on a paved surface

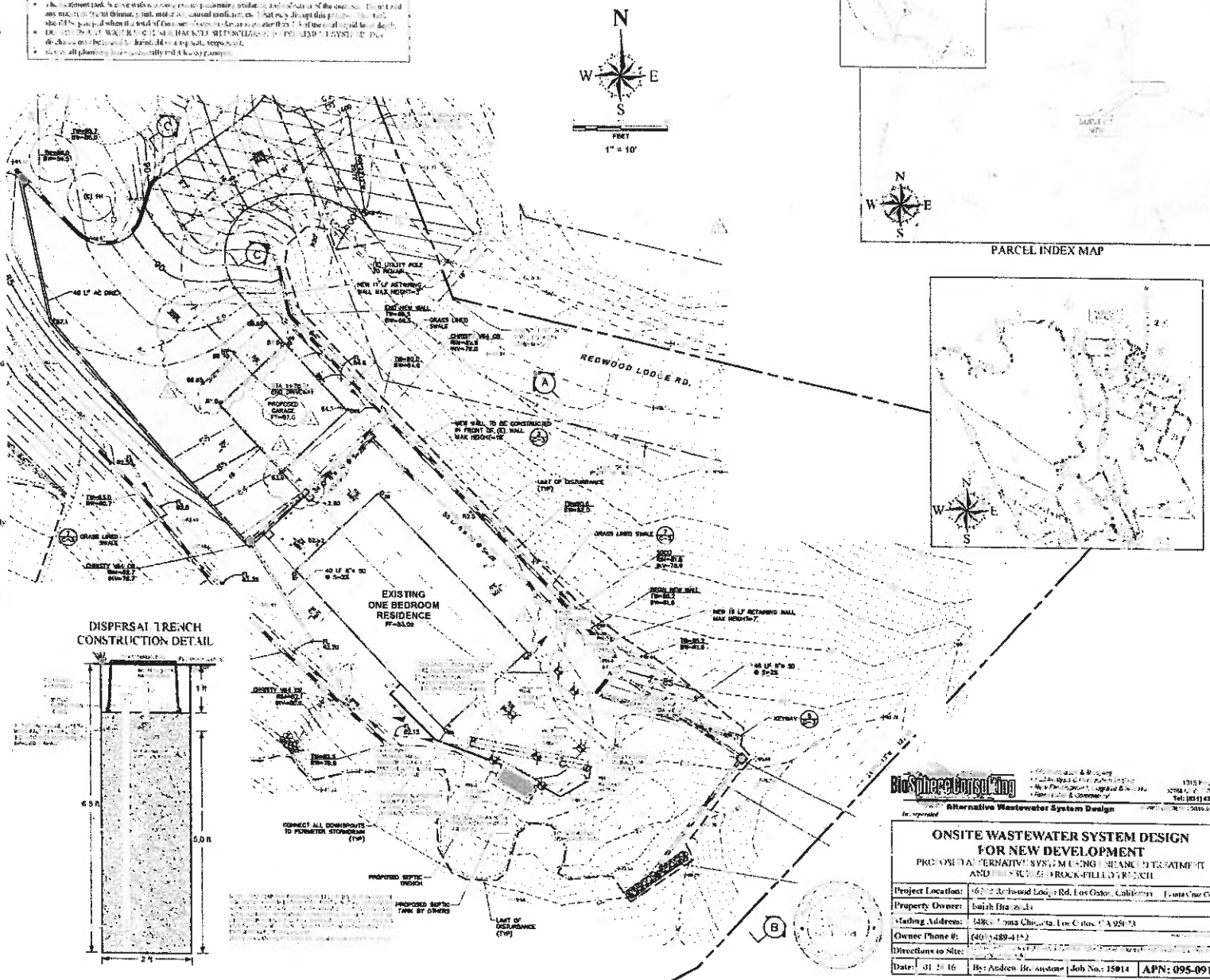
Top View

Vehicle from above
Roof rack visible
Rear window visible
Vehicle parked on a paved surface

Front View

Front of vehicle
Headlights visible
Grille visible
Vehicle parked on a paved surface

1. The court should read and pass on the petition, and give the respondent an opportunity to be heard.
2. The respondent must appear and answer the petition if the court so directs.
3. The court should then proceed to consider the petition and the respondent's answer.
4. The court should then proceed to consider the petition and the respondent's answer.
5. The court should then proceed to consider the petition and the respondent's answer.
6. The court should then proceed to consider the petition and the respondent's answer.
7. The court should then proceed to consider the petition and the respondent's answer.
8. The court should then proceed to consider the petition and the respondent's answer.
9. The court should then proceed to consider the petition and the respondent's answer.
10. The court should then proceed to consider the petition and the respondent's answer.



PROPOSED ALTERNATIVE SYSTEM USING MECHANICAL TREATMENT AND BIOLOGICAL BROCK-FILLING PROCESS			
Project Location:	6702 Richmond Lodge Rd., Fox Chase, California - Santa Clara County		
Property Owners:	Smith Bros. Co.		
Mailing Address:	349C - 7ma Chicago, Fox Chase, CA 95078		
Owner Phone #:	(408) 489-4152		
Directions to Site:			
Date:	01/20/16	By: Andrew Bro. Austin	Job No.: 15014 APN: 095-091-22