

CONSTRUCTION APPROVAL: *John S. Jones* 1/15/09
OPERATIONS APPROVAL: *John S. Jones* 1-12-09
ADA COMPLIANCE: *Carl Row* 1-12-09
TRAFFIC ENGINEERING APPROVAL: *Joe Schmitt* 1/16/09

INDEX OF SHEETS

SHEET NO.	DESCRIPTION
1	TITLE SHEET
2	NOTES
3	SITE PLAN AT 33RD AVENUE
4	SITE PLAN AT 34TH AVENUE
5	SITE PLAN AT 35TH AVENUE
6	SITE PLAN BETWEEN 35TH AND 36TH AVENUES
7	SITE PLAN AT 36TH AVENUE
8	SITE PLAN AT 41ST AVENUE (THE HOOK)
9	BLUFF PROTECTION WALL CROSS SECTIONS STATIONS 2+00 TO 6+50
10	BLUFF PROTECTION WALL CROSS SECTIONS STATIONS 7+00 TO 11+00
11	BLUFF PROTECTION WALL CROSS SECTIONS STATIONS 11+50 AND 26+00 TO 28+00
12	BLUFF PROTECTION WALL TYPICAL SECTIONS
13	BOTTOM AND END OF WALL DETAILS
14	STAIRWAY TYPICAL SECTIONS AND DETAILS
15	STAIRWAY #1 LAYOUT AND PROFILE
16	STAIRWAY #2 LAYOUT AND PROFILE
17	STAIRWAY #3 LAYOUT AND PROFILE
18	EXAMPLE STAIRWAY AESTHETIC DETAILS
19	MSE BUILD-OUT TYPICAL DETAILS
20	MSE BUILD-OUT #1, #2, AND #3 LAYOUTS AND PROFILES
21	MSE BUILD-OUT #4 AND #5 LAYOUTS AND PROFILES
22	PLANTER LEDGE AND TREE ROOT PROTECTION TYPICAL DETAILS
23	PLANTER LEDGE LAYOUTS
24	HIGH RELIEF AREA TYPICAL DETAILS
25	SOIL NAIL WALL TYPICAL DETAILS
26	MISCELLANEOUS DETAILS 1
27	MISCELLANEOUS DETAILS 2
28	FINISH SHOTCRETE TEXTURING AND STAINING DETAILS
29	DEMOLITION PLAN - EAST CLIFF DRIVE BETWEEN 32ND AND 36TH AVENUES
30	DEMOLITION PLAN - EAST CLIFF DRIVE AT 41ST AVENUE (THE HOOK)
31	TRAFFIC CONTROL & STAGING AREA PLAN
32	TRAFFIC CONTROL & STAGING AREA PLAN
33	TRAFFIC CONTROL & STAGING AREA PLAN

GENERAL NOTES

- ALL FIGURE REFERENCES REFER TO STANDARD DRAWINGS IN THE CURRENT EDITION OF THE "COUNTY OF SANTA CRUZ DESIGN CRITERIA".
- NO CHANGES IN THE APPROVED PROJECT PLANS SHALL BE MADE WITHOUT PRIOR APPROVAL OF THE ENGINEER.
- THE EXISTING UNDERGROUND UTILITIES ARE SHOWN BASED ON INFORMATION SUPPLIED BY THE UTILITY COMPANIES. THE CONTRACTOR IS TO FIELD VERIFY ALL UTILITIES TO AVOID ANY POSSIBLE CONFLICTS, AND NOTIFY THE ENGINEER OF ANY CONFLICTS FOUND.
- ALL CONSTRUCTION ACTIVITIES SHALL BE LIMITED TO THE HOURS OF 7:30 AM TO 6:00 PM WEEKDAYS. TEMPORARY LANE AND ROAD CLOSURES MAY NOT BE MADE BEFORE 8:30 AM OR AFTER 4:30 PM.
- EXPOSED SOIL SURFACES SHALL BE WETTED DOWN PERIODICALLY TO MINIMIZE DUST GENERATION DURING THE CONSTRUCTION.
- ALL STATIONING REFERS TO THE CONTROL LINE AS SHOWN ON THESE PLANS.
- EXISTING WATER SERVICE BOXES, FIRE HYDRANTS AND FIRE SERVICES TO BE RELOCATED OR ADJUSTED TO FINISHED GRADE SHALL BE COORDINATED WITH THE SANTA CRUZ WATER DEPARTMENT AND RELOCATED BY THE CONTRACTOR. PLEASE PROVIDE 48 HOURS MINIMUM NOTICE TO THE SANTA CRUZ WATER DEPARTMENT FOR WATER INSPECTIONS. CALL SANTA CRUZ WATER DEPARTMENT AT (831) 420-6210.
- THE CONTRACTOR IS TO CONTACT UNDERGROUND SERVICE ALERT (USA) (800) 227-2600 AT LEAST 48 HOURS PRIOR TO CONSTRUCTION, IN ORDER TO HAVE THE EXISTING UTILITIES MARKED IN THE FIELD.
- TRAFFIC DETOURS AND ROAD CLOSURES SHALL BE IN ACCORDANCE WITH THE TRAFFIC CONTROL & STAGING AREA PLANS.
- CONTRACTOR IS RESPONSIBLE FOR ALL MEANS AND METHODS REQUIRED TO CONSTRUCT THE WORK SHOWN ON THE PLANS AND REFERENCED IN THE SPECIAL PROVISIONS INCLUDING ALL PERMANENT AND TEMPORARY WORKS. THE CONTRACTOR SHALL MONITOR ALL SURROUNDING PROPERTIES AND INSTALL MONITORING POINTS OR DEVICES NECESSARY TO IDENTIFY AND MINIMIZE DAMAGE TO ADJACENT PROPERTY DURING WORK.

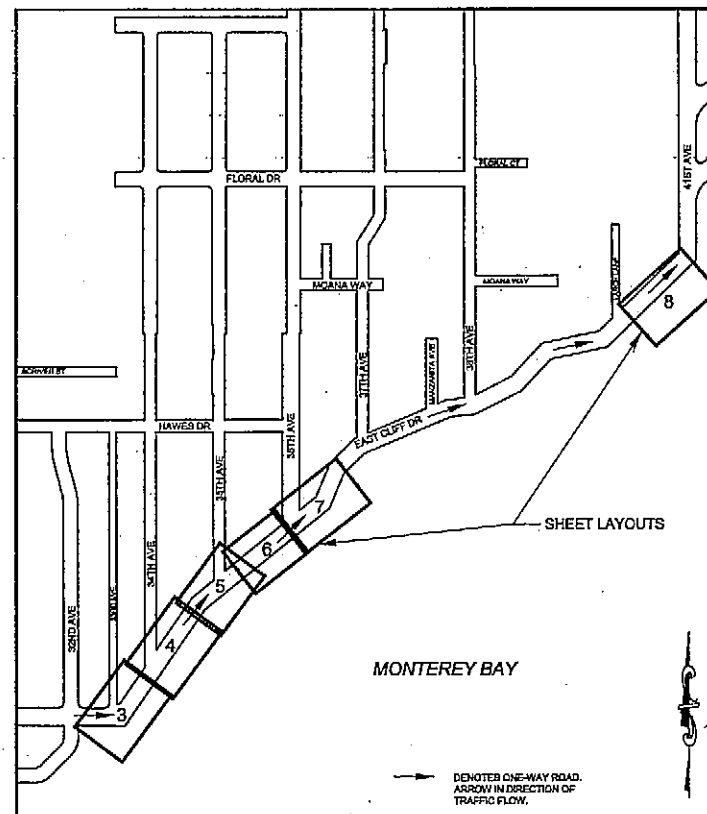
EROSION CONTROL NOTES

- EROSION CONTROL MEASURES WILL CONTROL SITE EROSION, PREVENT SEDIMENT TRANSPORT OFF THE SITE, CONFORM WITH THE SANTA CRUZ COUNTY EROSION CONTROL ORDINANCE AND BE COMPLETE BY OCTOBER 15.
- DISTURBANCE TO NATURAL VEGETATION WILL BE MINIMIZED WITHIN THE AREA OF CONSTRUCTION.
- IF THE CONSTRUCTION PERIOD IS ANTICIPATED TO EXTEND INTO THE WINTER MONTHS THEN PRIOR TO OCTOBER 15 AND UNTIL APRIL 15, THE FOLLOWING MEASURES SHALL BE INCORPORATED.
 - PLACE STRAWBALE BARRIERS AROUND ALL INLETS TO CONTROL THE TRANSPORT OF SEDIMENT.
 - IMPLEMENT SITE EROSION CONTROL MEASURES FOLLOWING COUNTY-APPROVED STORMWATER POLLUTION PREVENTION PLAN.
- ALL DISTURBED AREAS SHALL BE PROTECTED FROM EROSION AS FOLLOWS:
 - REMOVE ALL VEGETATIVE DEBRIS FROM SURFACE.
 - HANDRAKE TO SMOOTH OUT THE SOIL SURFACE.
 - PLACE COUNTY-APPROVED PHOTODEGRADABLE EROSION CONTROL MATTING OVER SOIL SURFACE.
 - BROADCAST COUNTY-APPROVED NATIVE SEED MIX OVER SOIL SURFACE.

COUNTY OF SANTA CRUZ DEPARTMENT OF PUBLIC WORKS

PROJECT PLANS FOR CONSTRUCTION OF A REDEVELOPMENT AGENCY FUNDED PROJECT

EAST CLIFF DRIVE BLUFF PROTECTION 32nd to 36th Avenues and 41st Avenue

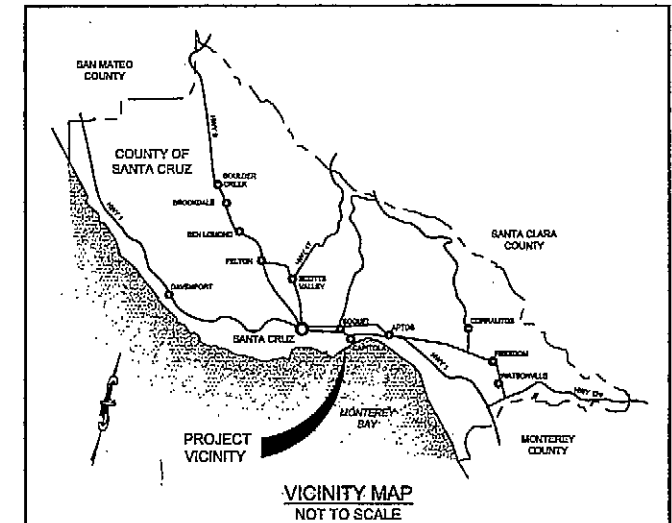


SHEET LAYOUT PLAN

NOT TO SCALE

ABBREVIATIONS

AB	AGGREGATE BASE
AC	ASPHALT CONCRETE
AS	AGGREGATE SUBBASE
BC	BEGIN CURVE
BCR	BEGIN CURB RETURN
BVC	BEGIN VERTICAL CURVE
BW	BOTTOM OF WALL
BW	BACK OF SIDEWALK
CATV	CABLE TELEVISION
CI	CAST-IN-PLACE
C&G	CURB AND GUTTER
C&G & SAW	CURB, GUTTER, AND SIDEWALK CLASS
CL	CENTER LINE
CLR	CLEARANCE
CMP	CORRUGATED METAL PIPE
CNOC	CONCRETE
CPP	CORRUGATED PLASTIC PIPE
DI	DROP INLET
DW	DRIVEWAY
EC	END CURVE
ECR	END CURB RETURN
EG	EXISTING GRADE
EL	ELEVATION
EP	EDGE PAVEMENT
EST	ESTIMATED
EVC	END VERTICAL CURVE
EW	EACH WAY
(E)	EXISTING
FG	FINISH GRADE
FI	FIRE HYDRANT
FIG	FIGURE
FL	FLOWLINE
FS	FINISHED SURFACE
G	GAS
GB	GRADE BREAK
GP	GUY POLE
GR	GRIND
H	HORIZONTAL
HDP	HIGH-DENSITY POLYETHYLENE
HP	HIGH POINT
INV	INVERT
JP	JOINT POLE
L	LENGTH
LD	DEVELOPMENT LENGTH
LOL	LAYOUT LINE
LP	LIGHT POLE
LT	LEFT OF CONTROL LINE
MB	MANHOLE
MHW	MEAN HIGH WATER
MON	MONUMENT BOX
MSE	MECHANICALLY STABILIZED EARTH
OC	ON CENTER
OL	AS OVERLAY
PCC	POINT OF COMPOUND CURVATURE
PL	PROPERTY LINE, PLATE
PP	POWER POLE
PRVC	POINT OF REVERSE VERTICAL CURVATURE
PVC	POLYVINYL CHLORIDE
PVI	POINT OF VERTICAL INTERSECTION
R	RADIUS
RCP	REINFORCED CONCRETE PIPE
RT	RIGHT OF CONTROL LINE
R/W	RIGHT OF WAY
S	SLOPE
SC	SAW CUT
SD	STORM DRAIN
SDDI	STORM DRAIN DROP INLET
SOMH	STORM DRAIN MANHOLE
SS	SANITARY SEWER
SSMH	SANITARY SEWER MANHOLE
STA	STATION
STD	STANDARD
SW	SIDEWALK
T	TELEPHONE
TC	TOP OF CURB
TG	TOP OF GRATE
TOF	TOP OF FOOTING
TOWTW	TOP OF WALL
TP	TELEPHONE POLE
TV	TYPICAL
UG	UNDERGROUND
V	VERTICAL
VC	VERTICAL CURVE
W	WATER
WM	WATER METER
WV	WATER VALVE
4/15	DETAIL 4, SHEET 10



PROJECT BENCHMARK

VERTICAL DATUM:
NAVD83, US SURVEY FEET BASED ON BENCH MARK 61.84 (PID GUZZERS)
ELEV: 84.79. A SURVEY DISK SET IN THE TOP OF A CONCRETE MONUMENT
STAMPED "ELEV 81.54" LOCATED 6.4 KM (3.38 MI) EASTERLY ALONG THE
SOUTHERN PACIFIC RAILROAD FROM THE JUNCTION OF THE RAILROAD
AND WEST CLIFF DRIVE IN SANTA CRUZ, 12.5 M (41.01 FT) WEST OF THE
CENTERLINE OF 41ST AVENUE, 3.0 M (9.84 FT) SOUTH OF THE NEAR RAIL,
9.7 M (21.98 FT) WEST-NORTHWEST OF UTILITY POLE NUMBER 1075 WITH A
TRANSFORMER, 1.8 M (5.81 FT) WEST OF A UTILITY POLE WITH A METER
ATTACHED, 0.5 M (1.64 FT) WEST OF A WITNESS POST, LEVEL WITH THE
TRACK, AND IN A CONCRETE MONUMENT THAT PROJECTS 0.1 M (0.33 FT)
ABOVE THE GROUND SURFACE.

HORIZONTAL DATUM:
STATE PLANE, NAD83, CALIFORNIA 3-0403, US SURVEY FEET

Colt 1/6/09
Design Engineer
Registered Civil Engineer



James E. O'Connell 1/12/09
Redevelopment Engineer
Registered Civil Engineer



John A. Pritchard 1-8-09
Assistant Director of Public Works
Registered Civil Engineer



Thomas E. Pollock 1-20-09
Director of Public Works
Registered Civil Engineer



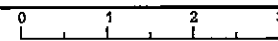
Verney
Chair, Board of Supervisors

January 27, 2009

Plans Approval Date

Bids Open: March 5, 2009

FOR REDUCED PLANS
ORIGINAL SCALE IN INCHES



1.0 GENERAL NOTES

- 1.1 IT IS THE CONTRACTOR'S RESPONSIBILITY TO VERIFY THE LOCATION OF EXISTING UTILITIES, INCLUDING POTHOLES. CONTRACTOR SHALL NOTIFY ENGINEER OF ANY POTENTIAL CONFLICTS BETWEEN EXISTING OR CURRENTLY PROPOSED UTILITIES AND ANY PROPOSED WALL ELEMENTS, TEMPORARY CONSTRUCTION WORKS, OR ANY OTHER ASPECTS OF THE CONTRACTOR'S WORK.
- 1.2 SITE CONDITIONS MAY HAVE CHANGED SINCE DATES OF TOPOGRAPHY (JANUARY 2006) AND PHOTO BASE (AUGUST 2007). CONTRACTOR SHALL NOTIFY ENGINEER OF ANY SIGNIFICANT CHANGES TO SITE CONDITIONS PRIOR TO START OF WORK.
- 1.3 INDICATED LOCATIONS OF EMERGENCY REPAIR WALLS (2004) ARE APPROXIMATE.
- 1.4 CENTERLINE OF EAST CLIFF DRIVE TO BE STAKED BY THE COUNTY AS INDICATED. FINAL LOCATION MAY BE ADJUSTED BY ENGINEER.
- 1.5 ALL ELEVATIONS RELATIVE TO NAVD88 UNLESS OTHERWISE NOTED.
- 1.6 MNW LINE REPRESENTS THE ESTIMATED INTERSECTION OF THE 4.7 FT ELEVATION PLANE WITH EXISTING BEACH FEATURES AT TIME OF SURVEY.
- 1.7 THE CONTRACTOR IS RESPONSIBLE FOR ALL CONSTRUCTION MEANS, METHODS, TECHNIQUES, SEQUENCES, AND PROCEDURES. THE CONTRACTOR SHALL MONITOR ALL ADJACENT PROPERTY BY SURVEYING OR OTHER RECORDABLE METHODS, AND TAKE ACTION TO PREVENT ADJACENT PROPERTY OR UTILITY DAMAGE.

2.0 SOIL NAIL DESIGN NOTES

- 2.1 THE SOIL NAIL WALL STRUCTURES HAVE BEEN DESIGNED IN ACCORDANCE WITH THE SLD (SERVICE LOAD DESIGN) PROCEDURES CONTAINED IN THE FHWA "MANUAL FOR DESIGN AND CONSTRUCTION MONITORING OF SOIL NAIL WALLS", REPORT NO. FHWA-SA-98-069, AND THE CALTRANS "SMALLZ" DESIGN PROGRAM. STRUCTURAL DESIGN OF ANY INDIVIDUAL WALL ELEMENTS NOT COVERED IN THE FHWA MANUAL HAVE BEEN DESIGNED IN ACCORDANCE WITH THE REQUIREMENTS OF THE 1996 AASHTO STANDARD SPECIFICATIONS FOR HIGHWAY BRIDGES AND LATEST INTERIM SPECIFICATIONS.

2.2 REFERENCE MATERIALS:

- A. GEOTECHNICAL INVESTIGATION FOR COASTAL BLUFF PROTECTION, EAST CLIFF DRIVE (PROJECT NO. 6C5404) BY HARO, KASUNICH & ASSOCIATES, INC., DATED JUNE 1997.
- B. ADDENDUM TO GEOTECHNICAL INVESTIGATION BY HARO, KASUNICH & ASSOCIATES, INC., DATED MAY 1998.
- C. TOPOGRAPHIC BASE MAP BY ANDREGG GEOMATICS, INC., DATED MAY 2008.
- D. GEOTECHNICAL INVESTIGATION REPORT, EAST CLIFF DRIVE BLUFF PROTECTION & PARKWAY PROJECT, EAST CLIFF DRIVE BETWEEN 32ND & 41ST AVENUE, SANTA CRUZ COUNTY, CA, PREPARED BY SAGE, PROJECT NO. SE99-033 SCF/W8 TASK 2, DATED OCTOBER 13, 2008.

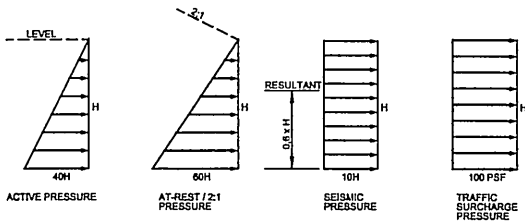
2.3 DESIGN SOIL / ROCK PARAMETERS:

SOIL/ROCK TYPE	FRICTION ANGLE (DEGREES)	COHESION (PSF)	UNIT WEIGHT (PCF)	ULTIMATE BOND STRESS* (PSI)
UPPER TERRACE DEPOSITS	24	400	125	10
LOWER TERRACE DEPOSITS	41	0	125	15
UPPER PURISIMA FORMATION	41	1000	115	40
LOWER PURISIMA FORMATION	43	100	115	25

* ULTIMATE BOND TO BE VERIFIED BY VERIFICATION AND PROOF TESTING DURING CONSTRUCTION.

- 2.4 SEISMIC COEFFICIENT = 0.20g.

3.0 DESIGN SOIL PRESSURES



4.0 SOIL NAIL CONSTRUCTION NOTES

- 4.1 LAYOUT OF SOIL NAILS TO BE PERFORMED BY THE CONTRACTOR BASED ON THE TYPICAL SECTIONS AND SOIL NAIL SCHEDULE. ADJUSTMENTS MAY BE MADE TO ACCOMMODATE FIELD CONDITIONS AS APPROVED BY SAGE OR THE ENGINEER.

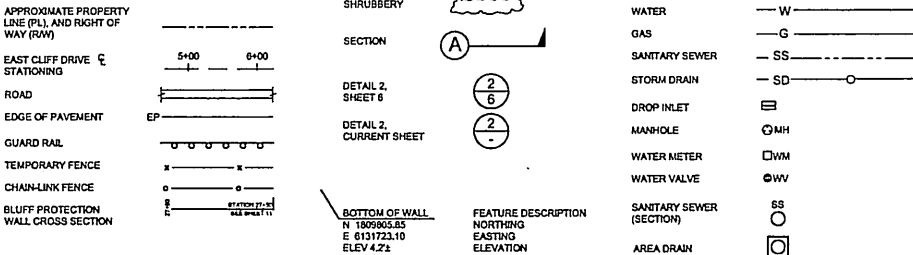
5.0 PRIMARY & SECONDARY SHOTCRETE NOTES

- 5.1 REINFORCED CONCRETE AND SHOTCRETE:
f_y (REBAR) = 60 KSI
f_y (WWS) = 65 KSI
f_c = TYPE II CEMENT, 5,000 PSI (28-DAY SHOTCRETE COMPRESSIVE STRENGTH)
- 5.2 WATER-TO-CEMENT (W/C) RATIO SHALL NOT EXCEED 0.4 BY WEIGHT.
- 5.3 SEE SPECIAL PROVISIONS FOR COMPLETE REQUIREMENTS.

6.0 STRUCTURAL OBSERVATION AND SPECIAL INSPECTIONS

- 6.1 SAGE OR QUALIFIED, LICENSED INSPECTOR SHALL OBSERVE ALL EXCAVATIONS BEFORE CONCRETE OR SHOTCRETE IS PLACED.
- 6.2 SAGE OR QUALIFIED, LICENSED INSPECTOR SHALL OBSERVE ALL TESTING OF PROOF AND VERIFICATION NAILS.
- 6.3 SAGE OR QUALIFIED, LICENSED INSPECTOR SHALL INSPECT ALL REINFORCEMENT PRIOR TO PLACEMENT OF SHOTCRETE OR CONCRETE.
- 6.4 THE CONTRACTOR IS RESPONSIBLE FOR TESTING OF SHOTCRETE IN ACCORDANCE WITH THE PROCEDURES PROVIDED IN THE SPECIAL PROVISIONS.
- 6.5 THE CONTRACTOR SHALL NOTIFY THE ENGINEER 24 HOURS PRIOR TO REQUIRED INSPECTIONS.

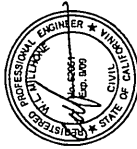
CONVENTIONAL SYMBOLS



APPROXIMATE NUMBER OF PRODUCTION SOIL NAILS PER SOIL/ROCK TYPE	
SOIL/ROCK TYPE AT NAIL HEAD	ESTIMATED QUANTITY
TERRACE DEPOSITS	650
PURISIMA FORMATION	550
TOTAL	1200

APPROXIMATE SHOTCRETE FACING CONTACT AREAS	
WALL DESIGNATION	ESTIMATED AREA
33RD TO 36TH AVENUES	38,600 FT ²
41ST AVENUE (THE HOOK)	13,200 FT ²
TOTAL	51,800 FT ²

4180 Douglas Bl. Ste. 100
Gilroy, CA 95020
P (408) 725-8050
F (408) 725-7708
www.sandiego.com



Santa Cruz County
Department of Public Works
701 Ocean St. Rm 410
Santa Cruz, CA 95060-4000
Phone: (831) 454-2160
Fax: (831) 454-2895

NOTES

East Cliff Drive Bluff Protection
32nd to 36th Avenues and 41st Avenue

California

County of Santa Cruz

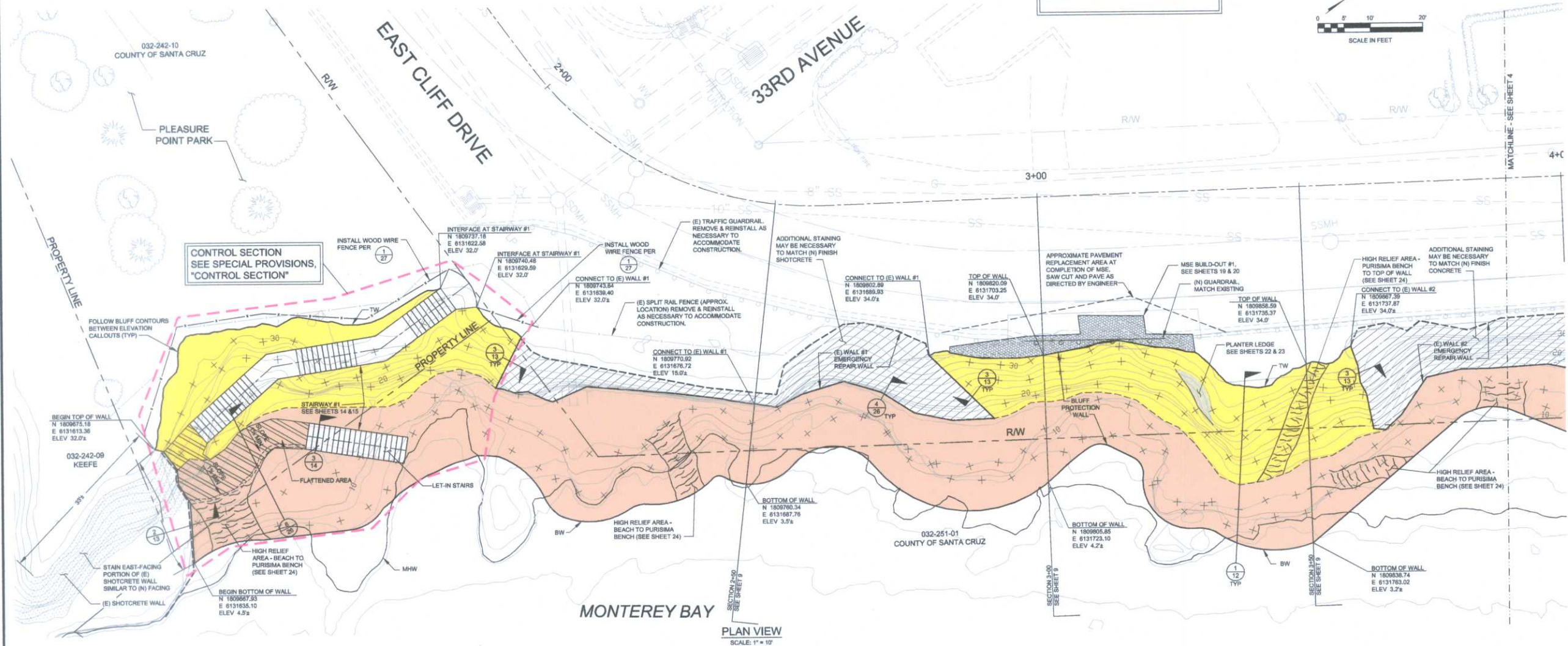
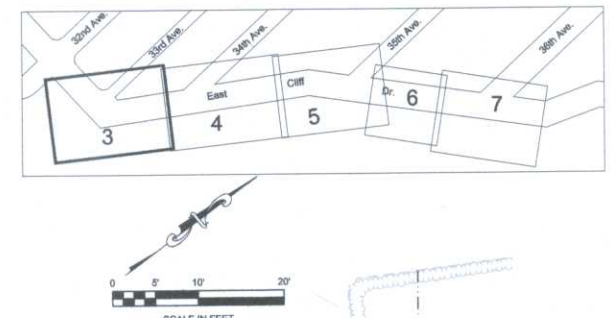
REV	BY	DATE	DESCRIPTION
1	WLM	01/27/09	ISSUED FOR PERMIT

DATE: 01/27/09
SCALE: AS SHOWN
DESIGNED BY: WLM
DRAFTED BY: GJB/DGD
CHECKED BY: SHS/DGK
JOB NO: SE99-033 SCF/W8 Task 5
FILE: BLUFF-1-POST100-A

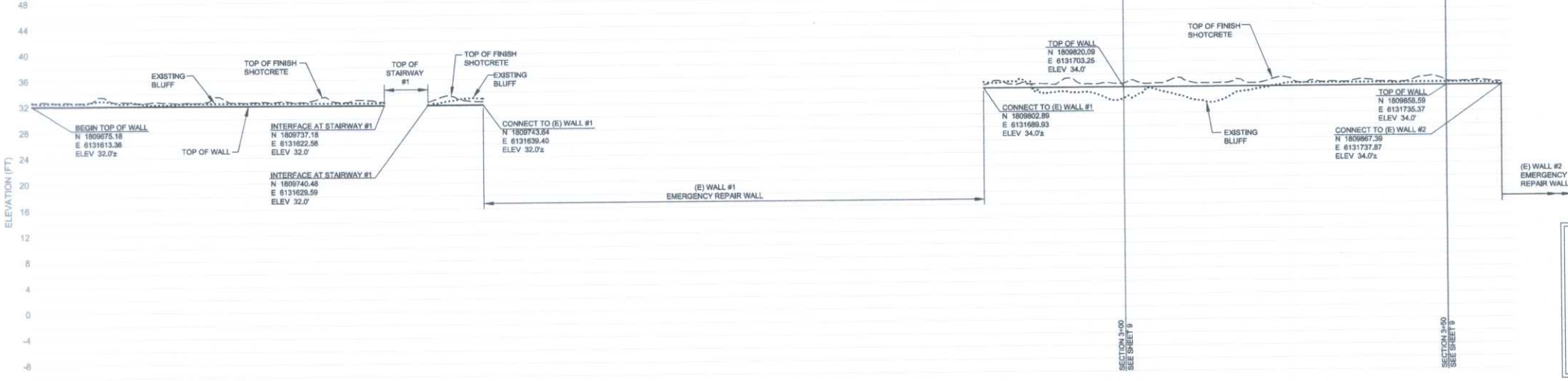
THE LOCATIONS AND ELEVATIONS OF UTILITIES SHOWN ON THIS PLAN ARE APPROXIMATE. WHERE UTILITY CONFLICTS MAY EXIST, THE CONTRACTOR SHALL POTENTIALLY VERIFY UTILITY LOCATIONS PRIOR TO EXCAVATION & DRILLING

- LAYOUT NOTES:
- BLUFF PROTECTION WALL SHALL CONFORM TO BLUFF CONTOURS TO THE MAXIMUM EXTENT PRACTICABLE.
 - WALL LAYOUT SHOWN IS APPROXIMATE AND IS INTENDED TO SHOW GENERAL EXTENTS OF TOP, BOTTOM, AND ENDS OF WALL. ACTUAL EXTENTS OF WALL WILL BE REFINED AFTER STRUCTURAL DEMOLITION, CLEARING AND GRUBBING, AND REMOVAL OF RIP RAP AND CONCRETE RUBBLE.
 - STAIRWAYS ARE SHOWN SCHEMATICALLY. SEE SHEETS 14 - 17 FOR LAYOUTS AND DETAILS.
 - INCLINATION OF HIGH RELIEF AREAS SHALL NOT EXCEED 2H:1V.

- BLUFF PROTECTION WALL KEY:
- FINISH SHOTCRETE TEXTURING / STAINING (TERRACE DEPOSITS) - SEE SHEET 28
 - FINISH SHOTCRETE TEXTURING / STAINING (PURISMA FORMATION) - SEE SHEET 28
 - PLANTER LEDGE BACKFILL - SEE SHEET 22-23
 - MSE BUILD-OUT APPROXIMATE REINFORCEMENT EXTENTS - SEE SHEETS 19-21
 - APPROXIMATE SOIL NAIL LOCATIONS - SEE SHEET 25
 - HIGH RELIEF AREAS - SEE SHEET 24
 - EXISTING EMERGENCY REPAIR WALL



PLAN VIEW
SCALE: 1" = 10'



PROFILE VIEW
NOT TO SCALE

- PROFILE NOTES:
- THE PROFILE VIEW IS PRESENTED TO SHOW APPROXIMATE TOP OF WALL ELEVATIONS ONLY. THE HORIZONTAL DIMENSIONS OF THE TOP OF WALL LINES SHOWN ARE PROJECTED PERPENDICULAR TO THE PLANE OF VIEW, AND MAY VARY SIGNIFICANTLY FROM ACTUAL LENGTHS ALONG TOP OF WALL. DO NOT SCALE.
 - "EXISTING BLUFF" PROFILE CORRESPONDS TO EXISTING GRADE TWO (2) FEET BEHIND THE TOP OF WALL. MEASURED PERPENDICULAR TO THE PLANE OF VIEW. EXISTING BLUFF PROFILE DOES NOT NECESSARILY CORRELATE TO ROADWAY ELEVATIONS OR LOCATIONS OF PROPOSED PARKWAY IMPROVEMENTS.

4180 Douglas Bl. Ste. 100
Grants Bay, CA 95746
P (916) 728-8000
F (916) 728-7706
www.sandiego.com



Santa Cruz County
Department of Public Works
701 Ocean St. Rm. #10
Santa Cruz, CA 95060-4000
Phone: (831) 454-2180
Fax: (831) 454-2385

County Of Santa Cruz

SITE PLAN AT 33RD AVENUE
East Cliff Drive Bluff Protection
32nd to 36th Avenues and 41st Avenue

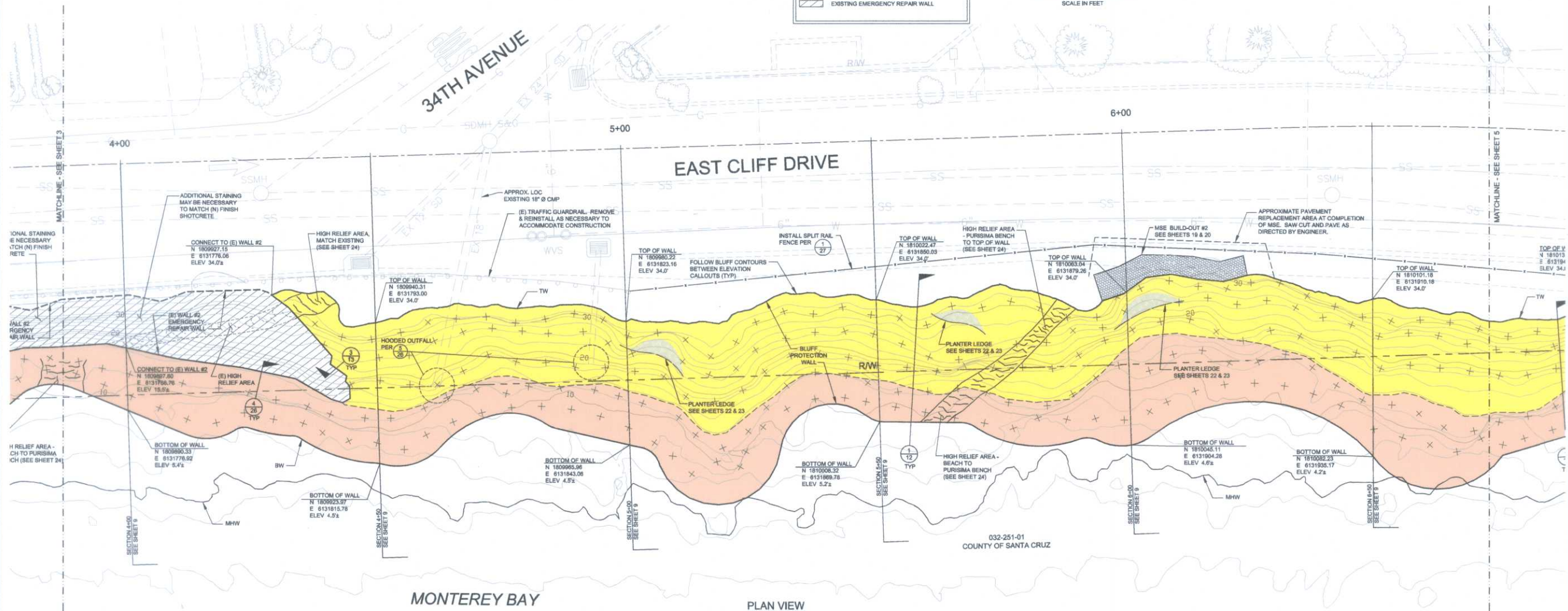
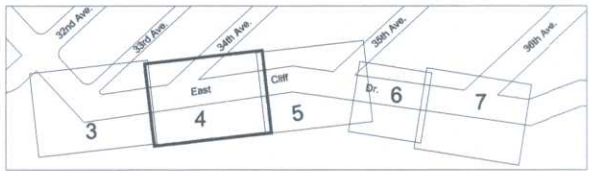
REV	BY	DATE	DESCRIPTION
1	WLM	01/27/09	DATE: 01/27/09
2	WLM	01/27/09	SCALE: 1" = 10'
3	WLM	01/27/09	DESIGNED BY: WLM
4	WLM	01/27/09	DRAFTED BY: GJB/DGD
5	WLM	01/27/09	CHECKED BY: SHS/DGK
6	WLM	01/27/09	JOB NO.: SE98-033 SCPW8 Task 5
7	WLM	01/27/09	FILE: BLUFF 3-POST100-A

THE LOCATIONS AND ELEVATIONS OF UTILITIES SHOWN ON THIS PLAN ARE APPROXIMATE. WHERE UTILITY CONFLICTS MAY EXIST, THE CONTRACTOR SHALL POT-HOLE TO VERIFY UTILITY LOCATIONS PRIOR TO EXCAVATION & DRILLING.

- LAYOUT NOTES:
- BLUFF PROTECTION WALL SHALL CONFORM TO BLUFF CONTOURS TO THE MAXIMUM EXTENT PRACTICABLE.
 - WALL LAYOUT SHOWN IS APPROXIMATE AND IS INTENDED TO SHOW GENERAL EXTENTS OF TOP, BOTTOM, AND ENDS OF WALL. ACTUAL EXTENTS OF WALL WILL BE REFINED AFTER STRUCTURAL DEMOLITION, CLEARING AND GRUBBING, AND REMOVAL OF RIP RAP AND CONCRETE RUBBLE.
 - STAIRWAYS ARE SHOWN SCHEMATICALLY. SEE SHEETS 14 - 17 FOR LAYOUTS AND DETAILS.
 - INCLINATION OF HIGH RELIEF AREAS SHALL NOT EXCEED 2H:1V.

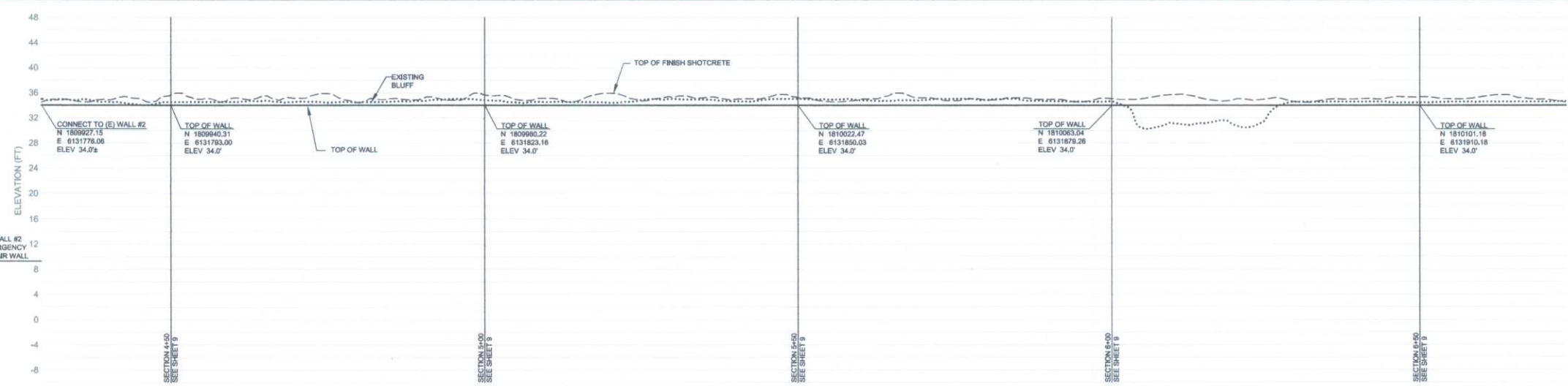
BLUFF PROTECTION WALL KEY

- FINISH SHOTCRETE TEXTURING / STAINING (TERRACE DEPOSITS) - SEE SHEET 28
- FINISH SHOTCRETE TEXTURING / STAINING (PURISIMA FORMATION) - SEE SHEET 28
- PLANTER LEDGE BACKFILL - SEE SHEET 22-23
- MSE BUILD-OUT APPROXIMATE REINFORCEMENT EXTENTS - SEE SHEETS 19-21
- APPROXIMATE SOIL NAIL LOCATIONS - SEE SHEET 25
- HIGH RELIEF AREAS - SEE SHEET 24
- EXISTING EMERGENCY REPAIR WALL



PLAN VIEW
SCALE: 1" = 10'

- PROFILE NOTES:
- THE PROFILE VIEW IS PRESENTED TO SHOW APPROXIMATE TOP OF WALL ELEVATIONS ONLY. THE HORIZONTAL DIMENSIONS OF THE TOP OF WALL LINES SHOWN ARE PROJECTED PERPENDICULAR TO THE PLANE OF VIEW, AND MAY VARY SIGNIFICANTLY FROM ACTUAL LENGTHS ALONG TOP OF WALL. DO NOT SCALE.
 - "EXISTING BLUFF" PROFILE CORRESPONDS TO EXISTING GRADE TWO (2) FEET BEHIND THE TOP OF WALL, MEASURED PERPENDICULAR TO THE PLANE OF VIEW. EXISTING BLUFF PROFILE DOES NOT NECESSARILY CORRELATE TO ROADWAY ELEVATIONS OR LOCATIONS OF PROPOSED PARKWAY IMPROVEMENTS.



PROFILE VIEW
NOT TO SCALE

4180 Douglas Bl. Ste. 100
San Jose, CA 95128
P (408) 723-8050
F (408) 723-7706
www.sandiego.com

sage
SANDERS & ASSOCIATES ARCHITECTURAL ENGINEERING
INTEGRATING EARTH & STRUCTURE

PROFESSIONAL ENGINEER
CIVIL
STATE OF CALIFORNIA
No. 10000
Exp. 12/31/2010

San Jose County
Department of Public Works
701 Ocean St., Rm. 410
San Jose, CA 95064-4000
Phone: (408) 454-2160
Fax: (408) 454-2385

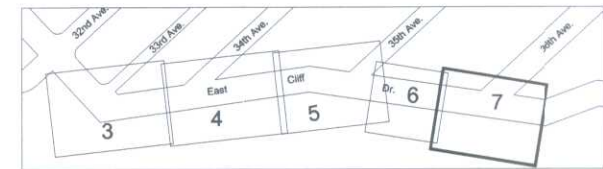
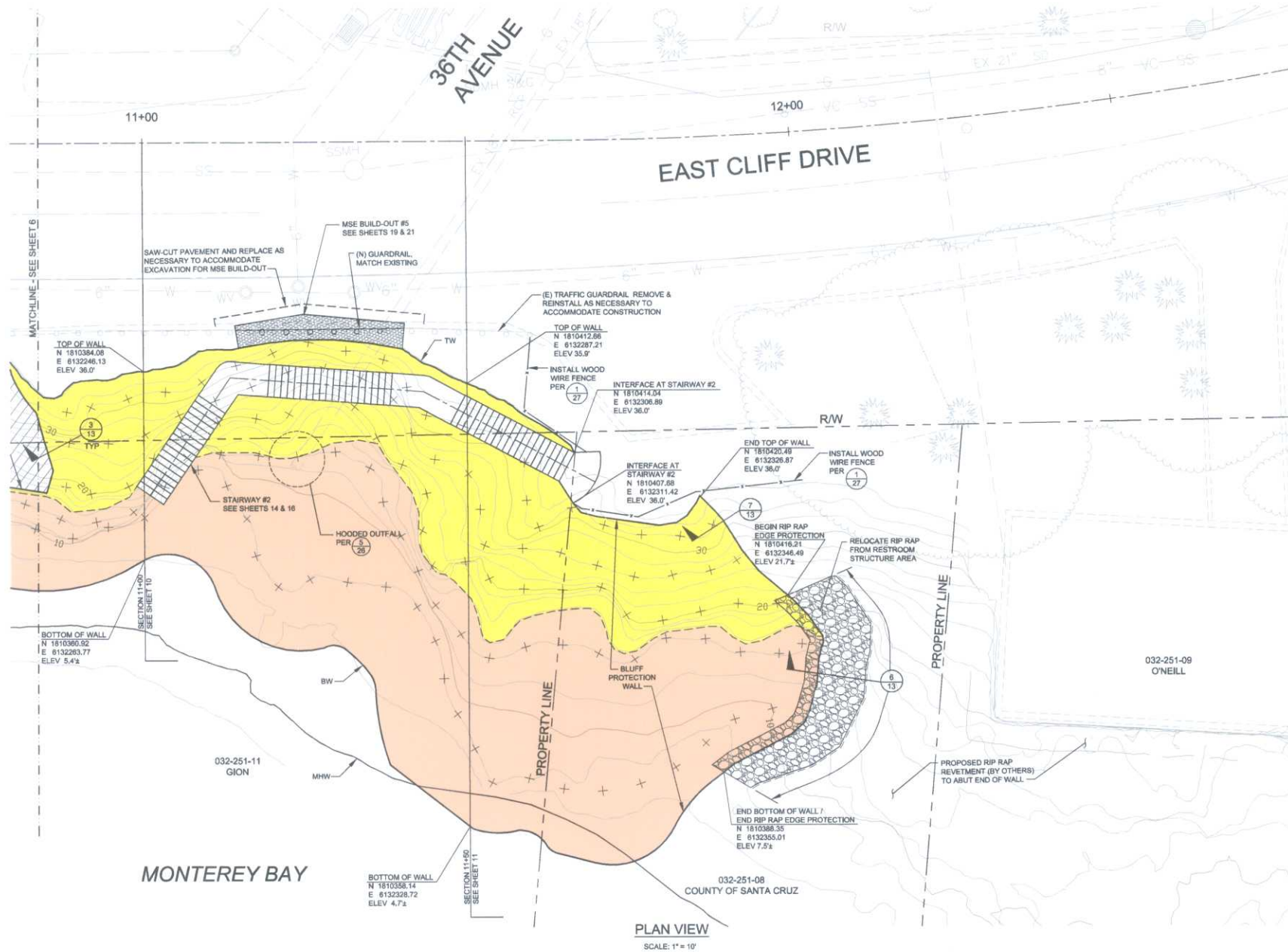
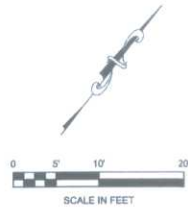
California

SITE PLAN AT 34TH AVENUE
East Cliff Drive Bluff Protection
32nd to 36th Avenues and 41st Avenue

County of Santa Cruz

REV	BY	DATE	DESCRIPTION
1	WJM	01/27/09	DATE: 01/27/09 SCALE: 1" = 10' DESIGNED BY: WJM DRAFTED BY: GJB/DGD CHECKED BY: SHS/DGK JOB NO.: SE99-033 SCPWB Task 5 FILE: BLUFF 3-POST100-A

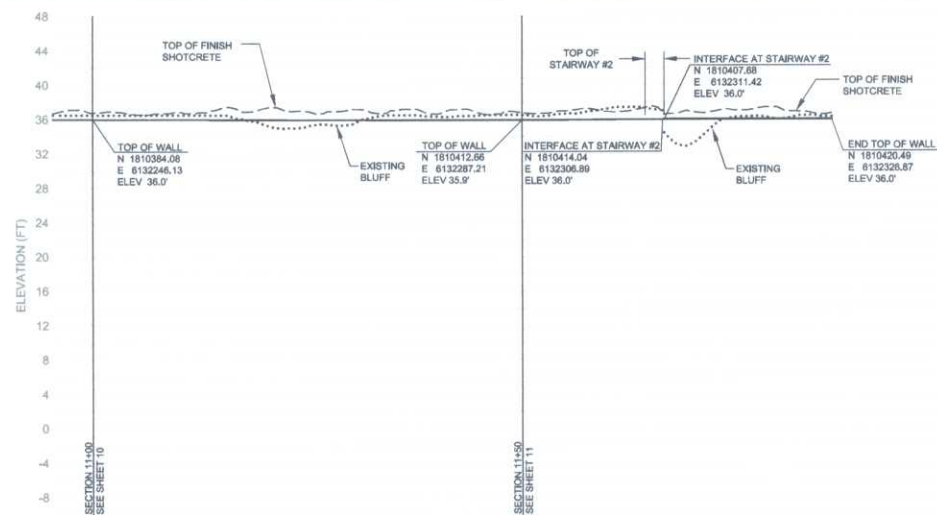
4
SHEET 4 OF 33



- BLUFF PROTECTION WALL KEY**
- FINISH SHOTCRETE TEXTURING / STAINING (TERRACE DEPOSITS) - SEE SHEET 28
 - FINISH SHOTCRETE TEXTURING / STAINING (PURBSMA FORMATION) - SEE SHEET 28
 - PLANTER LEDGE BACKFILL - SEE SHEET 22-23
 - MSE BUILD-OUT APPROXIMATE REINFORCEMENT EXTENTS - SEE SHEETS 19-21
 - APPROXIMATE SOIL NAIL LOCATIONS - SEE SHEET 25
 - HIGH RELIEF AREAS - SEE SHEET 24
 - EXISTING EMERGENCY REPAIR WALL

- LAYOUT NOTES:**
- BLUFF PROTECTION WALL SHALL CONFORM TO BLUFF CONTOURS TO THE MAXIMUM EXTENT PRACTICABLE.
 - WALL LAYOUT SHOWN IS APPROXIMATE AND IS INTENDED TO SHOW GENERAL EXTENTS OF TOP, BOTTOM, AND ENDS OF WALL. ACTUAL EXTENTS OF WALL WILL BE REFINED AFTER STRUCTURAL DEMOLITION, CLEARING AND GRUBBING, AND REMOVAL OF RIP RAP AND CONCRETE RUBBLE.
 - STAIRWAYS ARE SHOWN SCHEMATICALLY. SEE SHEETS 14 - 17 FOR LAYOUTS AND DETAILS.
 - INCLINATION OF HIGH RELIEF AREAS SHALL NOT EXCEED 2H:1V.

THE LOCATIONS AND ELEVATIONS OF UTILITIES SHOWN ON THIS PLAN ARE APPROXIMATE. WHERE UTILITY CONFLICTS MAY EXIST, THE CONTRACTOR SHALL POT-HOLE TO VERIFY UTILITY LOCATIONS PRIOR TO EXCAVATION & DRILLING.



- PROFILE NOTES:**
- THE PROFILE VIEW IS PRESENTED TO SHOW APPROXIMATE TOP OF WALL ELEVATIONS ONLY. THE HORIZONTAL DIMENSIONS OF THE TOP OF WALL LINES SHOWN ARE PROJECTED PERPENDICULAR TO THE PLANE OF VIEW, AND MAY VARY SIGNIFICANTLY FROM ACTUAL LENGTHS ALONG TOP OF WALL. DO NOT SCALE.
 - "EXISTING BLUFF" PROFILE CORRESPONDS TO EXISTING GRADE TWO (2) FEET BEHIND THE TOP OF WALL, MEASURED PERPENDICULAR TO THE PLANE OF VIEW. EXISTING BLUFF PROFILE DOES NOT NECESSARILY CORRELATE TO ROADWAY ELEVATIONS OR LOCATIONS OF PROPOSED PARKWAY IMPROVEMENTS.

4180 Douglas Bl., Ste. 100
Granite Bay, CA 95746
P (916) 725-3050
F (916) 725-7706
www.sandiegoec.com



Santa Cruz County
Department of Public Works
701 Ocean St., Rm. 410
Santa Cruz, CA 95060-4000
Phone: (831) 454-4060
Fax: (831) 454-2365

SITE PLAN AT 36TH AVENUE
East Cliff Drive Bluff Protection
32nd to 36th Avenues and 41st Avenue

County of Santa Cruz California

REV	BY	DATE	DESCRIPTION

DATE: 01/27/09
SCALE: 1" = 10'
DESIGNED BY: WLM
DRAFTED BY: GJB/DGG
CHECKED BY: SHS/DGK
JOB NO.: SE99-033 SCPW8 Task 5
FILE: BLUFF 3-POST100-A

