

Twin Lakes Projects

Santa Cruz County Redevelopment Agency

*Review of two projects: status of design
phases, anticipated next steps & schedule*

October 28, 2010



Build a Stronger Soquel and Live Oak

Santa Cruz Harbor



Aerial View

5th Ave. to 7th Ave



Aerial View

7th Ave. to 9th Ave.



Aerial View

9th Ave. to 12th Ave.



Aerial View



STATISTICS (Approximate):
 Existing Pedestrian Pathways & Sidewalks: 6890 LF
 New and Improved Pedestrian Pathways & Sidewalks: 10,855 LF
 Existing Bike lanes: 20,775 LF
 New & Improved Bike lanes: 7825 LF

LIVE OAK COASTAL ACCESS PROJECTS

Twin Lakes Projects



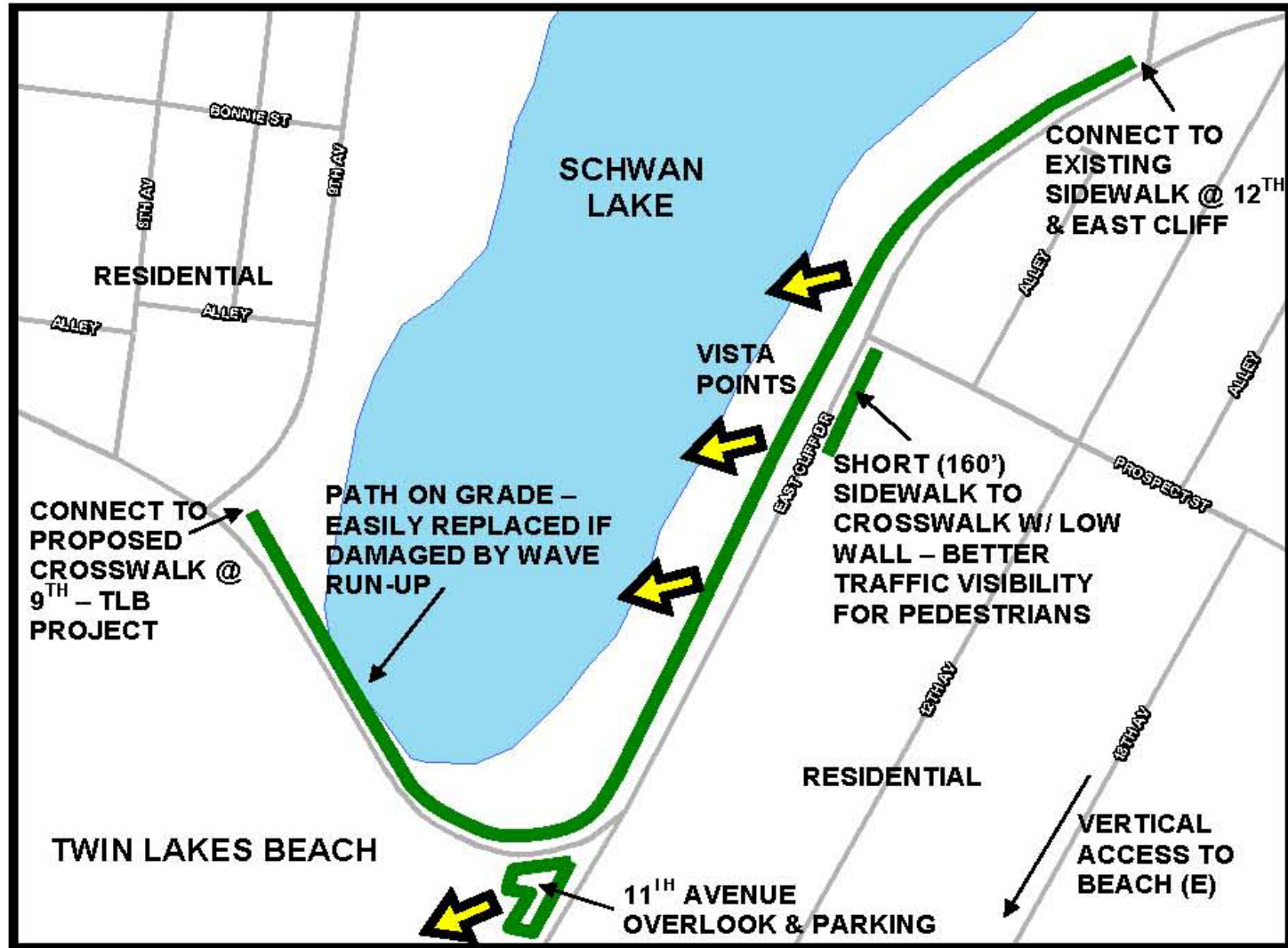
Twin Lakes Beachfront – Schwan Lake

Schwan Lake Project



View from Proposed Lakeside Walkway

Schwan Lake Project Features



Graphic View

Existing Sidewalk Stops West of 12th Ave



Existing conditions

Pedestrians from North currently use Bicycle lane for Walking



Existing conditions

Heritage Pine North of Prospect



Existing conditions

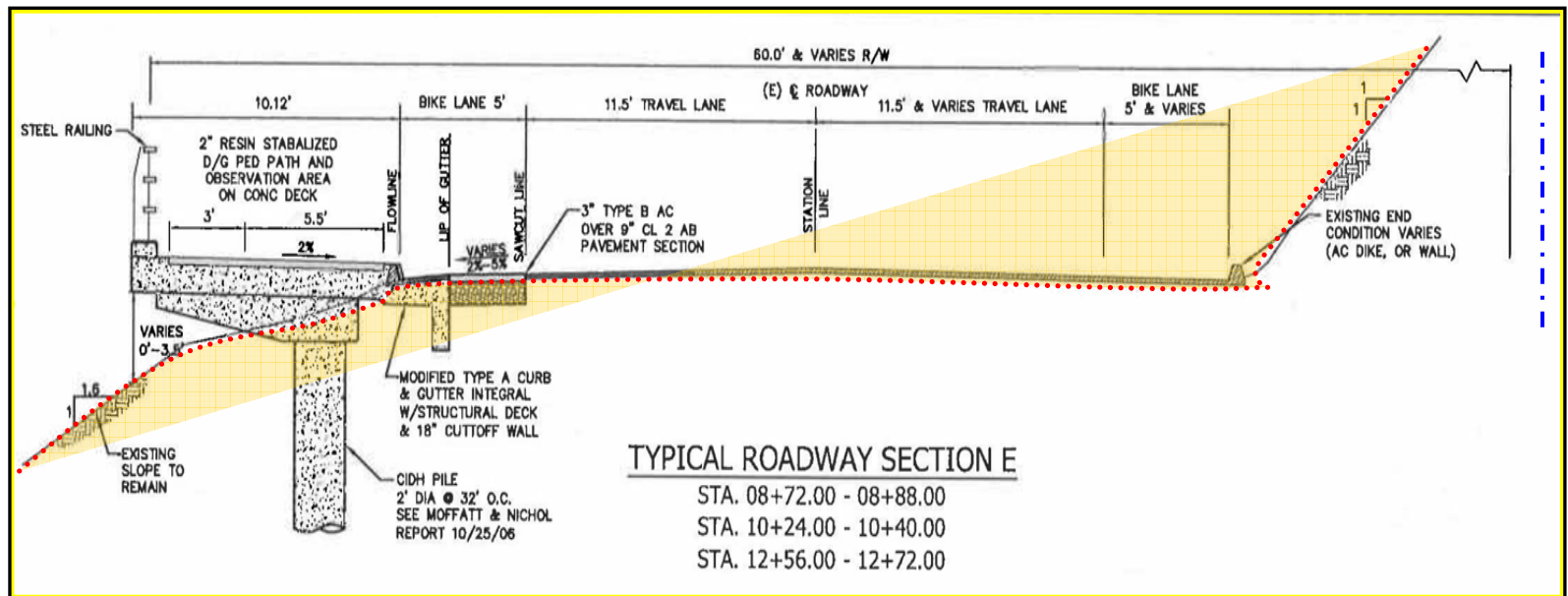
Uphill Roadside below Prospect



Existing conditions

Project Alternatives

- *Path along Schwan Lake Side*
- *9th to 11th Ave across beachfront*
- *11th to Prospect and 13th Ave (uphill side)*
- *No project Improvements*



Schwan Lake Pedestrian Improvements



East Cliff Drive – 9th Ave. to 12th Ave

Lakeside Overlook

Pedestrian Benefits

- *Offers vista points of ocean and Schwan lake*
- *Affords access to the beach & connects neighborhoods*
- *Direct connection to experience state park environment*
- *Provides pedestrian and bicycle safety improvements*
- *Reduces traffic impacts for pedestrians*



Lakeside Pathway Plan
View From Eastside of Lake, Looking
Southwest

Visual simulation

Proposed Lakeside Pathway



Visual simulation

Lakeside Walkway



Lakeside Pathway Plan
View From Eastside of Lake, Looking
Northeast

Visual simulation

View across lake after 5 Years



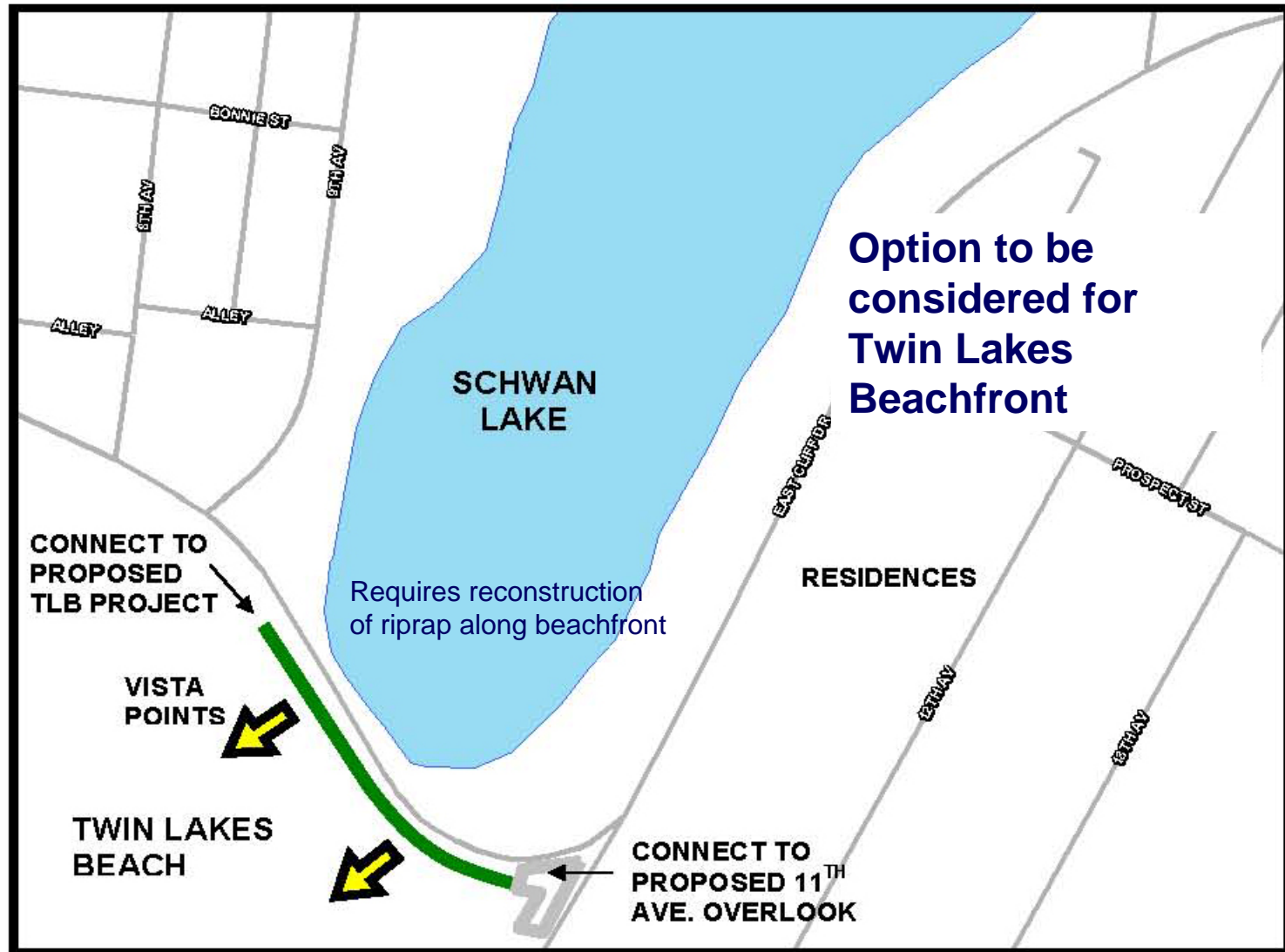
Visual simulation

Twin Lakes Projects



Twin Lakes Beachfront – Schwan Lake

Beachfront to 11th Ave

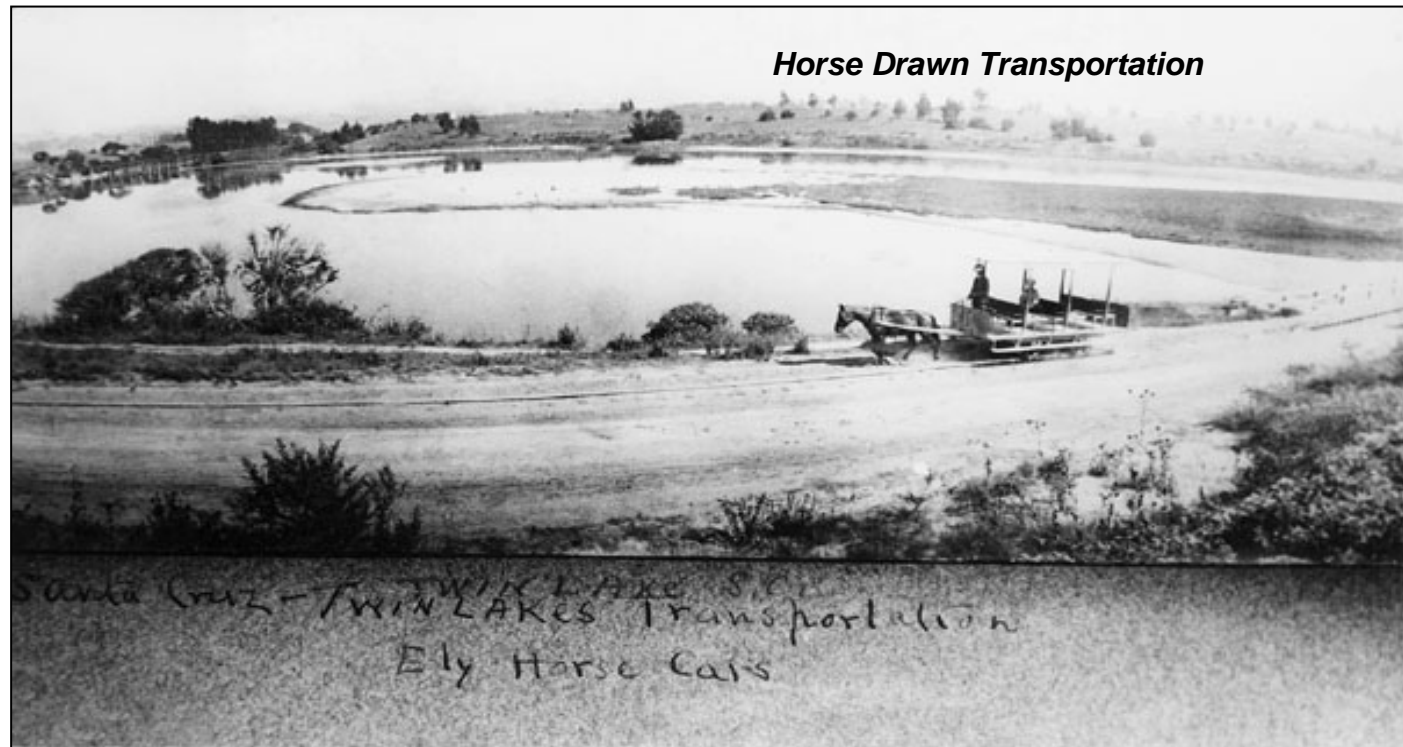


Option to be considered for Twin Lakes Beachfront

Graphic View

Twin Lakes Beachfront Features

RRM Design Team



Historic View

Twin Lakes Beachfront Site Plan



5th Ave. to Assembly Ave.



View Looking West Down E. Cliff Dr. – Summer Sand Condition



View Looking West Down E. Cliff Dr. – Summer Sand Condition



View Looking West Down E. Cliff Dr. – Summer Sand Condition



View Looking West Down E. Cliff Dr. – Summer Sand Condition



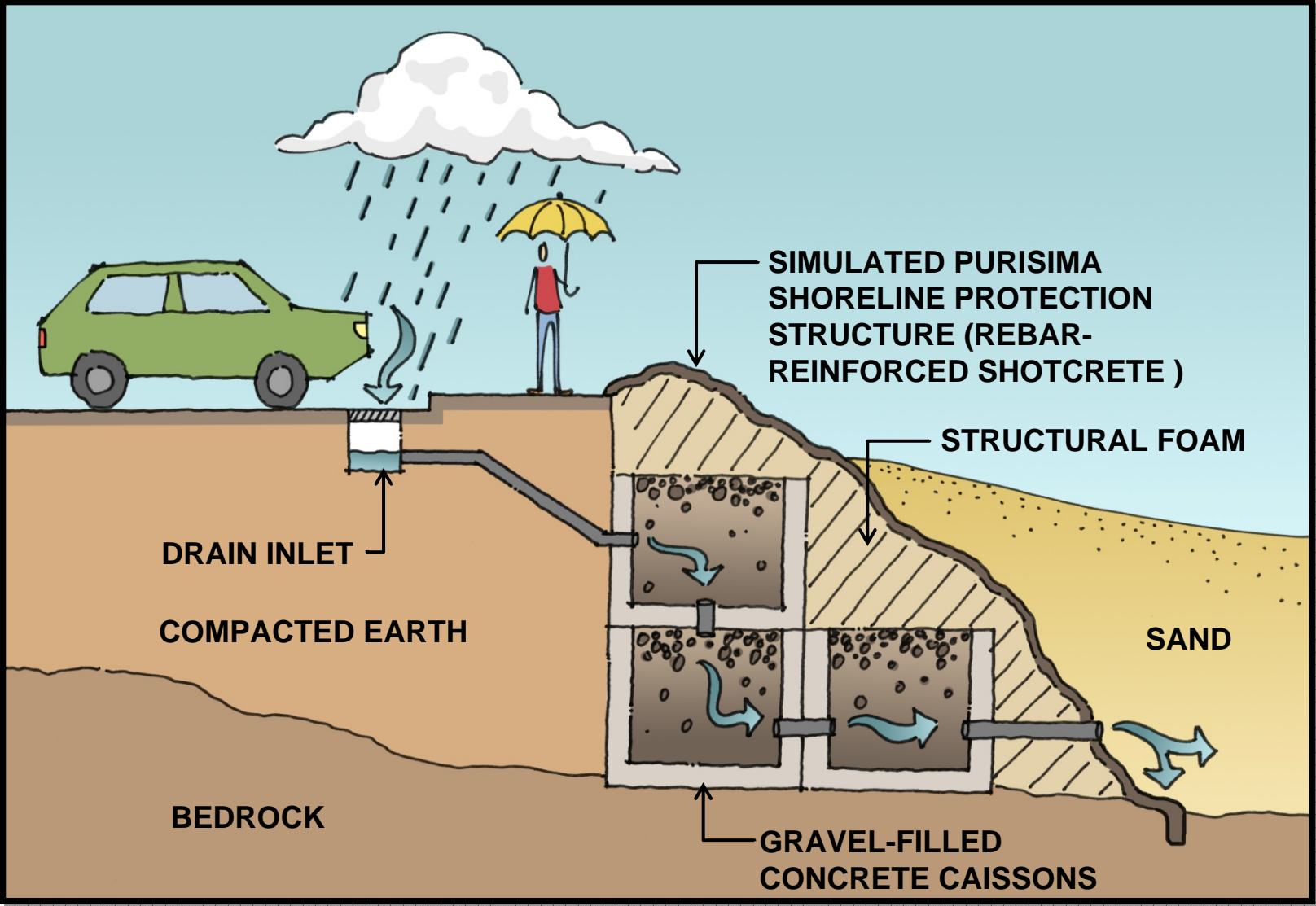
View Looking West Down E. Cliff Dr. – Low Summer Sand Condition



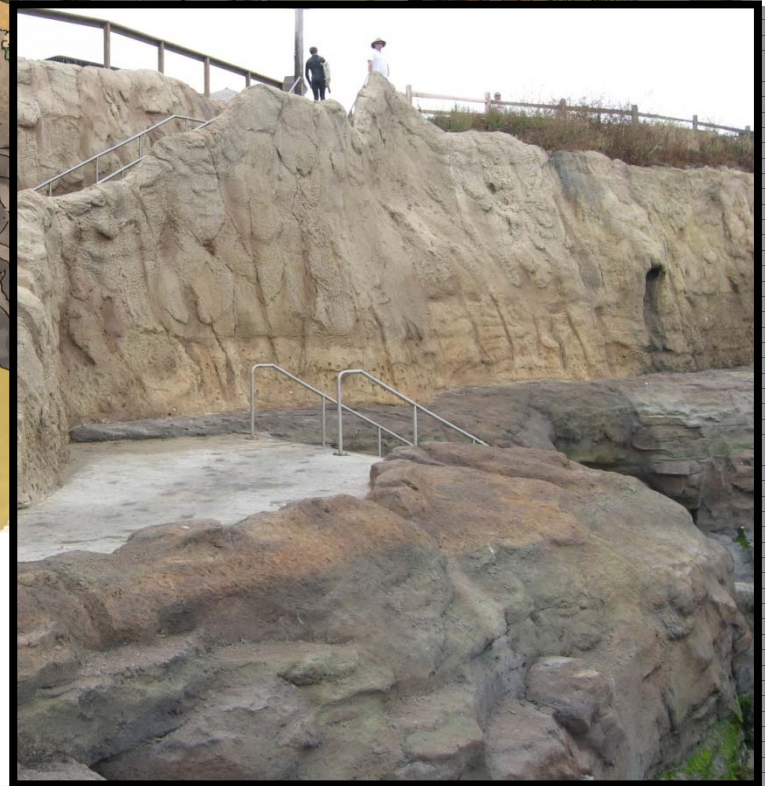
Winter Scour Photos Taken February 1998



Shoreline Protection and Water Quality Improvement



View Looking West Down E. Cliff Dr. – Low Winter Sand Condition



Visual Simulation – Looking East From O’Neil Building



Existing



Visual Simulation – Looking East From O’Neil Building



Proposed



Visual Simulation – Looking Northeast From Beach



Existing



Visual Simulation – Looking Northeast From Beach



Proposed



Visual Simulation – Looking West From E. Cliff Dr.



Existing



Visual Simulation – Looking West From E. Cliff Dr.



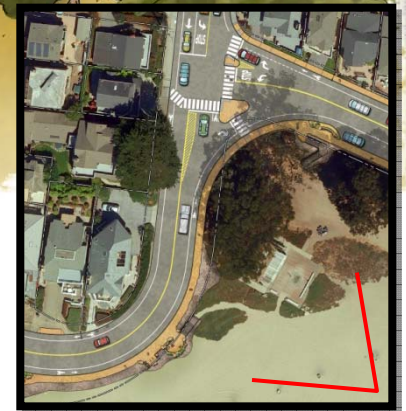
Proposed



Assembly Ave. to 7th Ave.



View of E. Cliff Dr. at 7th Ave.



Visual Simulation – Looking West From Beach



Existing



Visual Simulation – Looking West From Beach



Proposed



Visual Simulation – Looking Southeast From 7th Ave.



Existing



Visual Simulation – Looking Southeast From 7th Ave.

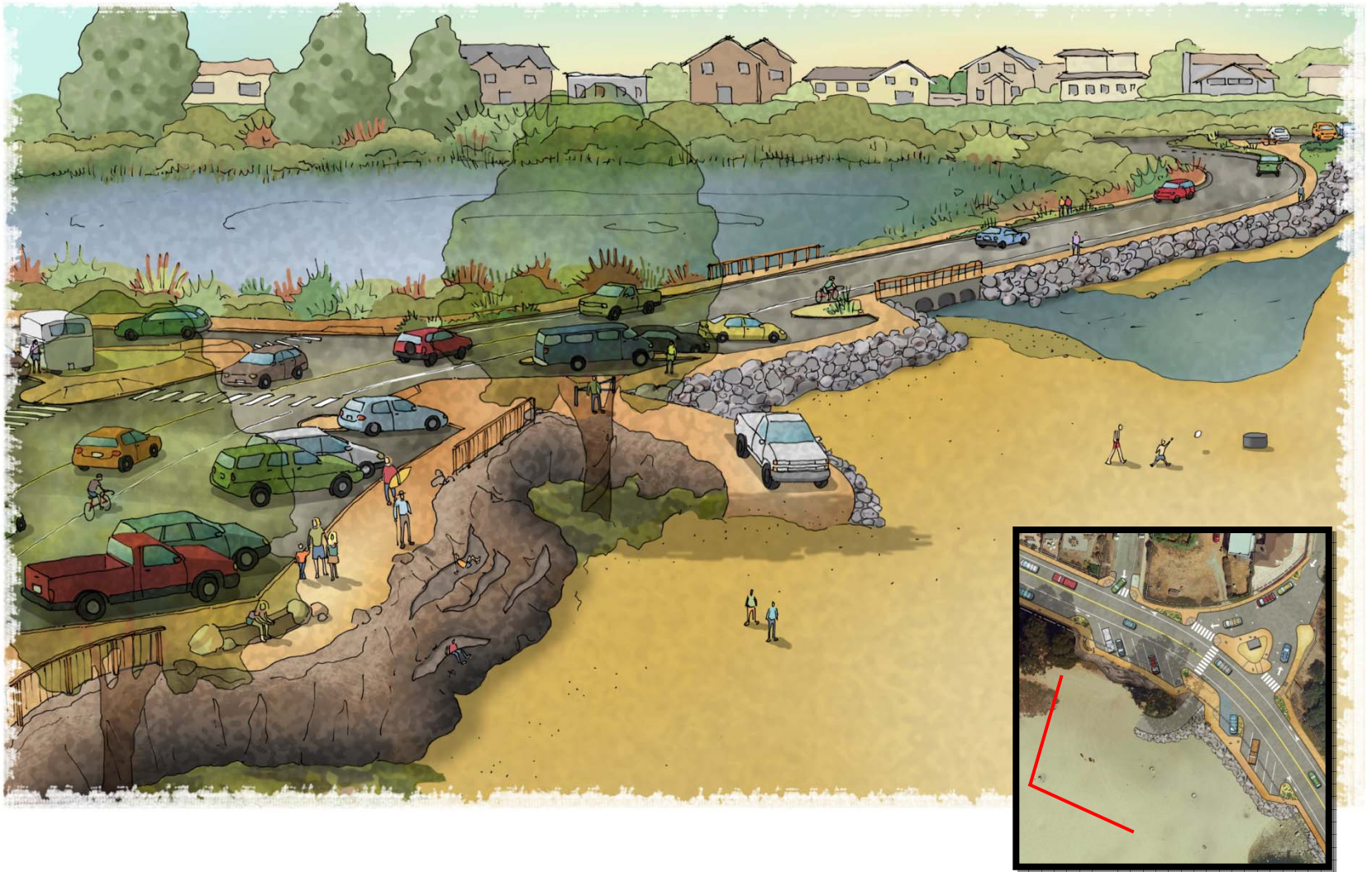


Proposed

7th Ave. to 9th Ave.



View of E. Cliff Dr. Towards Schwan Lake



Visual Simulation – Looking North From Beach



Existing



Visual Simulation – Looking North From Beach



Proposed





1957 Aerial View

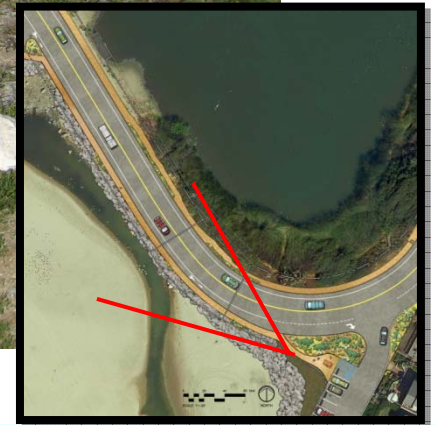
9th Ave. to 11th Overlook



Visual Simulation – Looking West From 11th Overlook



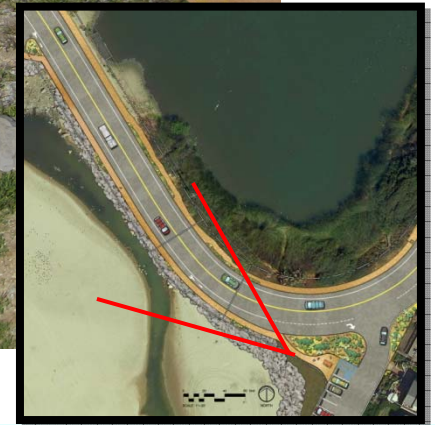
Existing



Visual Simulation – Looking West From 11th Overlook



Proposed



Visual Simulation – Looking Southwest From 11th Overlook



Existing



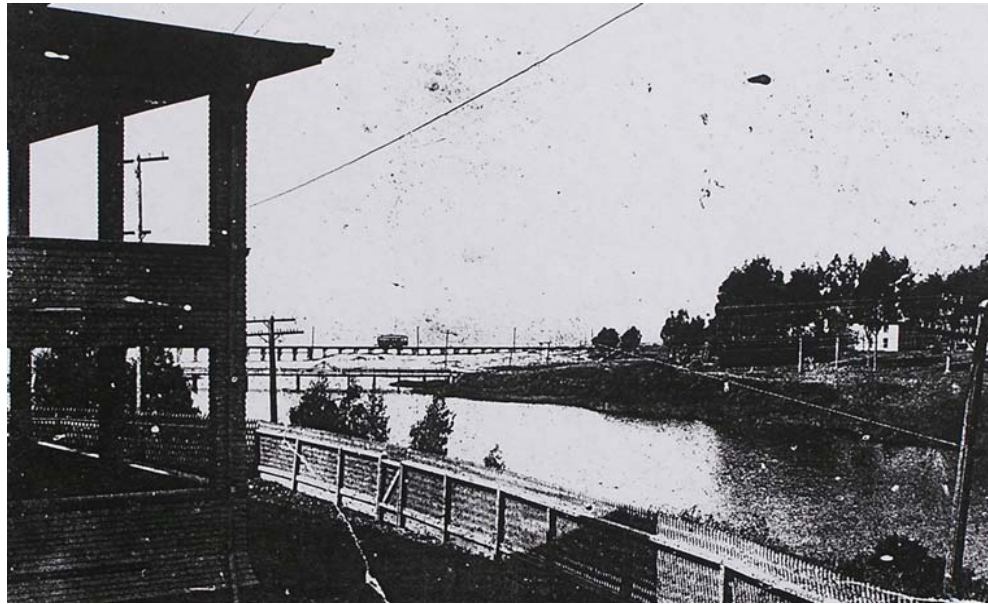
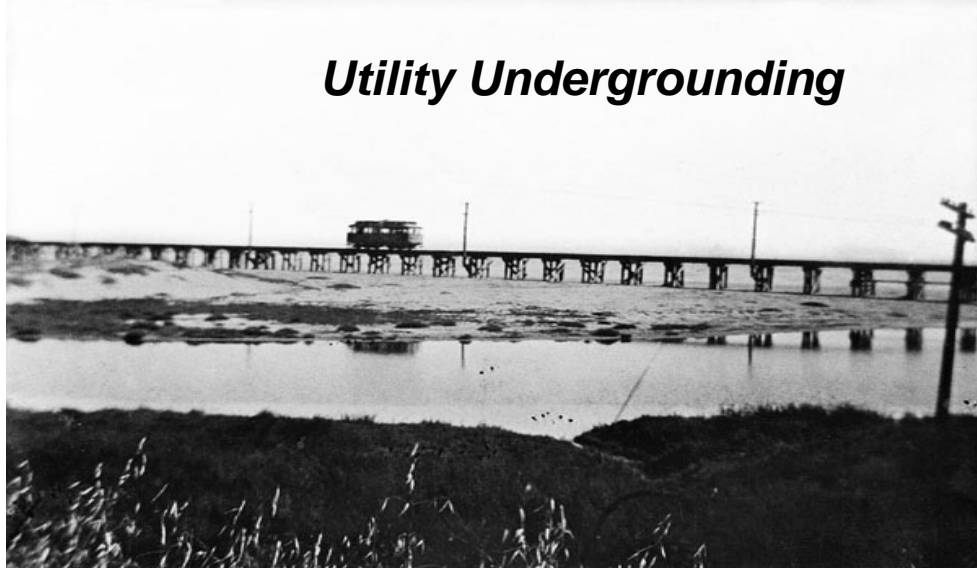
Visual Simulation – Looking Southwest From 11th Overlook



Proposed



Utility Undergrounding



Twin Lakes Projects

**Santa Cruz County
Redevelopment Agency**

Thank You!

October 28, 2010



Build a Stronger Soquel and Live Oak